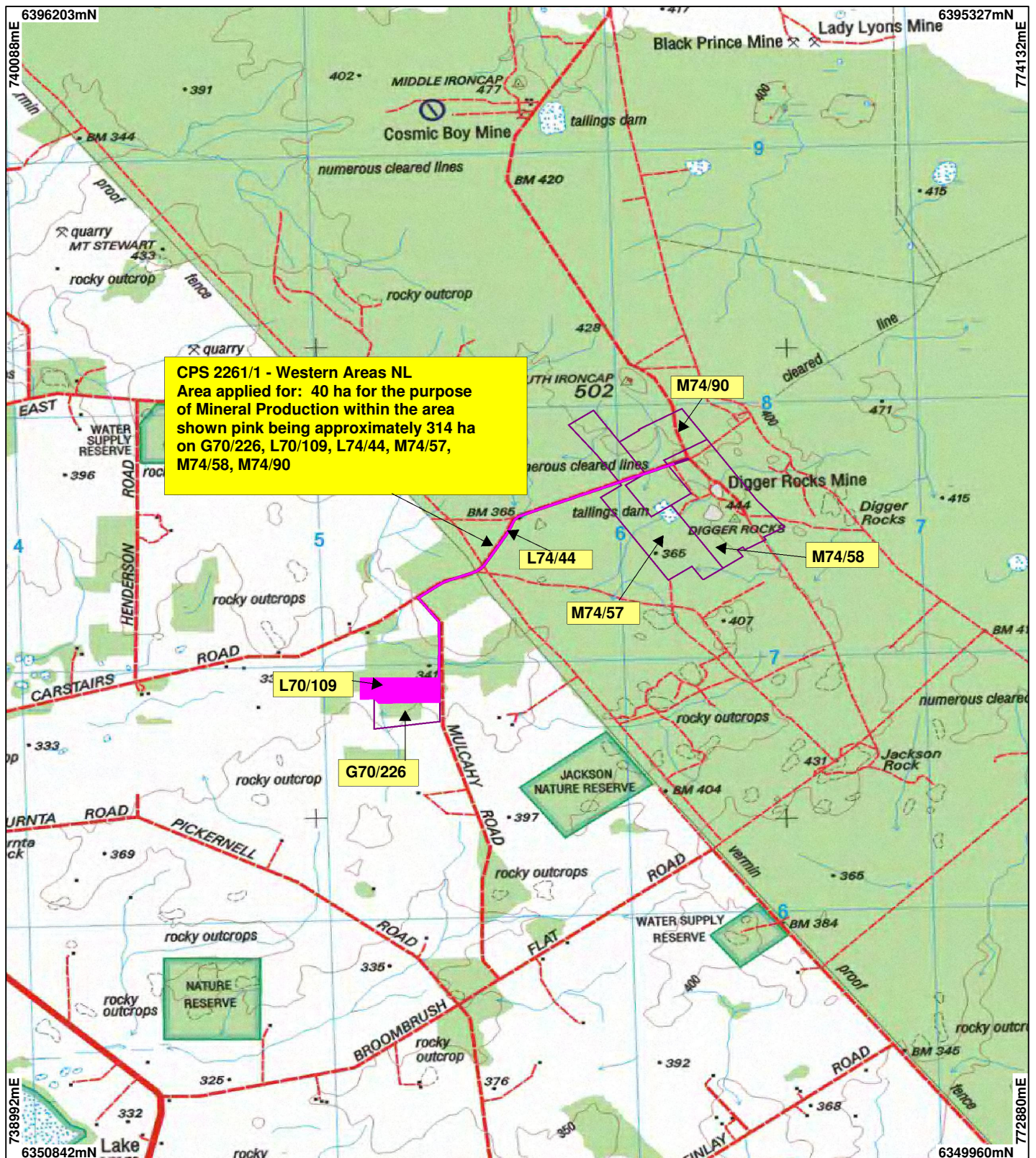


CPS 2261/1 - Western Areas NL



LEGEND

Mining Tenements

Land parcels related to instrument

Environmental Impact Assessments

- currently being assessed
- s16 - Advice from Minister
- s38 - Formal
- s38 - Formal - Assessment on Referral Information (ARI)
- s38 - Formal - Assessment on Referral Information (ARI) Intent
- s38 - Formal - Environmental Protection Statement (EPS)
- s38 - Formal - Environmental Protection Statement (EPS) Intent
- s38 - Formal - Environmental Review & Management Programme
- s38 - Formal - Public Environmental Review (cont)

- s38 - Formal - Public Environmental Review (PER)
- s38 - Formal - Strategic Environmental Assessment (SEA)
- s38 - Not Assessed - Managed Under Part 5
- s38 - Not Assessed - No Advice Given
- s38 - Not Assessed - Public Advice Given
- s38 - Not Assessed - Public Advice Given - Part 5
- s38 - Proposal Unlikely to be Environmentally Acceptable
- s38 - Withdrawn
- s46 - Change to Environmental Conditions
- s46 - Formal
- s48 - Deemed Assessed (exceeded 28 days)
- s48 - Incapable of Being Made Environmentally Acceptable
- s48 - Scheme Assessed - Environmental Review (Ass No. 1567)
- s48 - Scheme Assessed - Environmental Review Required (cont)

- s48 - Scheme Not Assessed - Advice Given (no appeals)
- s48 - Scheme Not Assessed (no appeals)
- Clearing Instruments
- NATMAP 250K Series Mapping - GA 08/03



0 5 km

Scale 1:200000

(Approximate when reproduced at A4)

Geocentric Datum Australia 1994

Note: the data in this map have not been projected. This may result in geometric distortion or measurement inaccuracies.

..... Date

Officer with delegated authority under Section 20 of the Environmental Protection Act 1986

Information derived from this map should be confirmed with the data custodian acknowledged by the agency acronym in the legend.



WA Crown Copyright 2002