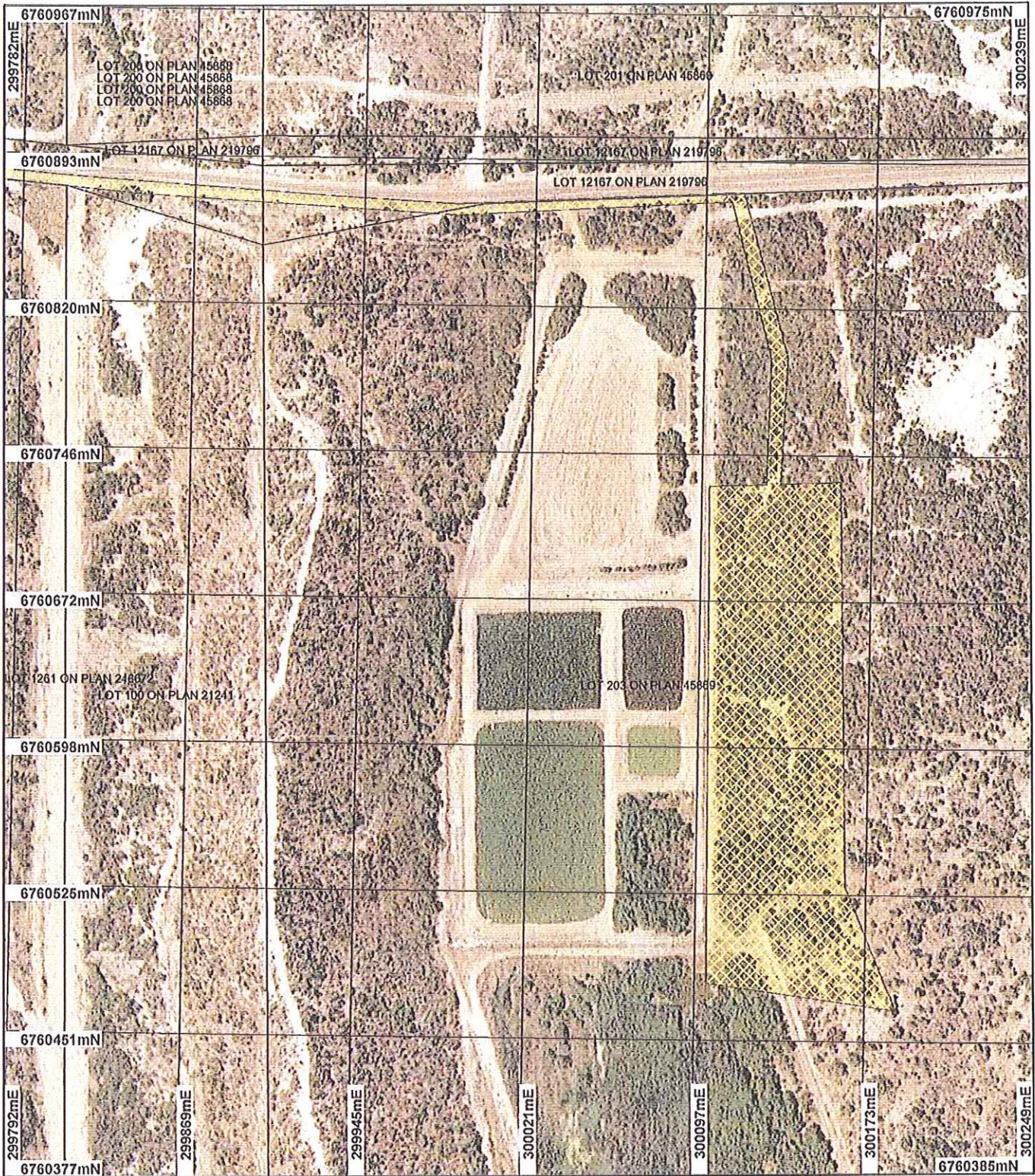


Plan 2281/1a



LEGEND

Clearing Instruments

- Areas Approved to Clear
- Road Centrelines
- Cadastro
- Dongara 50cm Orthomosaic
- Landgate00



Scale 1:2750

(Approximate when reproduced at A4)

Geocentric Datum Australia 1994

Note: the data in this map have not been projected. This may result in geometric distortion or measurement inaccuracies.

S. McEvoy Date 17/4/08
 S. McEvoy
 Officer with delegated authority under Section 20 of the Environmental Protection Act 1986

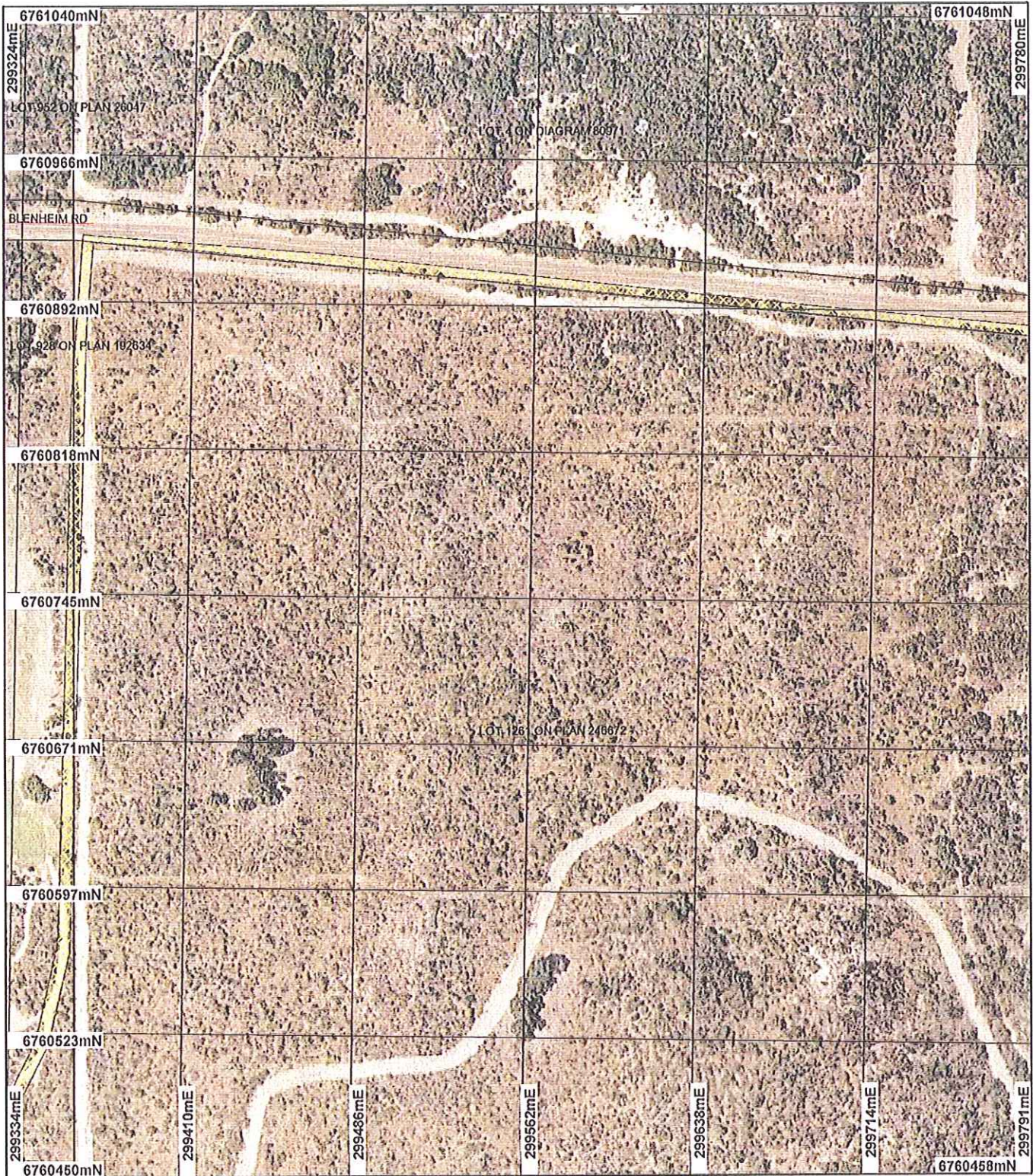
Information derived from this map should be confirmed with the data custodian acknowledged by the agency acronym in the legend.



Department of Environment and Conservation

WA Crown Copyright 2002

Plan 2281/1b



LEGEND

Clearing Instruments

- Areas Approved to Clear
- Road Centrellines
- Cadastro
Dongara 50cm Orthomosaic
Landgate06



Scale 1:2750

(Approximate when reproduced at A4)

Geocentric Datum Australia 1994

Note: the data in this map have not been projected. This may result in geometric distortion or measurement inaccuracies.

J. McEvoy Date *17/4/08*
 J. McEvoy
 Officer with delegated authority under Section 20 of the Environmental Protection Act 1986

Information derived from this map should be confirmed with the data custodian acknowledged by the agency acronym in the legend.



Department of Environment and Conservation

WA Crown Copyright 2002

Plan 2281/1c



LEGEND

- Clearing Instruments**
- Areas Approved to Clear
 -  Road Centrelines
 - Cadastro
 - Dongara 50cm Orthomosaic
 - Landgate06



Scale 1:2750

(Approximate when reproduced at A4)

Geocentric Datum Australia 1994

Note: the data in this map have not been projected. This may result in geometric distortion or measurement inaccuracies.

S. McEvoy Date *17/9/06*
 S. McEvoy
 Officer with delegated authority under Section 20 of the Environmental Protection Act 1986

Information derived from this map should be confirmed with the data custodian acknowledged by the agency acronym in the legend.



Department of Environment and Conservation

WA Crown Copyright 2002