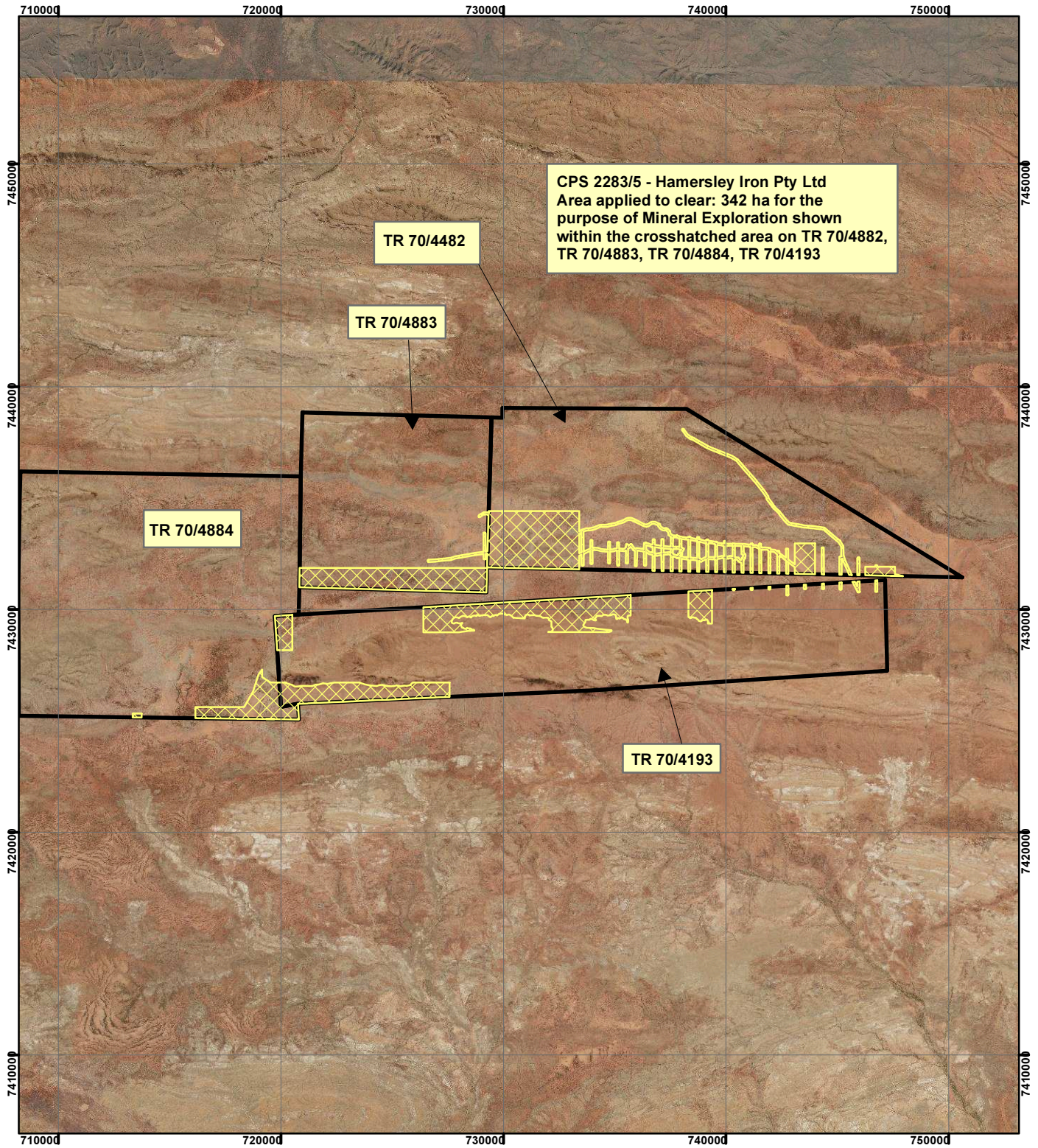


# CPS 2283/5 - Hamersley Iron Pty Ltd



CPS 2283/5 - Hamersley Iron Pty Ltd  
 Area applied to clear: 342 ha for the  
 purpose of Mineral Exploration shown  
 within the crosshatched area on TR 70/4882,  
 TR 70/4883, TR 70/4884, TR 70/4193

TR 70/4882

TR 70/4883

TR 70/4884

TR 70/4193

**Legend**

Clearing Instruments

**TENID**

TR 7004193

TR 7004882

TR 7004883

TR 7004884

Virtual Mosaic

Scale 1:250,000

Geocentric Datum Australia 1994

*Note: the data in this map have not been projected. This may result in geometric distortion or measurement inaccuracies.*

..... Date .....

Officer with delegated authority under Section 20 of the Environmental Protection Act 1986

Information derived from this map should be confirmed with the data custodian acknowledged by the agency acronym in the legend.