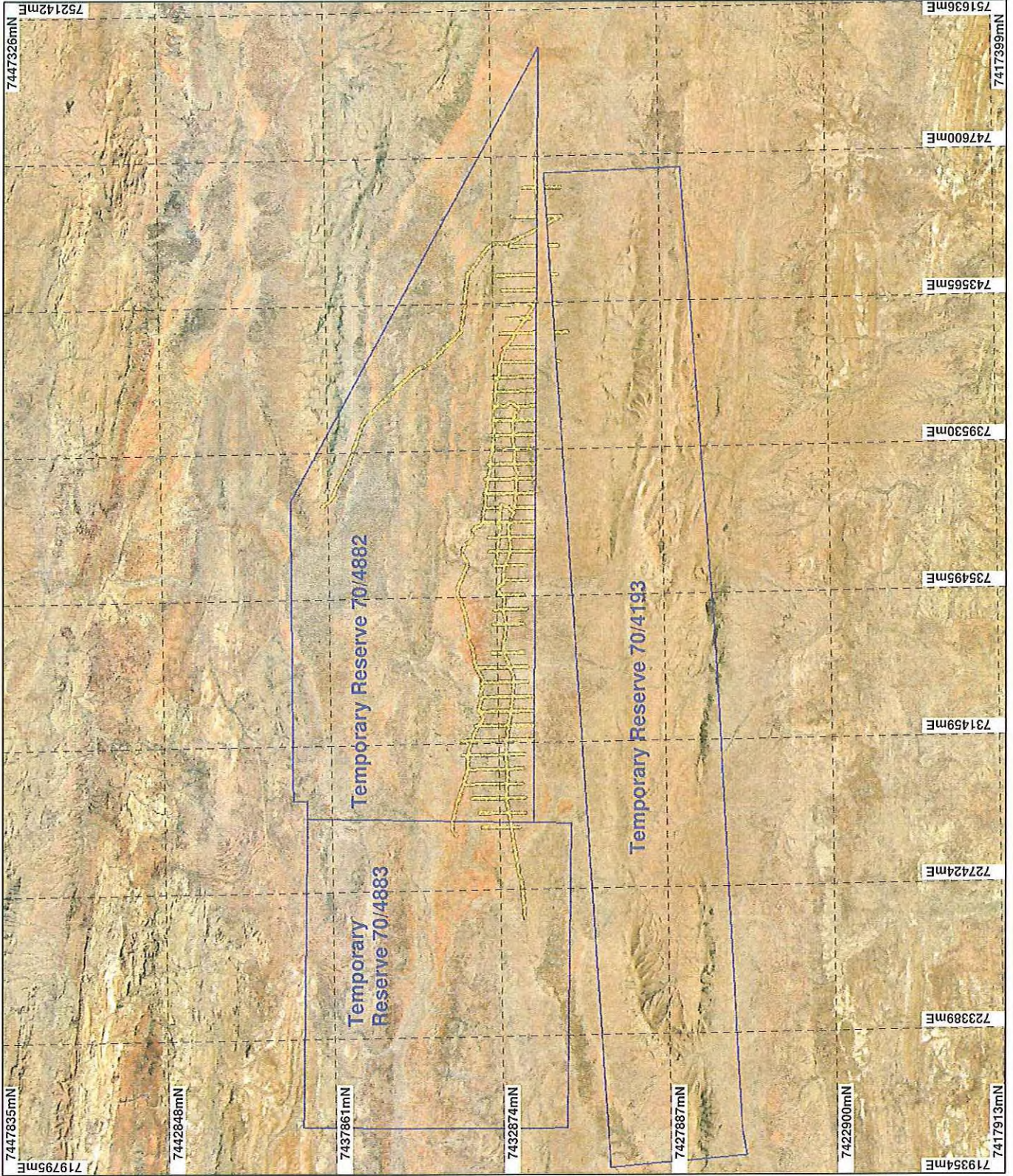


PLAN 2283/2



LEGEND

- Mining Tenements
- Clearing Instruments
- Areas Subject to Conditions
- Areas Approved to Clear
- Ophthalmia 50cm Orthomosaic - Landgate 2004

* Project Data. This data has not been quality assured. Please contact map author for details.



0 3.75 km

Scale 1:150000

(Approximate when reproduced at Letter)

Geocentric Datum Australia 1994

Notes: The data in this map have not been proposed. They may result in geometric distortion of measurement characteristics.

TIM GRIFFIN Date 12/19/11

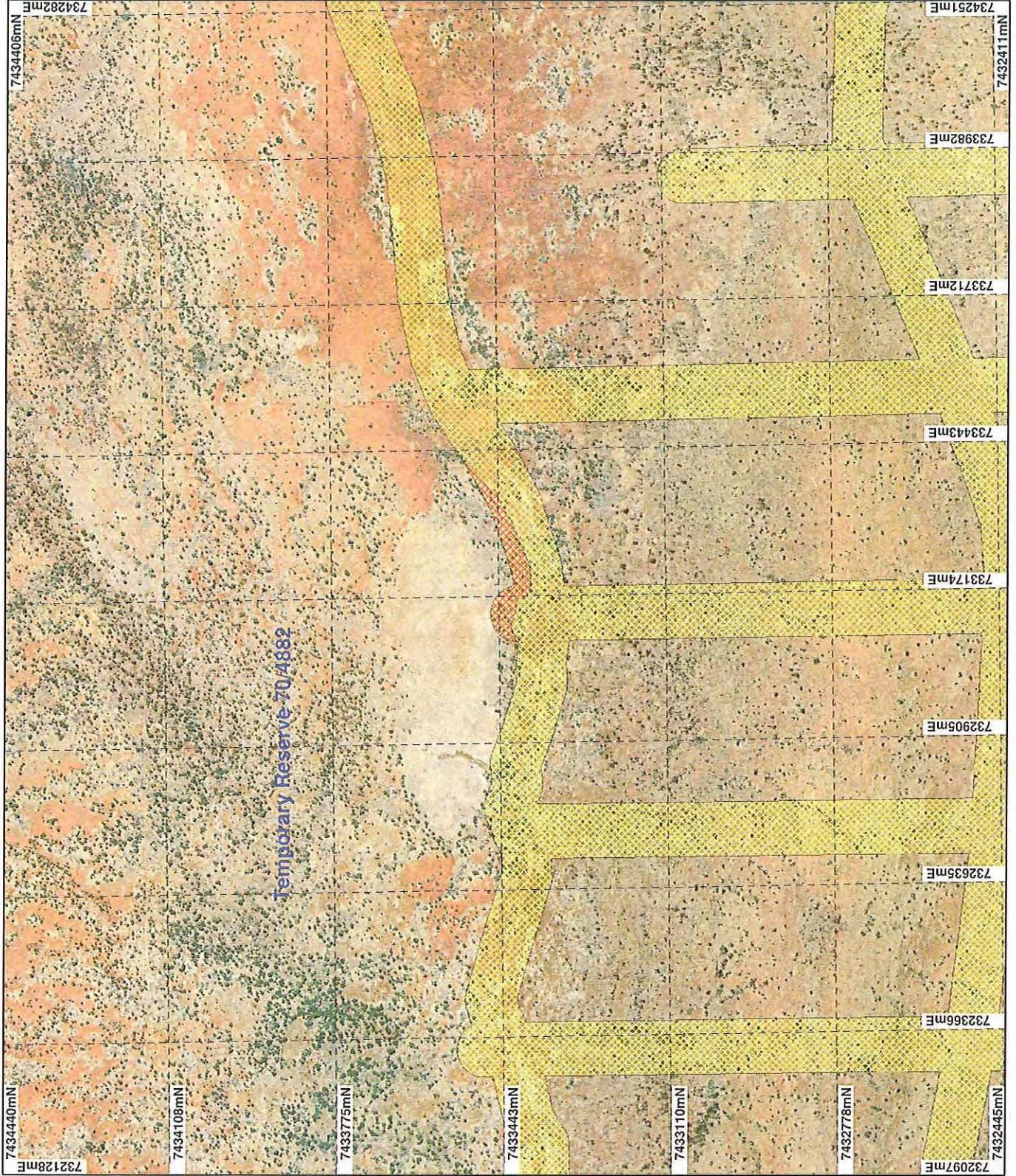
Officer with delegated authority under Section 20 of the Environmental Protection Act 1986

Information derived from this map should be confirmed with the data custodian acknowledged by the agency acronym in the legend.



WA Govt Copyright 2002

PLAN 2283/2A



LEGEND

- Mining Tenements
- Clearing Instruments
- Areas Subject to Conditions
- Areas Approved to Clear
- Ophthalmia 50cm Orthomosaic - Landgate 2004

* Project Data. This data has not been quality assured. Please contact map author for details.



0 300 m

Scale 1:10000
(Approximate when reproduced in Letter)

Geocentric Datum Australia 1994

Note: the data in this map have not been projected. This may result in geometric elongation or measurement inaccuracies.

Tim Griffin
Date 12/3/11

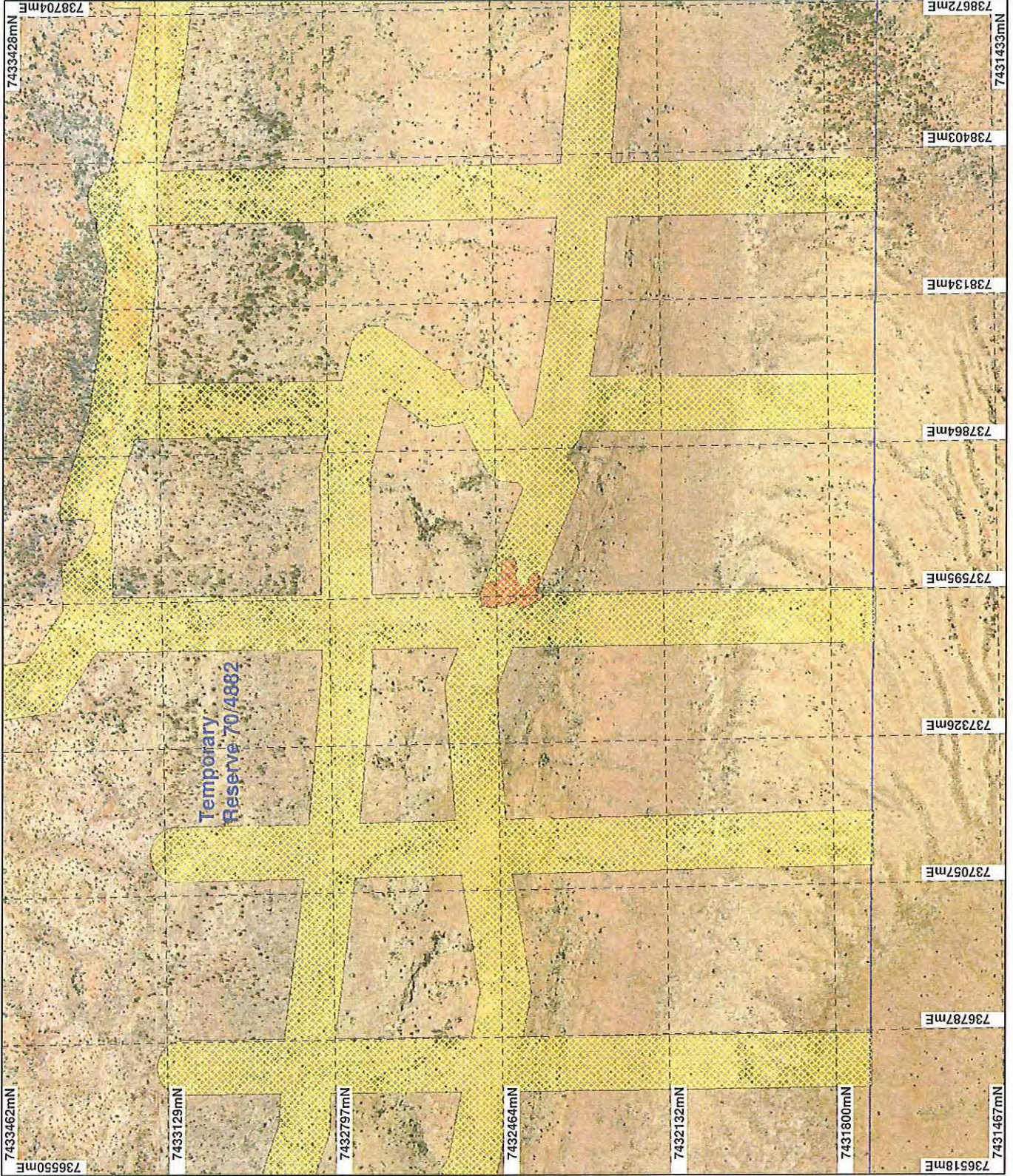
TIM GRIFFIN

Officer with delegated authority under Section 20 of the Environmental Protection Act 1986
Information derived from this map should be confirmed with the data custodian acknowledged by the agency acronym in the legend.



WA Government Copyright 2002

PLAN 2283/2B



LEGEND

- Mining Tenements
- Clearing Instruments
- Areas Subject to Conditions
- Areas Approved to Clear
- Ophthalmia 50cm Orthomosaic - Landgate 2004

* Project Data. This data has not been quality assured. Please contact map author for details.



0 300 m

Scale 1:10000

(Approximate when reproduced at Letter)

Geocentric Datum Australia 1994

Note: the data in this map have not been project checked and may result in geometric distortion or measurement inaccuracies.

TIM GRIFFIN Date 12/11/11

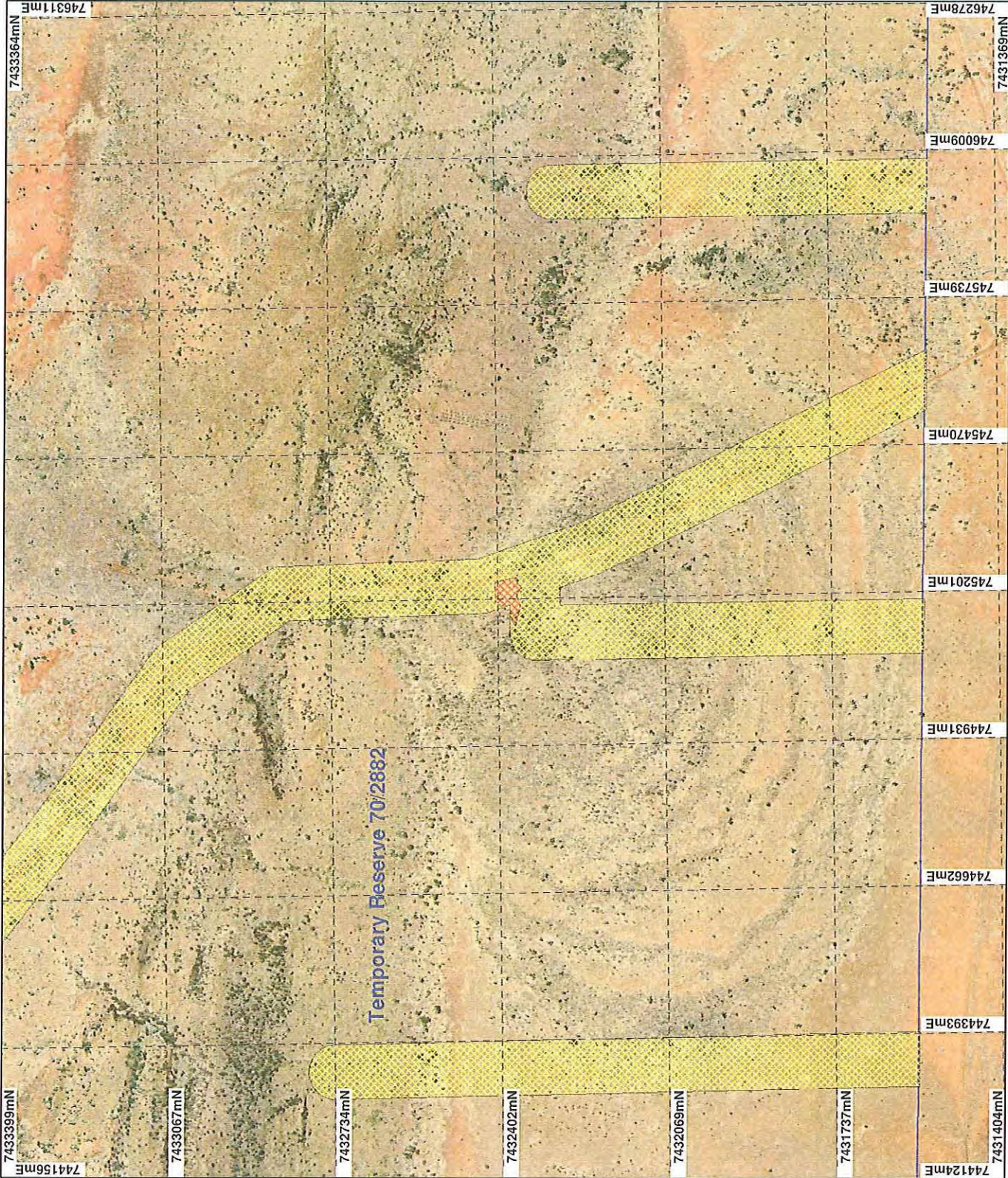
Officer with delegated authority under Section 20 of the Environmental Protection Act 1986

Information derived from this map should be confirmed with the data custodian acknowledged by the agency acronym in the legend.



WA Govt Copyright 2002

PLAN 2283/2C



LEGEND

- Mining Tenements
- Clearing Instruments
- Areas Subject to Conditions
- Areas Approved to Clear
- Ophthalmia 50cm Orthomosaic - Landgate 2004

* Project Data. This data has not been quality assured. Please contact map author for details.



0 300 m

Scale 1:10000
(Approximate when reproduced as Letter)

Geocentric Datum Australia 1984

Note: the data in this map have not been projected. This may result in geometric distortion or measurement inaccuracies.

Tina Griffin
Date 12/5/14

TINA GRIFFIN

Officer with delegated authority under Section 20 of the Environmental Protection Act 1986
Information derived from this map should be confirmed with the data custodian acknowledged by the agency acronym in the legend.



WA Crown Copyright 2002