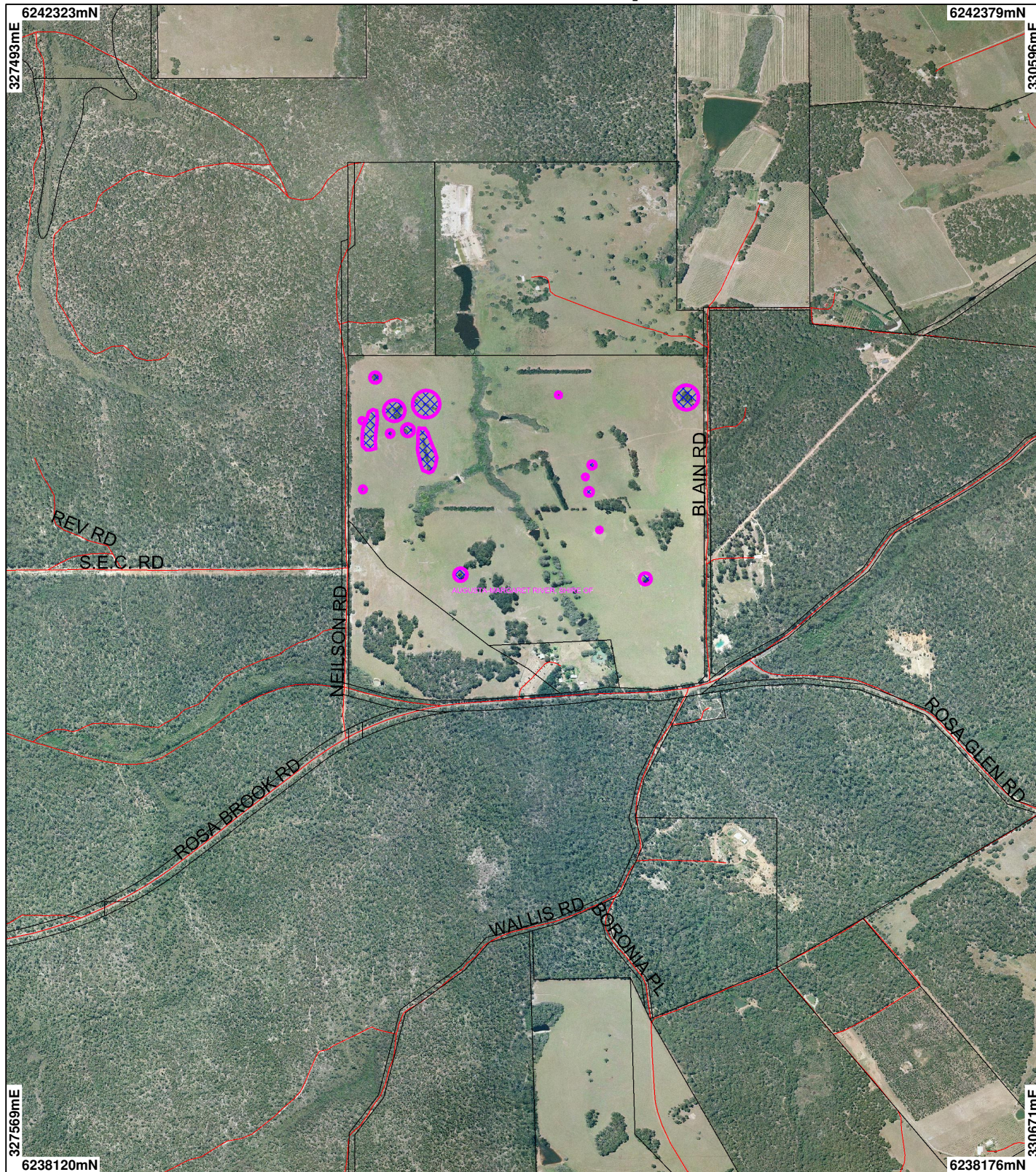


# CPS 2342 - Map



## LEGEND

- |                             |                                   |
|-----------------------------|-----------------------------------|
| <b>Clearing instruments</b> | <input type="checkbox"/> Cadastre |
| Areas Applied to Clear      | Towns                             |
| Areas Subject to Conditions | Local Government Authorities      |
| Areas Approved to Clear     |                                   |
| Road Centrelines            |                                   |

Busselton 50cm Orthomosaic - DL104



Scale 1:18439  
(Approximate when reproduced at A4)

Geocentric Datum Australia 1994

Note: the data in this map have not been projected. This may result in geometric distortion or measurement inaccuracies.

..... Date .....

Officer with delegated authority under Section 20 of the Environmental Protection Act 1986

Information derived from this map should be confirmed with the data custodian acknowledged by the agency acronym in the legend.



\* Project Data. This data has not been quality assured. Please contact map author for details.