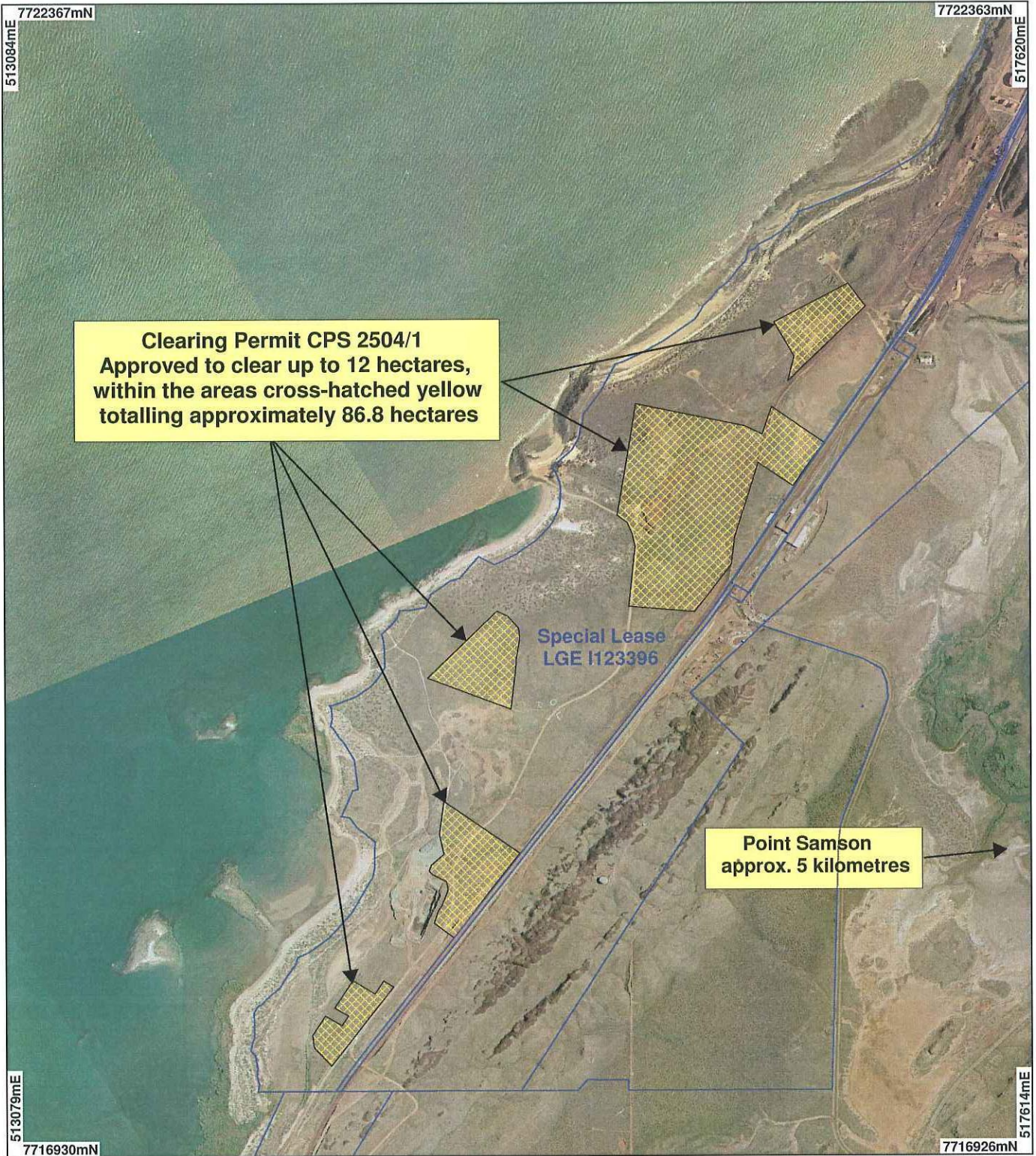


PLAN 2504/1



Clearing Permit CPS 2504/1
 Approved to clear up to 12 hectares,
 within the areas cross-hatched yellow
 totalling approximately 86.8 hectares

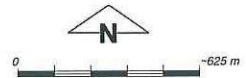
Special Lease
 LGE I123396

Point Samson
 approx. 5 kilometres

LEGEND

Dampier Archipelago 80cm
 Orthomosaic - SLI01
 Clearing Instruments

- Areas Approved to Clear
- Land parcels related to Instrument_1



Scale 1:25000
 (Approximate when reproduced at A4)

Geocentric Datum Australia 1994

Note: the data in this map have not been projected. This may result in geometric distortion or measurement inaccuracies.

Kim Anderson Date 20 July 2008

Kim Anderson
 Officer with delegated authority under Section 20 of
 the Environmental Protection Act 1986

Information derived from this map should be confirmed with the data custodian acknowledged by the agency acronym in the legend.



WA Crown Copyright 2002