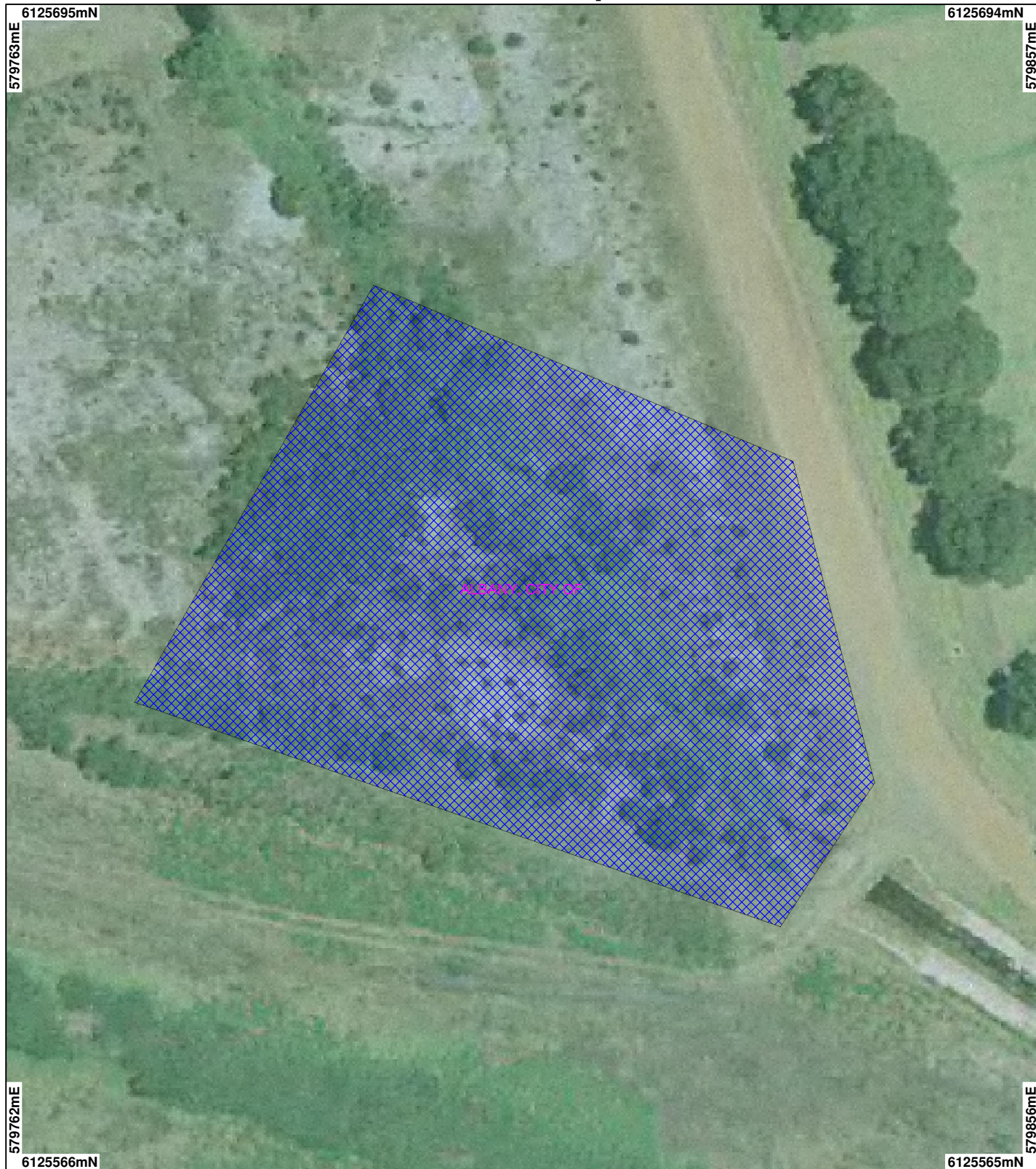
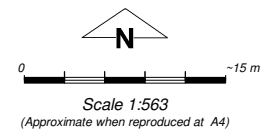


CPS 2523 Map 3b



LEGEND

- | | | |
|------------------------------------|--|---|
| Augusta 1.4m Orthomosaic - DLI00 | Pemberton 1.4m Orthomosaic - DOLA 99 | Areas Approved to Clear |
| ✓ Road Centrelines | Hill River Arrowsmith 1.4m Orthomosaic - DLI00/01/02 | Gingin 50cm Orthomosaic - Landgate06 |
| □ Local Government Authorities | Clearing Instruments | Albany Townsite 20cm Orthomosaic - Landgate01 |
| Busselton 50cm Orthomosaic - DLI04 | Areas Applied to Clear | |
| | Areas Subject to Conditions (cont) | |



Geocentric Datum Australia 1994
 Note: the data in this map have not been projected. This may result in geometric distortion or measurement inaccuracies.

..... Date

Information derived from this map should be confirmed with the data custodian acknowledged by the agency acronym in the legend.



* Project Data. This data has not been quality assured. Please contact map author for details.