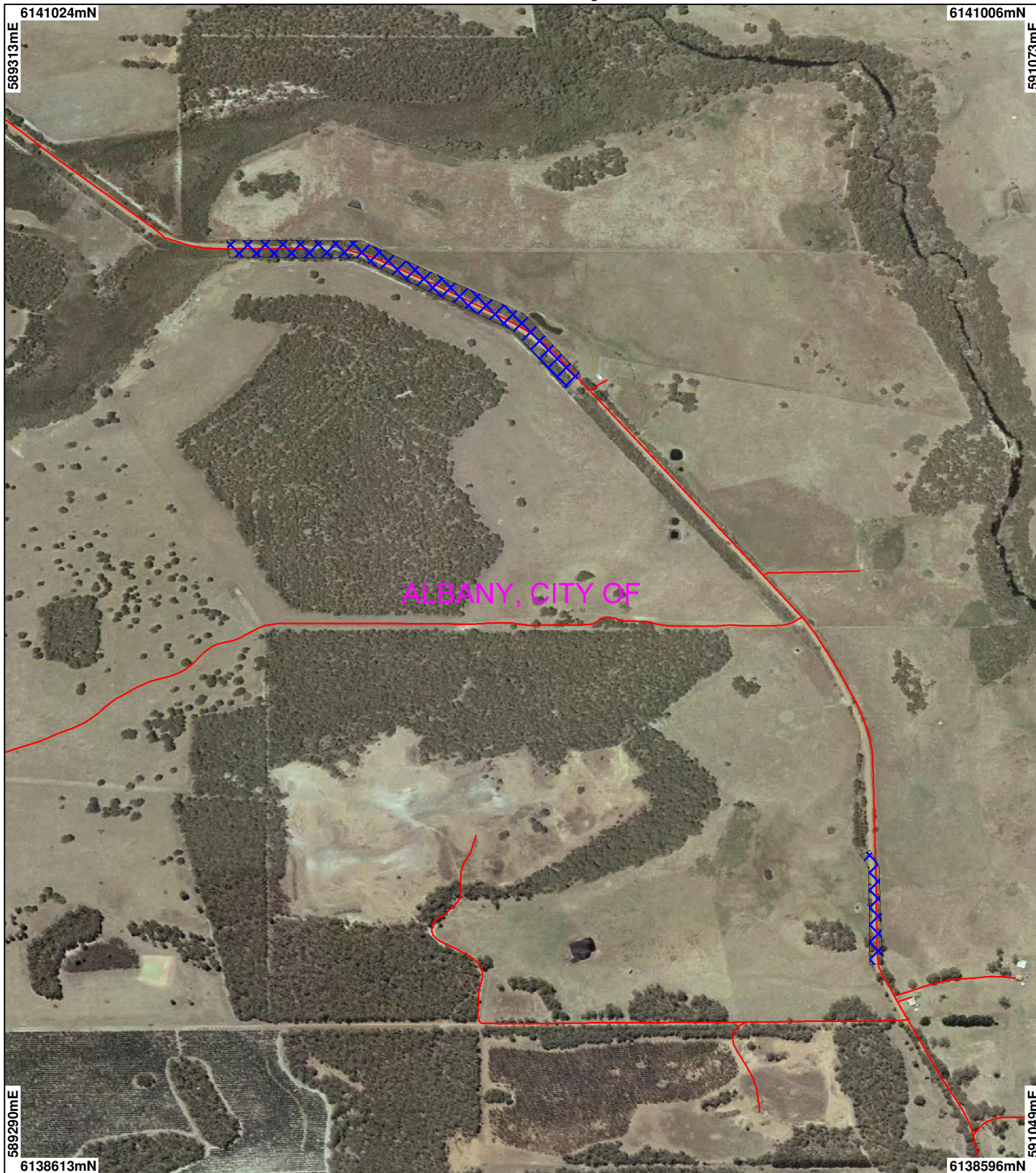
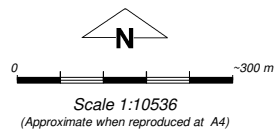


CPS 2523 Map 4 b



LEGEND

- | | | |
|--|---|---|
| Augusta 1.4m Orthomosaic - DLI00 | Western Australia ETM+ 25m 543 - AGO 2000 | Areas Approved to Clear |
| ✓ Road Centrelines | Pemberton 1.4m Orthomosaic - DOLA 99 | Gingin 50cm Orthomosaic - Landgate06 |
| □ Local Government Authorities | Clearing Instruments | Manypeaks 1.4m Orthomosaic - DLI Jan 04 |
| Western Australia ETM 25m 543 - AGO 2004 | Areas Applied to Clear | |
| | Areas Subject to Conditions (cont) | |



Geocentric Datum Australia 1994
 Note: the data in this map have not been projected. This may result in geometric distortion or measurement inaccuracies.

..... Date

Information derived from this map should be confirmed with the data custodian acknowledged by the agency acronym in the legend.



* Project Data. This data has not been quality assured. Please contact map author for details.