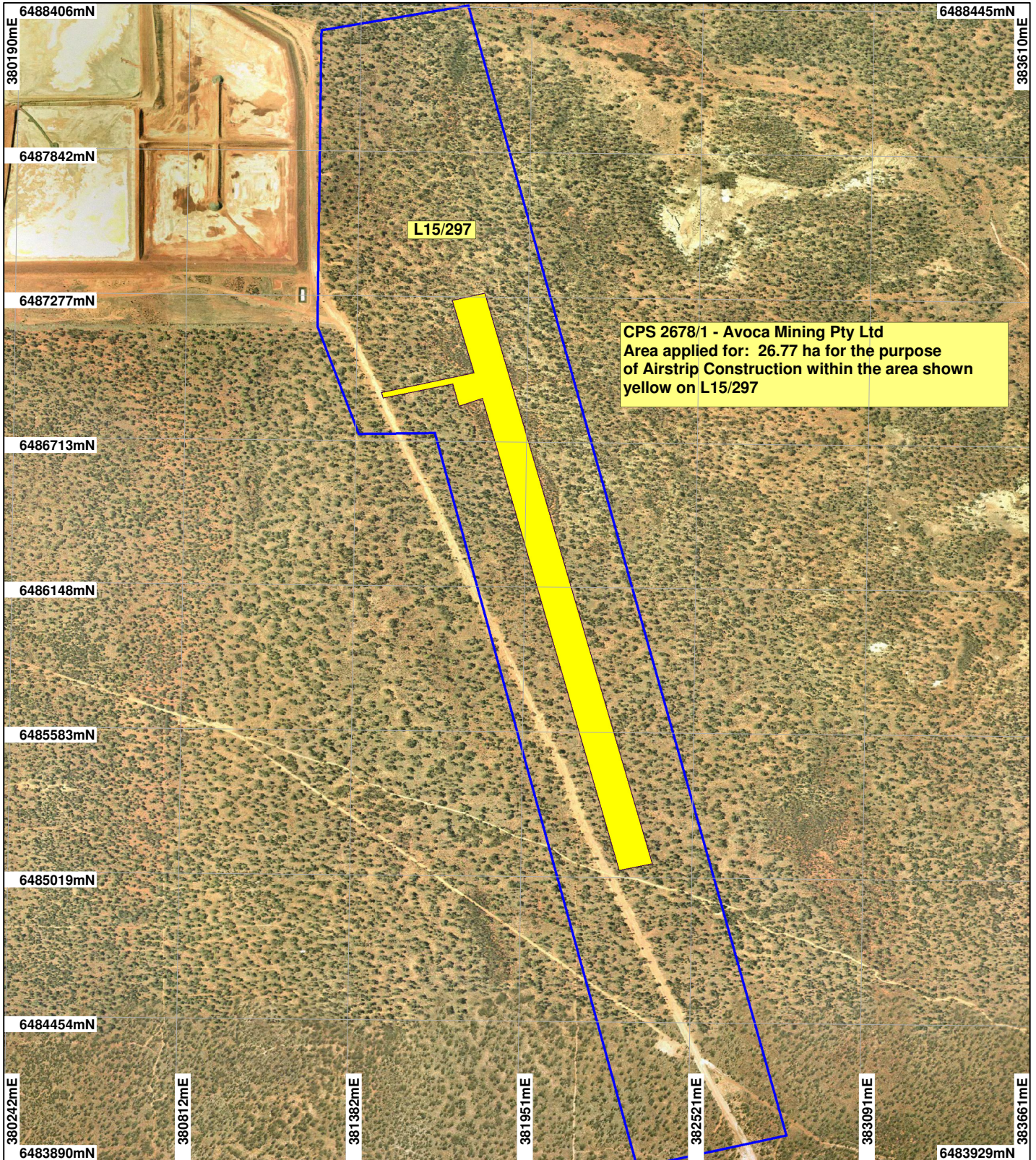


# CPS 2678/1 - Avoca Mining Pty Ltd



CPS 2678/1 - Avoca Mining Pty Ltd  
 Area applied for: 26.77 ha for the purpose  
 of Airstrip Construction within the area shown  
 yellow on L15/297

## LEGEND

- Land parcels related to instrument
- Clearing Instruments  
 Widgiemooltha 1.4m  
 Orthomosaic - Landgate  
 2002



Scale 1:20000  
 (Approximate when reproduced at A4)

Geocentric Datum Australia 1994

Note: the data in this map have not been projected. This may result in geometric distortion or measurement inaccuracies.

..... Date .....

Officer with delegated authority under Section 20 of the Environmental Protection Act 1986

Information derived from this map should be confirmed with the data custodian acknowledged by the agency acronym in the legend.



WA Crown Copyright 2002