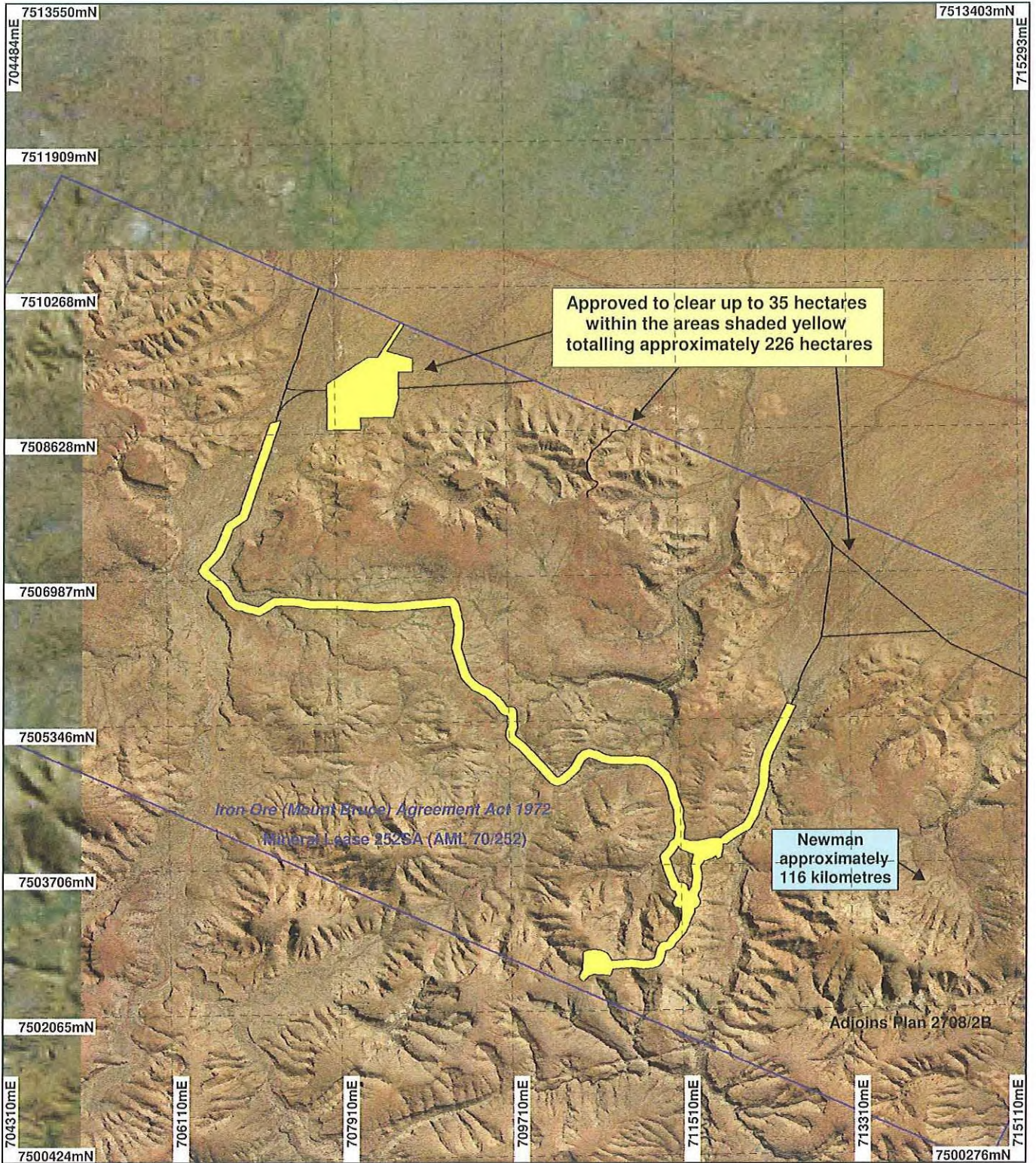
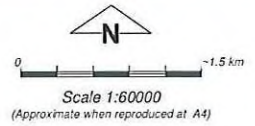


PLAN 2708/2A



LEGEND

- | | |
|---|--|
| Clearing Instruments | Weeli Woolli 50cm Orthomosaic - Landgate 2004 |
| ■ Areas Approved to Clear | |
| ■ Mining Tenements | |
| ■ Western Australia Landsat Mosaic 25m - AGO 2006 | |



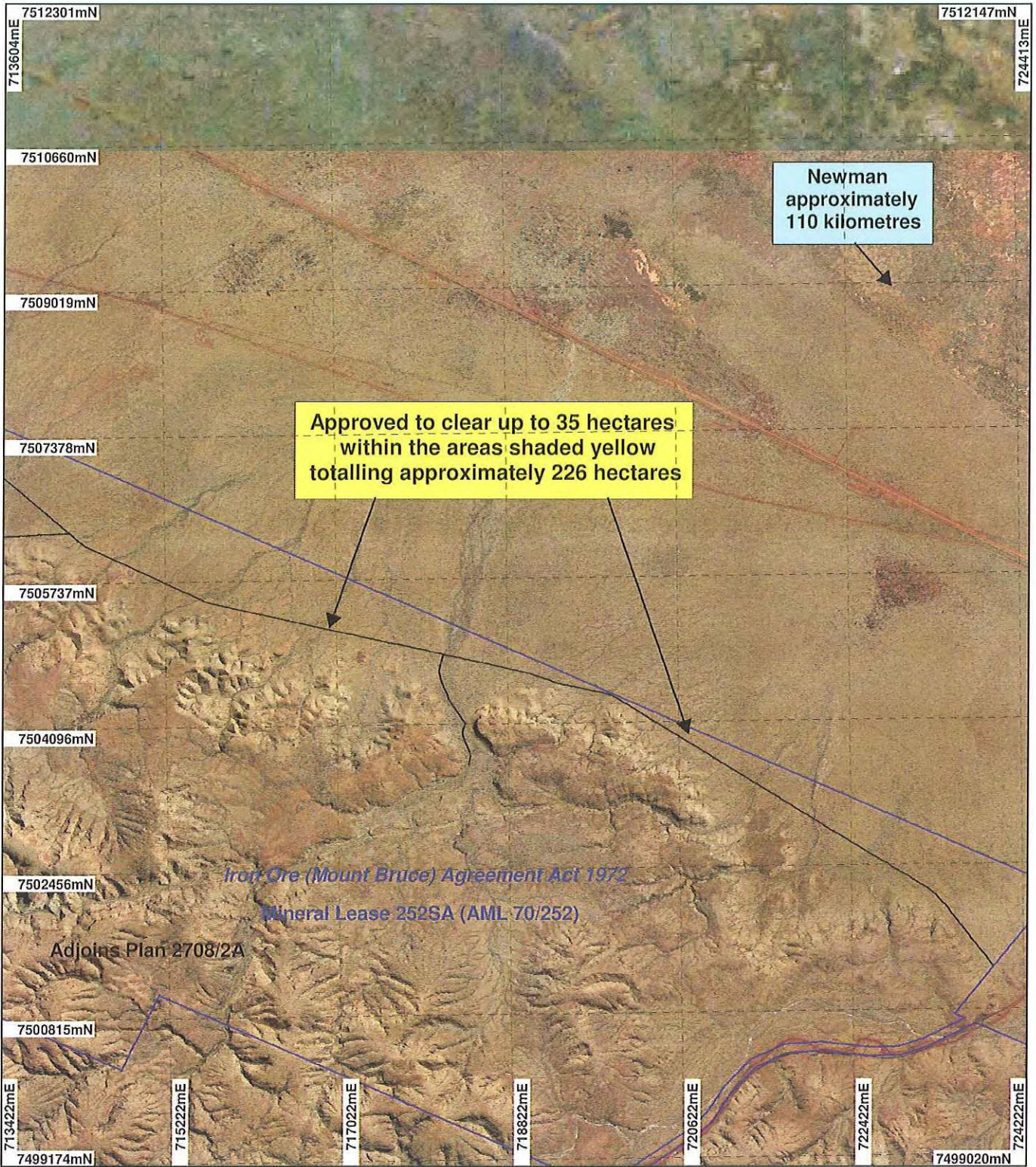
Geocentric Datum Australia 1994
 Note: the data in this map have not been projected. This may result in geometric distortion or measurement inaccuracies.

[Signature] Date 19/11/19
 Phil Gorey

Officer with delegated authority under Section 20 of the Environmental Protection Act 1986
 Information derived from this map should be confirmed with the data custodian acknowledged by the agency acronym in the legend.

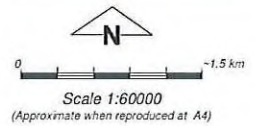


PLAN 2708/2B



LEGEND

- | | |
|---|---|
| <p>Clearing Instruments</p> <ul style="list-style-type: none"> Areas Approved to Clear Mining Tenements <p>Western Australia Landsat Mosaic 25m - AGO 2006</p> | <p>Weell Woolj 50cm Orthomosaic - Landgate 2004</p> |
|---|---|



Geocentric Datum Australia 1994
 Note: the data in this map have not been projected. This may result in geometric distortion or measurement inaccuracies.

Phil Gorey Date 19/11/09
 Phil Gorey

Officer with delegated authority under Section 20 of the Environmental Protection Act 1986
 Information derived from this map should be confirmed with the data custodian acknowledged by the agency acronym in the legend.

