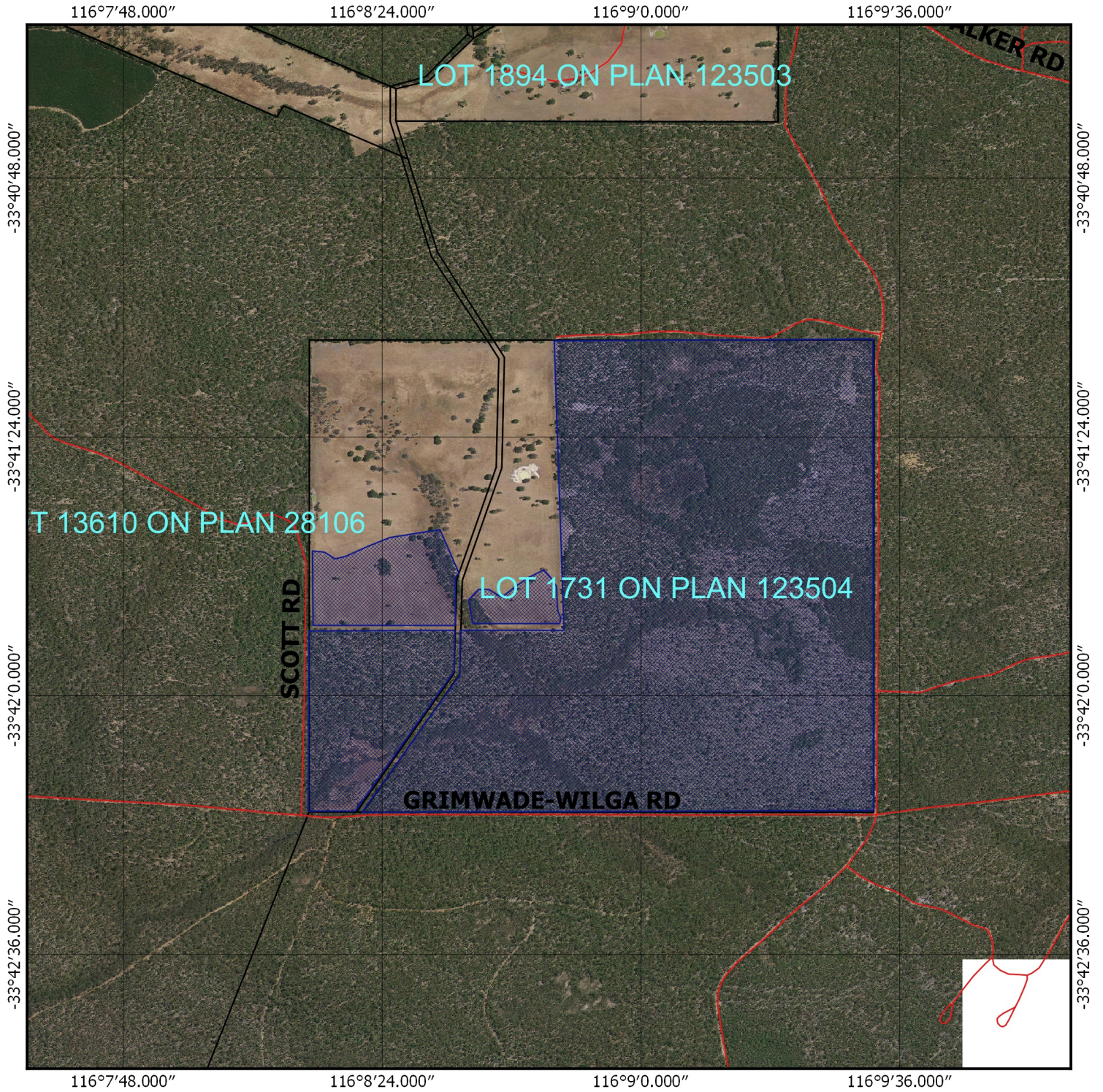


# CPS 2802/2 - Map



## Legend

-  Clearing Instruments Proposal
-  Roads
-  LGA
-  Cadastre
-  Virtual Mosaic

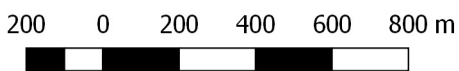


1:14,811

MGA 94  
Geocentric Datum of Australia 1994

.....Date.....

Officer with delegated authority under Section 20  
of the Environmental Protection Act 1986



GOVERNMENT OF  
WESTERN AUSTRALIA