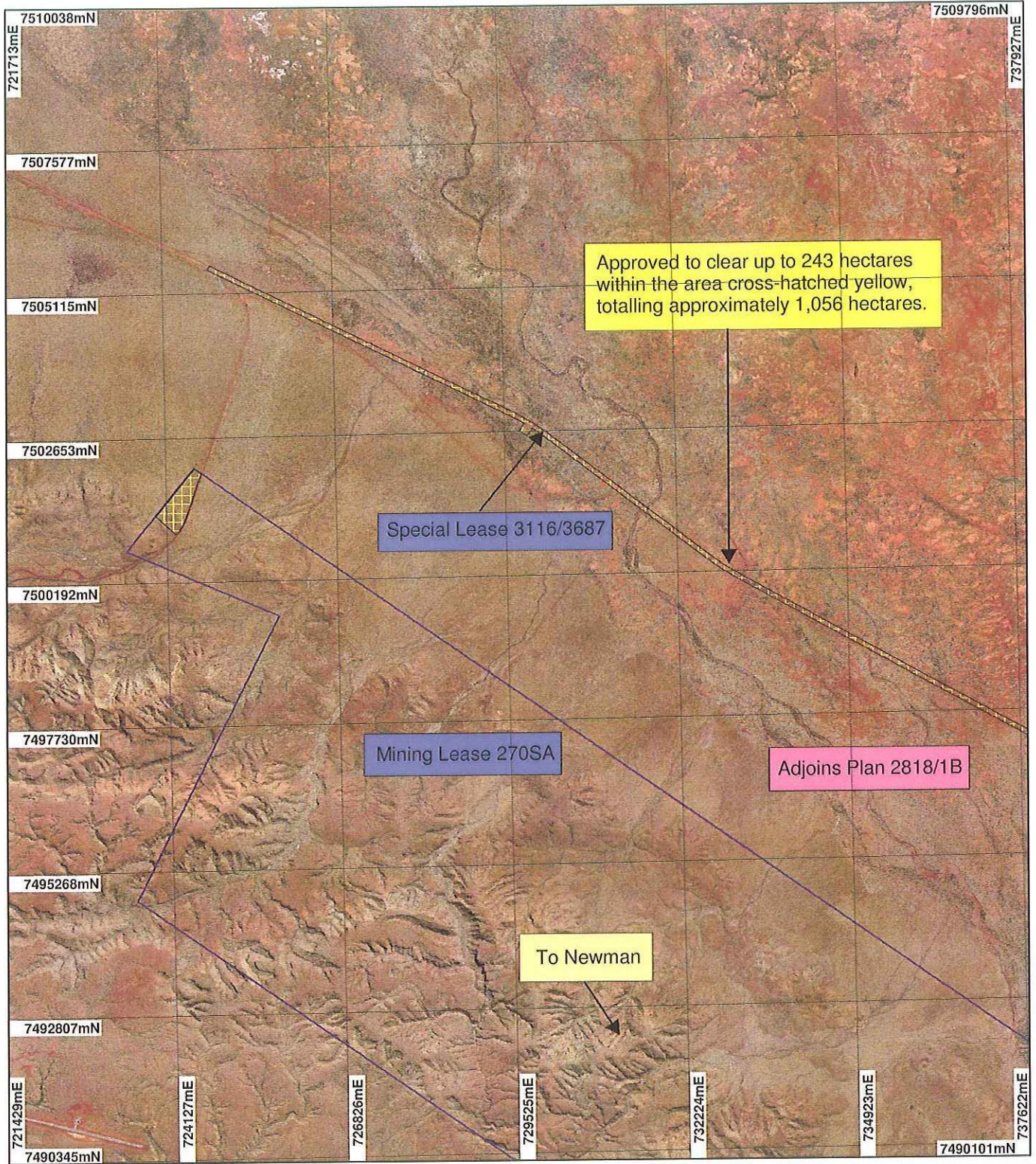


Plan 2818/1A



LEGEND

- Mining Tenements
- Clearing Instruments
- Areas Approved to Clear
- Weeli Wooli 50cm Orthomosaic - Landgate 2004



Scale 1:90000

(Approximate when reproduced at A4)

Geocentric Datum Australia 1994

Note: the data in this map have not been projected. This may result in geometric distortion or measurement inaccuracies.

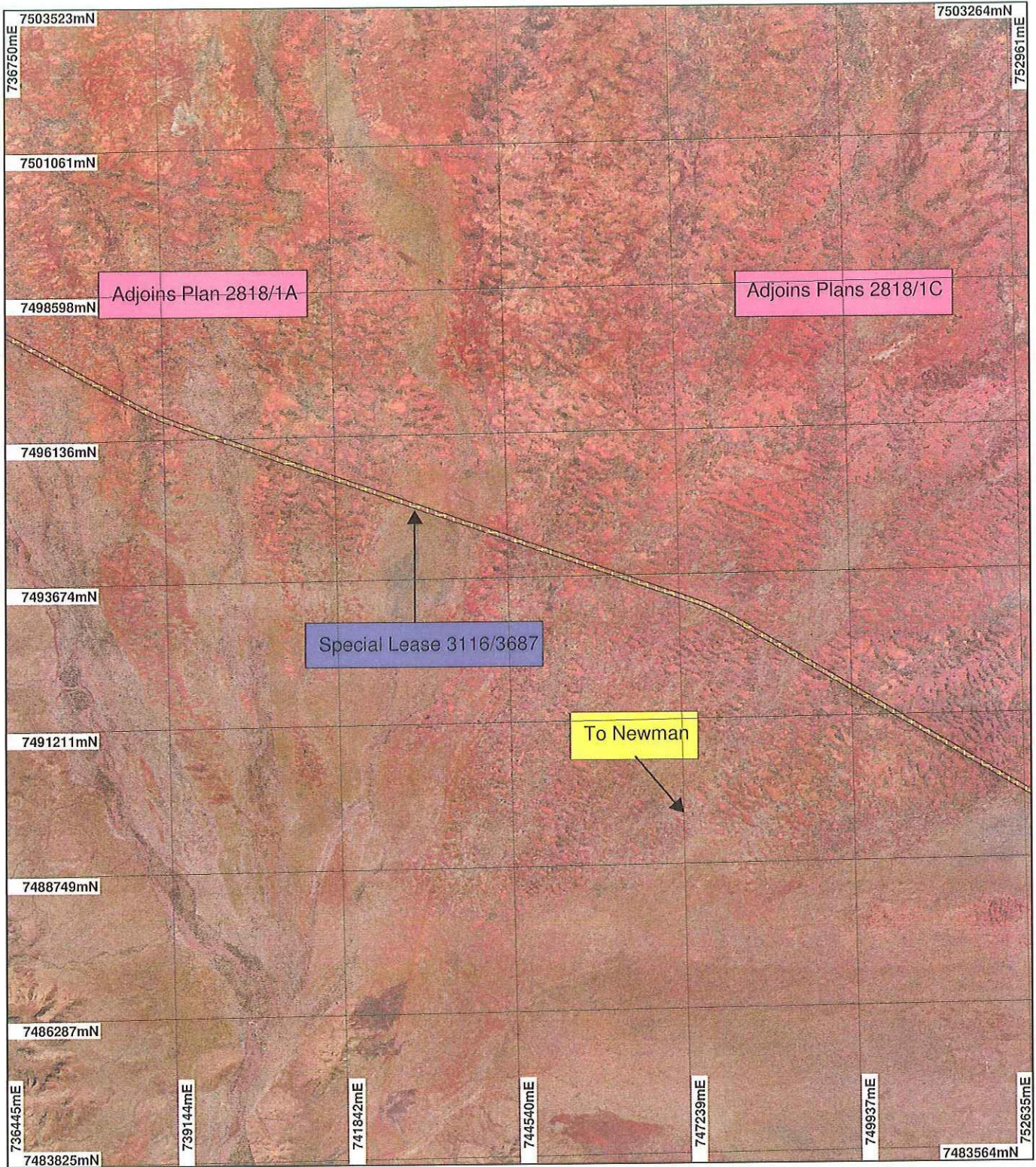
Ian Briggs Date *22/04/02*
 Ian Briggs
 Officer with delegated authority under Section 20 of the Environmental Protection Act 1986

Information derived from this map should be confirmed with the data custodian acknowledged by the agency acronym in the legend.



WA Crown Copyright 2002

Plan 2818/1B



LEGEND

- Clearing Instruments
- Areas Approved to Clear
- Weepi Woolji 50cm
Orthomosaic - Landgate
2004



Scale 1:90000
(Approximate when reproduced at A4)

Geocentric Datum Australia 1994

Note: the data in this map have not been projected. This may result in geometric distortion or measurement inaccuracies.

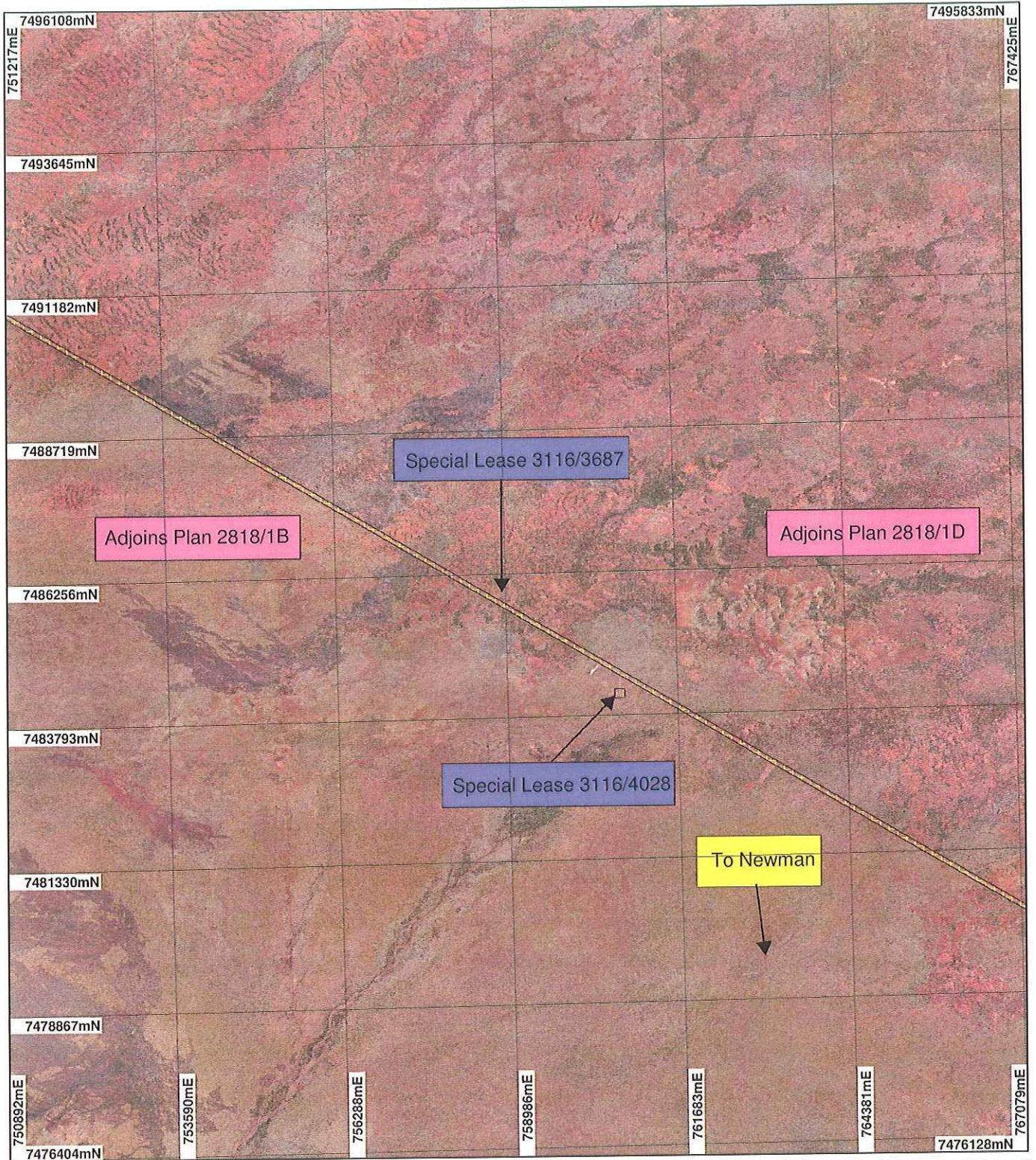
Jan Biggs Date *02/04/19*
Jan Biggs

Officer with delegated authority under Section 20 of the Environmental Protection Act 1986

Information derived from this map should be confirmed with the data custodian acknowledged by the agency acronym in the legend.



Plan 2818/1C



LEGEND

- Clearing Instruments
- Areas Approved to Clear
 - Wellil Woolf 50cm Orthomosaic - Landgate 2004
 - Roy Hill 50cm Orthomosaic - Landgate 2004



Scale 1:90000
(Approximate when reproduced at A4)

Geocentric Datum Australia 1994

Note: the data in this map have not been projected. This may result in geometric distortion or measurement inaccuracies.

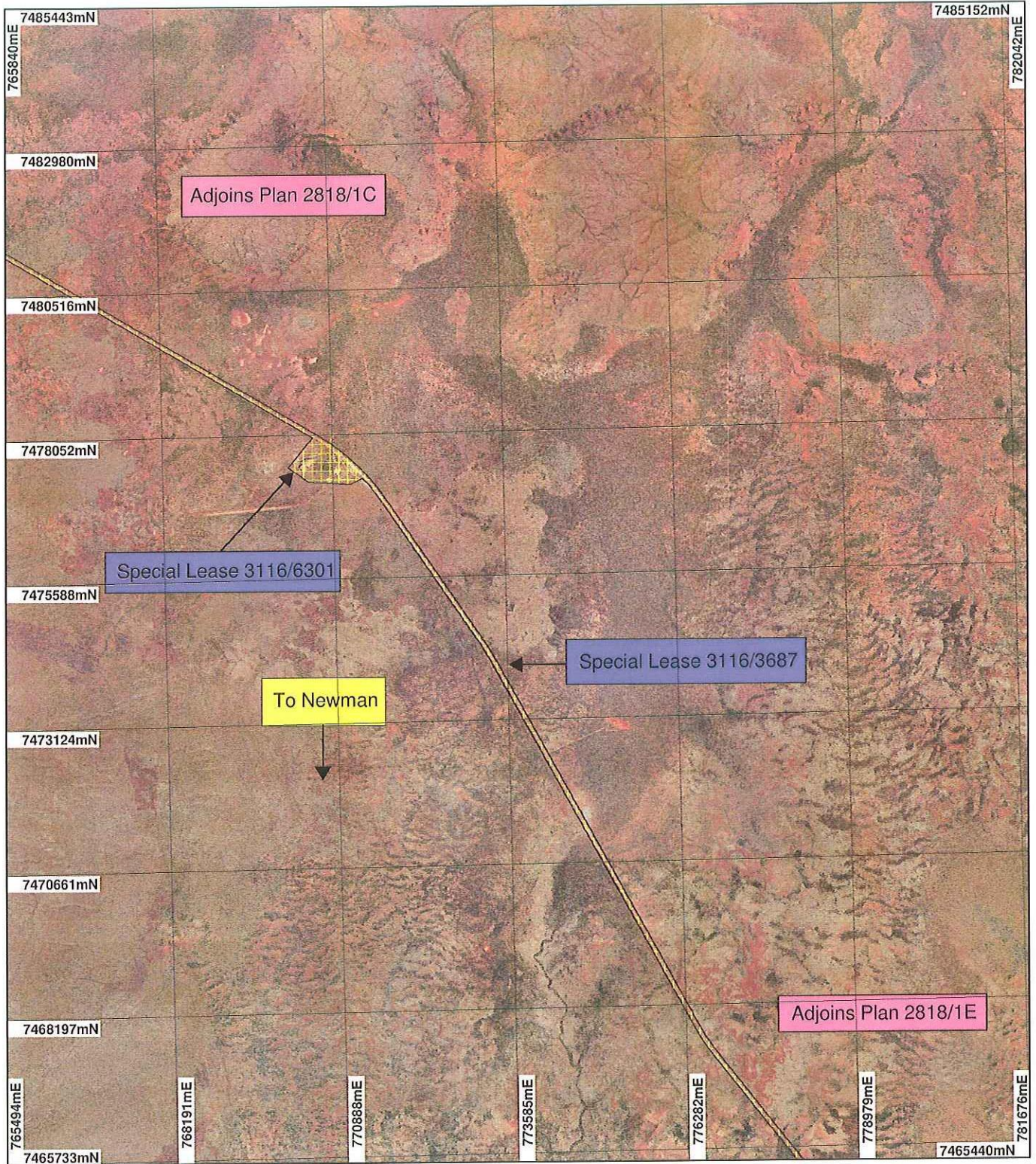
Ian Briggs
Date 02/04/09

Ian Briggs
Officer with delegated authority under Section 20 of the Environmental Protection Act 1986

Information derived from this map should be confirmed with the data custodian acknowledged by the agency acronym in the legend.



Plan 2818/1D



LEGEND

- Clearing Instruments
- Areas Approved to Clear
- Roy Hill 50cm Orthomosaic - Landgate 2004



Scale 1:90000

(Approximate when reproduced at A4)

Geocentric Datum Australia 1994

Note: the data in this map have not been projected. This may result in geometric distortion or measurement inaccuracies.

Ian Briggs Date *02/06/07*
 Ian Briggs

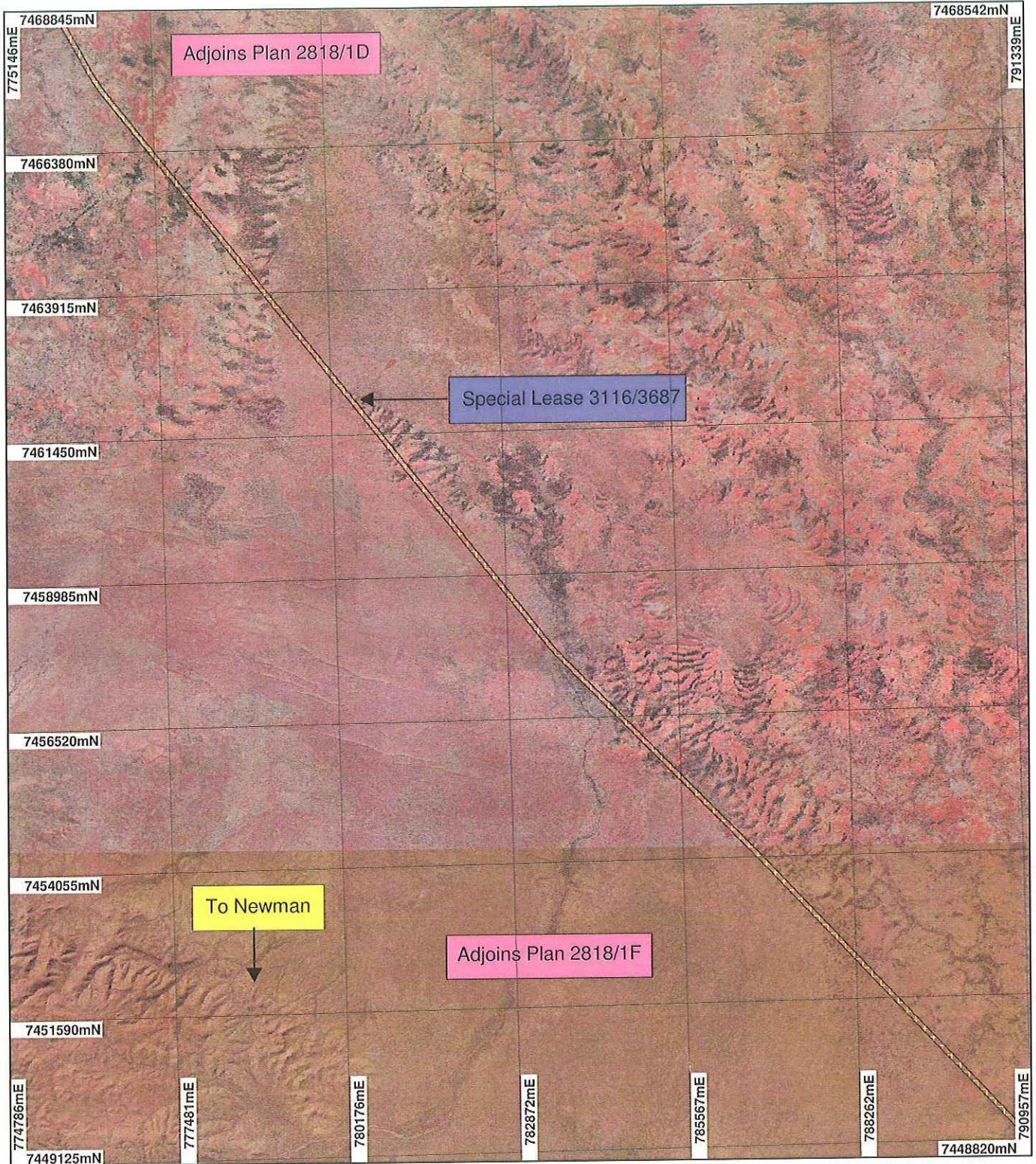
Officer with delegated authority under Section 20 of the Environmental Protection Act 1986

Information derived from this map should be confirmed with the data custodian acknowledged by the agency acronym in the legend.



WA Crown Copyright 2002

Plan 2818/1E



LEGEND

- Clearing Instruments
- Areas Approved to Clear
 - Roy Hill 50cm Orthomosaic - Landgate 2004
 - Newman 1.4m Orthomosaic - Landgate 2003



0 ————— 2.5 km

Scale 1:90000
(Approximate when reproduced at A4)

Geocentric Datum Australia 1994

Note: the data in this map have not been projected. This may result in geometric distortion or measurement inaccuracies.

Ian Briggs Date 02/04/09

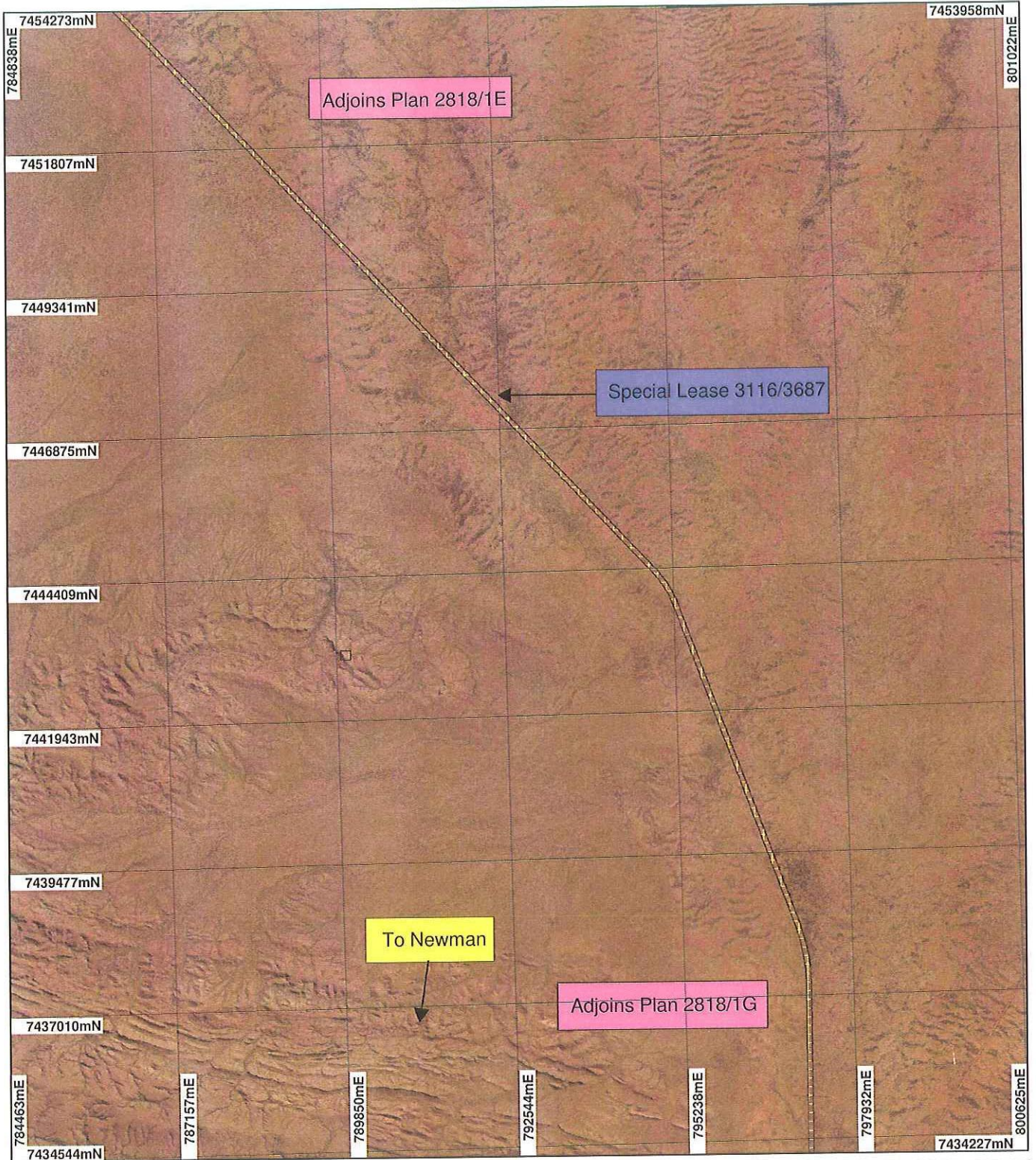
Ian Briggs
Officer with delegated authority under Section 20 of the Environmental Protection Act 1986

Information derived from this map should be confirmed with the data custodian acknowledged by the agency acronym in the legend.



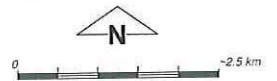
WA Crown Copyright 2002

Plan 2818/1F



LEGEND

- Clearing Instruments
- Areas Approved to Clear
- Newman 1.4m Orthomosaic - Landgate 2003



Geocentric Datum Australia 1994

Note: the data in this map have not been projected. This may result in geometric distortion or measurement inaccuracies.

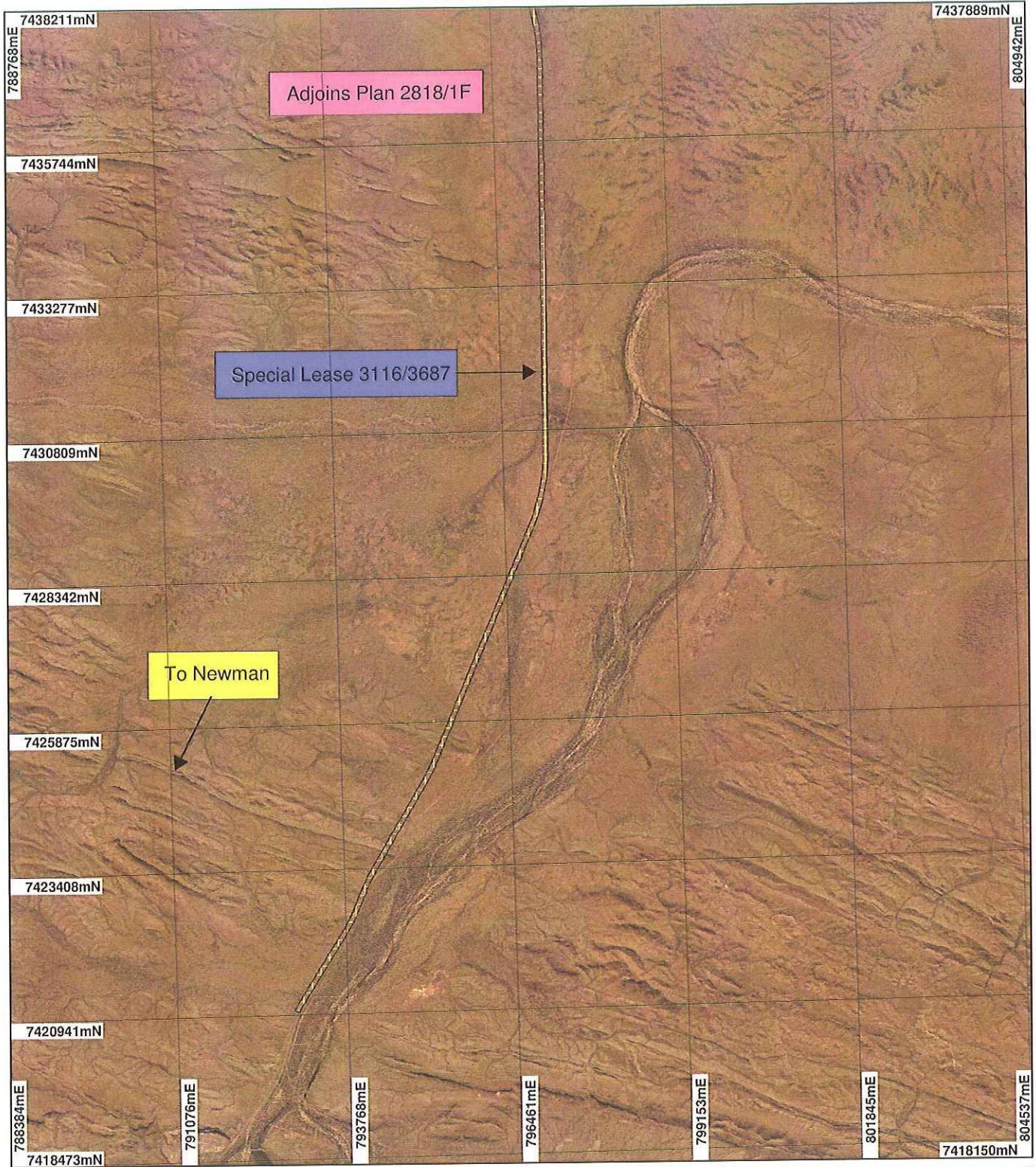
Ian Briggs Date *02/04/09*
Ian Briggs

Officer with delegated authority under Section 20 of the Environmental Protection Act 1986

Information derived from this map should be confirmed with the data custodian acknowledged by the agency acronym in the legend.

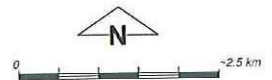


Plan 2818/1G



LEGEND

- Clearing Instruments
- Areas Approved to Clear
 - Newman 1.4m Orthomosaic - Landgate 2003



Scale 1:90000
(Approximate when reproduced at A4)

Geocentric Datum Australia 1994

Note: the data in this map have not been projected. This may result in geometric distortion or measurement inaccuracies.

[Signature] Date *5/2/09*

Ian Briggs
Officer with delegated authority under Section 20 of the Environmental Protection Act 1986

Information derived from this map should be confirmed with the data custodian acknowledged by the agency acronym in the legend.

