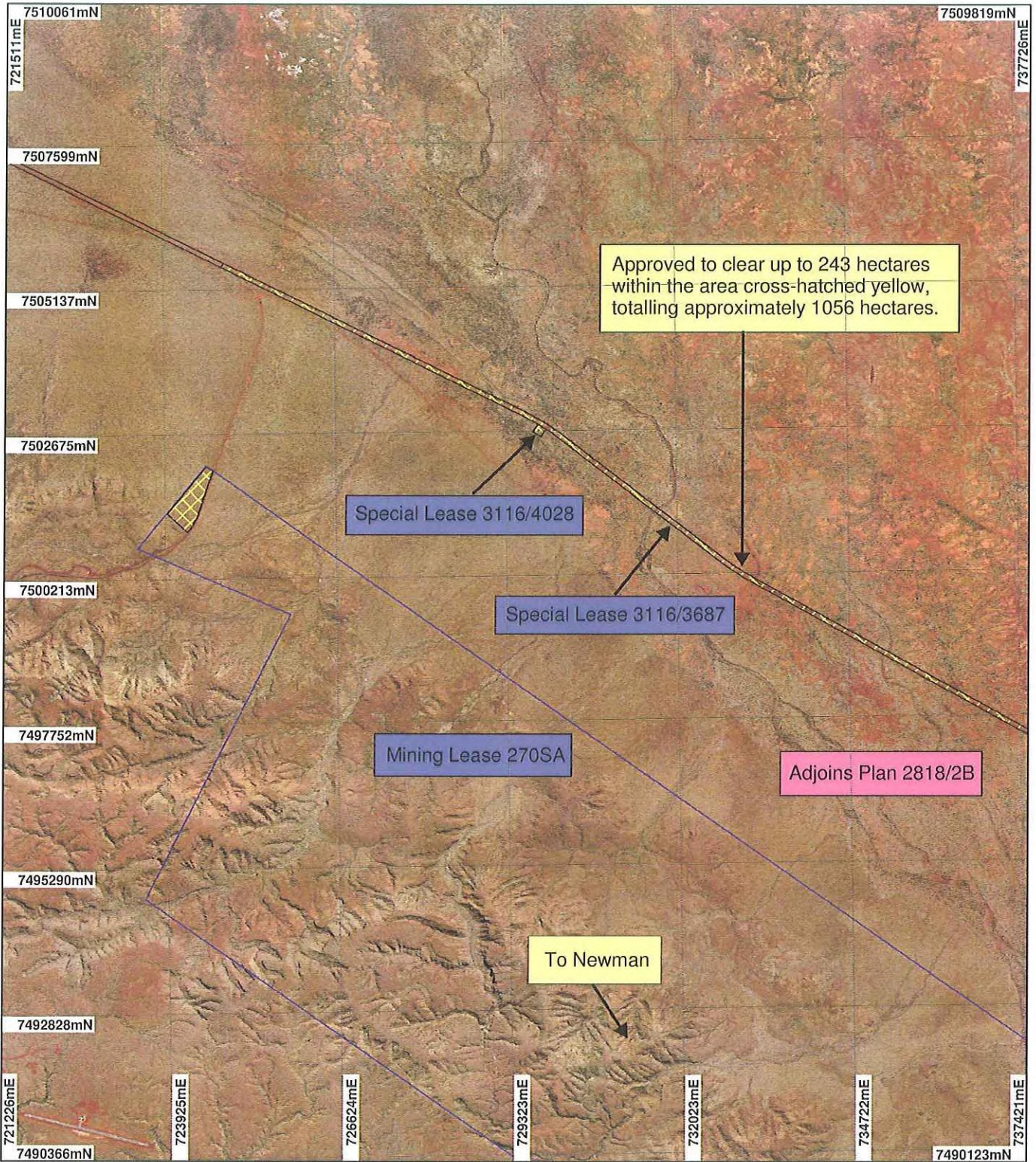
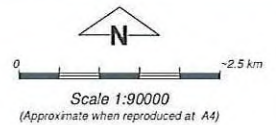


# PLAN 2818/2A



## LEGEND

- Clearing Instruments      Cadastre\_1
- Areas Approved to Clear
  - Mining Tenements
- Weell Woolj 50cm  
Orthomosaic - Landgate  
2004



Geocentric Datum Australia 1994

Note: the data in this map have not been projected. This may result in geometric distortion or measurement inaccuracies.

PHIL GOREY

Officer with delegated authority under Section 20 of the Environmental Protection Act 1986

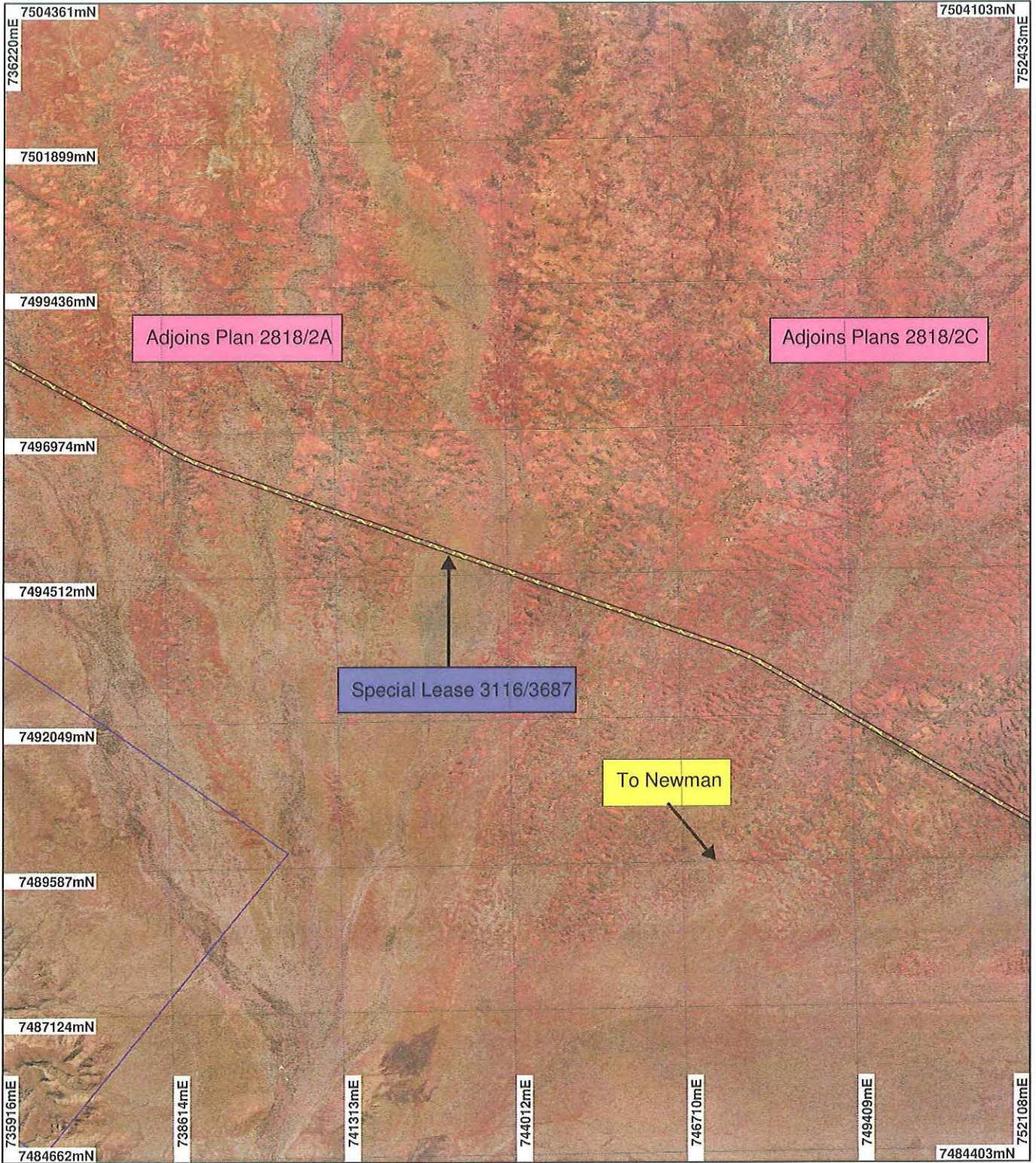
Information derived from this map should be confirmed with the data custodian acknowledged by the agency acronym in the legend.



WA Crown Copyright 2002

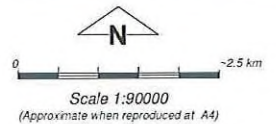


# PLAN 2818/2B



## LEGEND

- Clearing Instruments      Cadastre\_1
- Areas Approved to Clear
  - Mining Tenements
- Weell Woolf 50cm  
Orthomosaic - Landgate  
2004



Geocentric Datum Australia 1994

Note: the data in this map have not been projected. This may result in geometric distortion or measurement inaccuracies.

PHIL GOREY

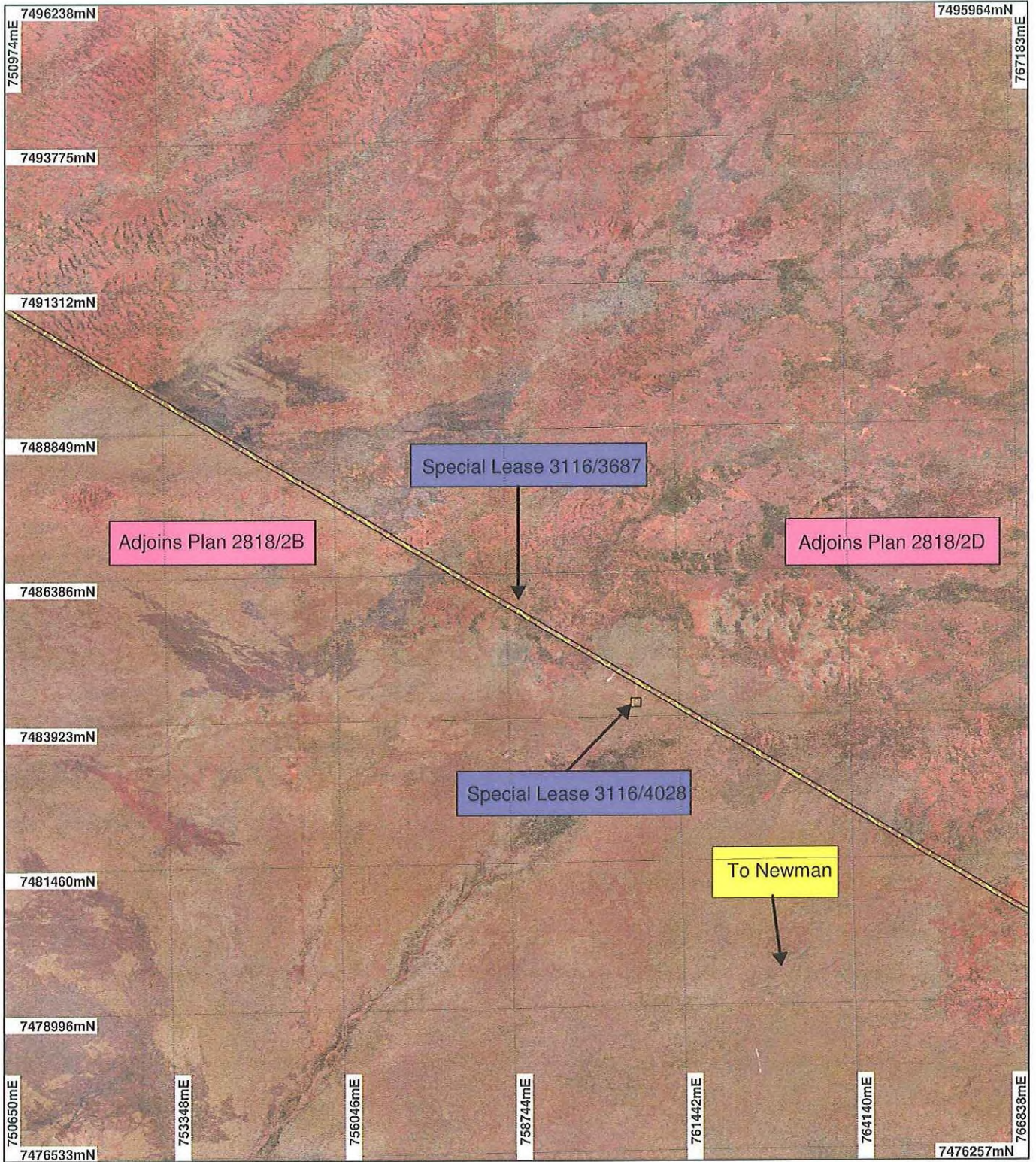
Officer with delegated authority under Section 20 of the Environmental Protection Act 1986

Information derived from this map should be confirmed with the data custodian acknowledged by the agency acronym in the legend.



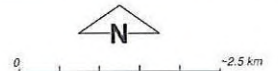


# PLAN 2818/2C



## LEGEND


- Clearing Instruments      Cadastre\_1
- Areas Approved to Clear
  - Roy Hill 50cm Orthomosaic - Landgate 2004
  - Wegil Woolf 50cm Orthomosaic - Landgate 2004



Scale 1:90000  
(Approximate when reproduced at A4)

Geocentric Datum Australia 1994

Note: the data in this map have not been projected. This may result in geometric distortion or measurement inaccuracies.

 Date 25/6/19  
PHIL GOREY

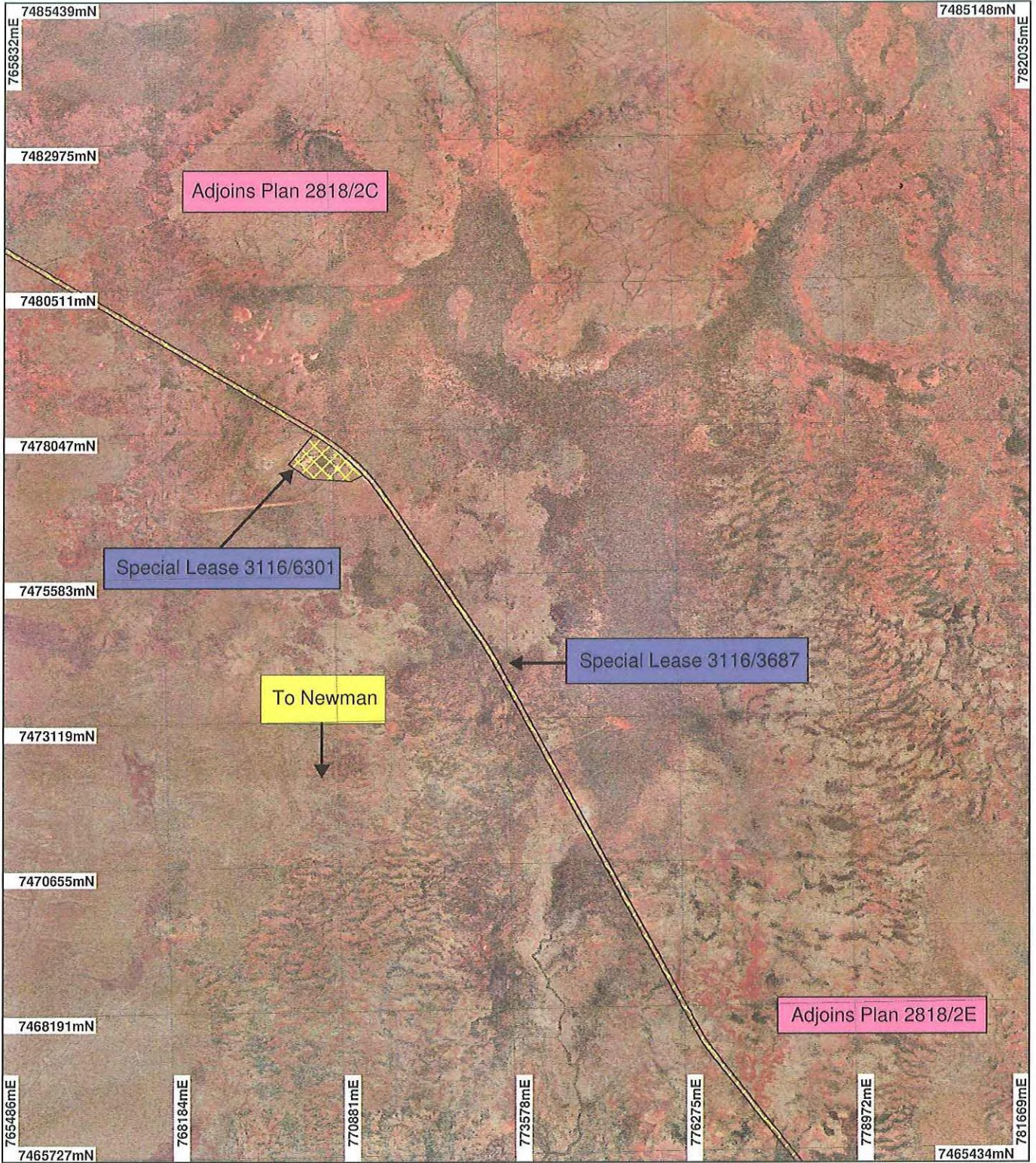
Officer with delegated authority under Section 20 of the Environmental Protection Act 1986

Information derived from this map should be confirmed with the data custodian acknowledged by the agency acronym in the legend.



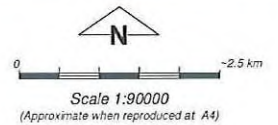


# PLAN 2818/2D



## LEGEND

- Clearing Instruments      Cadastre\_1
- Areas Approved to Clear
  - Roy Hill 50cm Orthomosaic - Landgate 2004
  - Weell Woolf 50cm Orthomosaic - Landgate 2004



Geocentric Datum Australia 1994  
 Note: the data in this map have not been projected. This may result in geometric distortion or measurement inaccuracies.

 Date 25/6/09  
 PHIL GOREY

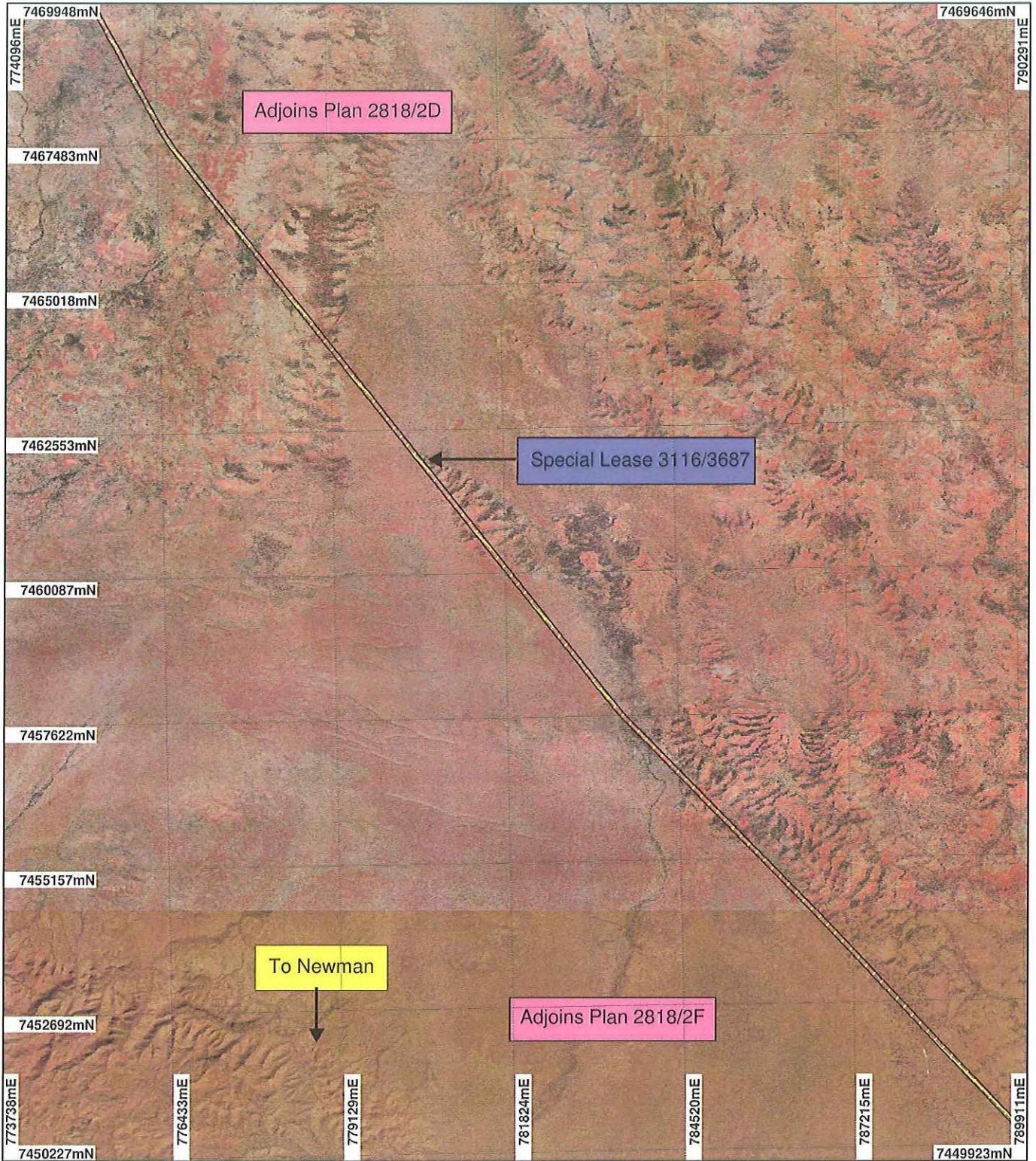
Officer with delegated authority under Section 20 of the Environmental Protection Act 1986

Information derived from this map should be confirmed with the data custodian acknowledged by the agency acronym in the legend.



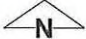


# PLAN 2818/2E



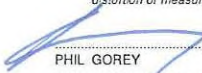
## LEGEND

- |  |            |
|--|------------|
| Clearing Instruments                             | Cadastre_1 |
| <input type="checkbox"/> Areas Approved to Clear |            |
| Roy Hill 50cm Orthomosaic - Landgate 2004        |            |
| Newman 1.4m Orthomosaic - Landgate 2003          |            |

  
 0 ————— 2.5 km  
 Scale 1:90000  
 (Approximate when reproduced at A4)

Geocentric Datum Australia 1994

*Note: the data in this map have not been projected. This may result in geometric distortion or measurement inaccuracies.*

 Date 2/6/9

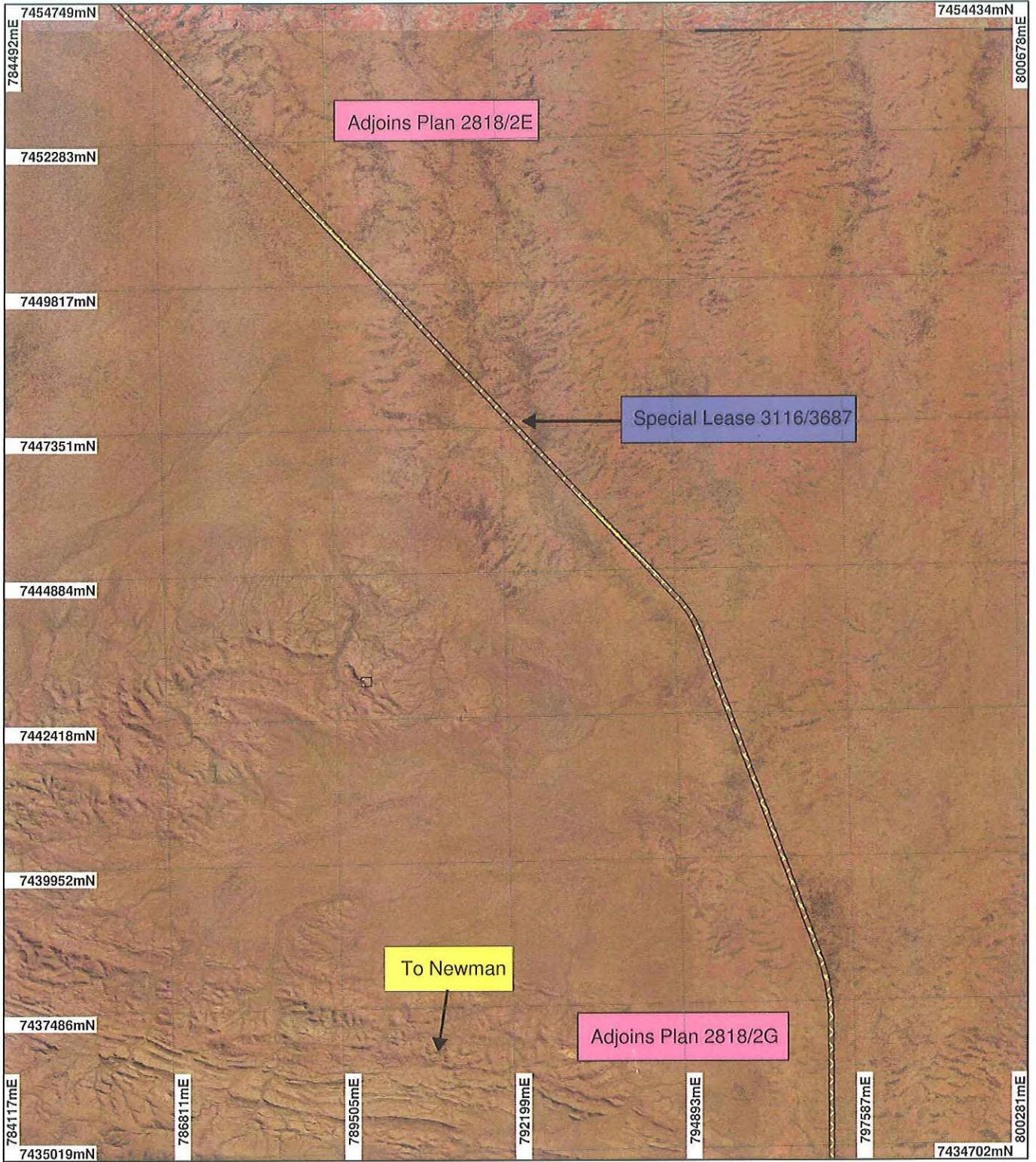
PHIL GOREY  
 Officer with delegated authority under Section 20 of the Environmental Protection Act 1986

Information derived from this map should be confirmed with the data custodian acknowledged by the agency acronym in the legend.



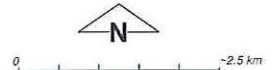


# PLAN 2818/2F



## LEGEND

- |   |           |
|---|-----------|
| Clearing Instruments                      | Cadastr_1 |
| □ Areas Approved to Clear                 |           |
| Roy Hill 50cm Orthomosaic - Landgate 2004 |           |
| Newman 1.4m Orthomosaic - Landgate 2003   |           |



Geocentric Datum Australia 1994

Note: the data in this map have not been projected. This may result in geometric distortion or measurement inaccuracies.

PHIL GOREY Date 2/6/9

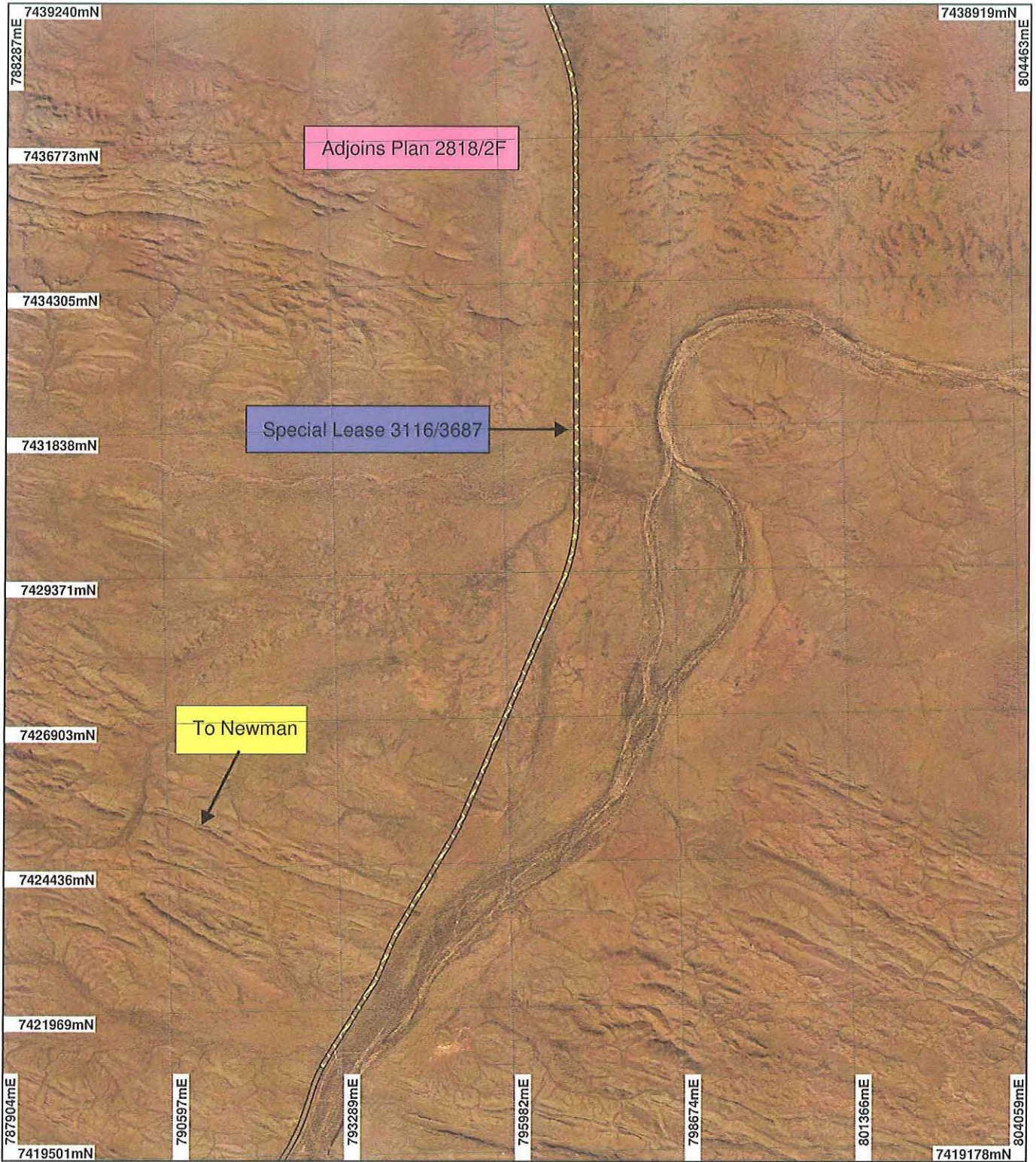
Officer with delegated authority under Section 20 of the Environmental Protection Act 1986

Information derived from this map should be confirmed with the data custodian acknowledged by the agency acronym in the legend.



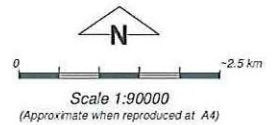


# PLAN 2818/2G



## LEGEND

- Clearing Instruments
- Areas Approved to Clear
- Newman 1.4m Orthomosaic - Landgate 2003
- Cadastre\_1



Geocentric Datum Australia 1994

Note: the data in this map have not been projected. This may result in geometric distortion or measurement inaccuracies.

PHIL GOREY

Date 25/6/14

Officer with delegated authority under Section 20 of the Environmental Protection Act 1986

Information derived from this map should be confirmed with the data custodian acknowledged by the agency acronym in the legend.



WA Crown Copyright 2002