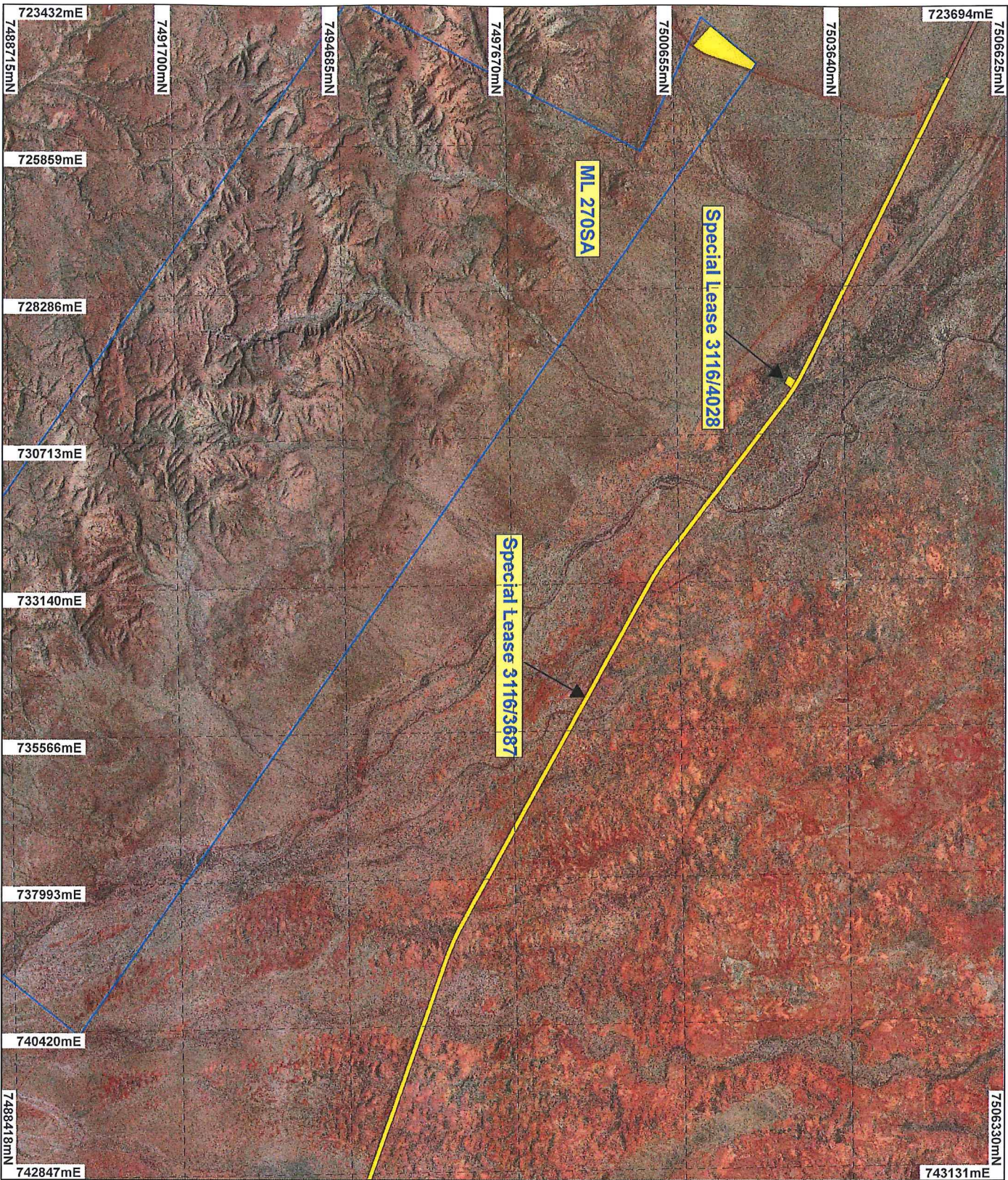


# PLAN 2818/3A



## LEGEND

- Wreil Wooli Socr Orthomosaic - Landgate 2004
- Clearing Instruments
- Areas Approved to Clear
- Mining Tenements
- Cadastral



0 ——— 2.5 km

Scale 1:90000

(Approximate when reproduced at A4)

Geocentric Datum Australia 1994

Note: the data in this map have not been projected. This may result in geometric distortion or measurement inaccuracies.

STEVE TANTALA

Officer with delegated authority under Section 20 of the Environmental Protection Act 1986

Information derived from this map should be confirmed with the data custodian acknowledged by the agency acronym in the legend.

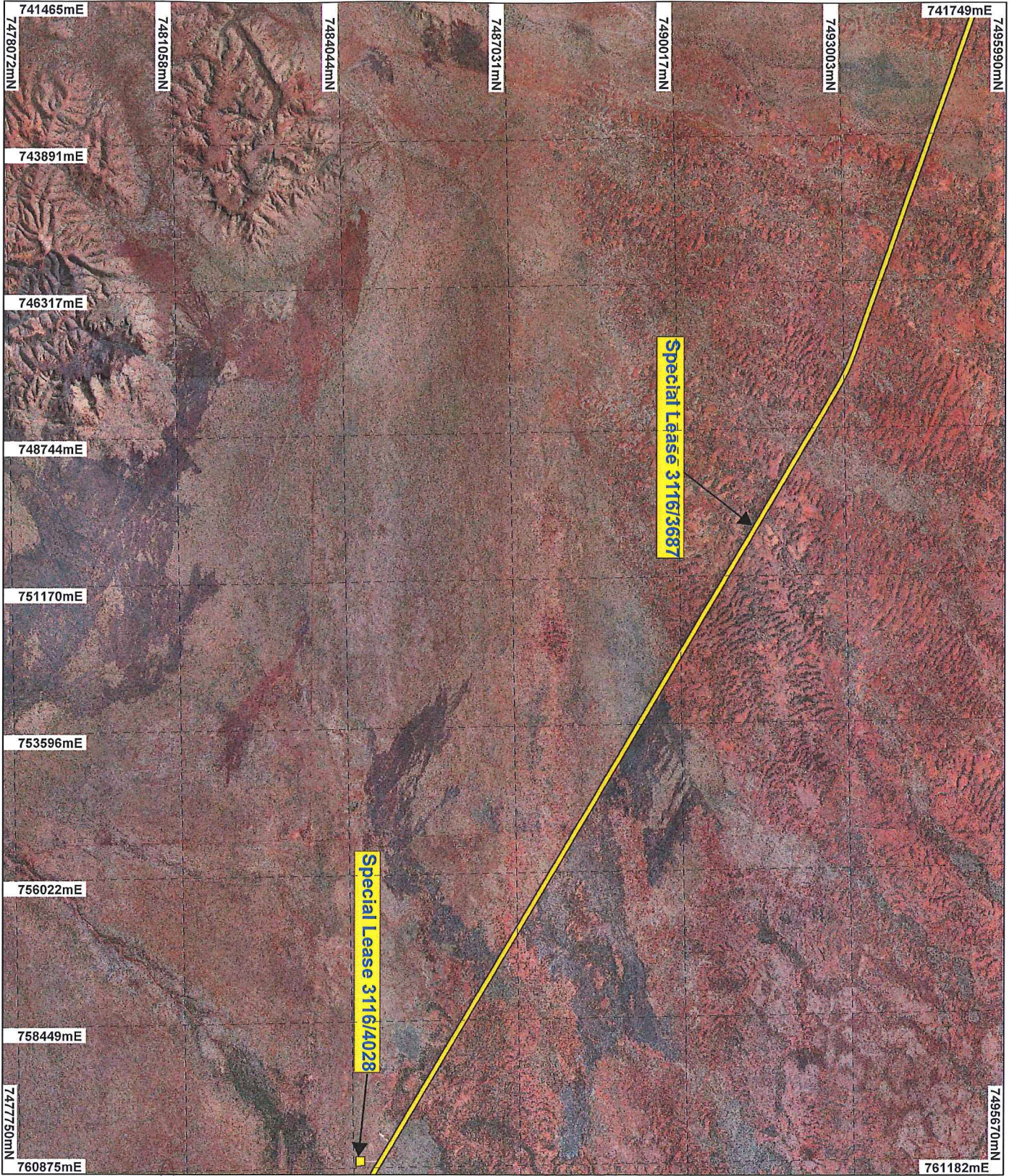
Date: 2/5/14



WA Crown Copyright 2002



# PLAN 2818/3B



## LEGEND

- Roy Hill 50cm Orthomosaic - Landgate 2004
- Wooli Wooli 50cm Orthomosaic - Landgate 2004
- Cadastral Clearing Instruments
- Areas Approved to Clear



0 ——— 2.5 km

Scale 1:90000

(Approximate when reproduced at A4)

Geocentric Datum Australia 1994

Note: the data in this map have not been projected. This may result in geometric distortion or measurement inaccuracies.

STEVE TANTALA  
Date: 7/9/14

Officer with delegated authority under Section 20 of the Environmental Protection Act 1986

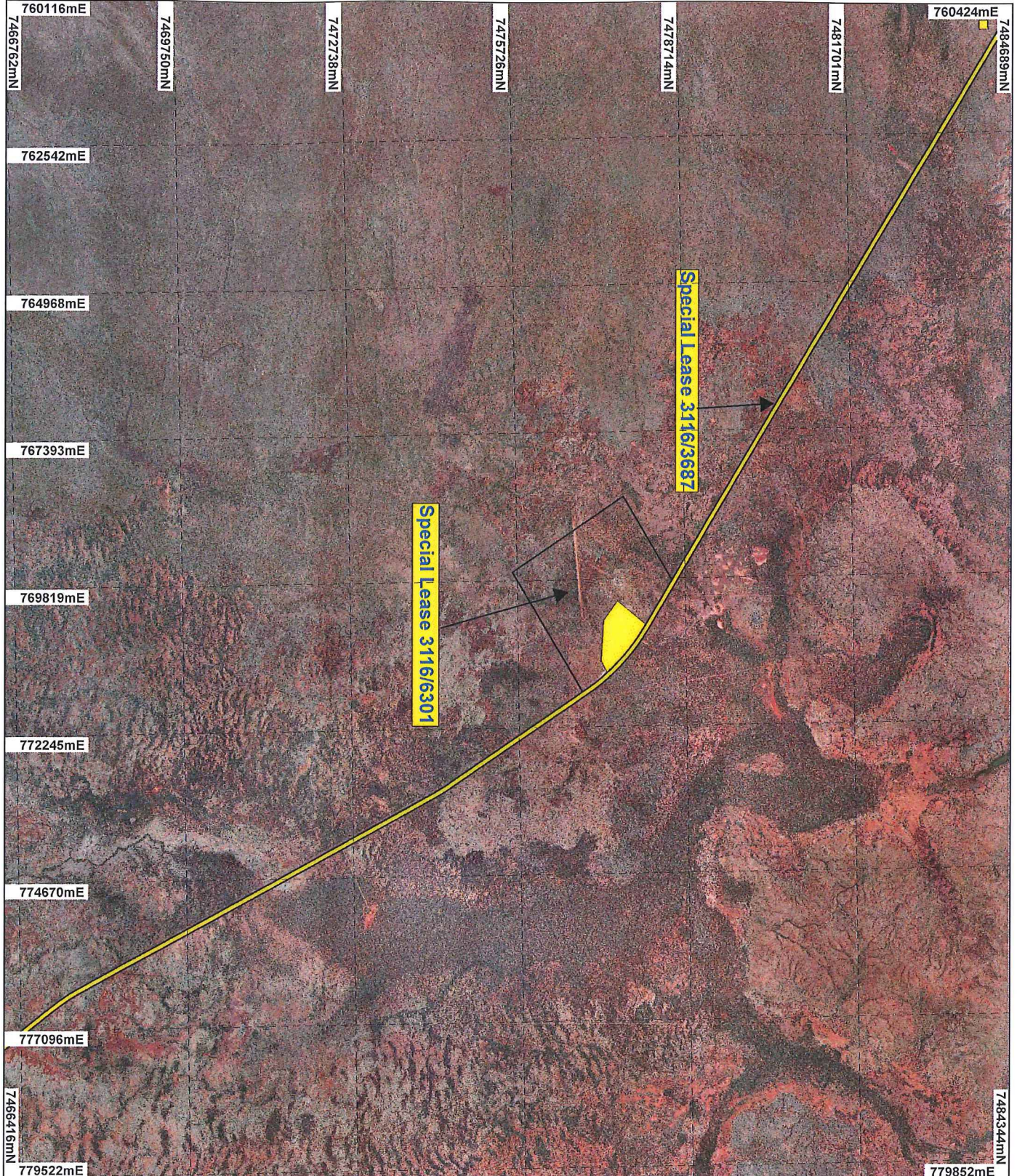
Information derived from this map should be combined with the data contained and acknowledged by the agency acronym in the legend.



MA Crown Copyright 2002



# PLAN 2818/3C



## LEGEND

- Maell Woolli 50cm Orthomosaic - Landgate 2004
- Clearing Instruments
- Areas Approved to Clear
- Cadastre
- Roy Hill 50cm Orthomosaic - Landgate 2004



Scale 1:90000  
(Approximate when reproduced at A4)

Geocentric Datum Australia 1994

Note: The data in this map have not been projected. This may result in geometric distortion or measurement inaccuracies.

STEVE TANTALA Date: 2/10/14

Officer with delegated authority under Section 20 of the Environmental Protection Act 1986

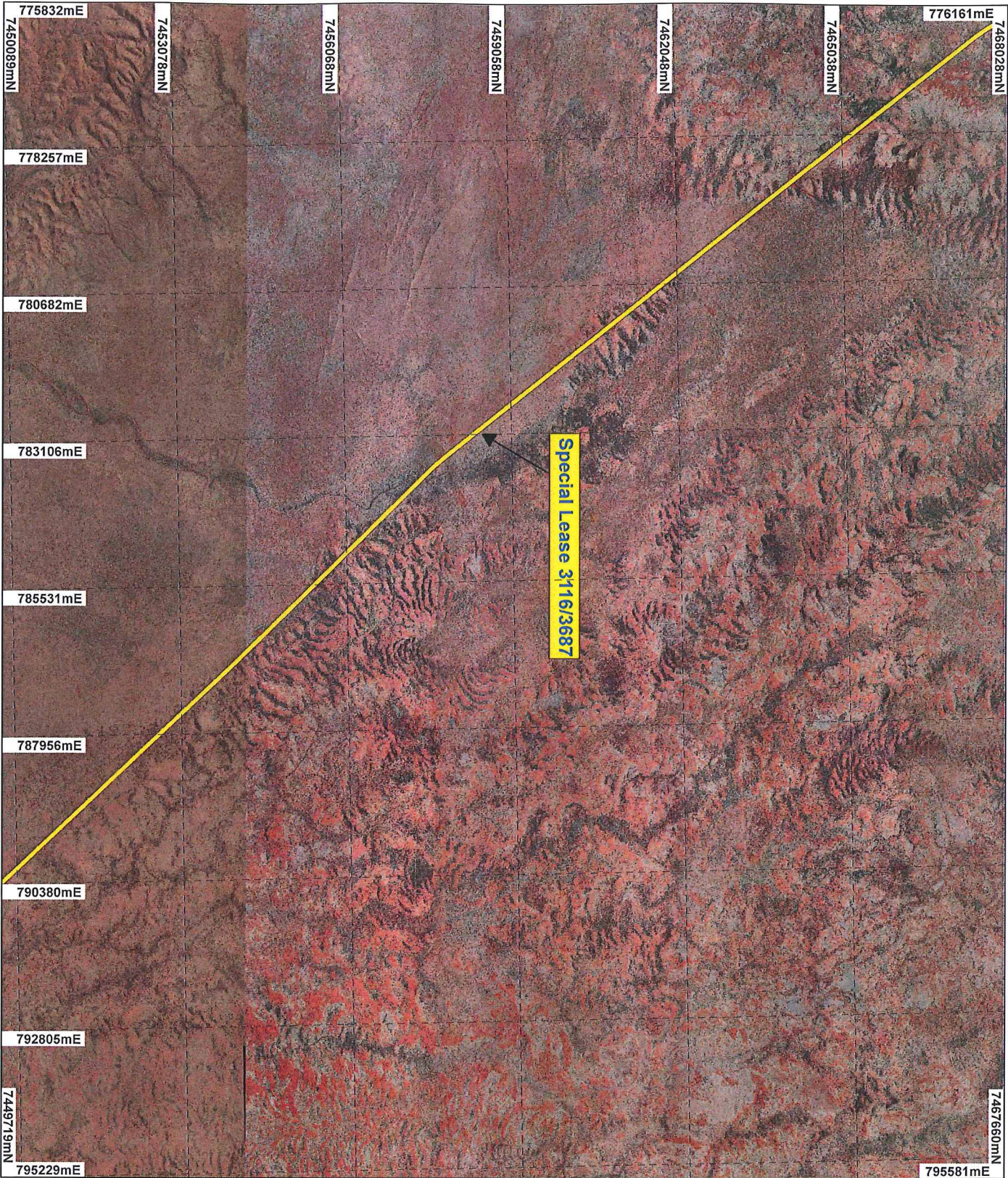
Information derived from this map should be confirmed with the data custodian acknowledged by the agency acronym in the legend.



WA Crown Copyright 2002

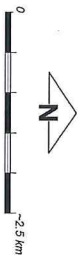


# PLAN 2818/3D



## LEGEND

- Clearing Instruments**
- Areas Approved to Clear
- Cadastre
- Roy Hill 50cm Orthomosaic - Landgate 2004
- Newman 1.4m Orthomosaic - Landgate 2003



Geocentric Datum Australia 1994

Note: the data in this map have not been projected. This may result in geometric distortion or measurement inaccuracies.

STEVE TANTALA

Officer with delegated authority under Section 20 of the Environmental Protection Act 1986

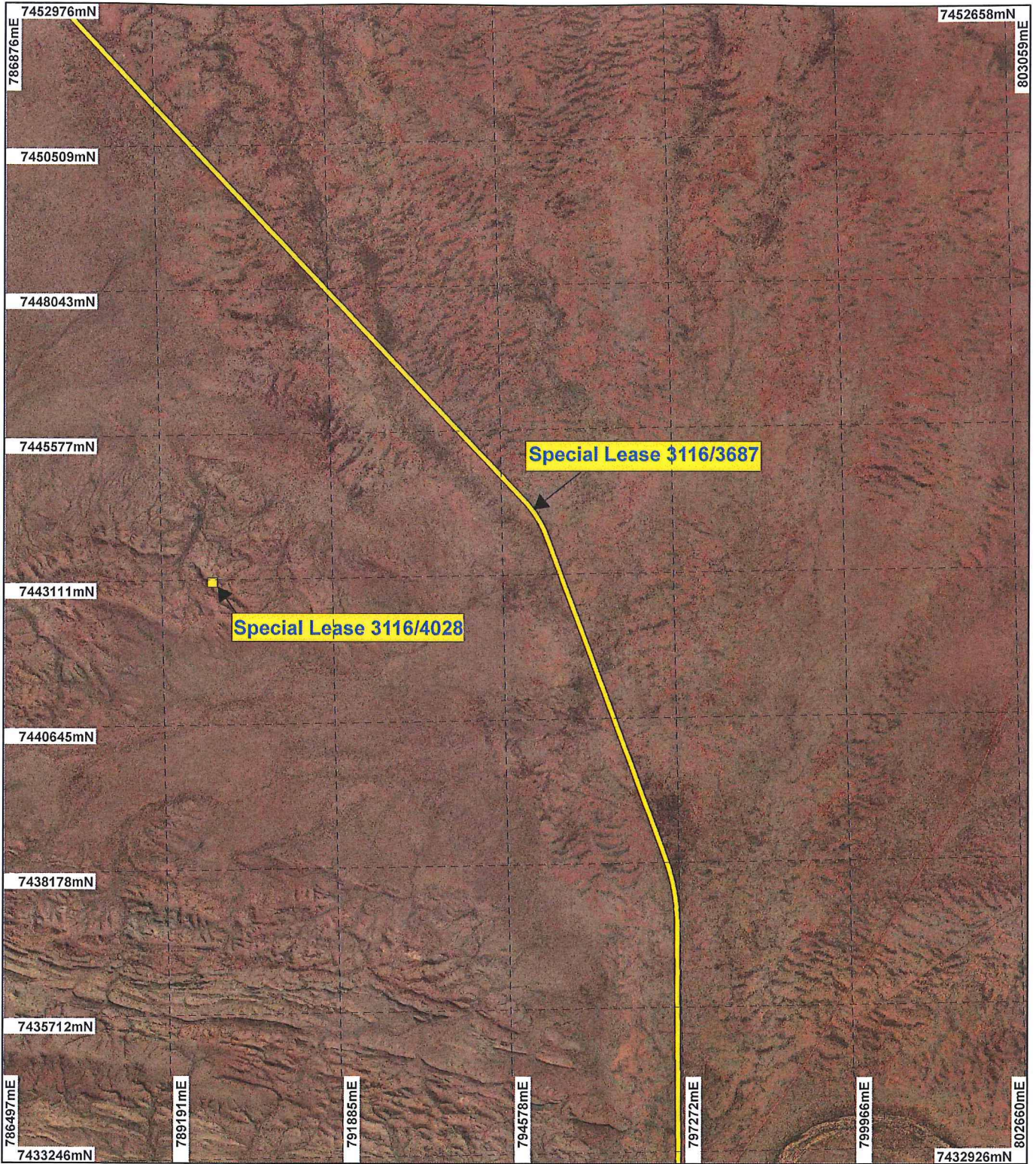
Information derived from this map should be confirmed with the data custodian acknowledged by the agency acronym in the legend.



WA Crown Copyright 2002

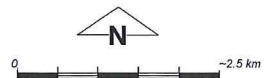


# PLAN 2818/3E



## LEGEND

- Cadastre
  - Clearing Instruments
  - Areas Approved to Clear
- Newman 1.4m Orthomosaic - Landgate 2003



Geocentric Datum Australia 1994

Note: the data in this map have not been projected. This may result in geometric distortion or measurement inaccuracies.

..... Date ..... 1/8/14

STEVE TANTALA

Officer with delegated authority under Section 20 of the Environmental Protection Act 1986

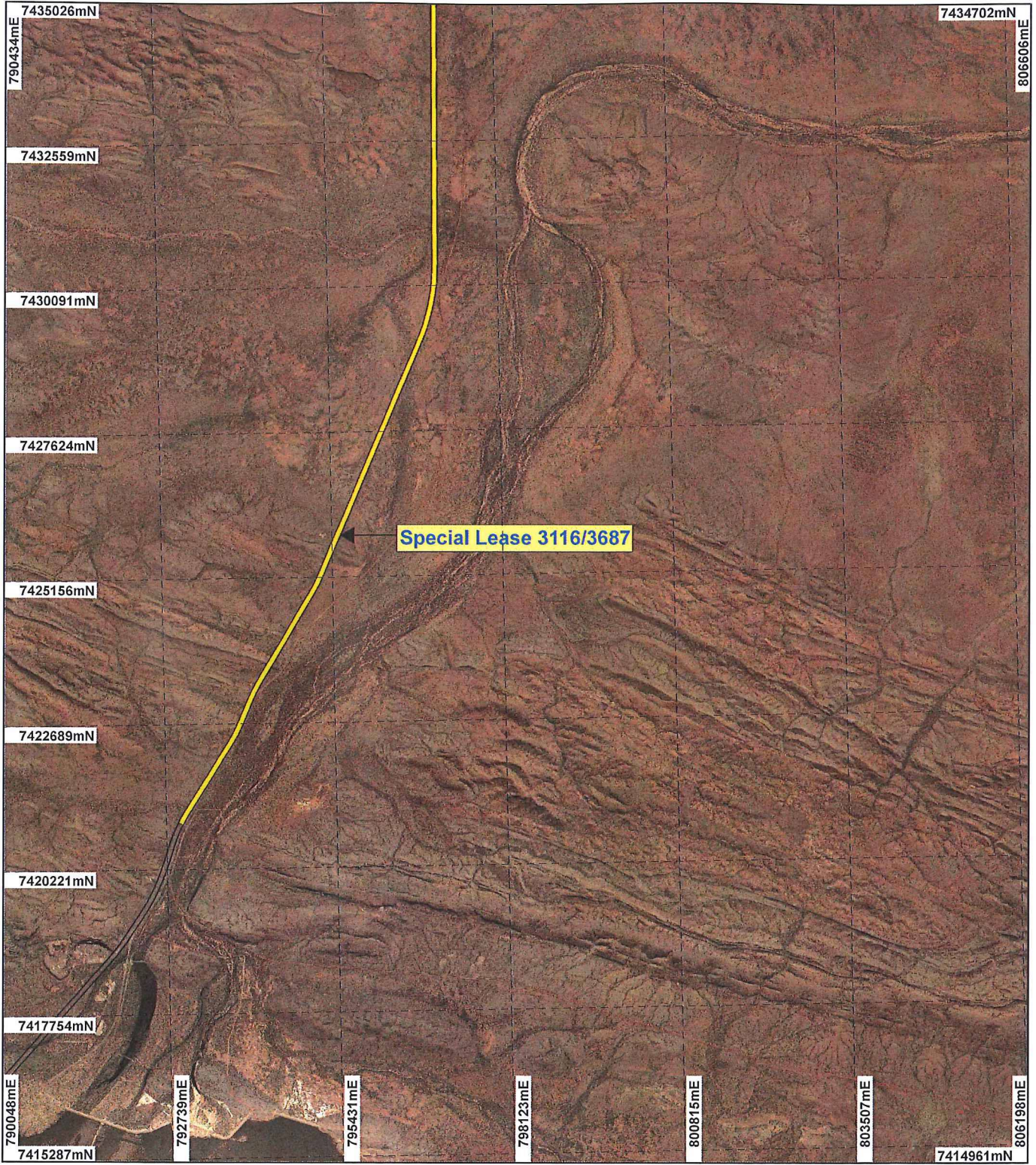
Information derived from this map should be confirmed with the data custodian acknowledged by the agency acronym in the legend.



WA Crown Copyright 2002



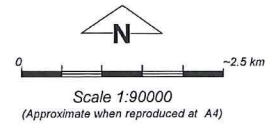
# PLAN 2818/3F



Special Lease 3116/3687

## LEGEND

- Cadastre
  - Clearing Instruments
  - Areas Approved to Clear
- Newman 1.4m Orthomosaic - Landgate 2003



STEVE TANTALA Date 2/8/17

Officer with delegated authority under Section 20 of the Environmental Protection Act 1986  
Information derived from this map should be confirmed with the data custodian acknowledged by the agency acronym in the legend.

