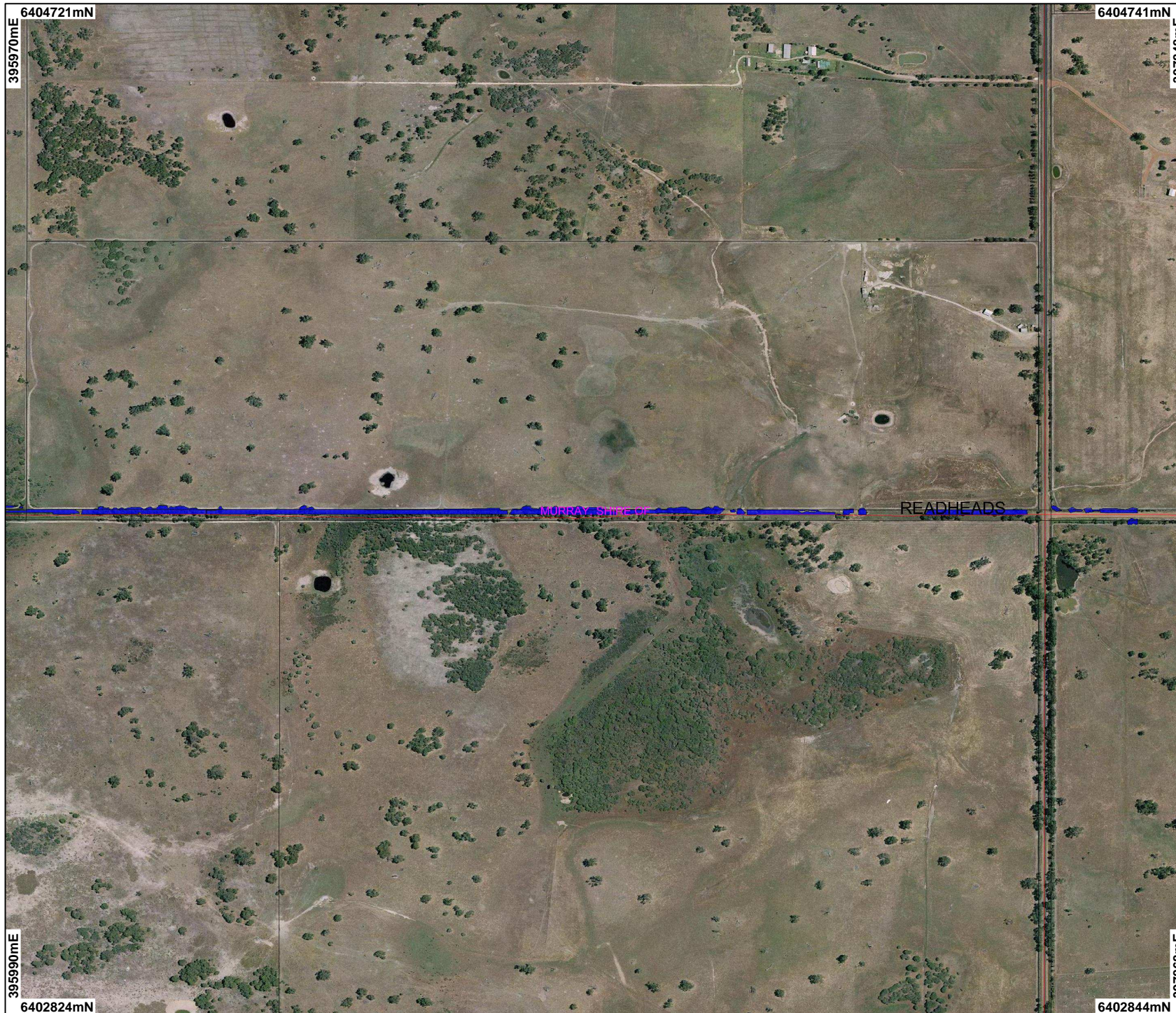


# CPS 2833/1 - Map F



## LEGEND

### Clearing Instruments

- Areas Applied to Clear
- Areas Subject to Conditions
- Areas Approved to Clear
- / Road Centrelines
- Local Government Authorities
- Cadastre

- ☐ Freehold
- ☐ Crown Reserve
- ☐ State Forest / Timber Reserve
- ☐ Marine Park
- ☐ Crown Lease
- ☐ Lease / Reserve
- ☐ Lease on State Forest / Timber Reserve
- ☐ Public Roads
- ☐ Unallocated Crown Land
- ☐ Water



0 ————— 250 m

Scale 1:9097

(Approximate when reproduced at A4)

Geocentric Datum Australia 1994

*Note: the data in this map have not been projected. This may result in geometric distortion or measurement inaccuracies.*

..... Date .....

Officer with delegated authority under Section 20 of the Environmental Protection Act 1986

Information derived from this map should be confirmed with the data custodian acknowledged by the agency acronym in the legend.



Department of Environment and Conservation

WA Crown Copyright 2002