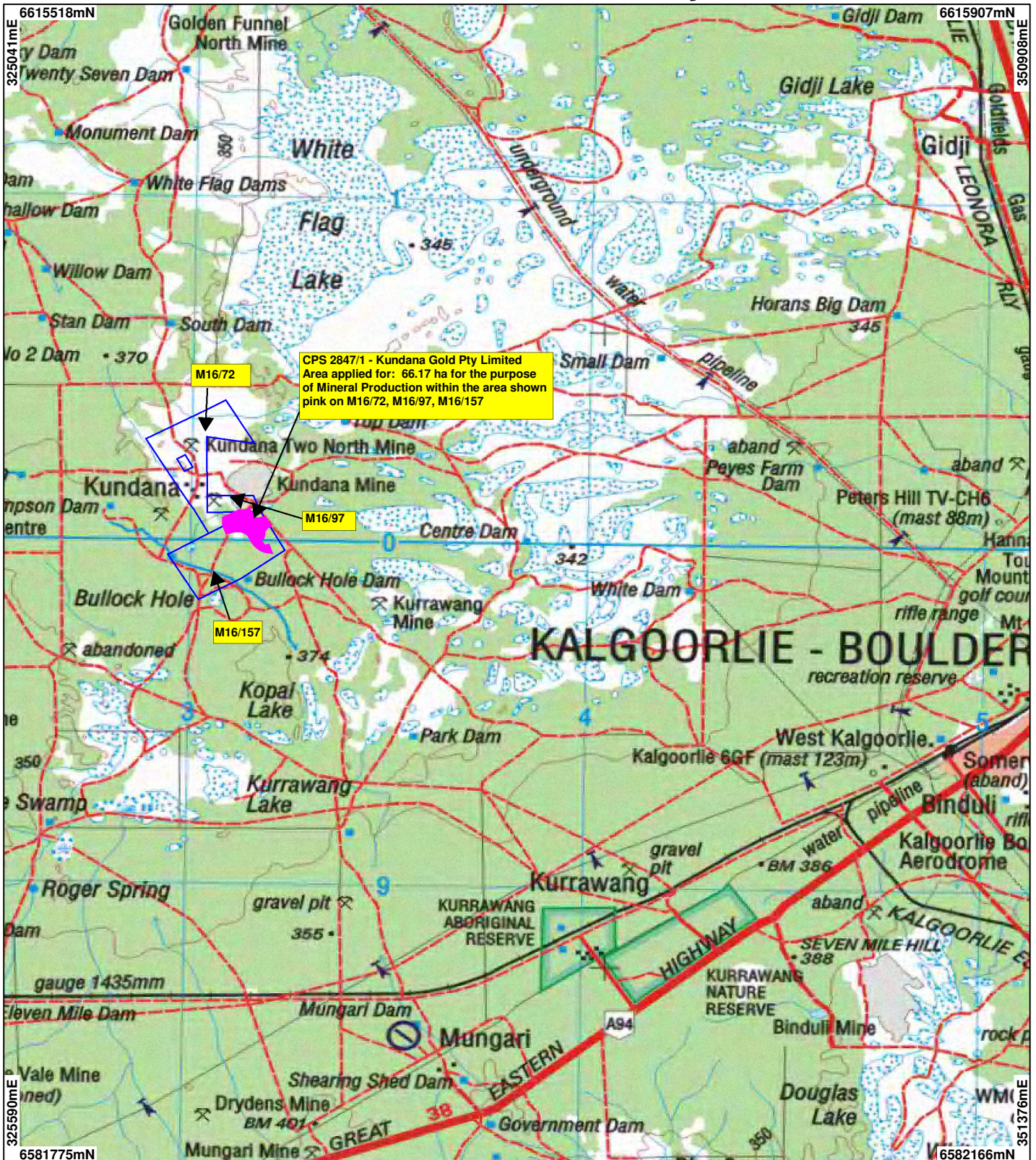


# CPS 2847/1 - Kundana Gold Pty Limited



## LEGEND

- Mining Tenements
- Clearing Instruments
- Areas Applied to Clear
- NATMAP 250K Series Mapping  
- GA 08/03



0  ~3.75 km

Scale 1:150000

(Approximate when reproduced at A4)

Geocentric Datum Australia 1994

Note: the data in this map have not been projected. This may result in geometric distortion or measurement inaccuracies.

..... Date .....

Officer with delegated authority under Section 20 of the Environmental Protection Act 1986

Information derived from this map should be confirmed with the data custodian acknowledged by the agency acronym in the legend.

