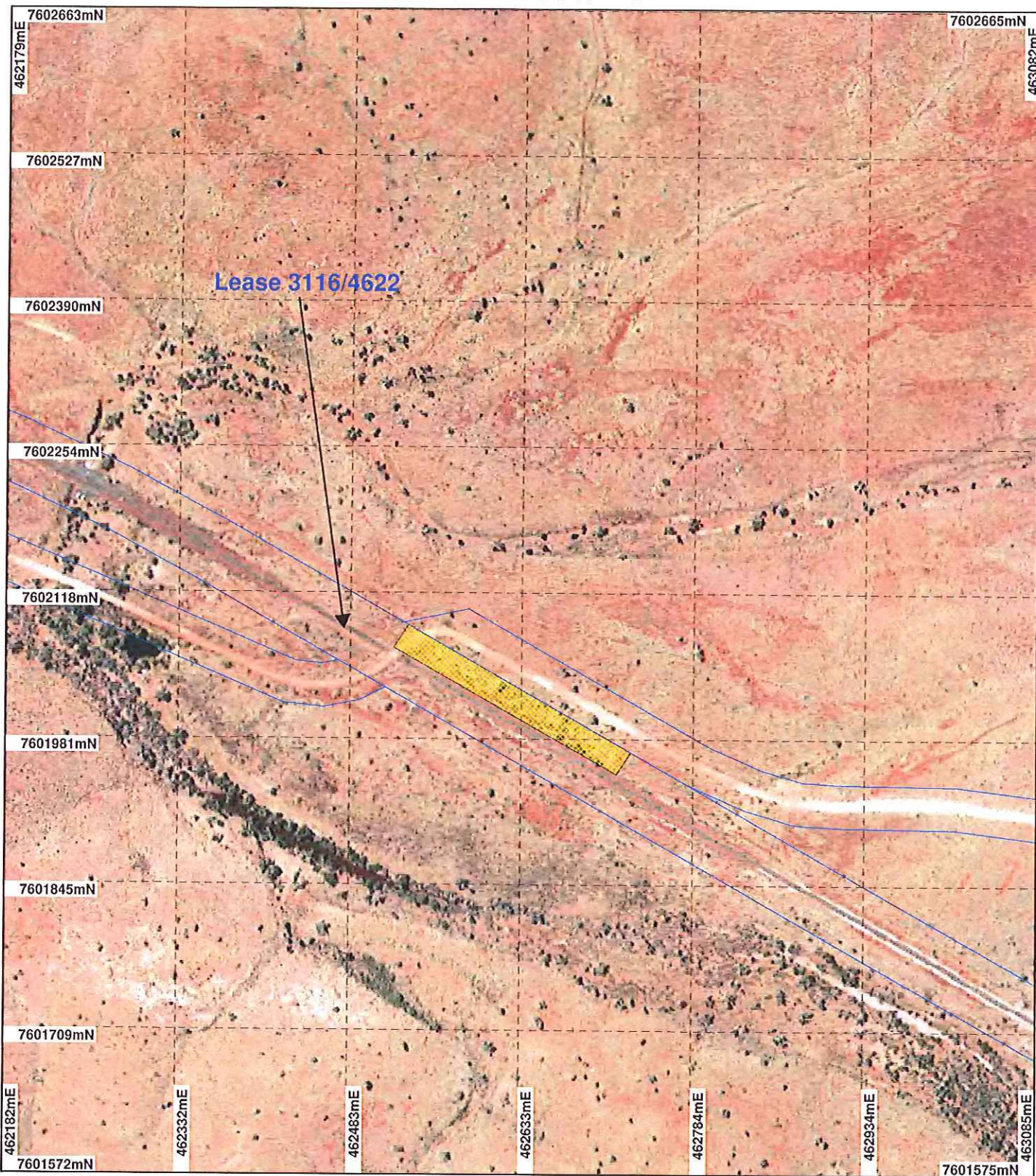


# PLAN 2869/2A



## LEGEND

### Clearing Instruments

- Areas Approved to Clear
  - Cadastre
- Elvire 1.4m Orthomosaic - Landgate 2000



Scale 1:5000  
(Approximate when reproduced at A4)

Geocentric Datum Australia 1994

Note: the data in this map have not been projected. This may result in geometric distortion or measurement inaccuracies.

*V. Anderson* Date: 24/11/12

KIM ANDERSON

Officer with delegated authority under Section 20 of the Environmental Protection Act 1986

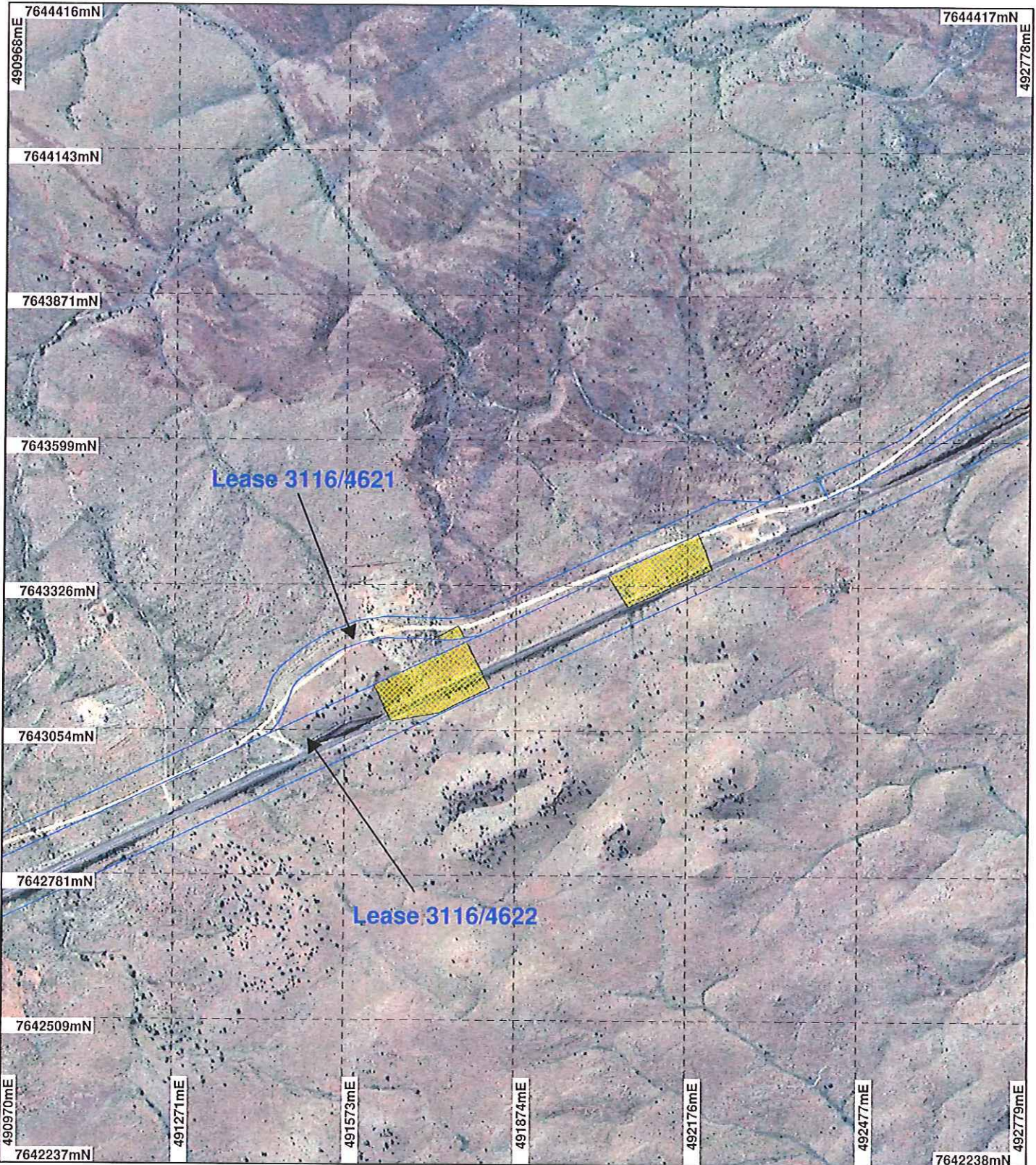
Information derived from this map should be confirmed with the data custodian acknowledged by the agency acronym in the legend.



WA Crown Copyright 2002



# PLAN 2869/2B



## LEGEND

### Clearing Instruments

-  Areas Approved to Clear
-  Cadastre
- Pindri Hills 1.4m Orthomosaic - Landgate 2000



Scale 1:10000

(Approximate when reproduced at A4)

Geocentric Datum Australia 1994

Note: the data in this map have not been projected. This may result in geometric distortion or measurement inaccuracies.

*[Handwritten Signature]* Date 29/11/12

KIM ANDERSON

Officer with delegated authority under Section 20 of the Environmental Protection Act 1996

Information derived from this map should be confirmed with the data custodian acknowledged by the agency acronym in the legend.

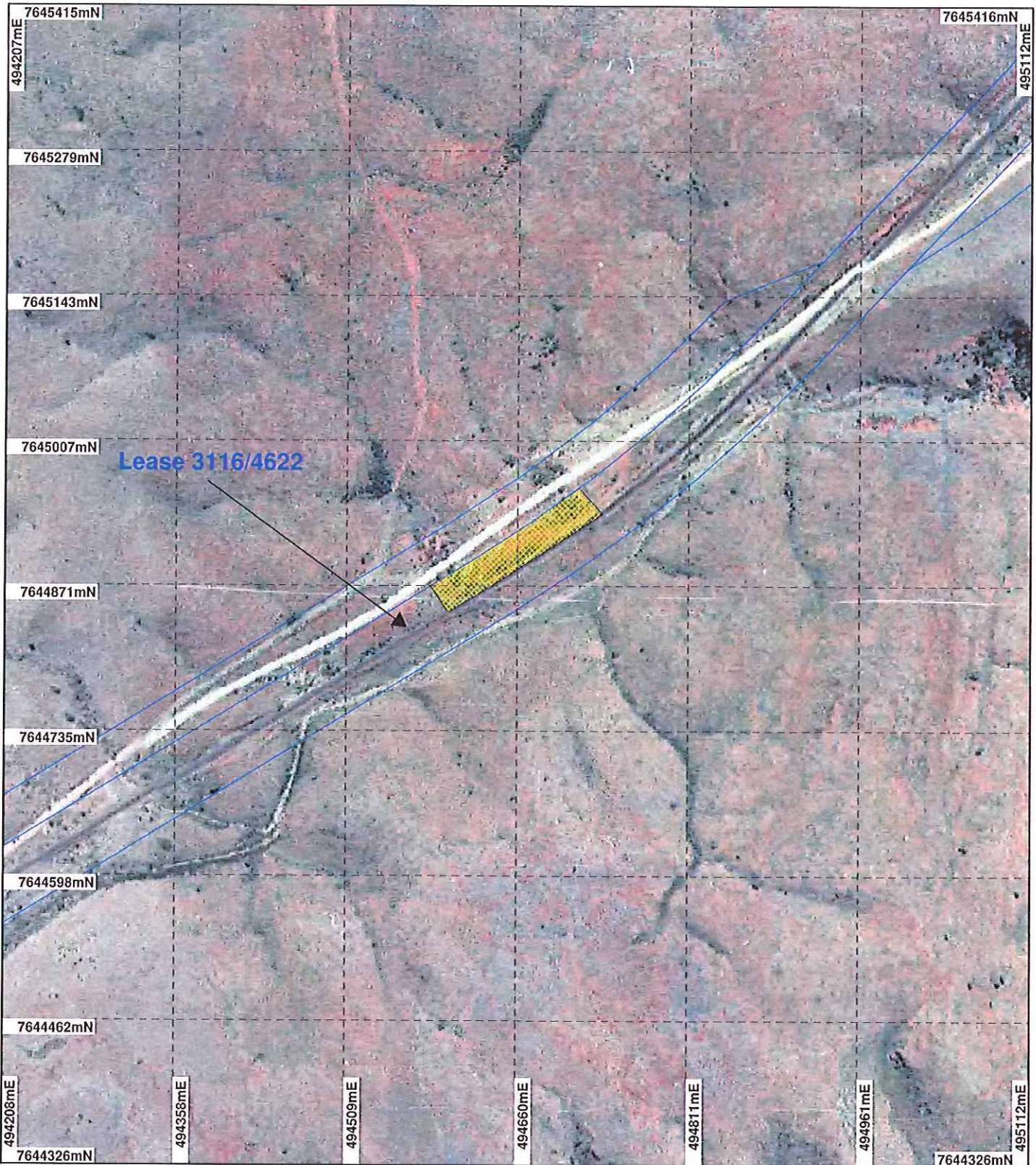


WA Crown Copyright 2002

\* Project Data. This data has not been quality assured. Please contact map author for details.



# PLAN 2869/2C



Lease 3116/4622

## LEGEND

### Clearing Instruments

- Areas Approved to Clear
- Cadastre
- Pindri Hills 1.4m Orthomosaic - Landgate 2000



Scale 1:5000  
(Approximate when reproduced at A4)

Geocentric Datum Australia 1994

Note: the data in this map have not been projected. This may result in geometric distortion or measurement inaccuracies.

*[Handwritten Signature]* Date: 29/11/12

**KIM ANDERSON**  
Officer with delegated authority under Section 20 of the Environmental Protection Act 1986

Information derived from this map should be confirmed with the data custodian acknowledged by the agency acronym in the legend.

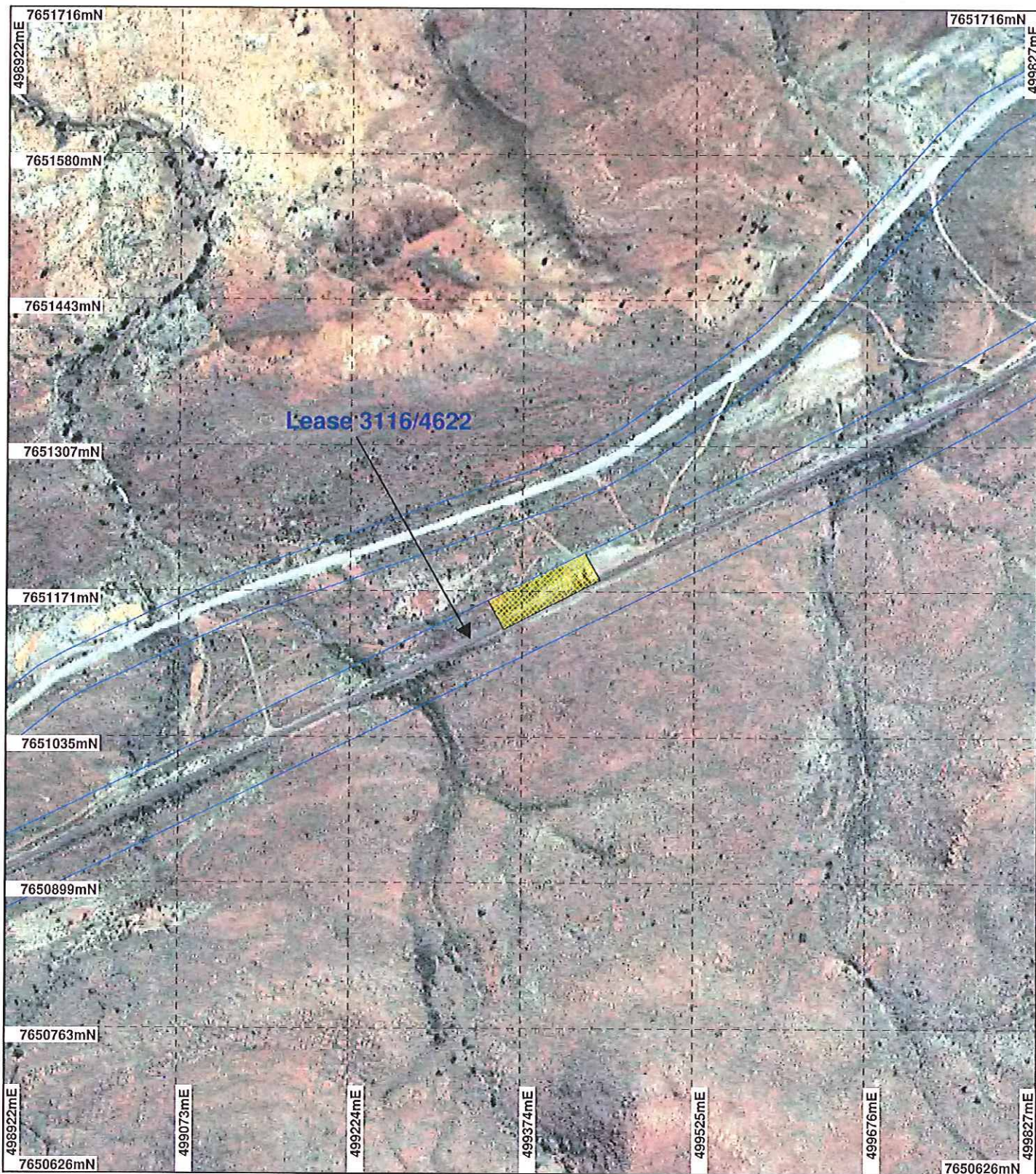


WA Crown Copyright 2002

\* Project Data. This data has not been quality assured. Please contact map author for details.



# PLAN 2869/2D



## LEGEND

- Clearing Instruments**
- Areas Approved to Clear
  - Cadastre
- Pindri Hills 1.4m  
Orthomosaic - Landgate 2000



Scale 1:5000  
(Approximate when reproduced at A4)

Geocentric Datum Australia 1994

Note: the data in this map have not been projected. This may result in geometric distortion or measurement inaccuracies.

*[Signature]* Date 29/1/2

**KIM ANDERSON**  
Officer with delegated authority under Section 20 of the Environmental Protection Act 1986

Information derived from this map should be confirmed with the data custodian acknowledged by the agency acronym in the legend.



WA Crown Copyright 2002