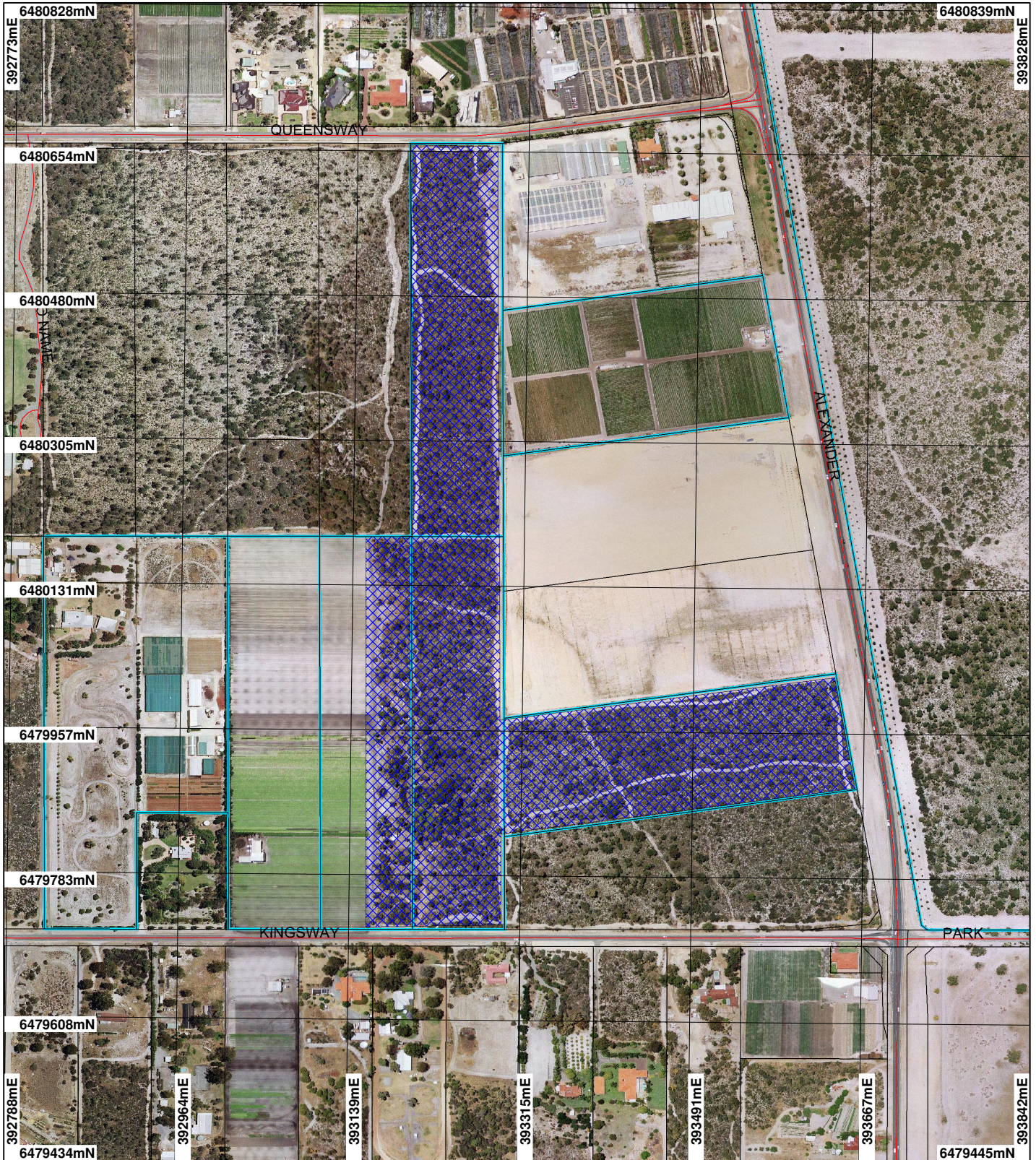


CPS 2923/1 - Map

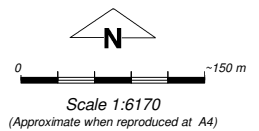


LEGEND

- Land parcels related to instrument
- Clearing Instruments**
- Areas Applied to Clear
- Areas Subject to Conditions
- Areas Approved to Clear
- Road Centrelines

- Cadastre
- Towns
- CAWSA Part IIA Clearing Control Catchments
- Zone A
- Zone B
- Zone C (cont)

- Zone D
- Swan Coastal Plain Central 20cm Orthomosaic - Landgate 2006
- Swan Coastal Plain South 20cm Orthomosaic - Landgate 2006
- Swan Coastal Plain North 20cm Orthomosaic - Landgate 2006



Geocentric Datum Australia 1994

Note: the data in this map have not been projected. This may result in geometric distortion or measurement inaccuracies.

..... Date

Officer with delegated authority under Section 20 of the Environmental Protection Act 1986

Information derived from this map should be confirmed with the data custodian acknowledged by the agency acronym in the legend.

