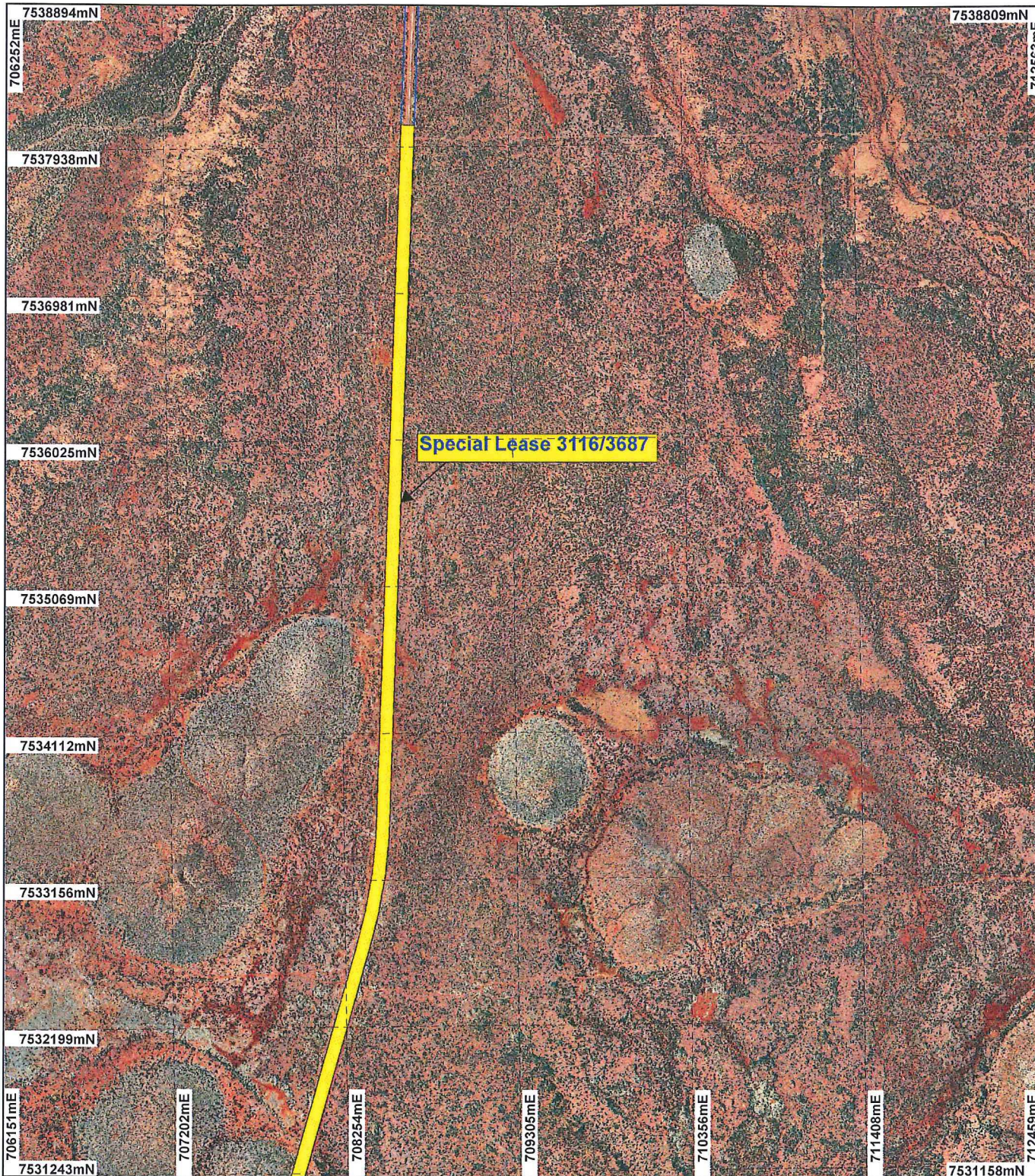
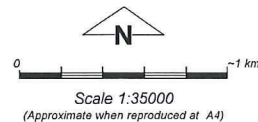


# PLAN 2952/2A



## LEGEND

- Mount Marsh 50cm Orthomosaic - Landgate 2008
- Cadastre Clearing Instruments
- Areas Approved to Clear



Geocentric Datum Australia 1994

Note: the data in this map have not been projected. This may result in geometric distortion or measurement inaccuracies.

..... Date 22/9/14

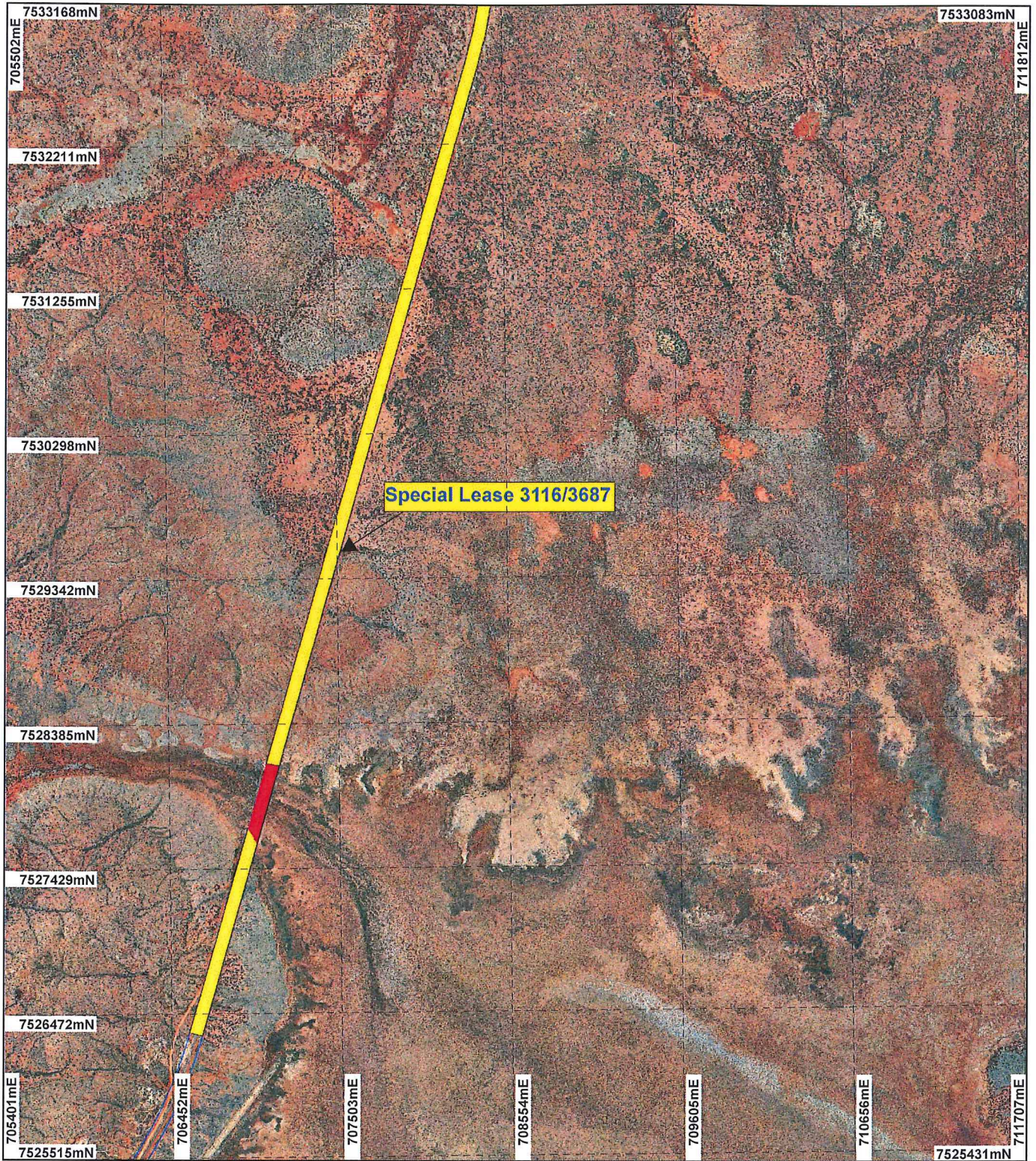
STEVE TANTALA

Officer with delegated authority under Section 20 of the Environmental Protection Act 1986

Information derived from this map should be confirmed with the data custodian acknowledged by the agency acronym in the legend.



# PLAN 2952/2B



## LEGEND

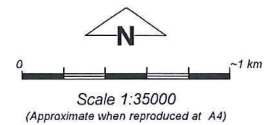
Mount Marsh 50cm  
Orthomosaic - Landgate  
2008

□ Cadastre  
Clearing Instruments

■ Areas Approved to Clear

Clearing Instruments\_1

■ Areas Subject to Conditions



Geocentric Datum Australia 1994

Note: the data in this map have not been projected. This may result in geometric distortion or measurement inaccuracies.

STEVE TANTALA

Officer with delegated authority under Section 20 of the Environmental Protection Act 1986

Information derived from this map should be confirmed with the data custodian acknowledged by the agency acronym in the legend.



WA Crown Copyright 2002