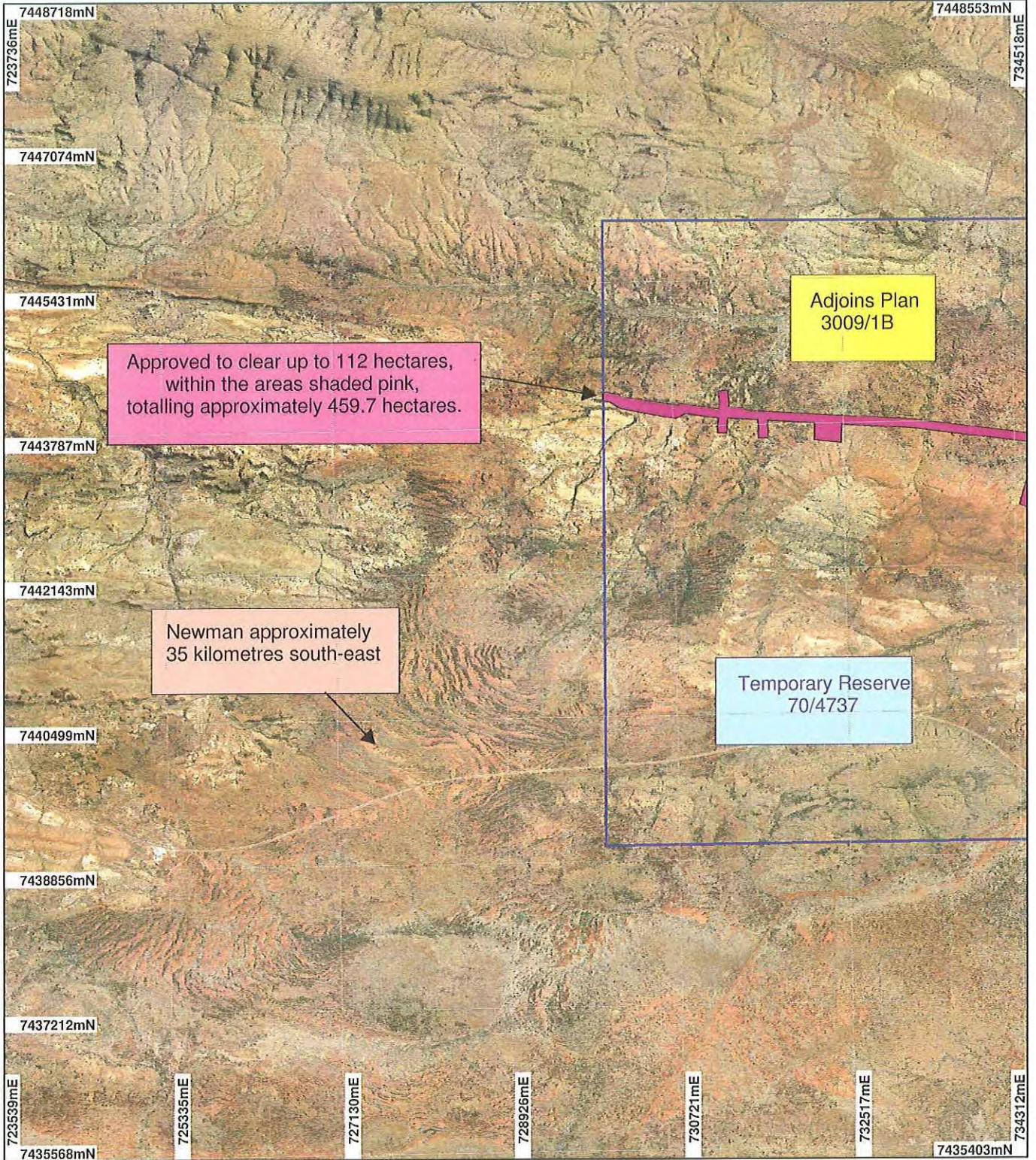
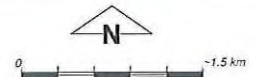


PLAN 3009/1A



LEGEND

- Mining Tenements
- Clearing Instruments
- Areas Approved to Clear
- Ophthalmia 50cm
Orthomosaic - Landgate
2004

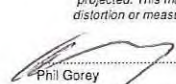


Scale 1:60000

(Approximate when reproduced at A4)

Geocentric Datum Australia 1994

Note: the data in this map have not been projected. This may result in geometric distortion or measurement inaccuracies.

 Date 2/5/09

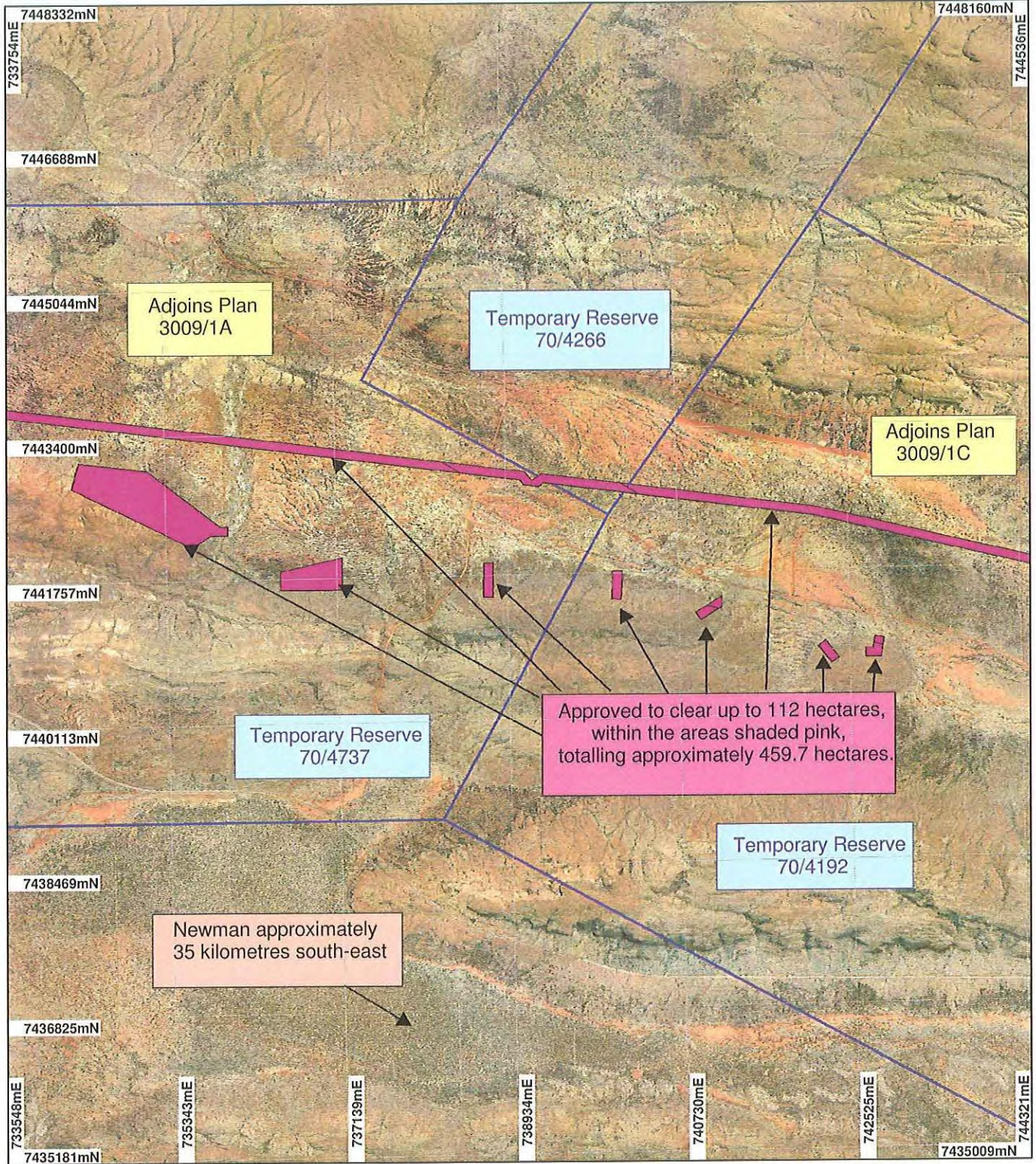
Officer with delegated authority under Section 20 of the Environmental Protection Act 1986

Information derived from this map should be confirmed with the data custodian acknowledged by the agency acronym in the legend.



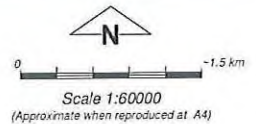
WA Crown Copyright 2002

PLAN 3009/1B



LEGEND

- Mining Tenements
- Clearing Instruments
- Areas Approved to Clear
- Ophthalmia 50cm Orthomosaic - Landgate 2004



Geocentric Datum Australia 1994

Note: the data in this map have not been projected. This may result in geometric distortion or measurement inaccuracies.

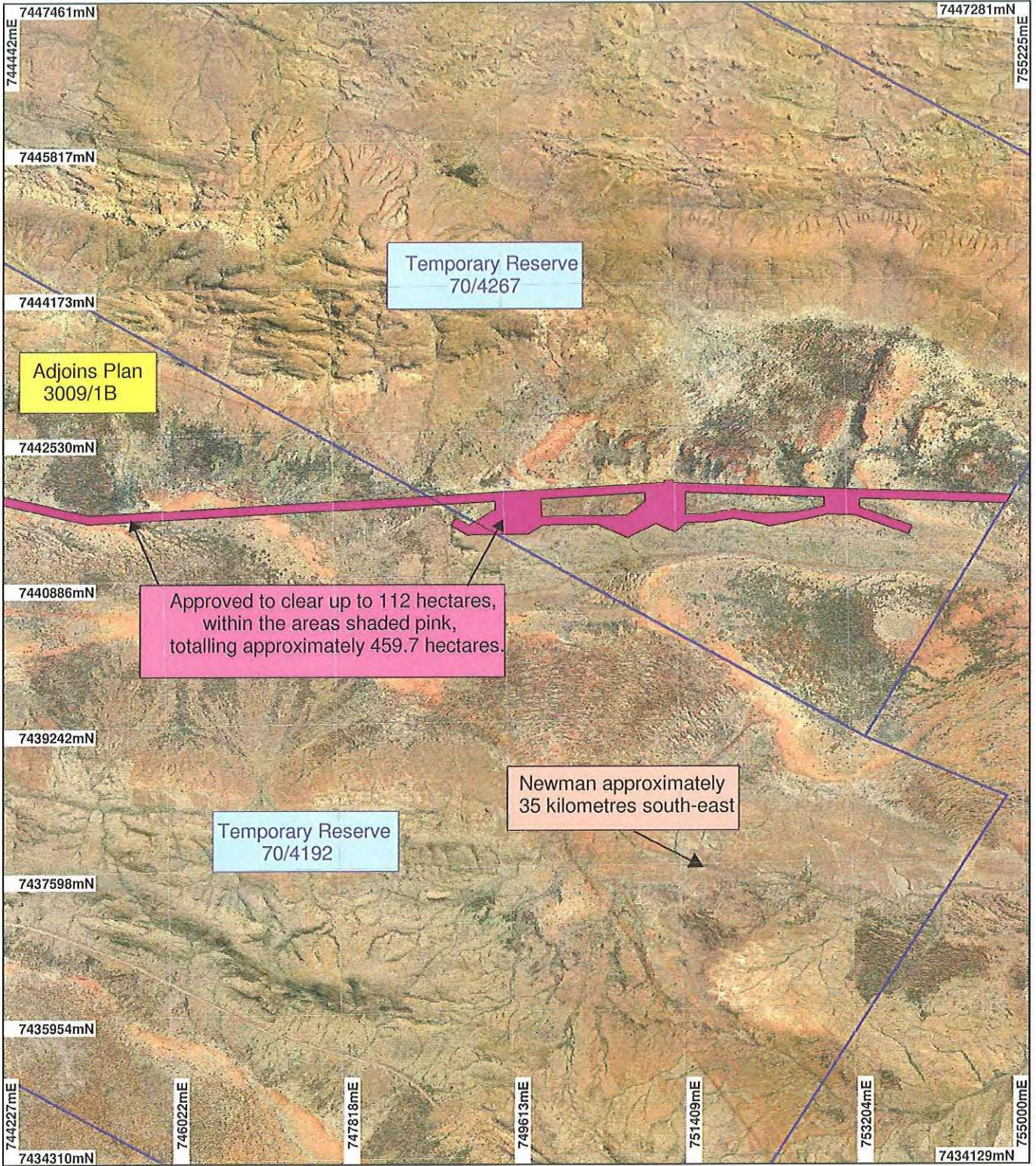
..... Date 2/1/12
 Phil Gorey

Officer with delegated authority under Section 20 of the Environmental Protection Act 1986

Information derived from this map should be confirmed with the data custodian acknowledged by the agency acronym in the legend.

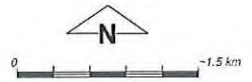


PLAN 3009/1C



LEGEND

- Mining Tenements
 - Clearing Instruments
 - Areas Approved to Clear
- Ophthalmia 50cm
Orthomosaic - Landgate
2004



Geocentric Datum Australia 1994

Note: the data in this map have not been projected. This may result in geometric distortion or measurement inaccuracies.

Phil Garey Date 2/5/04

Officer with delegated authority under Section 20 of the Environmental Protection Act 1986

Information derived from this map should be confirmed with the data custodian acknowledged by the agency acronym in the legend.



WA Crown Copyright 2002