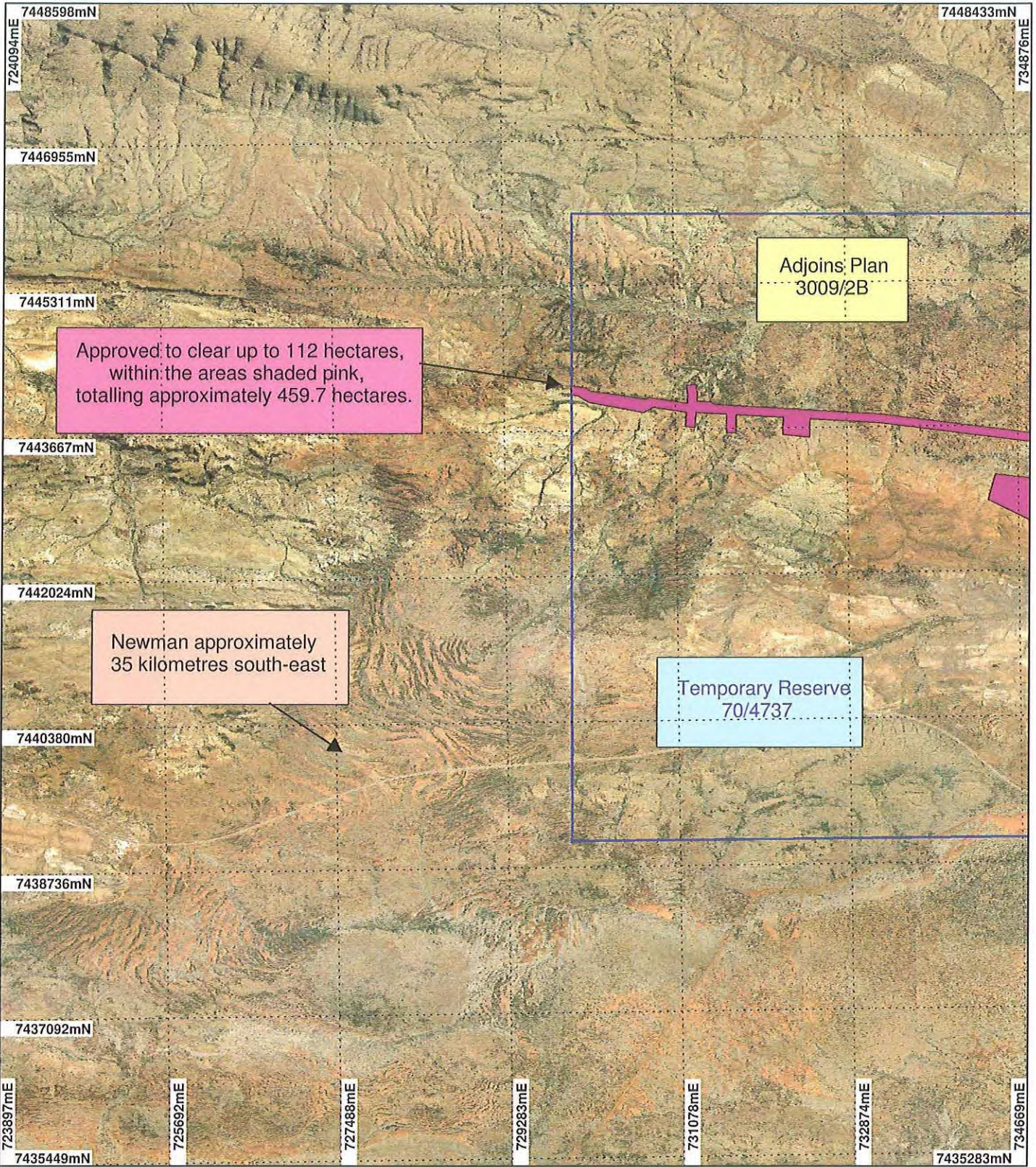


# PLAN 3009/2A



**LEGEND**

- Mining Tenements
- Clearing Instruments
- Areas Approved to Clear

Ophthalmia 50cm  
Orthomosaic - Landgate  
2004



0 ~1.5 km

Scale 1:60000  
(Approximate when reproduced at A4)

Geocentric Datum Australia 1994

*Note: the data in this map have not been projected. This may result in geometric distortion or measurement inaccuracies.*

 Date 1/10/09

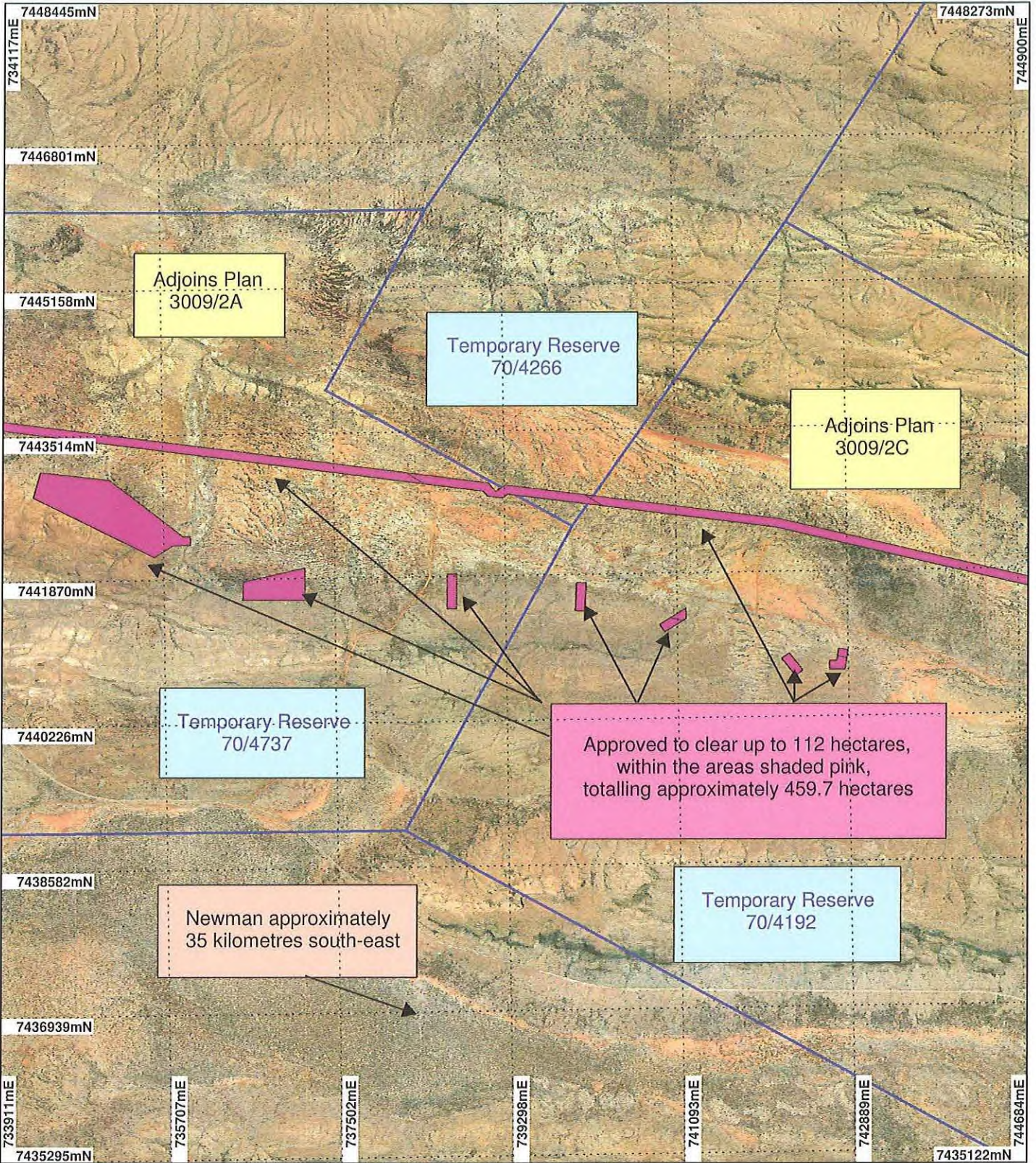
Phil Gorey  
Officer with delegated authority under Section 20 of the Environmental Protection Act 1986

Information derived from this map should be confirmed with the data custodian acknowledged by the agency acronym in the legend.



WA Crown Copyright 2002

# PLAN 3009/2B



## LEGEND

- Mining Tenements
- Clearing Instruments
- Areas Approved to Clear
- Ophthalmia 50cm Orthomosaic - Landgate 2004



0 ————— 1.5 km

Scale 1:60000  
(Approximate when reproduced at A4)

Geocentric Datum Australia 1994

Note: the data in this map have not been projected. This may result in geometric distortion or measurement inaccuracies.

Phil Gorey

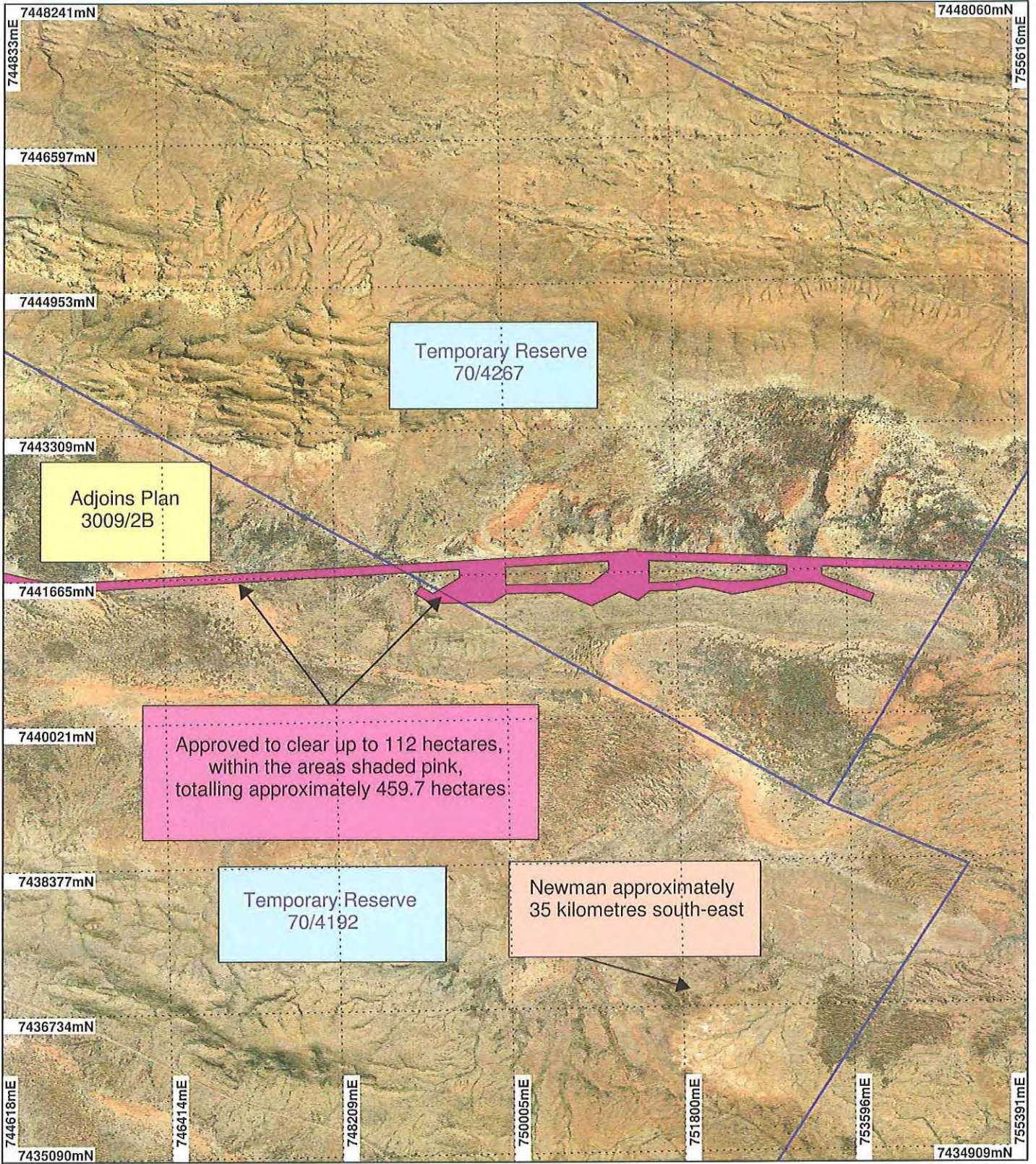
Date 1/10/19

Officer with delegated authority under Section 20 of the Environmental Protection Act 1986

Information derived from this map should be confirmed with the data custodian acknowledged by the agency acronym in the legend.

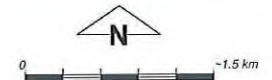


# PLAB 3009/2C



## LEGEND


- ▭ Mining Tenements
- ▭ Clearing Instruments
- ▭ Areas Approved to Clear
- ▭ Ophthalmia 50cm Orthomosaic - Landgate 2004



Scale 1:60000  
(Approximate when reproduced at A4)

Geocentric Datum Australia 1994

Note: the data in this map have not been projected. This may result in geometric distortion or measurement inaccuracies.

 Date 1/10/09  
Phil Gorey

Officer with delegated authority under Section 20 of the Environmental Protection Act 1986

Information derived from this map should be confirmed with the data custodian acknowledged by the agency acronym in the legend.

