

PLAN 3033/1A



LEGEND

- Land parcels related to instrument
- Clearing Instruments**
- Areas Approved to Clear
- Badgingarra 50cm Orthomosaic - Landgate

Hill River 50cm Orthomosaic - Landgate 2006



0 ————— 2 km

Scale 1:75000

(Approximate when reproduced at A4)

Geocentric Datum Australia 1994

Note: the data in this map have not been projected. This may result in geometric distortion or measurement inaccuracies.

Date 2/9/19

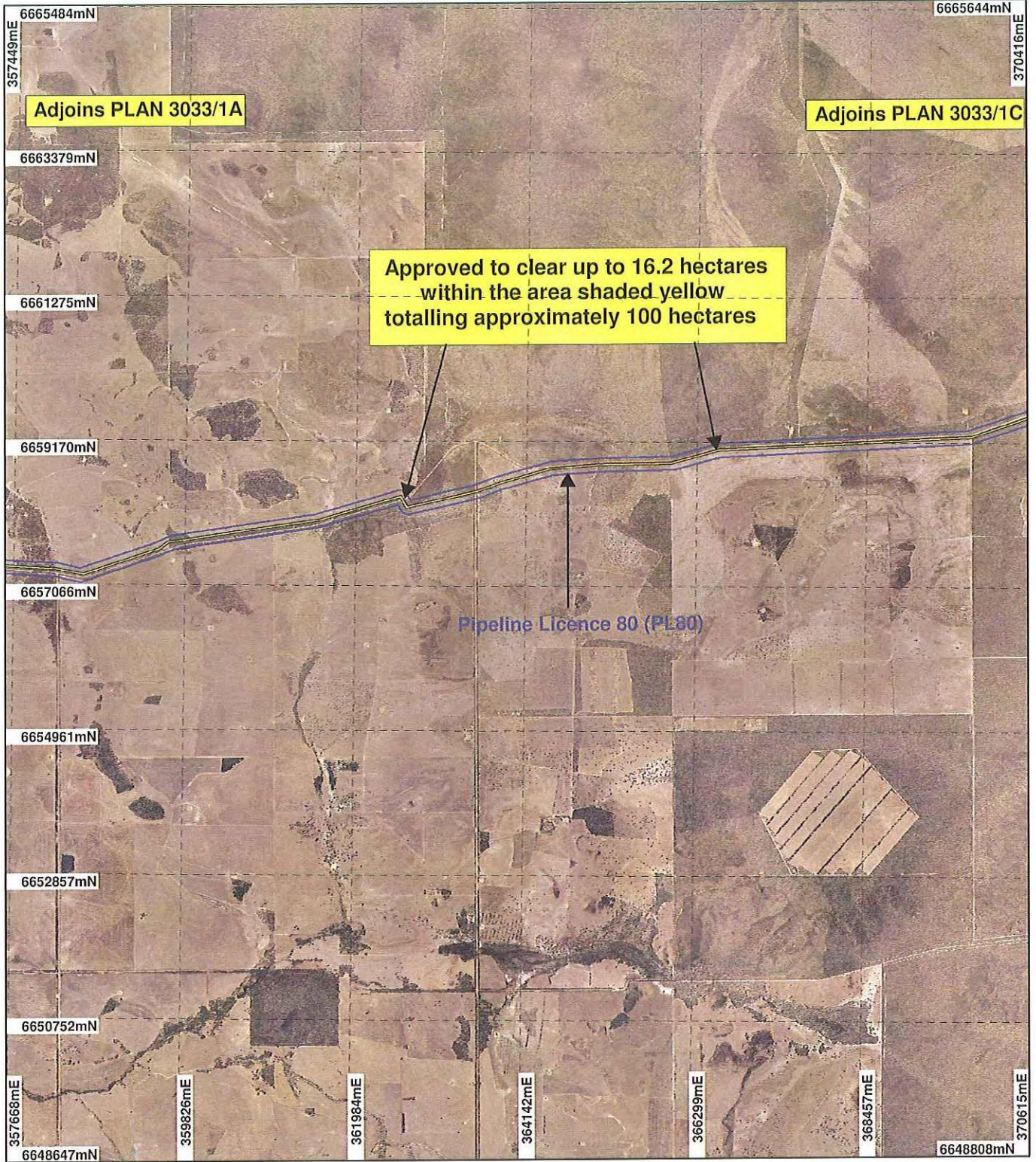
Officer with delegated authority under Section 20 of the Environmental Protection Act 1986

Information derived from this map should be confirmed with the data custodian acknowledged by the agency acronym in the legend.



WA Crown Copyright 2002

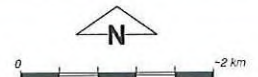
PLAN 3033/1B



LEGEND

- Land parcels related to Instrument
 - Clearing Instruments**
 - Areas Approved to Clear
- Badgingarra 50cm Orthomosaic - Landgate

Hill River 50cm Orthomosaic - Landgate 2006



Scale 1:75000
(Approximate when reproduced at A4)

Geocentric Datum Australia 1994

Note: the data in this map have not been projected. This may result in geometric distortion or measurement inaccuracies.

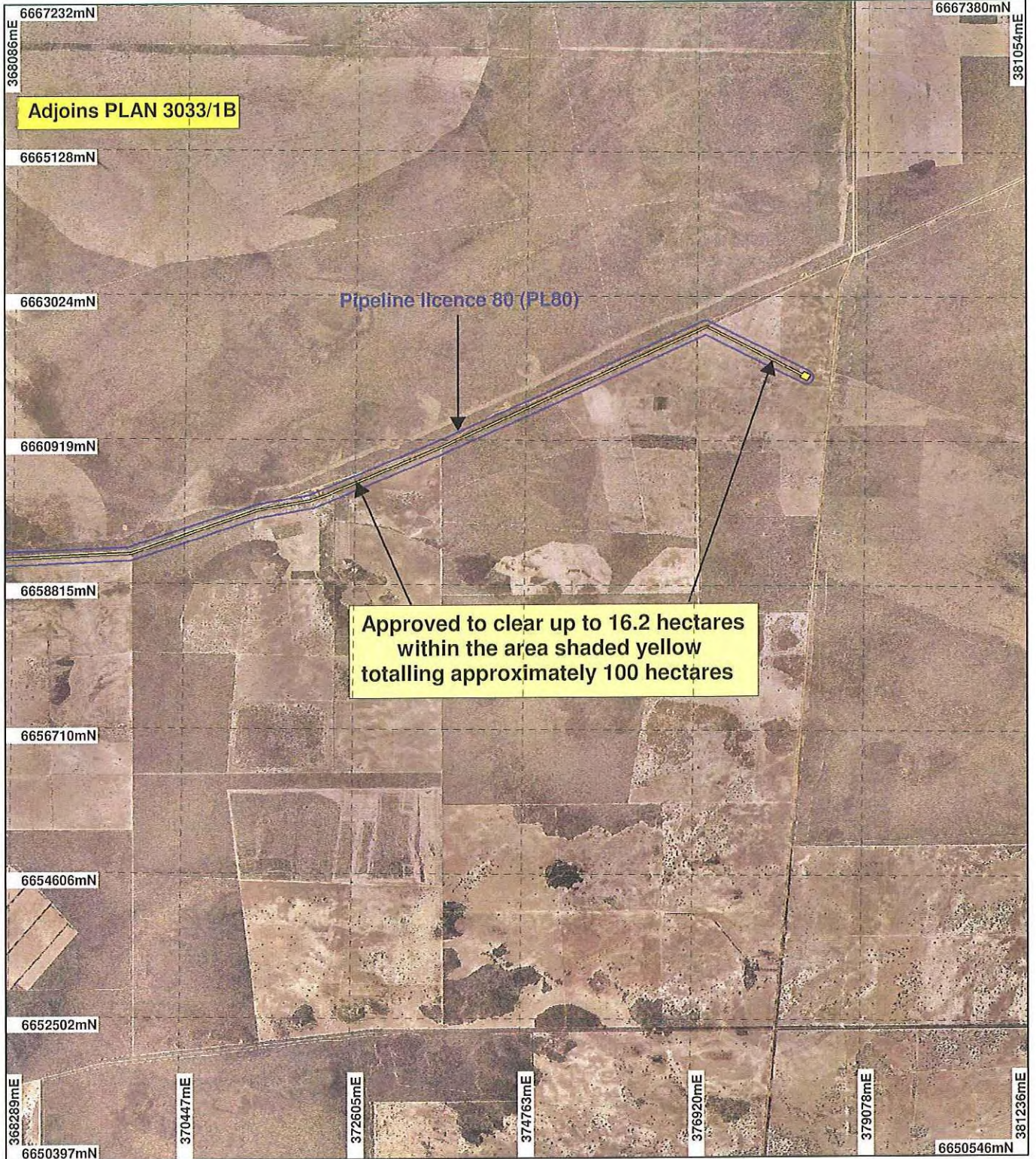
Date 2/3/19

Phil Gorey
Officer with delegated authority under Section 20 of the Environmental Protection Act 1986

Information derived from this map should be confirmed with the data custodian acknowledged by the agency acronym in the legend.



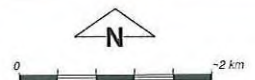
PLAN 3033/1C



LEGEND

- Land parcels related to instrument
- Clearing Instruments**
- Areas Approved to Clear
- Badgingarra 50cm Orthomosaic - Landgate

Hill River 50cm Orthomosaic - Landgate 2006



Scale 1:75000
(Approximate when reproduced at A4)

Geocentric Datum Australia 1994

Note: the data in this map have not been projected. This may result in geometric distortion or measurement inaccuracies.

Phil Gorey

Date 2/2/19

Officer with delegated authority under Section 20 of the Environmental Protection Act 1986

Information derived from this map should be confirmed with the data custodian acknowledged by the agency acronym in the legend.



WA Crown Copyright 2002