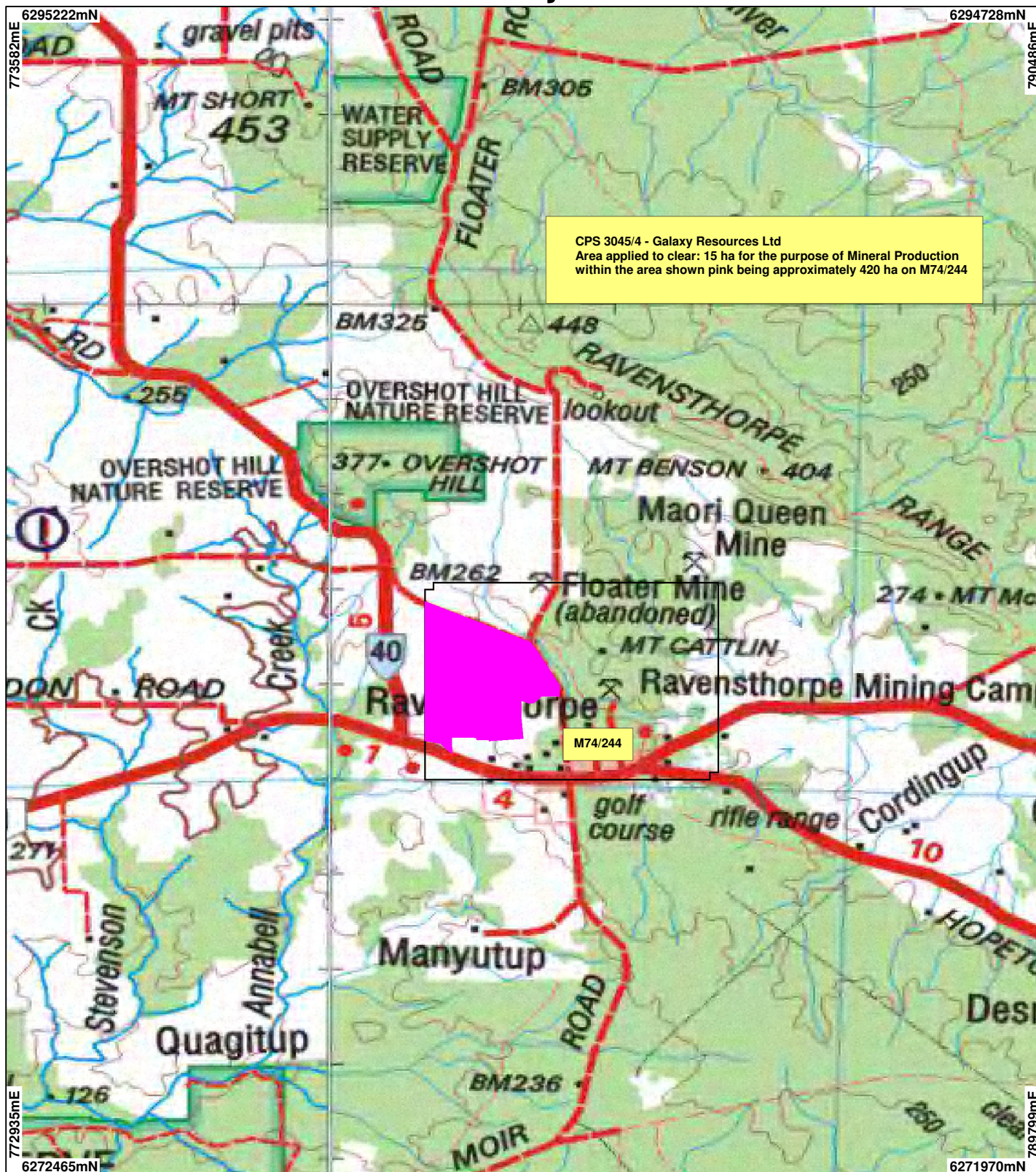





# CPS 3045/4 - Galaxy Resources Ltd



CPS 3045/4 - Galaxy Resources Ltd  
 Area applied to clear: 15 ha for the purpose of Mineral Production  
 within the area shown pink being approximately 420 ha on M74/244

M74/244

## LEGEND

-  Mining Tenements
-  Clearing Instruments
-  NATMAP 250K Series Mapping - GA 08/03



Scale 1:100000  
 (Approximate when reproduced at Letter)

Geocentric Datum Australia 1994

Note: the data in this map have not been projected. This may result in geometric distortion or measurement inaccuracies.

..... Date .....

Officer with delegated authority under Section 20 of the Environmental Protection Act 1986

Information derived from this map should be confirmed with the data custodian acknowledged by the agency acronym in the legend.



WESTERN AUSTRALIA  
 WA Crown Copyright 2002

\* Project Data. This data has not been quality assured. Please contact map author for details.