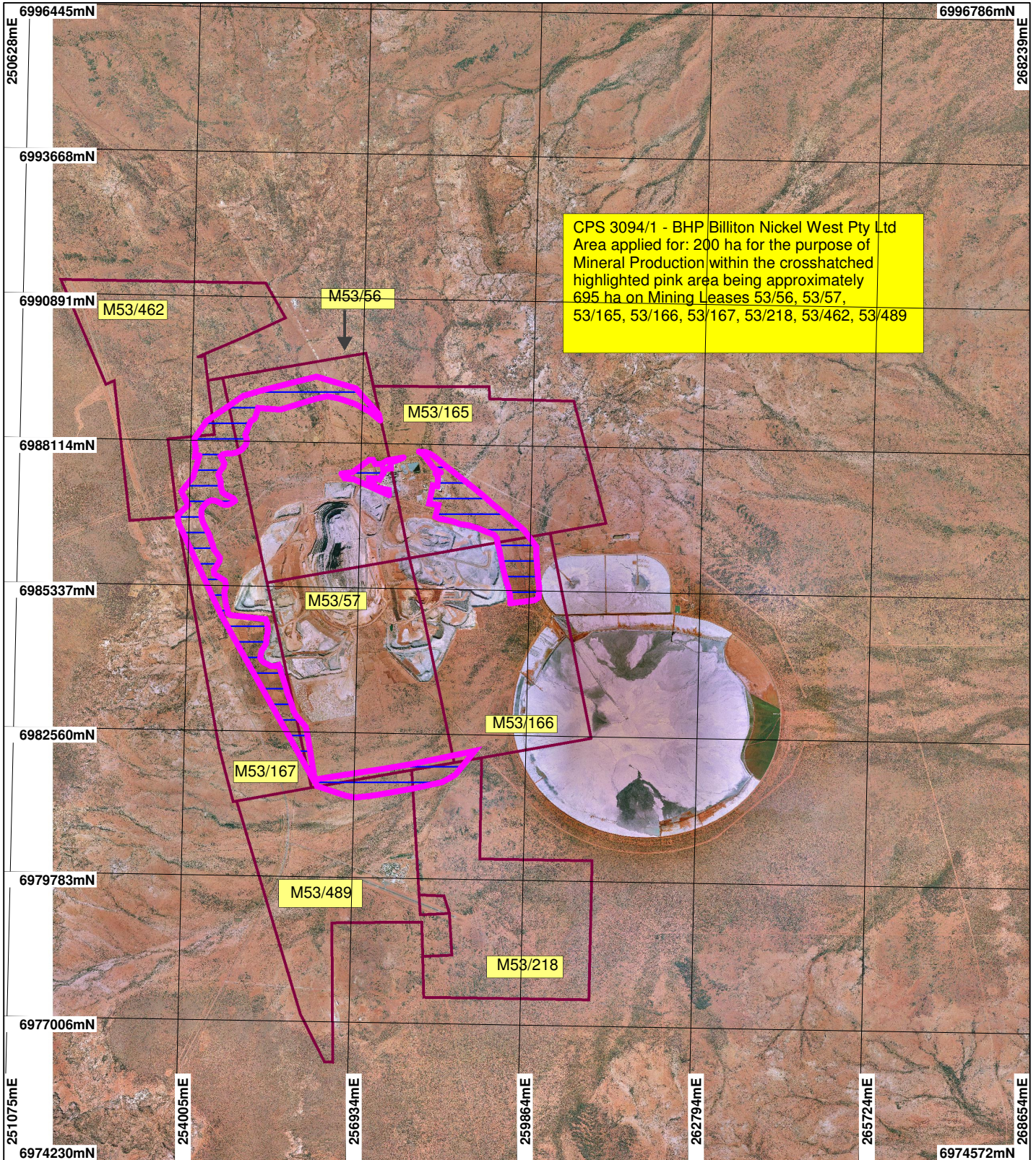


CPS 3094/1 - BHP Billiton Nickel West Pty Ltd



CPS 3094/1 - BHP Billiton Nickel West Pty Ltd
 Area applied for: 200 ha for the purpose of
 Mineral Production within the crosshatched
 highlighted pink area being approximately
 695 ha on Mining Leases 53/56, 53/57,
 53/165, 53/166, 53/167, 53/218, 53/462, 53/489

LEGEND

- Mining Tenements
- Clearing Instruments
- Areas Applied to Clear
- Mount Keith 50cm
Orthomosaic - Landgate
2005



Scale 1:100000

(Approximate when reproduced at A4)

Geocentric Datum Australia 1994

Note: the data in this map have not been projected. This may result in geometric distortion or measurement inaccuracies.

..... Date

Officer with delegated authority under Section 20 of the Environmental Protection Act 1986

Information derived from this map should be confirmed with the data custodian acknowledged by the agency acronym in the legend.



WA Crown Copyright 2002

* Project Data. This data has not been quality assured. Please contact map author for details.