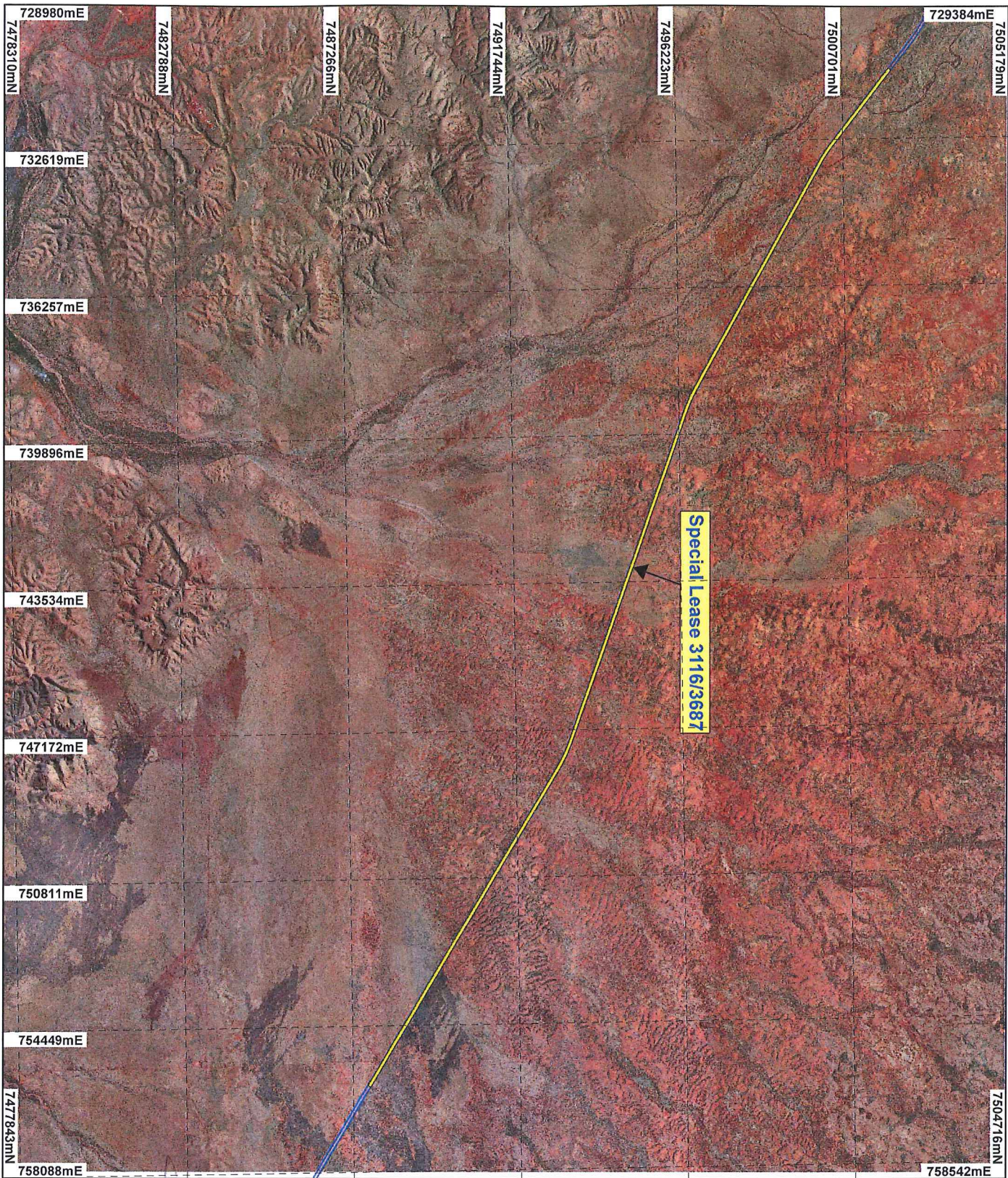


PLAN 3164/2A



Special Lease 3116/3687

LEGEND

- Cadastre
- Clearing Instruments
- Areas Approved to Clear
- West/ Wool/ Storm Orthomosaic - Landgate 2004



0 3.75 km

Scale 1:135000

(Approximate when reproduced at A4)

Geocentric Datum Australia 1994

Note: the data in this map have not been projected. This may result in geometric distortion or measurement inaccuracies.

STEVE TANTALA

Officer with delegated authority under Section 20 of the Environmental Protection Act 1986

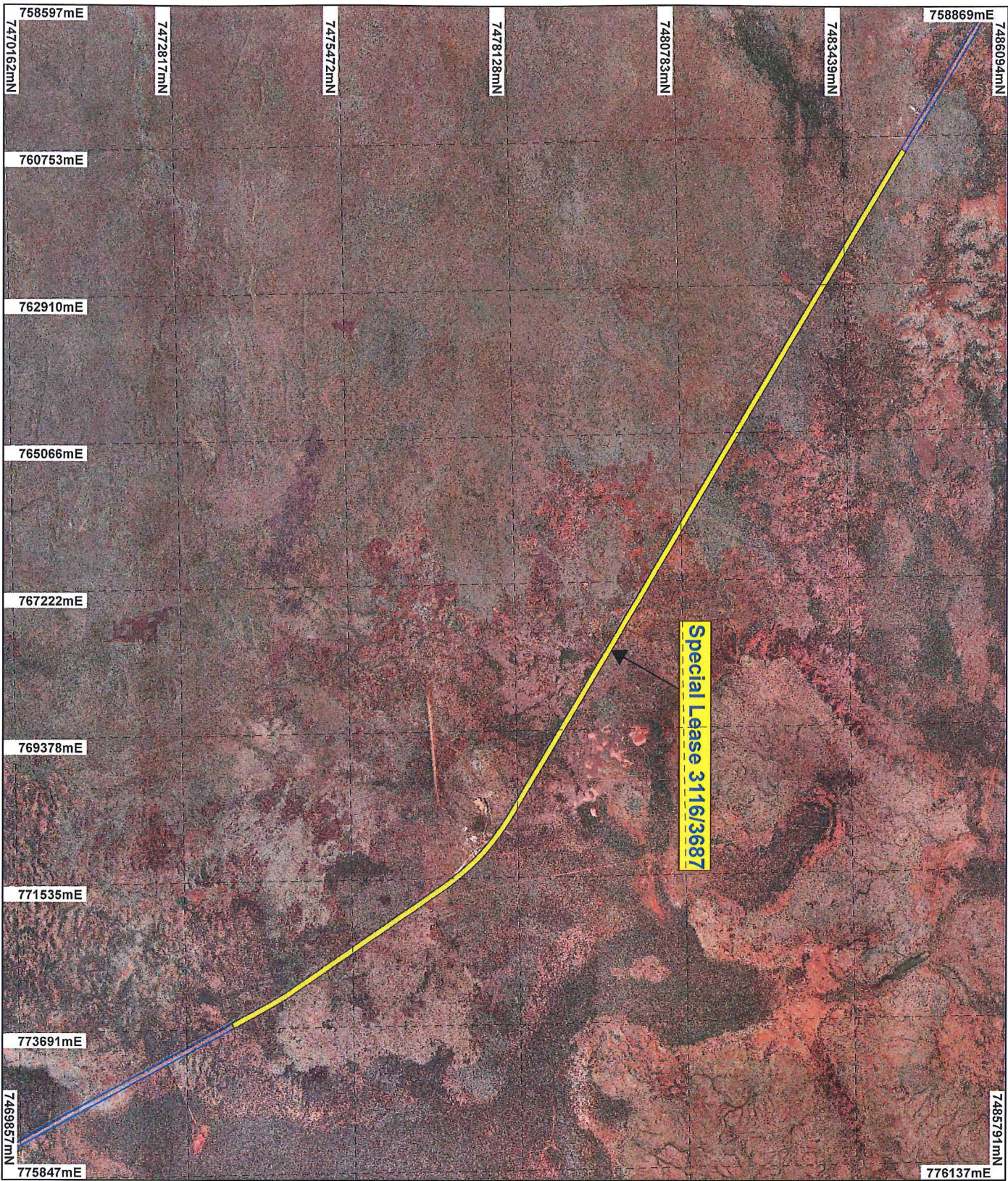
Information derived from this map should be confirmed with the data custodian acknowledged by the agency acronym in the legend.

Date: 23/8/14



WA Govn Copyright 2022

PLAN 3164/2B



Special Lease 3116/3687

LEGEND

- Cadastre
- Clearing Instruments
- Area Approved to Clear
- Roy Hill 50cm Orthomosaic - Landgate 2004



0 2 km

Scale 1:80000
(Approximate when reproduced at A4)

Geocentric Datum Australia 1994

Note: the data in this map have not been projected. This may result in geometric distortion or measurement inaccuracies.

STEVE YANTJALA Date: 23/3/22

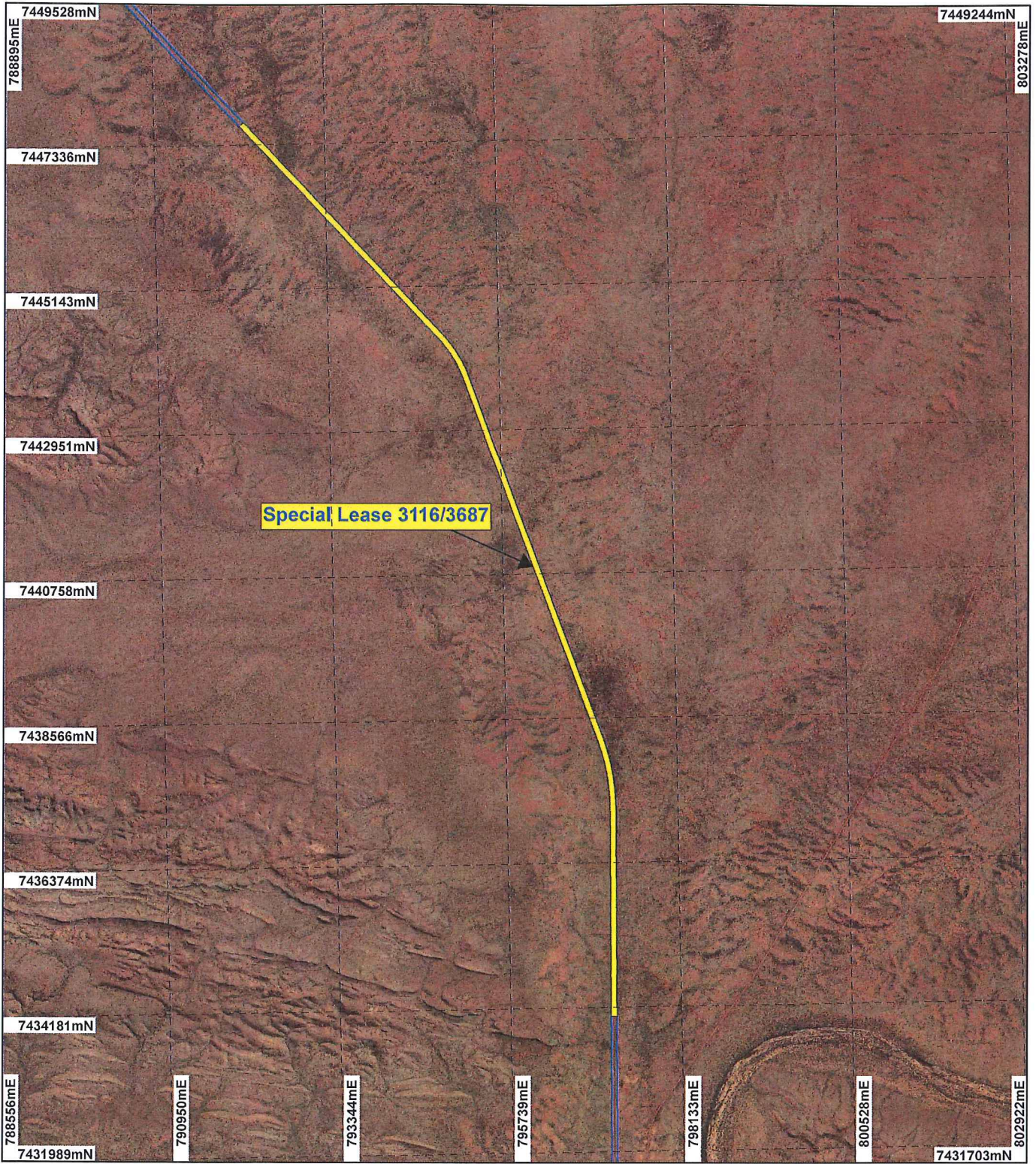
Officer with delegated authority under Section 20 of the Environmental Protection Act 1986

Information derived from this map should be confirmed with the data custodian acknowledged by the agency acronym in the legend.



WA Govt. Copyright 2022

PLAN 3164/2C



LEGEND

- Cadastre
 - Clearing Instruments
 - Areas Approved to Clear
- Newman 1.4m Orthomosaic - Landgate 2003



Scale 1:80000

(Approximate when reproduced at A4)

Geocentric Datum Australia 1994

Note: the data in this map have not been projected. This may result in geometric distortion or measurement inaccuracies.

..... Date 23/8/14

STEVE TANTALA

Officer with delegated authority under Section 20 of the Environmental Protection Act 1986

Information derived from this map should be confirmed with the data custodian acknowledged by the agency acronym in the legend.



WA Crown Copyright 2002