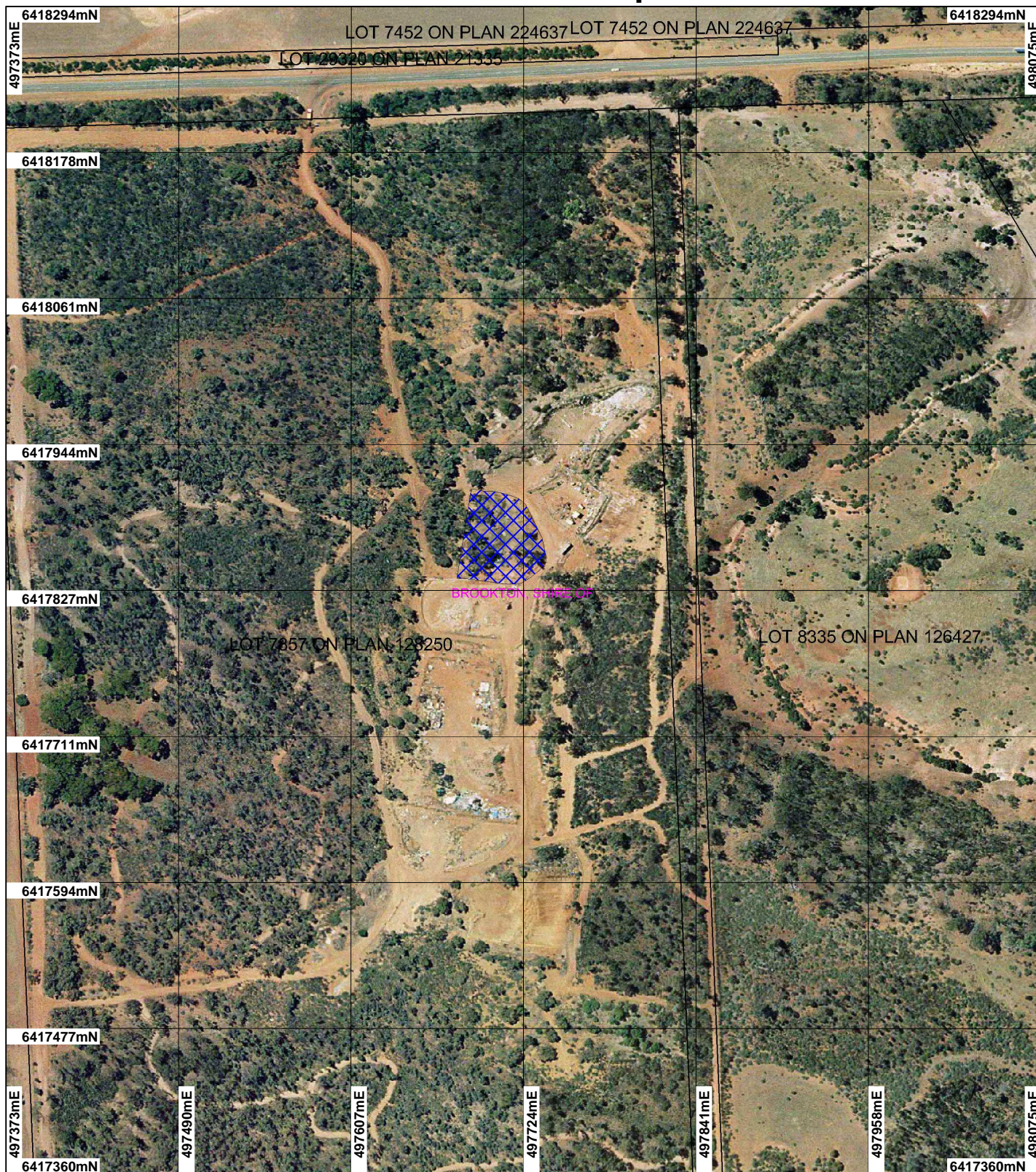


# CPS 3289/1 Map



## LEGEND

### Clearing Instruments

-  Areas Applied to Clear
-  Areas Approved to Clear

-  Cadastre
- Beverley 50cm Orthomosaic - Landgate 2006

-  Local Government Authorities



Scale 1:4126

(Approximate when reproduced at A4)

Geocentric Datum Australia 1994

Note: the data in this map have not been projected. This may result in geometric distortion or measurement inaccuracies.

..... Date .....

Officer with delegated authority under Section 20 of the Environmental Protection Act 1986

Information derived from this map should be confirmed with the data custodian acknowledged by the agency acronym in the legend.



Department of Environment and Conservation

Our environment, our future  
WA Crown Copyright 2002

\* Project Data is denoted by asterisk. This data has not been quality assured. Please contact map author for details.