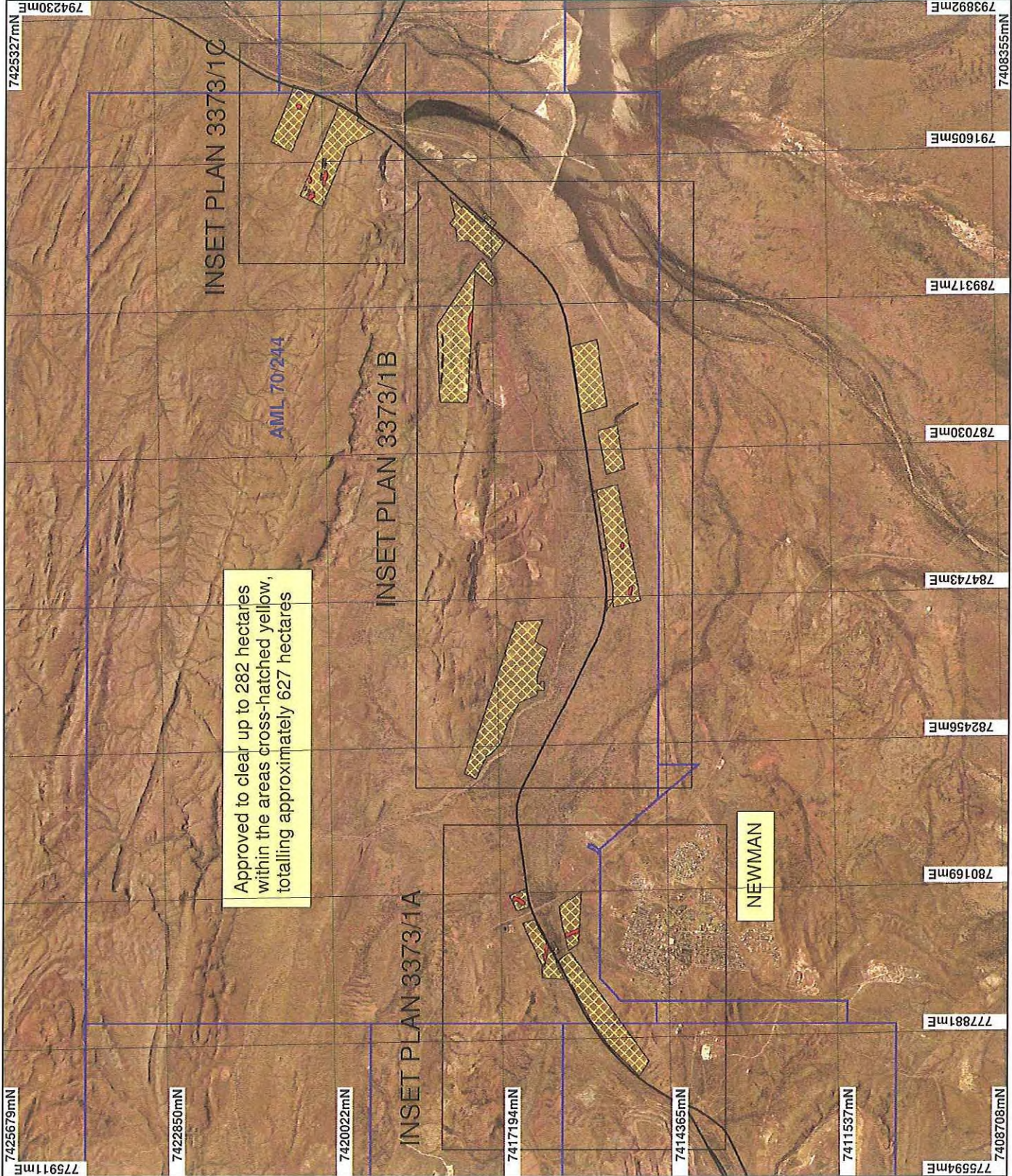


PLAN 3373/1



Approved to clear up to 282 hectares within the areas cross-hatched yellow, totalling approximately 627 hectares

- LEGEND**
- Mining Tenements
 - Clearing Instruments
 - Areas Approved to Clear
 - Clearing Instruments_1
 - Areas Subject to Conditions
 - Railways
 - Mainline

* Project Data. This data has not been quality assured. Please contact map author for details.



Scale 1:85000
(Approximate when reproduced at A4)

Geocentric Datum Australia 1994

Note: the data in this map have not been projected. This may result in geometric distortion or measurement inaccuracies.

Phil Gorye Date 11/6/00

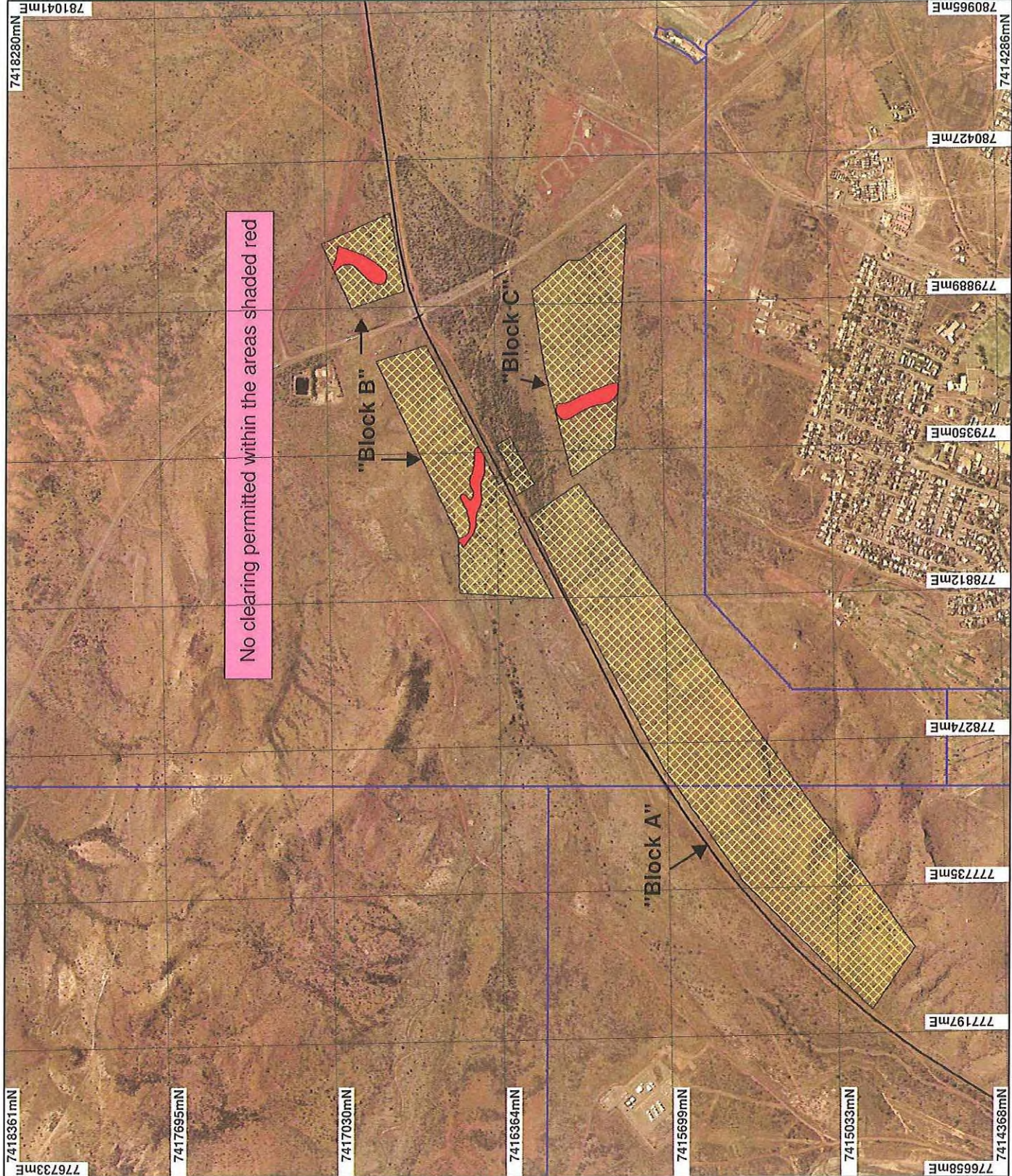
Office with delegated authority under Section 20 of the Environmental Protection Act 1985

Information derived from this map should be confirmed with the data custodian acknowledged by the agency acronym in the legend.



WA Govt Copyright 2002

PLAN 3373/1A



LEGEND

- Mining Elements
- Clearing Instruments
- Areas Approved to Clear
- Clearing Instruments_1
- Areas Subject to Conditions
- Railways
- Mainline

* Project Data. This data has not been quality assured. Please contact map author for details.



Scale 1:20000
(Approximate when reproduced at A4)

Geocentric Datum Australia 1994

Note: the data in this map have not been projected. This may result in geometric distortion or measurement inaccuracies.

Date 1/17/2010

Phil Geary

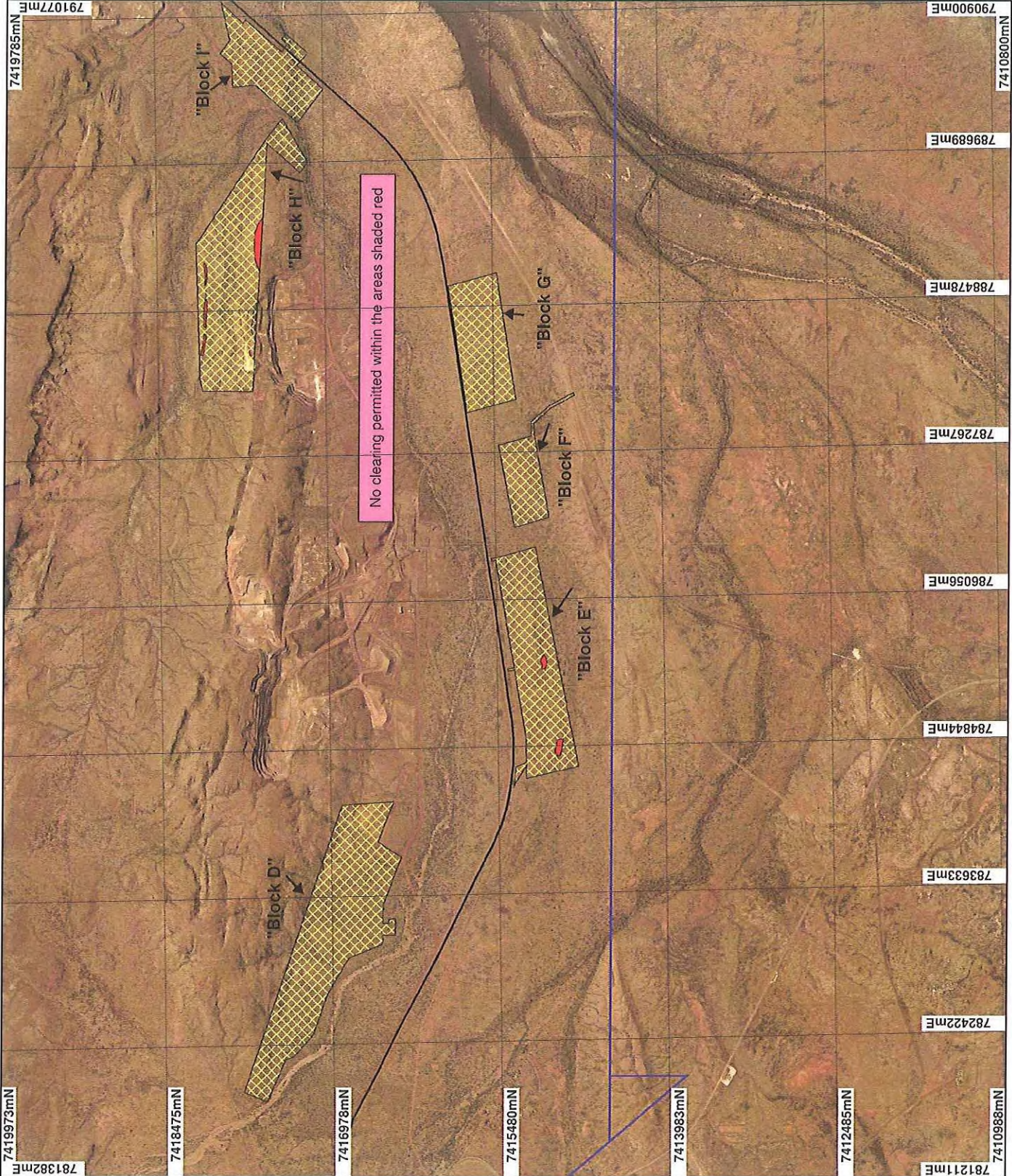
Officer with delegated authority under Section 20 of the Environmental Protection Act 1986

Information derived from this map should be confirmed with the data custodian acknowledged by the agency acronym in the legend.



WA Gov Copyright 2002

PLAN 3373/1B



- LEGEND**
- Mainline
 - Clearing Instruments
 - Areas Approved to Clear
 - Clearing Instruments_1
 - Areas Subject to Conditions
 - Railways

* Project Data. This data has not been quality assured. Please contact map author for details.



0 1.25 km

Scale 1:45000
(Approximate when reproduced at A4)

Geocentric Datum Australia 1984

Note: the data in this map have not been projected. This may result in geometric distortion or measurement inaccuracies.

Phil Gately Date 11/2/2010

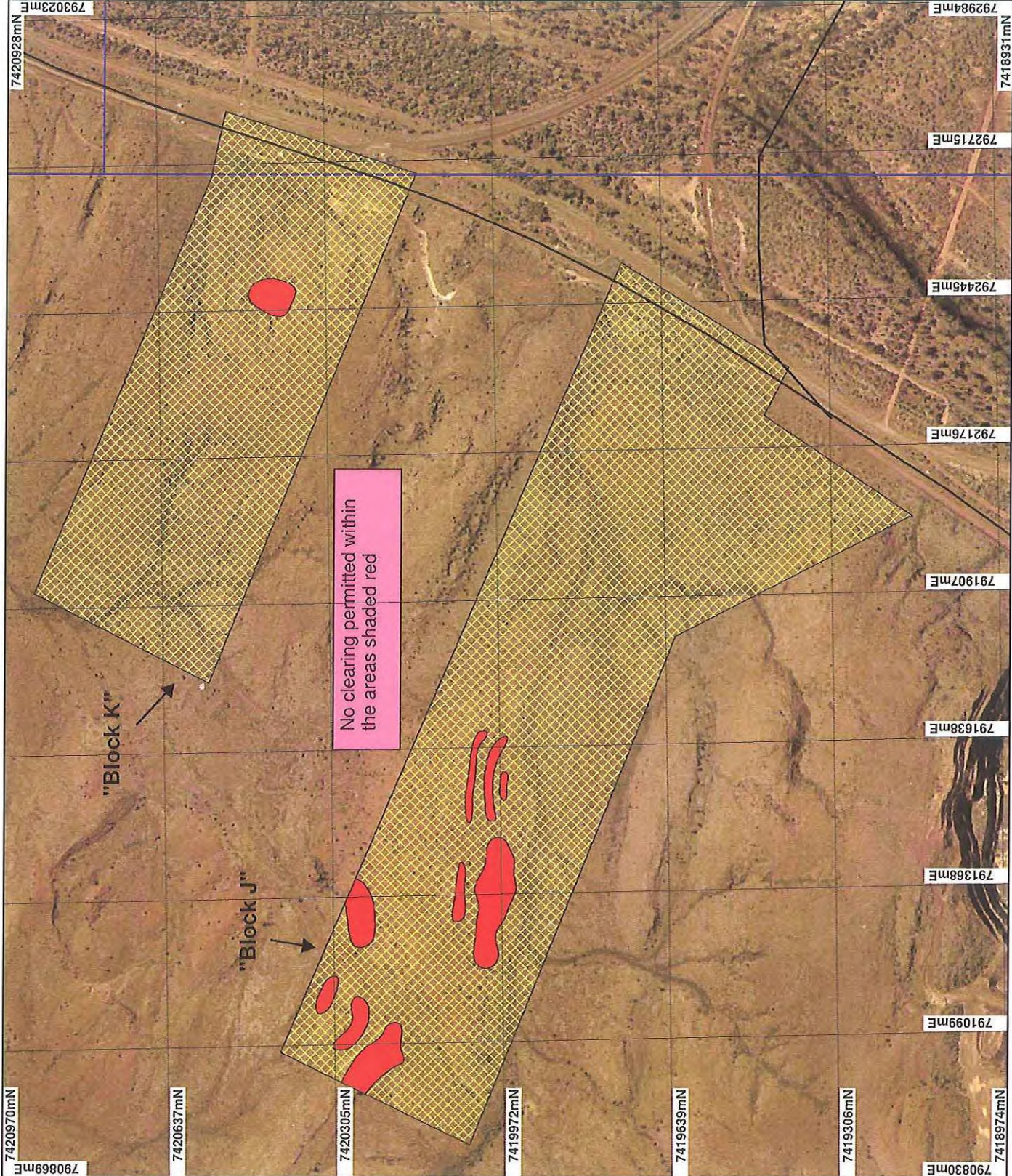
Officer with delegated authority under Section 20 of the Environmental Protection Act 1986

Information derived from this map should be confirmed with the data custodian acknowledged by the agency acronym in the legend.



WA Govt Copyright 2002

PLAN 3373/1C



LEGEND

- Mining Tenements
- Clearing Instruments
- Areas Approved to Clear
- Clearing Instruments_1
- Areas Subject to Conditions
- Railways
- Mainline

* Project Data. This data has not been quality assured. Please contact map author for details.



Scale 1:10000
(Approximate when reproduced at A4)

Geocentric Datum Australia 1994

Note: the data in this map have not been projected. This may result in geometric distortion or measurement inaccuracies.

Date: 11/2/2010
Phil Carey

Officer with delegated authority under Section 20 of the Environmental Protection Act 1986

Information derived from this map should be confirmed with the data custodian acknowledged by the agency acronym in the legend.



WA Crown Copyright 2002