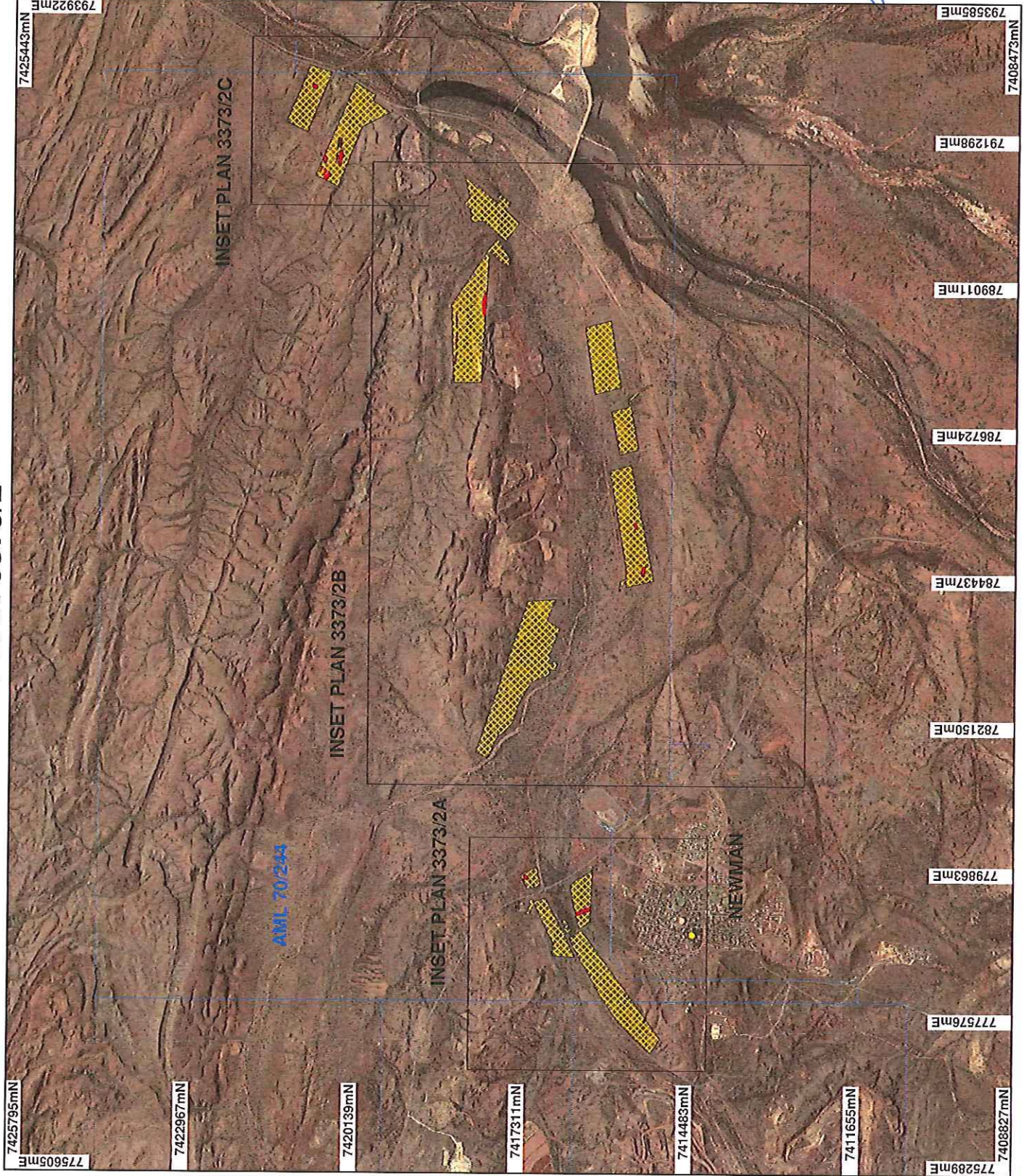


PLAN 3373/2



LEGEND

- Mining Tenements
- Towns
- Clearing Instruments
- Areas Approved to Clear
- Clearing Instruments_1
- Areas Subject to Conditions
- Newman 1.4m Orthomosaic - Landgate 2003

* Project Data. This data has not been quality assured. Please contact map author for details.



0 2.5 km

Scale 1:85000
(Approximate when reproduced at A4)

Geocentric Datum Australia 1994

Note: the data in this map have not been projected. This may result in geometric distortion or measurement inaccuracies.

Date 20/10/2011

PHIL GOREY

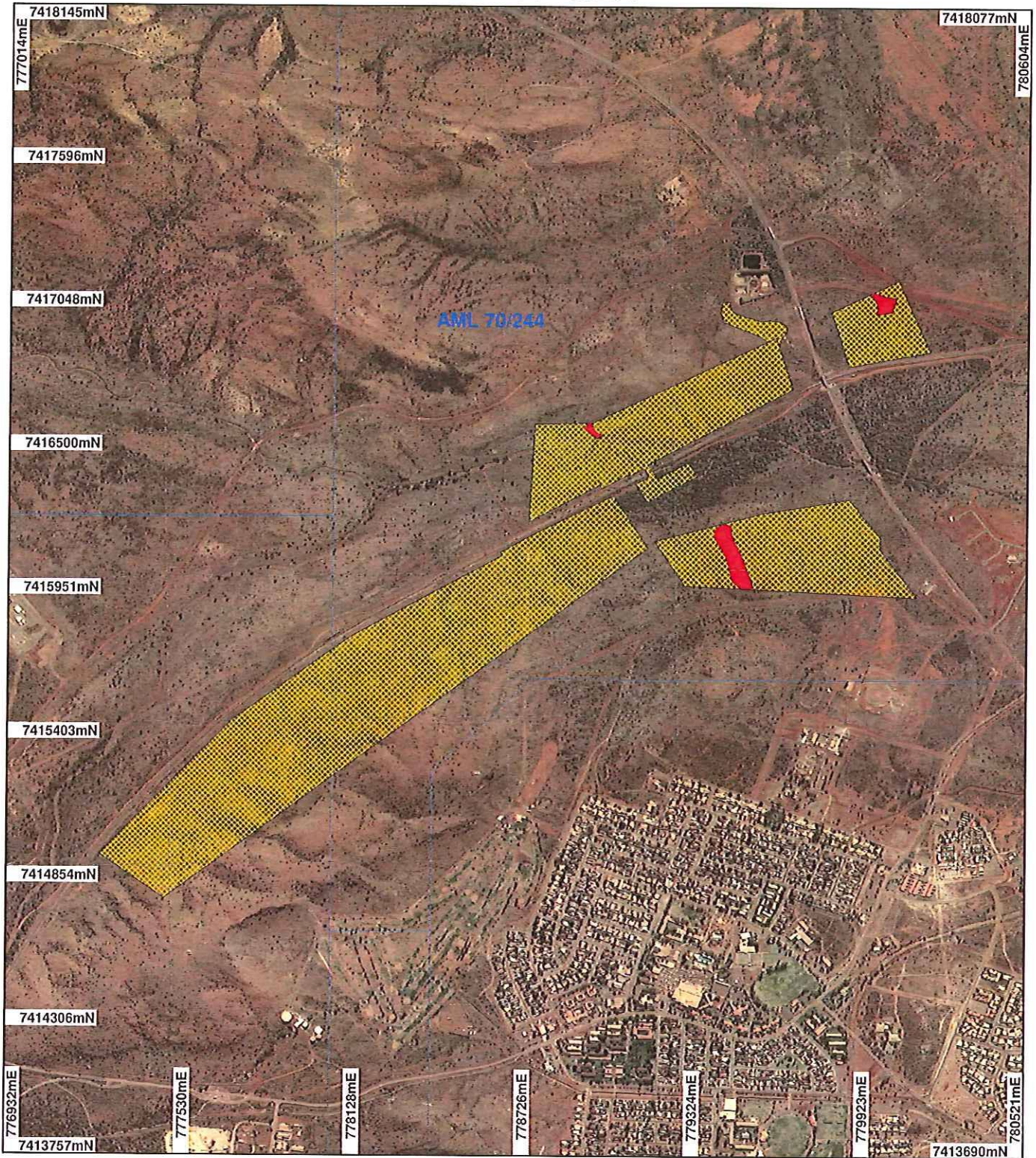
Officer with delegated authority under Section 20 of the Environmental Protection Act 1986

Information derived from this map should be confirmed with the data custodian acknowledged by the agency acronym in the legend.



WA Crown Copyright 2002

PLAN 3373/2A



LEGEND

-  Mining Tenements
-  Clearing Instruments
-  Areas Approved to Clear
-  Clearing Instruments_1
-  Areas Subject to Conditions

Newman 1,4m Orthomosaic -
Landgate 2003



0 500 m

Scale 1:20000

(Approximate when reproduced at A4)

Geocentric Datum Australia 1994

Note: the data in this map have not been projected. This may result in geometric distortion or measurement inaccuracies.

 Date 20/10/2011

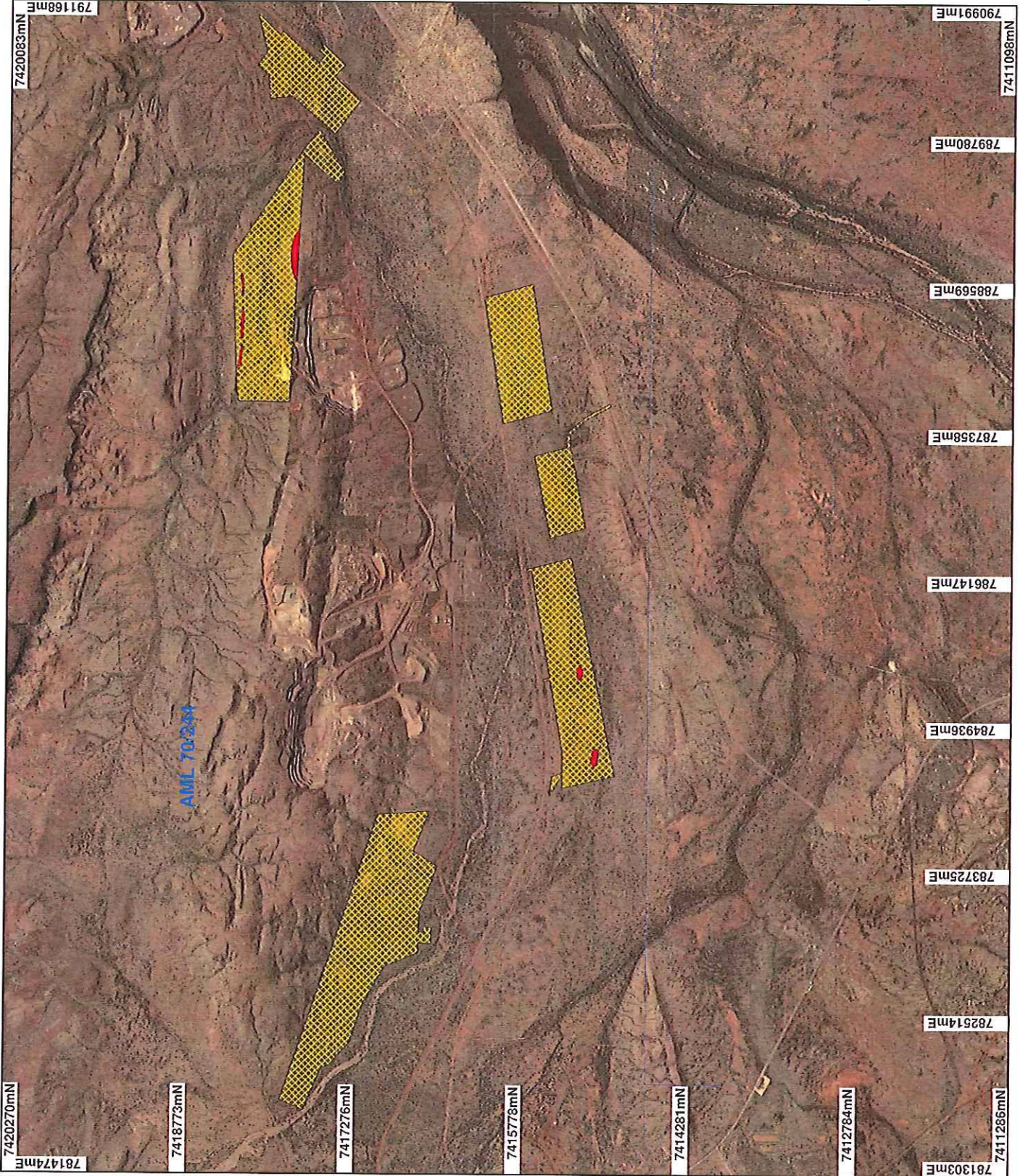
PHIL GOREY
Officer with delegated authority under Section 20 of
the Environmental Protection Act 1986

Information derived from this map should be confirmed with the data custodian acknowledged by the agency acronym in the legend.



WA Crown Copyright 2002

PLAN 3373/2B



LEGEND

- Mining Tenements
- Clearing Instruments
- Areas Approved to Clear
- Clearing Instruments_1
- Areas Subject to Conditions
- Newman 1.4m Orthomosaic - Landgate 2003

* Project Data. This data has not been quality assured. Please contact map author for details.



Scale 1:45000
(Approximate when reproduced at A4)

Geocentric Datum Australia 1994

Note: the data in this map have not been projected. This may result in geometric distortion or measurement inaccuracies.

PHIL GOREY Date 20/06/04

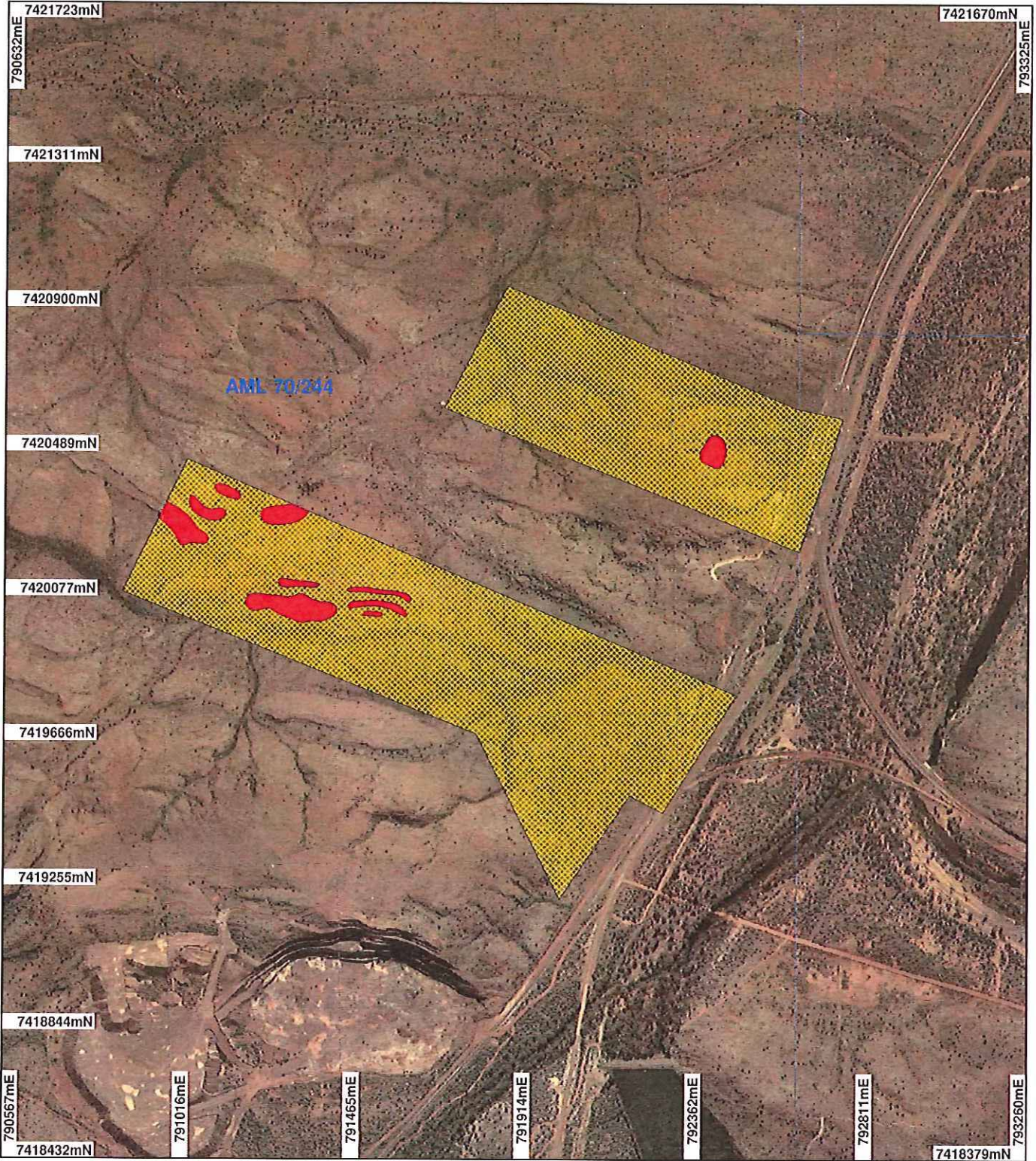
Officer with delegated authority under Section 20 of the Environmental Protection Act 1986

Information derived from this map should be confirmed with the data custodian acknowledged by the agency acronym in the legend.



WA Crown Copyright 2002

PLAN 3373/2C



LEGEND

-  Mining Tenements Clearing Instruments
-  Areas Approved to Clear Clearing Instruments_1
-  Areas Subject to Conditions

Newman 1,4m Orthomosaic - Landgate 2003



0 ~375 m

Scale 1:15000

(Approximate when reproduced at A4)

Geocentric Datum Australia 1994

Note: the data in this map have not been projected. This may result in geometric distortion or measurement inaccuracies.

 Date 20/10/2011

PHIL GOREY
Officer with delegated authority under Section 20 of the Environmental Protection Act 1986

Information derived from this map should be confirmed with the data custodian acknowledged by the agency acronym in the legend.



WA Crown Copyright 2002