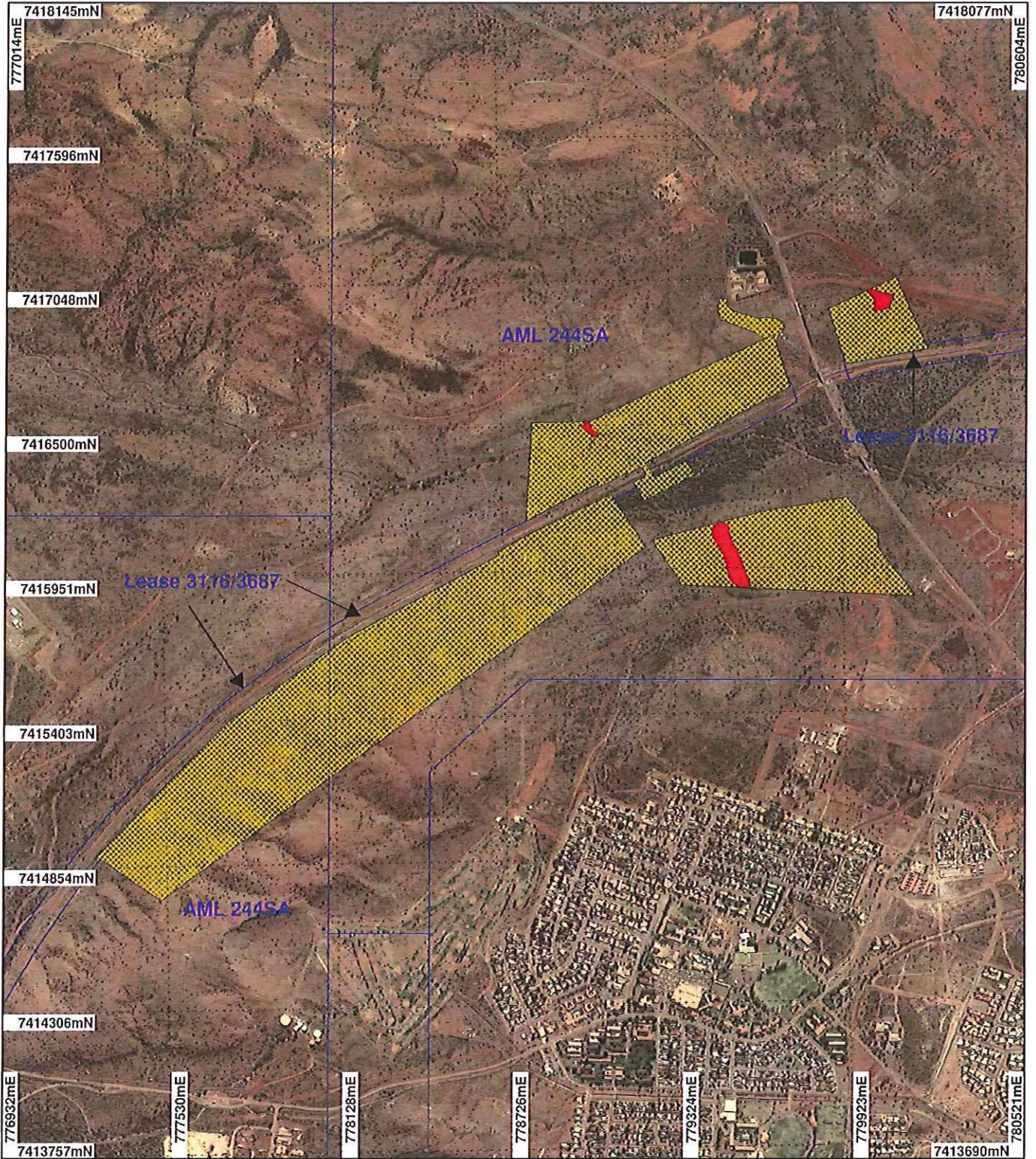


# PLAN 3373/3A

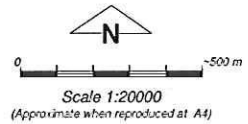


## LEGEND

- Cadastre
- Mining Tenements
- Clearing Instruments
- Areas Approved to Clear

### Clearing Instruments\_1

- Areas Subject to Conditions
- Newman 1:4m Orthomosaic - Landgate 2003**



Note: the data in this map have not been projected. This may result in geometric distortion or measurement inaccuracies.

*[Signature]* Date 21/9/12

KIM ANDERSON

Officer with delegated authority under Section 20 of the Environmental Protection Act 1986

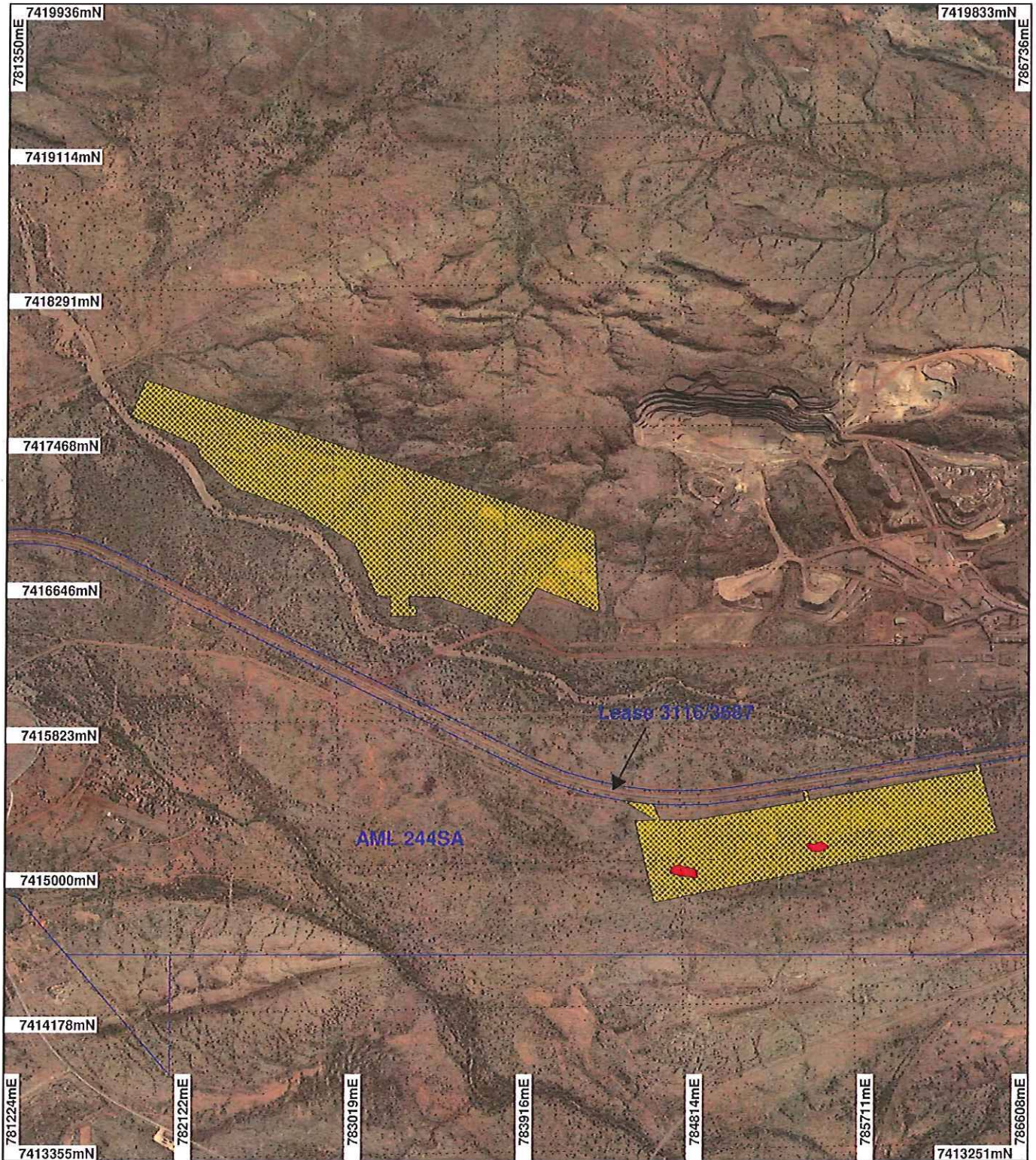
Information derived from this map should be confirmed with the data custodian acknowledged by the agency acronym in the legend.



WA Crown Copyright 2002

\* Project Data. This data has not been quality assured. Please contact map author for details.

# PLAN 3373/3B

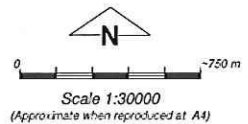


## LEGEND

- Cadastre
- Mining Tenements
- Clearing Instruments
- Areas Approved to Clear

### Clearing Instruments\_1

- Areas Subject to Conditions
- Newman 1,4m Orthomosaic - Landgate 2003



Geocentric Datum Australia 1994

Note: the data in this map have not been projected. This may result in geometric distortion or measurement inaccuracies.

*K. Anderson* Date: 27/9/12  
KIM ANDERSON

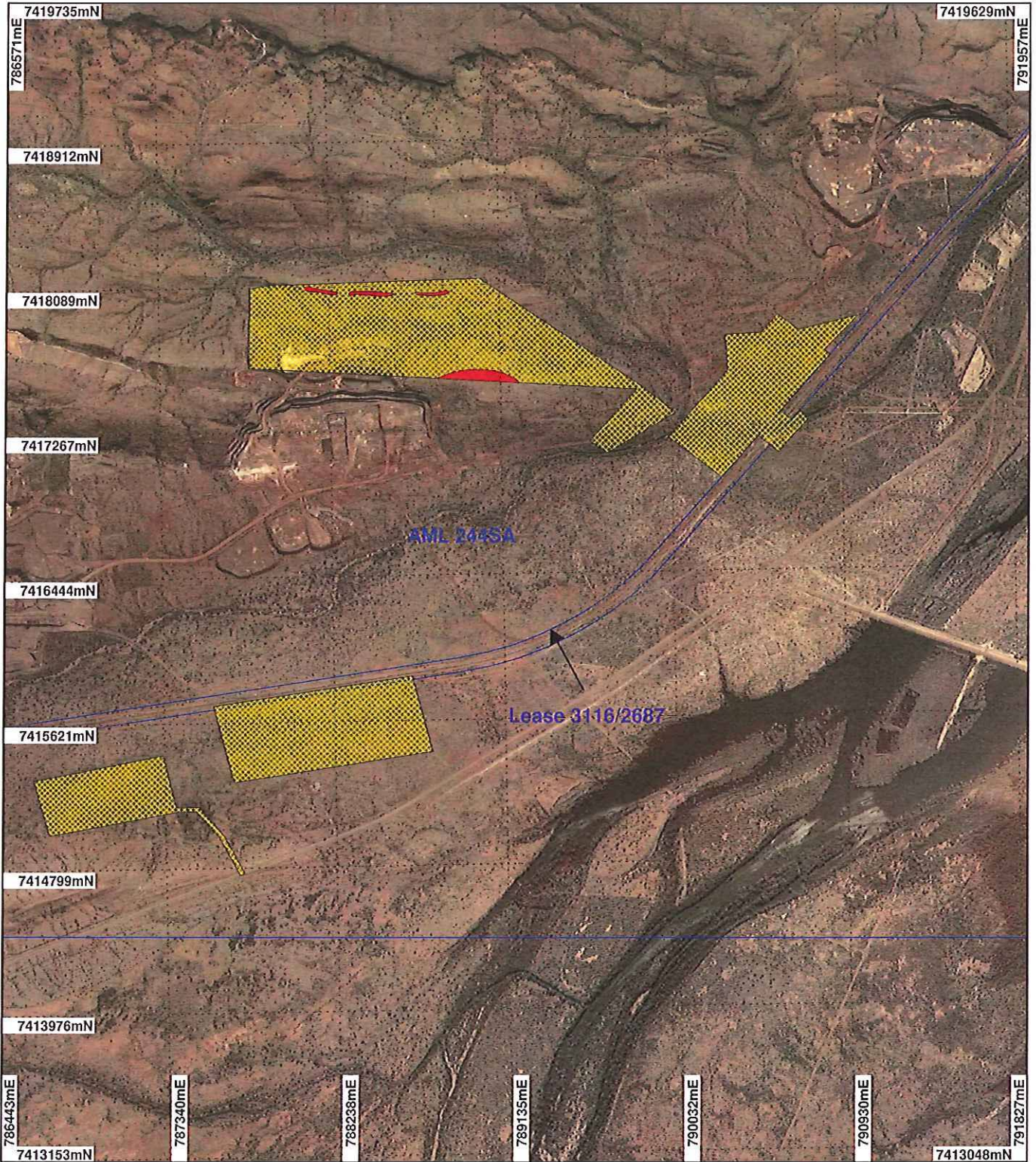
Officer with delegated authority under Section 20 of the Environmental Protection Act 1986

Information derived from this map should be confirmed with the data custodian acknowledged by the agency acronym in the legend.



WA Crown Copyright 2002

# PLAN 3373/3C

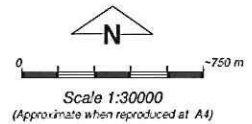


## LEGEND

- Cadastre
- Mining Tenements
- Clearing Instruments
- Areas Approved to Clear

### Clearing Instruments\_1

- Areas Subject to Conditions
- Newman 1, An Orthomosaic - Landgate 2003



Geocentric Datum Australia 1994

Note: the data in this map have not been projected. This may result in geometric distortion or measurement inaccuracies.

*[Handwritten Signature]* Date: 07/12/12

KIM ANDERSON

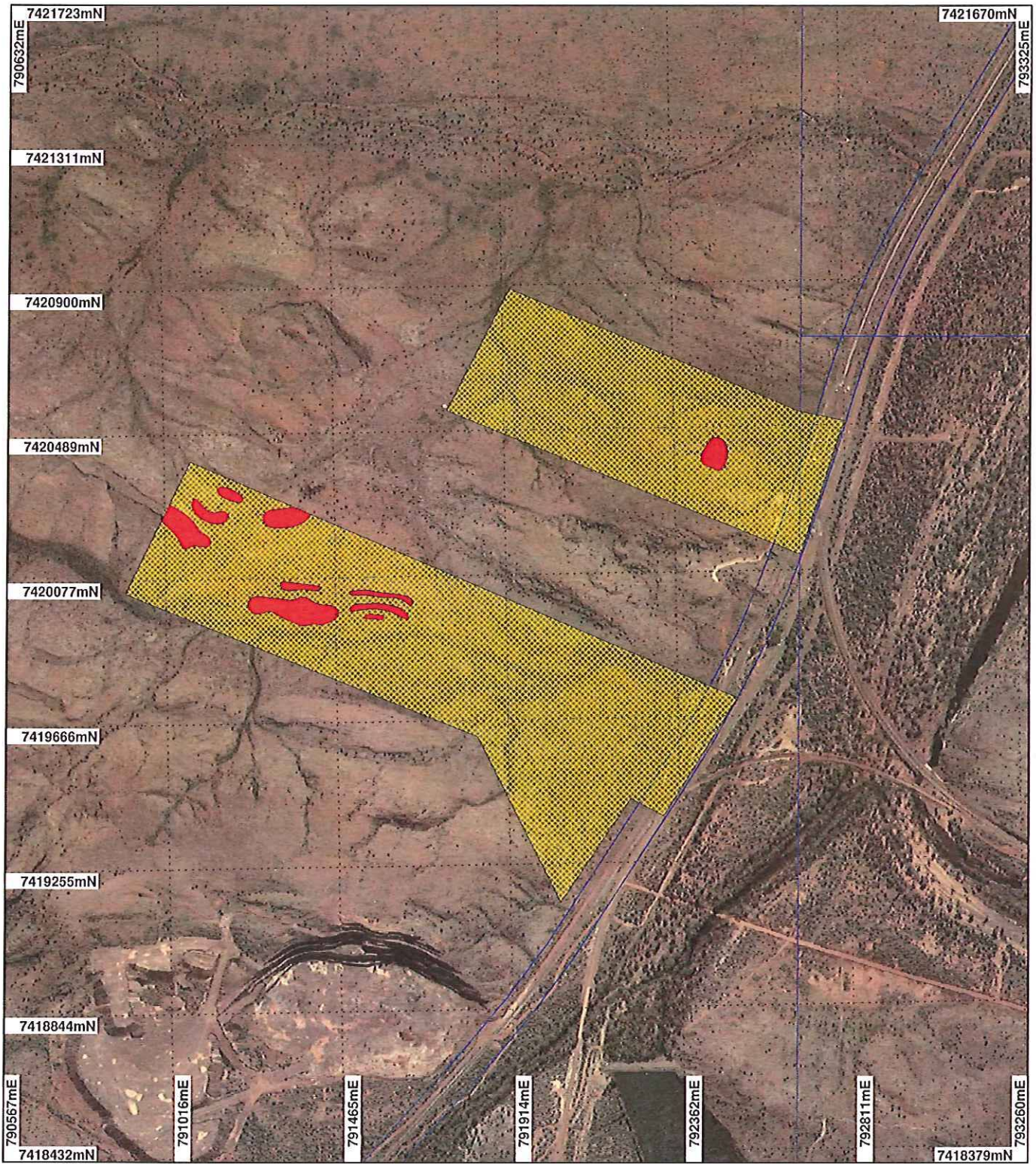
Officer with delegated authority under Section 20 of the Environmental Protection Act 1986

Information derived from this map should be confirmed with the data custodian acknowledged by the agency acronym in the legend.



WA Crown Copyright 2002

# PLAN 3373/3D

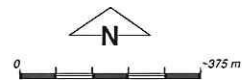


## LEGEND

- Cadastre
- Mining Tenements
- Clearing Instruments
- Areas Approved to Clear

### Clearing Instruments\_1

- Areas Subject to Conditions
- Newman 1.4m Orthomosaic - Landgate 2003



Scale 1:15000  
(Approximate when reproduced at A4)

Geocentric Datum Australia 1994

Note: the data in this map have not been projected. This may result in geometric distortion or measurement inaccuracies.

  
KIM ANDERSON

Date 27/9/12

Officer with delegated authority under Section 20 of the Environmental Protection Act 1986

Information derived from this map should be confirmed with the data custodian acknowledged by the agency acronym in the legend.



WA Crown Copyright 2002