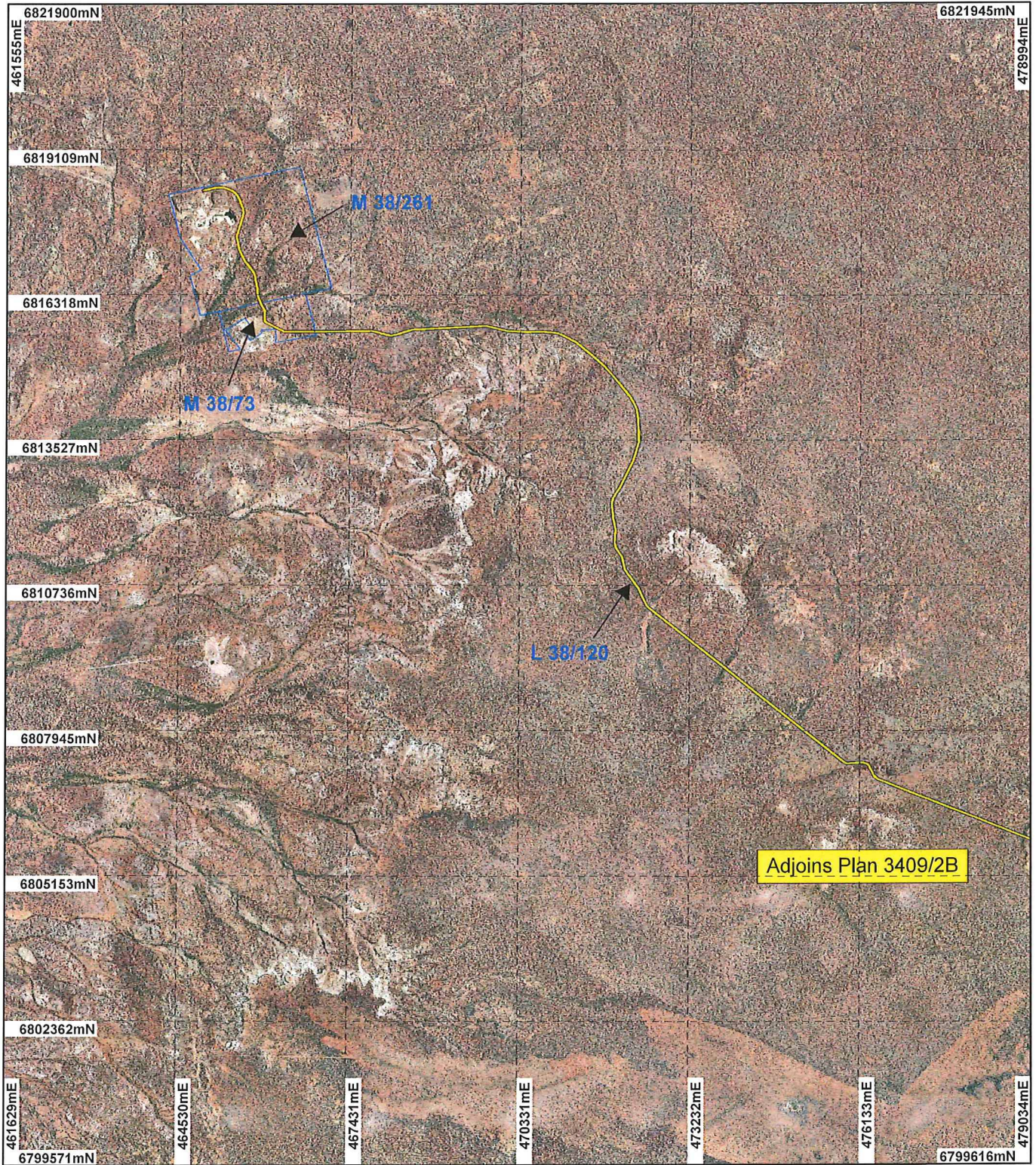



PLAN 3409/2A



LEGEND

- Mining Tenements
- Clearing Instruments
- Areas Approved to Clear
- Burtville 50cm Orthomosaic - Landgate 2006



0 ~2.5 km

Scale 1:100000
(Approximate when reproduced at A4)

Geocentric Datum Australia 1994


Note: the data in this map have not been projected. This may result in geometric distortion or measurement inaccuracies.

..... Date *5/6/04*

STEVE TANTALA

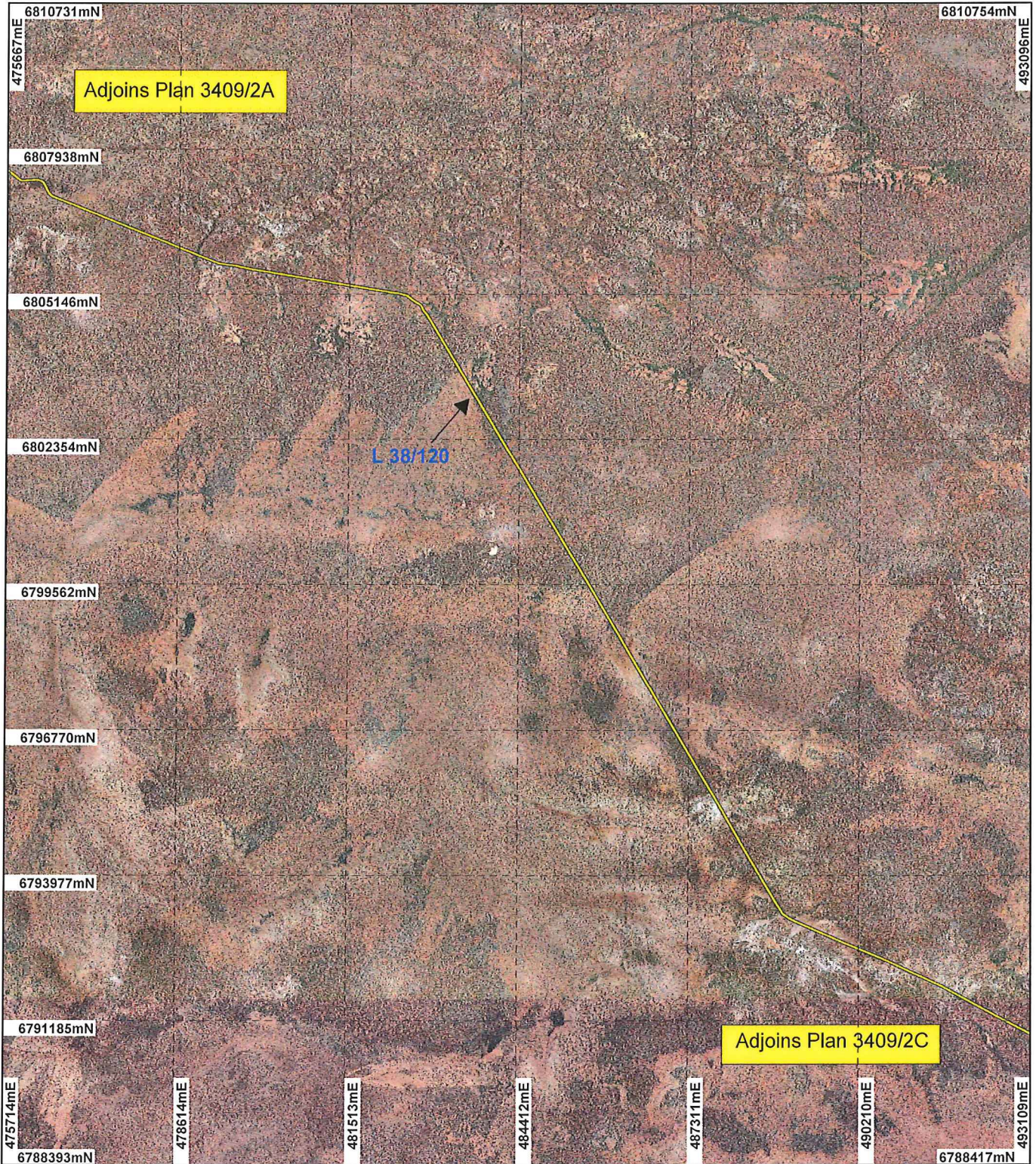
Officer with delegated authority under Section 20 of the Environmental Protection Act 1986

Information derived from this map should be confirmed with the data custodian acknowledged by the agency acronym in the legend.



WA Crown Copyright 2002

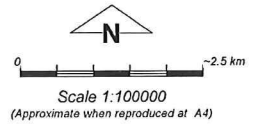
PLAN 3409/2B



LEGEND

- Mining Tenements
- Clearing Instruments
- Areas Approved to Clear
- Mount Celia 50cm Orthomosaic - Landgate 2006

Burtyville 50cm Orthomosaic - Landgate 2006



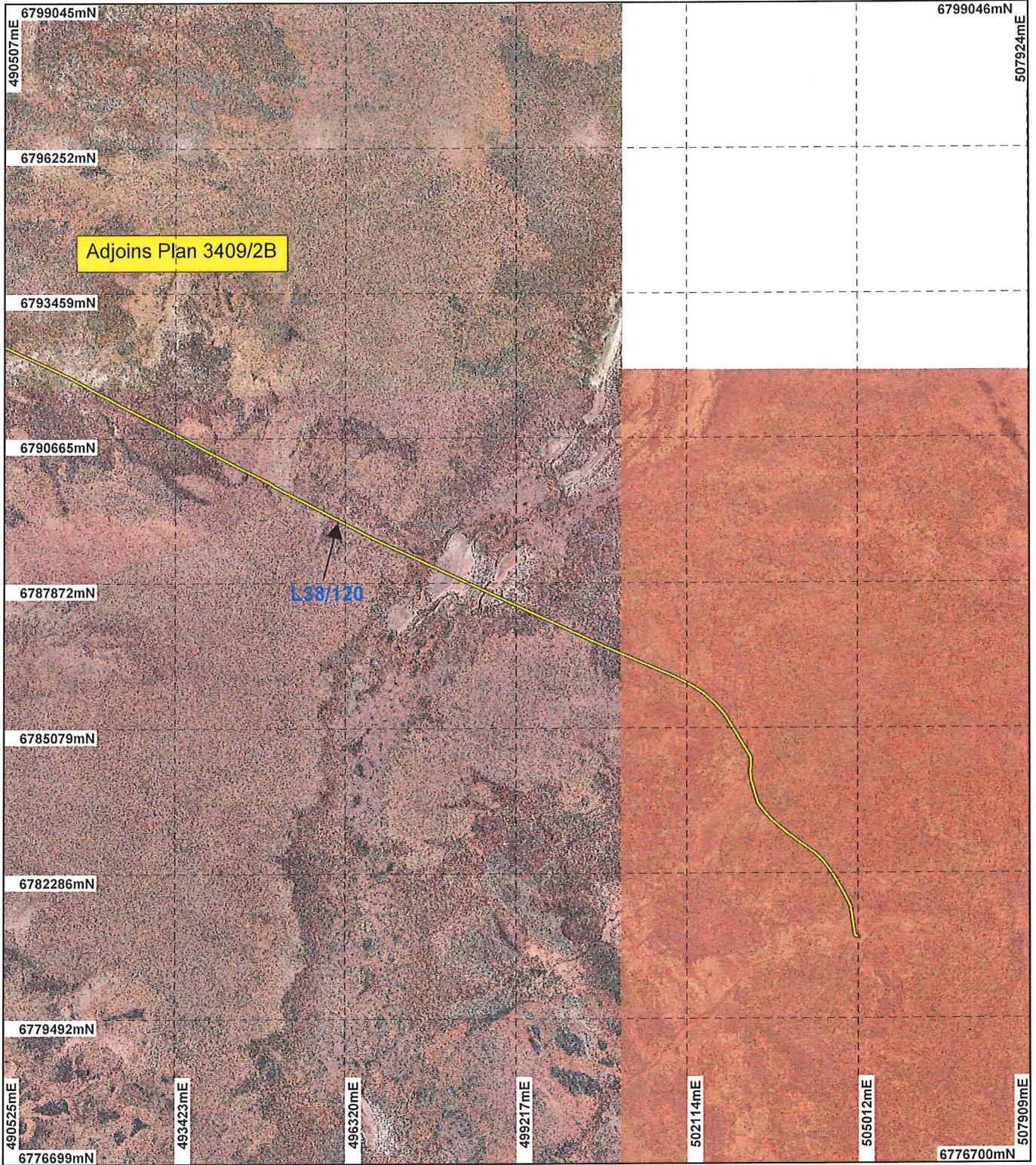
Geocentric Datum Australia 1994
 Note: the data in this map have not been projected. This may result in geometric distortion or measurement inaccuracies.

 Date 5/11

STEVE TANTALA
 Officer with delegated authority under Section 20 of the Environmental Protection Act 1986
 Information derived from this map should be confirmed with the data custodian acknowledged by the agency acronym in the legend.



PLAN 3409/2C

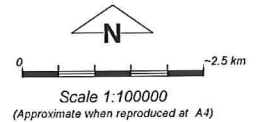


LEGEND

- Mining Tenements
- Clearing Instruments
- Areas Approved to Clear
- Lightfoot 1.25m Orthomosaic - Landgate 2004

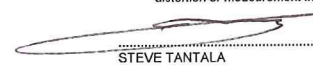
Mount Celia 50cm
Orthomosaic - Landgate
2006

Burville 50cm Orthomosaic -
Landgate 2006



Geocentric Datum Australia 1994

Note: the data in this map have not been projected. This may result in geometric distortion or measurement inaccuracies.

 Date 5/1/04

STEVE TANTALA
Officer with delegated authority under Section 20 of
the Environmental Protection Act 1986

Information derived from this map should be confirmed with the data custodian acknowledged by the agency acronym in the legend.

