

# CPS 3432/3 - Map

128°42.000'E

128°42.600'E

128°43.200'E

15°31.800'S

15°32.400'S

15°33.000'S

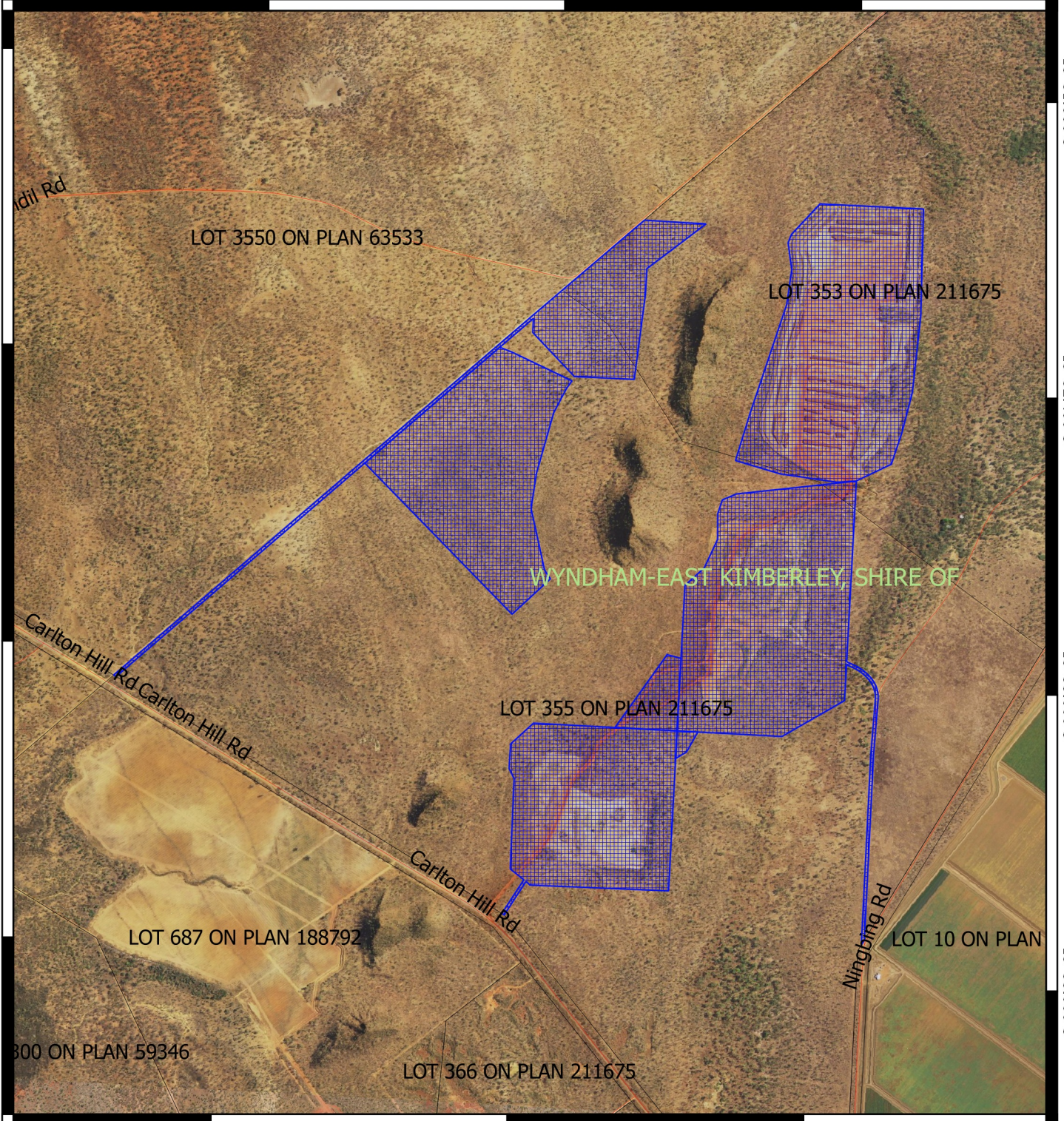
15°33.600'S

15°31.800'S

15°32.400'S

15°33.000'S

15°33.600'S




128°42.000'E

128°42.600'E

128°43.200'E

## Legend

 CPS areas applied to clear base layers

 Cadastre

 Road Centrelines

 Local Government Authorities

Image



MGA 94  
Geocentric Datum of Australia 1994

0 250 500 750 1000 m



Officer delegated under Section 20 of the  
*Environmental Protection Act 1986*



GOVERNMENT OF  
WESTERN AUSTRALIA