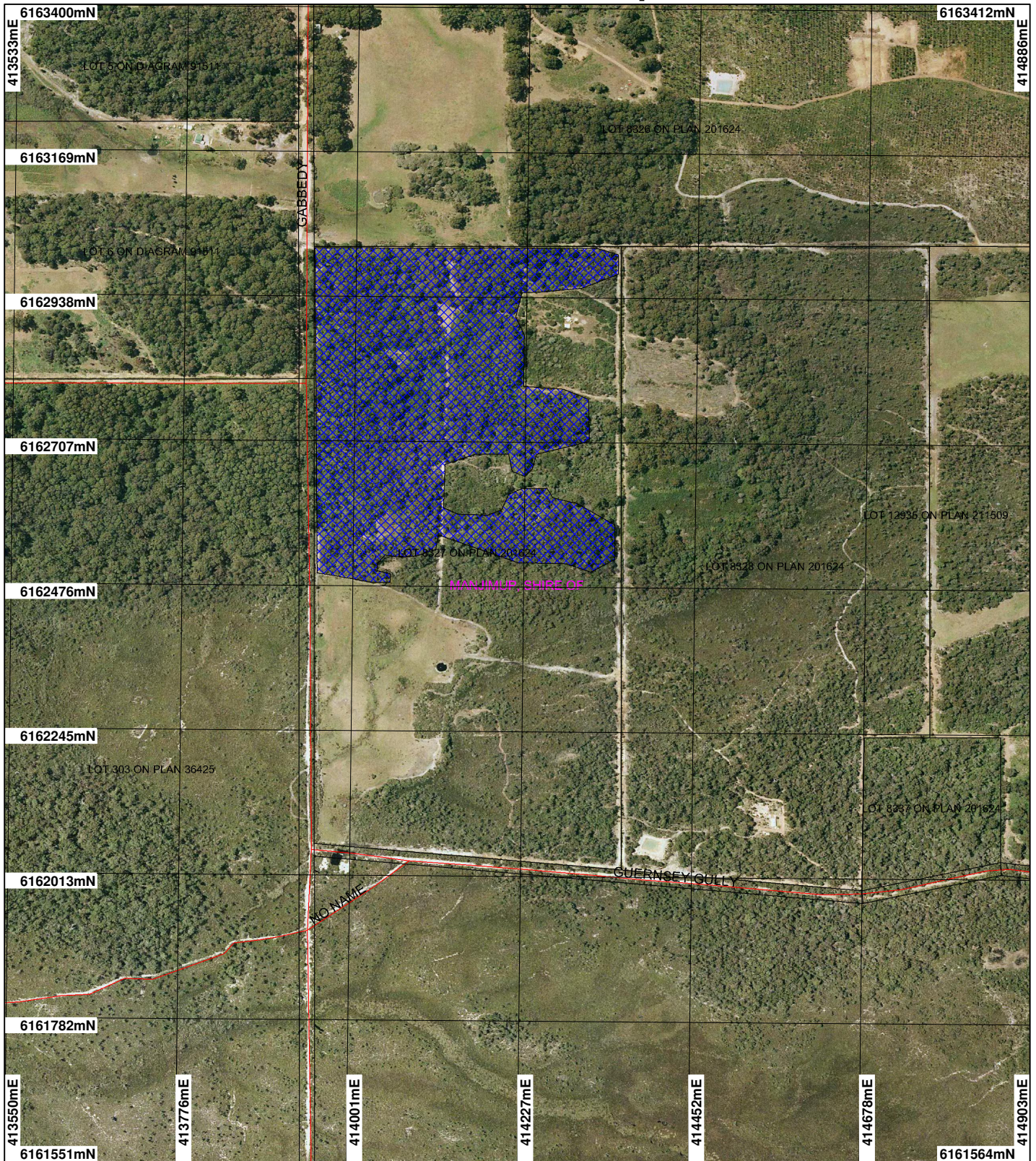


# CPS 3442/1 - Map



## LEGEND

### Clearing Instruments

- Areas Applied to Clear
- Areas Subject to Conditions
- Areas Approved to Clear
- Road Centrelines

Cadastre

Towns  
Local Government Authorities

CPS\_2D\_II \*

NorthCliffe 50cm  
Orthomosaic - Landgate  
2004



0 200 m

Scale 1:8088

(Approximate when reproduced at A4)

Geocentric Datum Australia 1994

Note: the data in this map have not been projected. This may result in geometric distortion or measurement inaccuracies.

..... Date .....

Officer with delegated authority under Section 20 of the Environmental Protection Act 1986

Information derived from this map should be confirmed with the data custodian acknowledged by the agency acronym in the legend.



Department of  
**Environment and Conservation**

Our environment, our future WA Crown Copyright 2002

\* Project Data is denoted by asterisk. This data has not been quality assured. Please contact map author for details.