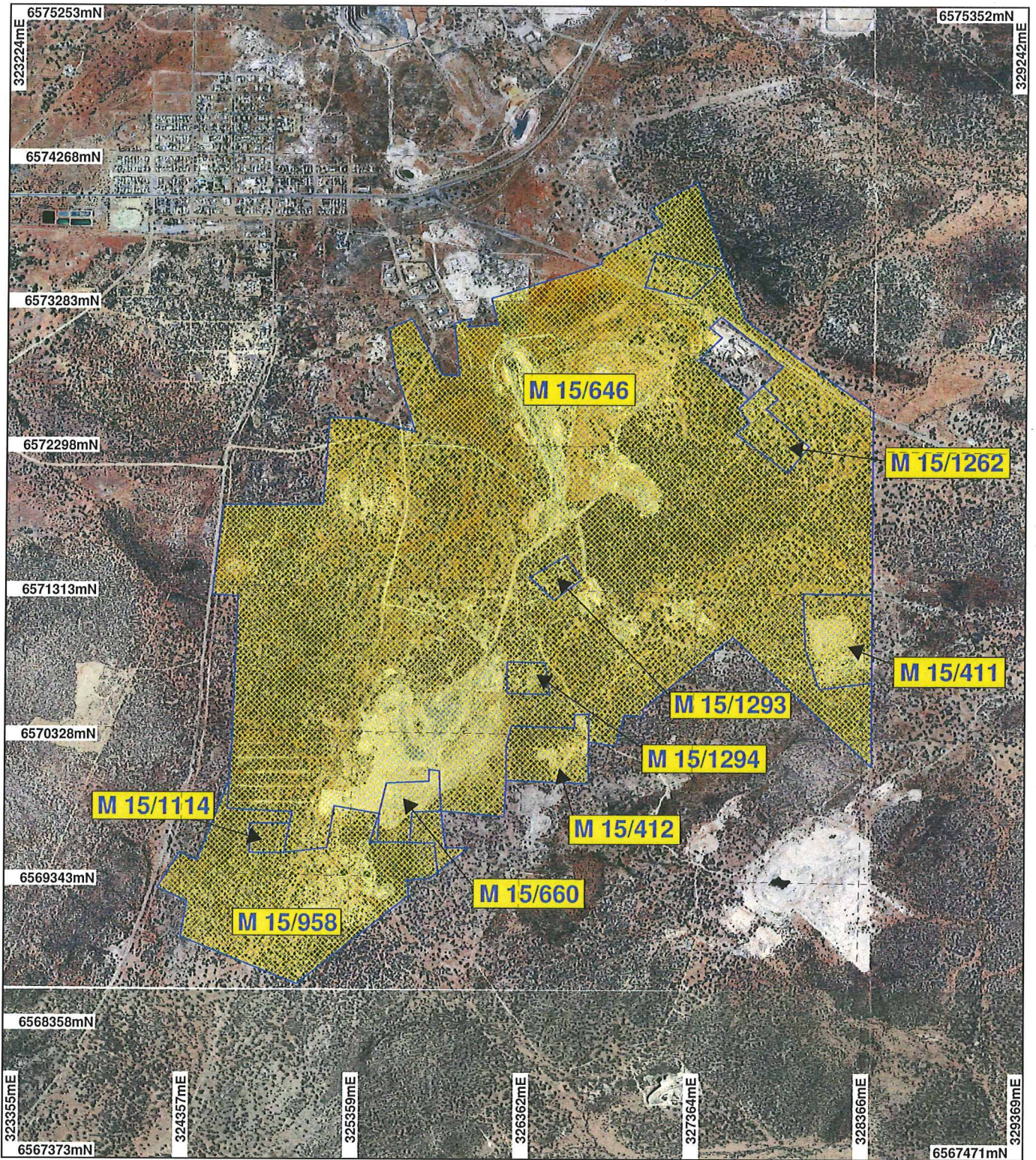
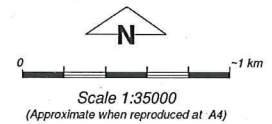


# PLAN 3527/2




## LEGEND

- |   |  |  |  |
|---|--|--|--|
| <b>Clearing Instruments</b>   |  | <b>Kalgoorlie 50cm Orthomosaic - Landgate 2006</b>   |  |
|  Areas Approved to Clear |  |  Mining Tenements |  |
| <b>Yilmja 1.4m Orthomosaic - Landgate 2003</b>  |  |  |  |



Note: the data in this map have not been projected. This may result in geometric distortion or measurement inaccuracies.

 Date 30/5/13

STEVE TANTALA  
Officer with delegated authority under Section 20 of the Environmental Protection Act 1986

Information derived from this map should be confirmed with the data custodian acknowledged by the agency acronym in the legend.



WA Crown Copyright 2002