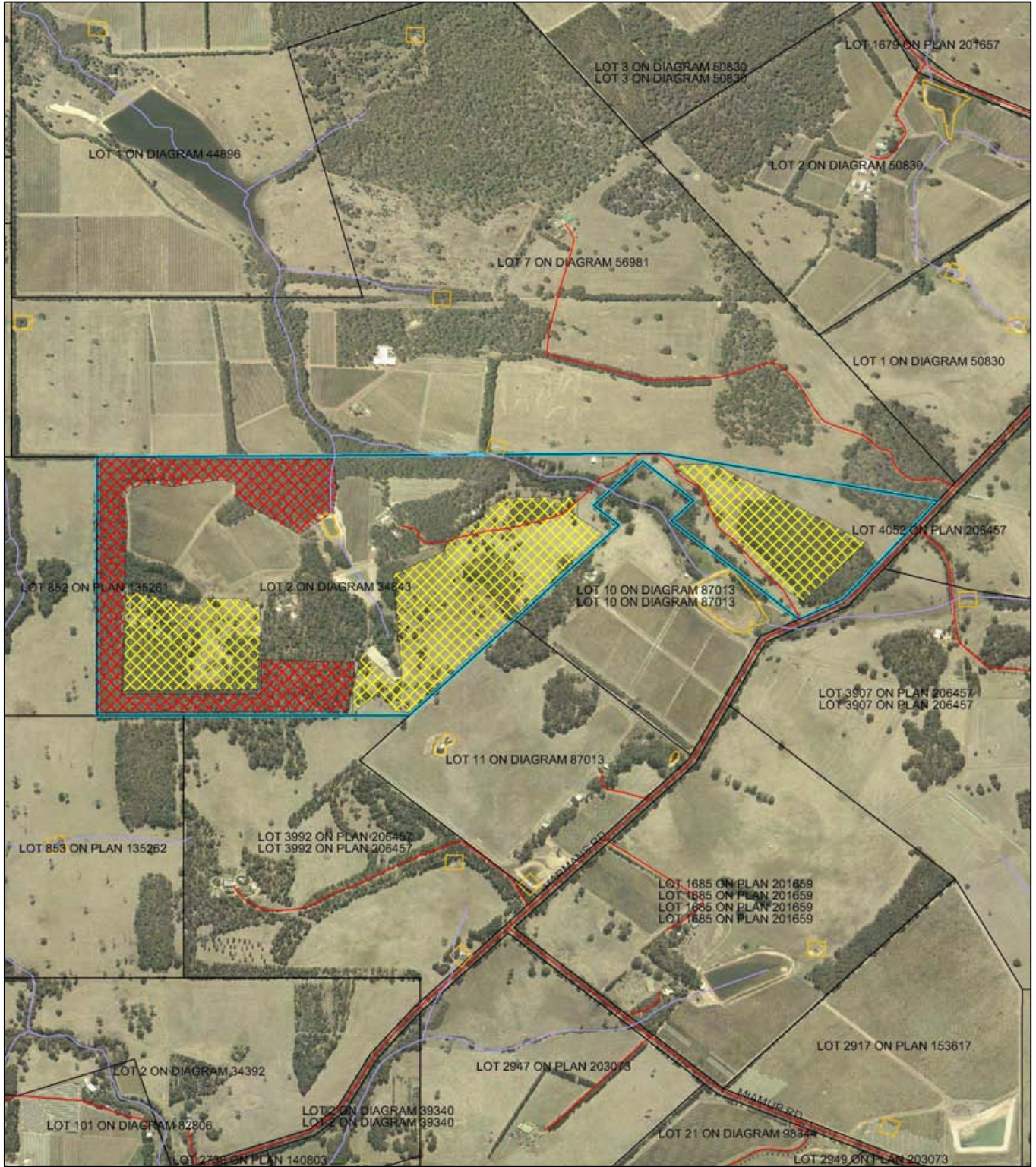


# Plan354/1



## LEGEND

Land parcels related to instrument

### Clearing Instruments

Areas Subject to Conditions  
 Areas Approved to Clear  
 Road Centrelines - DLI 1/5/04

Cadastre - DLI 1/09/04

Busselton 50cm Orthomosaic - DLI 03

Hydrography, linear - DOE 1/2/04

(cont)

~ Area Subject to Inundation  
~ Braided Stream Area  
~ Claypan  
~ Coastal Waterline  
~ Dam Wall  
~ Dam Wall - carrying road  
~ Drain - major  
~ Drain - minor  
~ Earth Dam  
~ Estuarine  
~ Flood Limit Area  
~ Flow Direction Arrow  
~ Foreshore Flats or Sandbank  
~ Groynes Area  
~ Lake - artificial  
 (cont)

~ Lake - non-perennial  
~ Lake - perennial  
~ Levee Bank  
~ Marine Construction - wharf/jetty  
~ Marsh Area  
~ Natural Pool - non-perennial  
~ Natural Pool - perennial  
~ Reef Area  
~ Rock Awash Offshore  
~ Sump  
~ Supply Channel  
~ Swamp - non-perennial  
~ Swamp - perennial  
~ Tidal Flat  
~ Wash Area  
 (cont)

~ Water Reservoir  
~ Watercourse - indefinite  
~ Watercourse - major, non-perennial  
~ Watercourse - major, perennial  
~ Watercourse - minor, non-perennial  
~ Watercourse - minor, perennial  
~ Watercourse Bank - non-perennial  
~ Watercourse Bank - perennial  
~ Waterfalls



Scale 1:15000  
 (Approximate when reproduced at A4)

Geocentric Datum Australia 1994

*Note: the data in this map have not been projected. This may result in geometric distortion or measurement inaccuracies.*

.....Date.....  
 Derek Carew-hopkins

Chief Executive Officer, Department of Environment

Information derived from this map should be confirmed with the data custodian acknowledged by the agency acronym in the legend.

