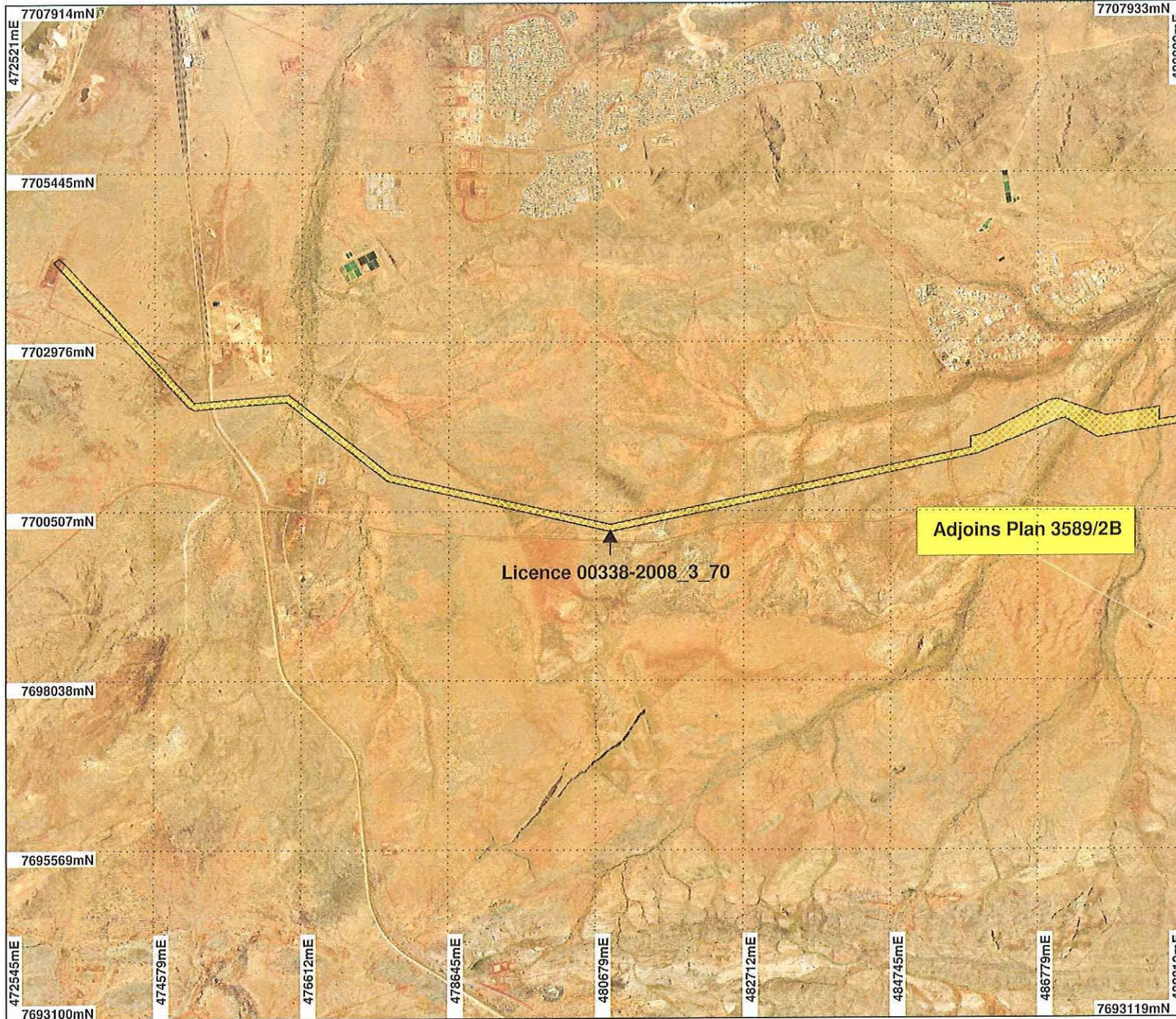


PLAN 3589/2A



LEGEND

- Land parcels related to instrument
- Clearing Instruments
- Areas Approved to Clear
- Dampler and Extensions 50cm
- Orthomosaic - Landgate 2008

Adjoins Plan 3589/2B

Licence 00338-2008_3_70

* Project Data. This data has not been quality assured. Please contact map author for details.



Scale 1:75000

(Approximate when reproduced at A4)

Geocentric Datum Australia 1994

Note: the data in this map have not been projected. This may result in geometric distortion or measurement inaccuracies.

[Signature] Date 26/5/19

RICHARD SELLERS

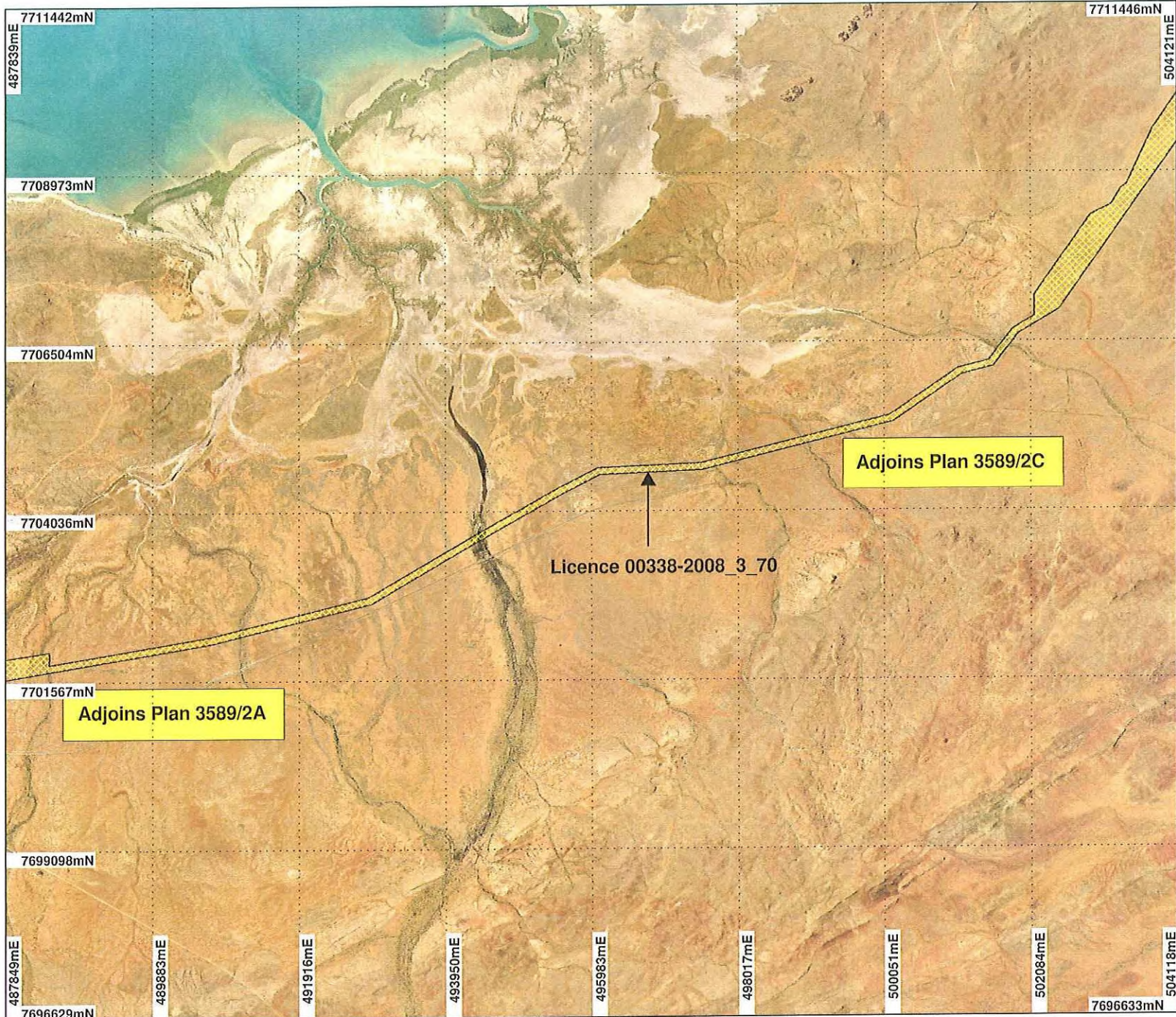
Officer with delegated authority under Section 20 of the Environmental Protection Act 1986

Information derived from this map should be confirmed with the data custodian acknowledged by the agency acronym in the legend.



WA Crown Copyright 2002

PLAN 3589/2B



- LEGEND**
- Land parcels related to instrument
 - Clearing Instruments
 - Areas Approved to Clear
 - Dampler and Extensions 50cm Orthomosaic - Landgate 2008

* Project Data. This data has not been quality assured. Please contact map author for details.



Scale 1:75000
(Approximate when reproduced at A4)

Geocentric Datum Australia 1994

Note: the data in this map have not been checked. This may result in geometric position or measurement inaccuracies.

[Signature] Date *26/5/14*

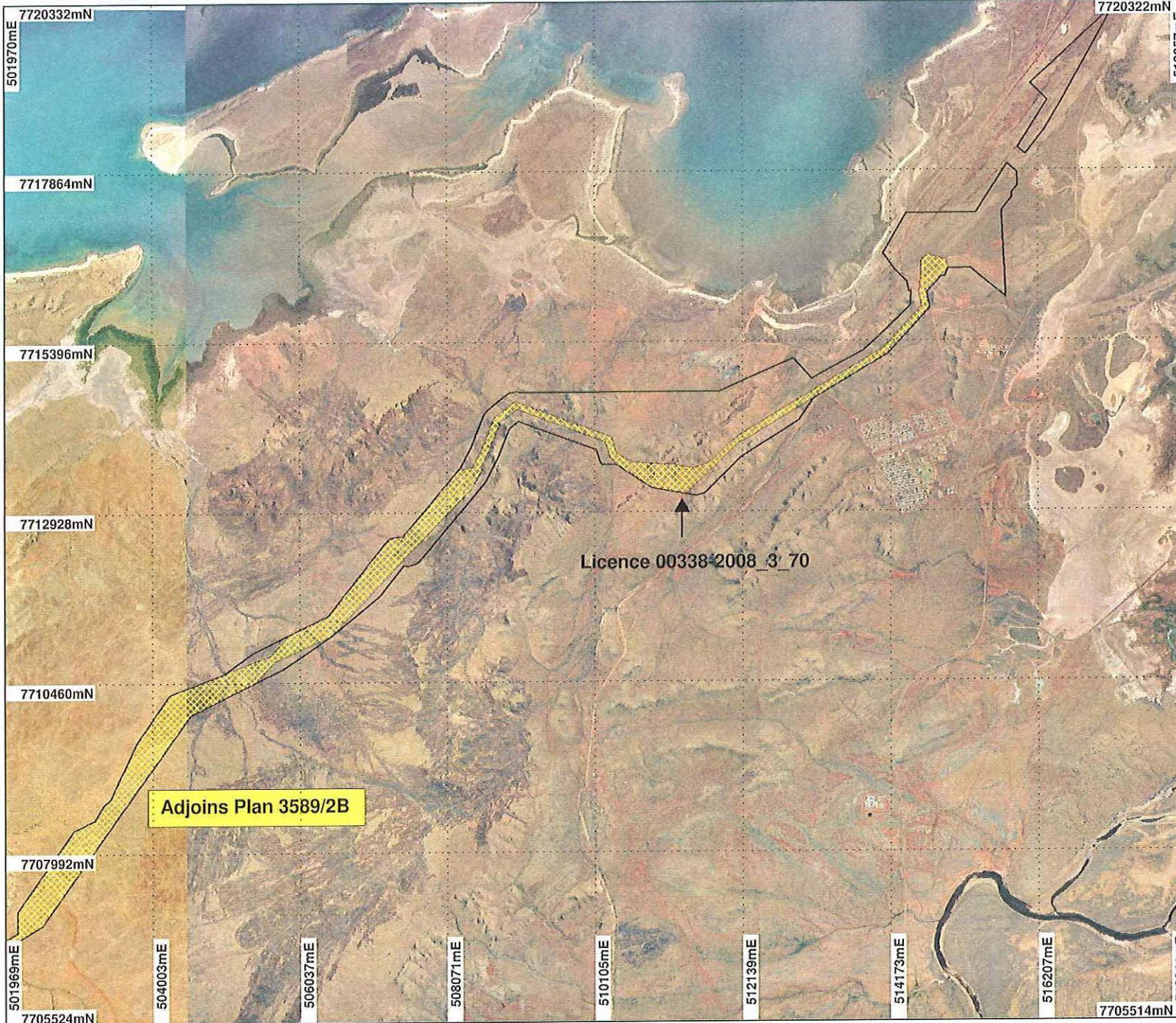
RICHARD SELLERS
Officer with delegated authority under Section 20 of the Environmental Protection Act 1986

Information derived from this map should be confirmed with the data custodian acknowledged by the agency acronym in the legend.



WA Crown Copyright 2002

PLAN 3589/2C



- LEGEND**
- Land parcels related to instrument
 - Clearing Instruments
 - Areas Approved to Clear
 - Roebourne 50cm Orthomosaic - Landgate 2007
 - Dampier and Extensions 50cm Orthomosaic - Landgate 2008

Licence 00338-2008_3_70

Adjoins Plan 3589/2B

* Project Data. This data has not been quality assured. Please contact map author for details.



Scale 1:75000
(Approximate when reproduced at A4)

Geocentric Datum Australia 1994

Note: the data in this map have not been projected. This may result in geometric distortion or measurement inaccuracies.

Date 26/5/07

RICHARD SELLERS
Officer with delegated authority under Section 20 of the Environmental Protection Act 1986

Information derived from this map should be confirmed with the data custodian acknowledged by the agency acronym in the legend.



WA Crown Copyright 2002