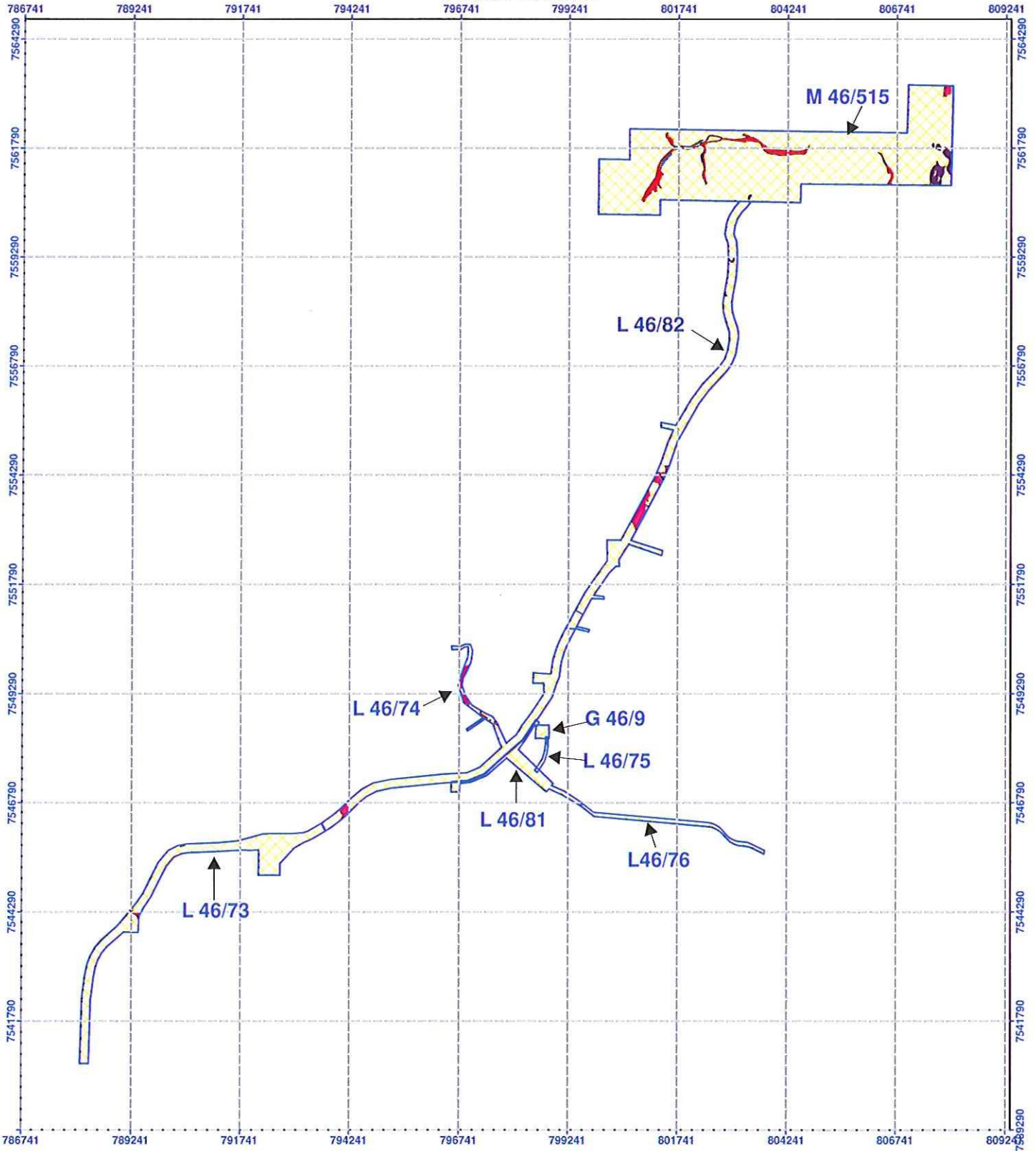









PLAN 3723/2



Legend

-  Mining tenements
-  Area Subject to Condition 2 (Vegetation Units D7a and D15a)
-  Area Subject to Condition 3 (Vegetation Unit D6b)
-  Area Subject to Condition 4 (Vegetation Unit H2a)
-  Area Subject to Condition 5 (Vegetation Unit H8a)
-  Area Subject to Condition 6 (Vegetation Unit PC1b)
-  Area Approved to Clear



Scale 1:20 000



Geocentric Datum Australia 1994
 Note: the data in this map have not been projected. This may result in geometric distortion or measurement inaccuracies.

 Date: 29/9/2011

PHIL GOREY
 Officer with delegated authority under Section 20 of the Environmental Protection Act 1986.
 Information derived from this map should be confirmed with data custodian acknowledged by the agency acronym in the legend.

