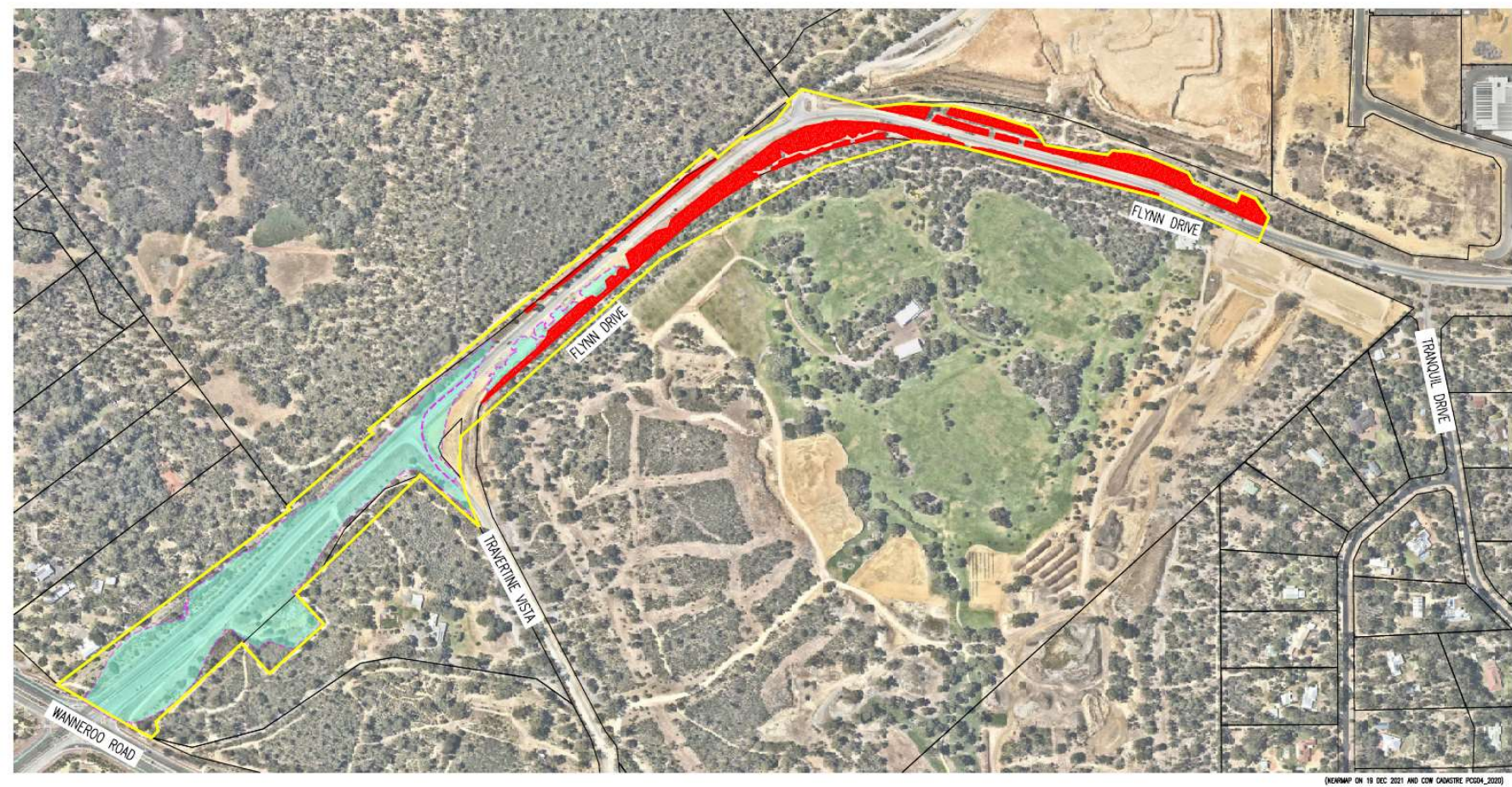




CPS 3731/8 – Supporting information – Change in proposed clearing footprint





(NEWMAP ON 19 DEC 2021 AND CON CADASTRE PC204\_2020)

LEGEND

- 

CADASTRE BOUNDARY
- 

CPS 3731/7 PROPOSED HATCHED AREA FOOTPRINT AMENDMENT  
(NOTE: TOTAL APPROVED CLEARING IN CPS 3731/7 = 6.67 Ha)
- 

CLEARING UNDERTAKEN TO DATE  
UNDER CPS 3731/7 = 4.67 Ha
- 

APPROVED CLEARING REMAINING WITHIN  
CPS 3731/7 HATCHED AREA FOOTPRINT = 2.0 Ha

