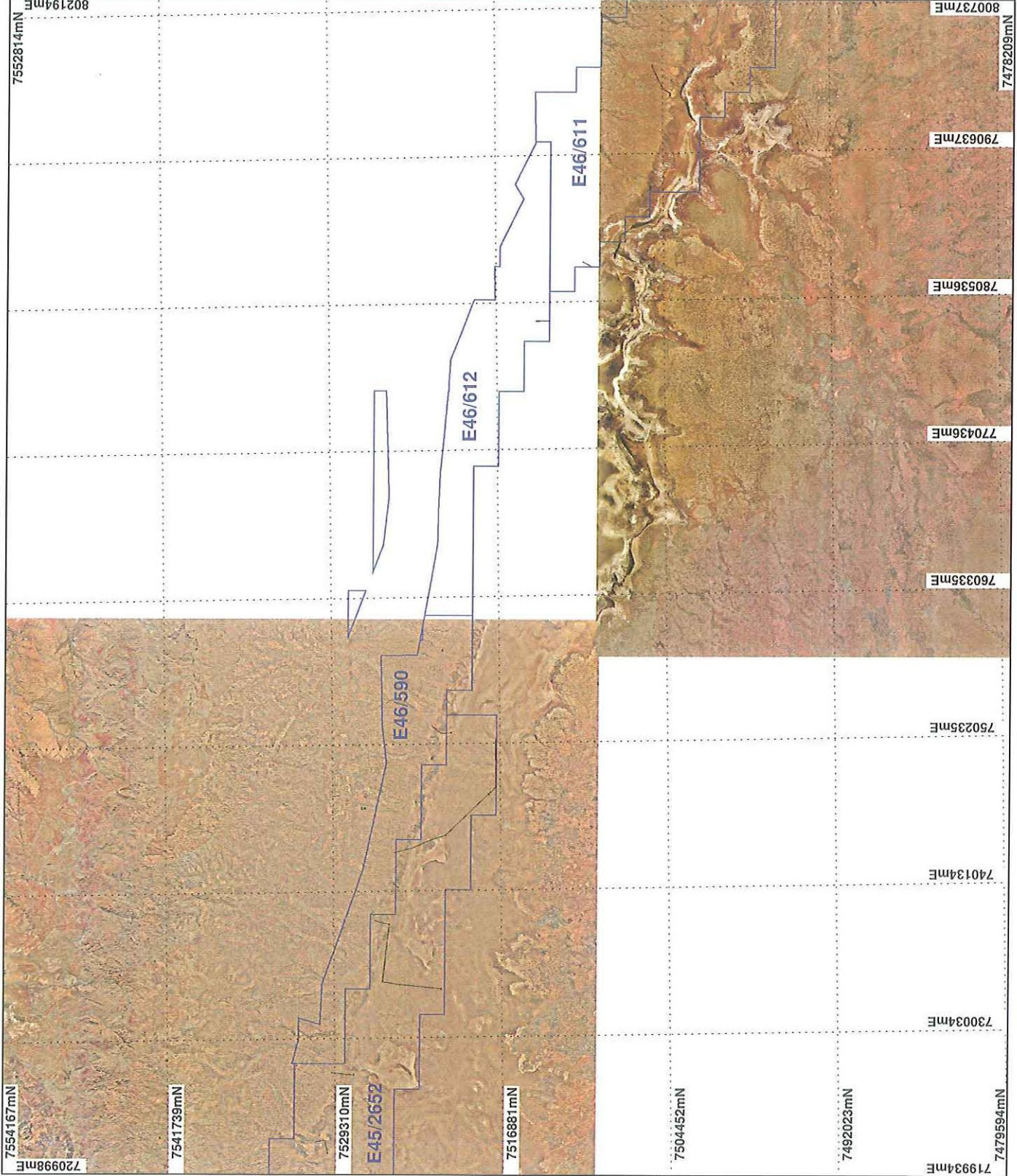


# PLAN 3828/1 A



## LEGEND

- Mining Tenements
  - Clearing Instruments
  - Areas Approved to Clear
  - Clearing Instruments\_1
  - Areas Subject to Conditions
- Mount Marsh 50cm Orthomosaic - Landgate 2008  
 Roy Hill 50cm Orthomosaic - Landgate 2004

\* Project Data. This data has not been quality assured. Please contact map author for details.



0 10 km

Scale 1:375000  
 (Approximate when reproduced at A4)

Geocentric Datum Australia 1994

Note: the data in this map have not been projected. This may result in geometric distortion or measurement inaccuracies.

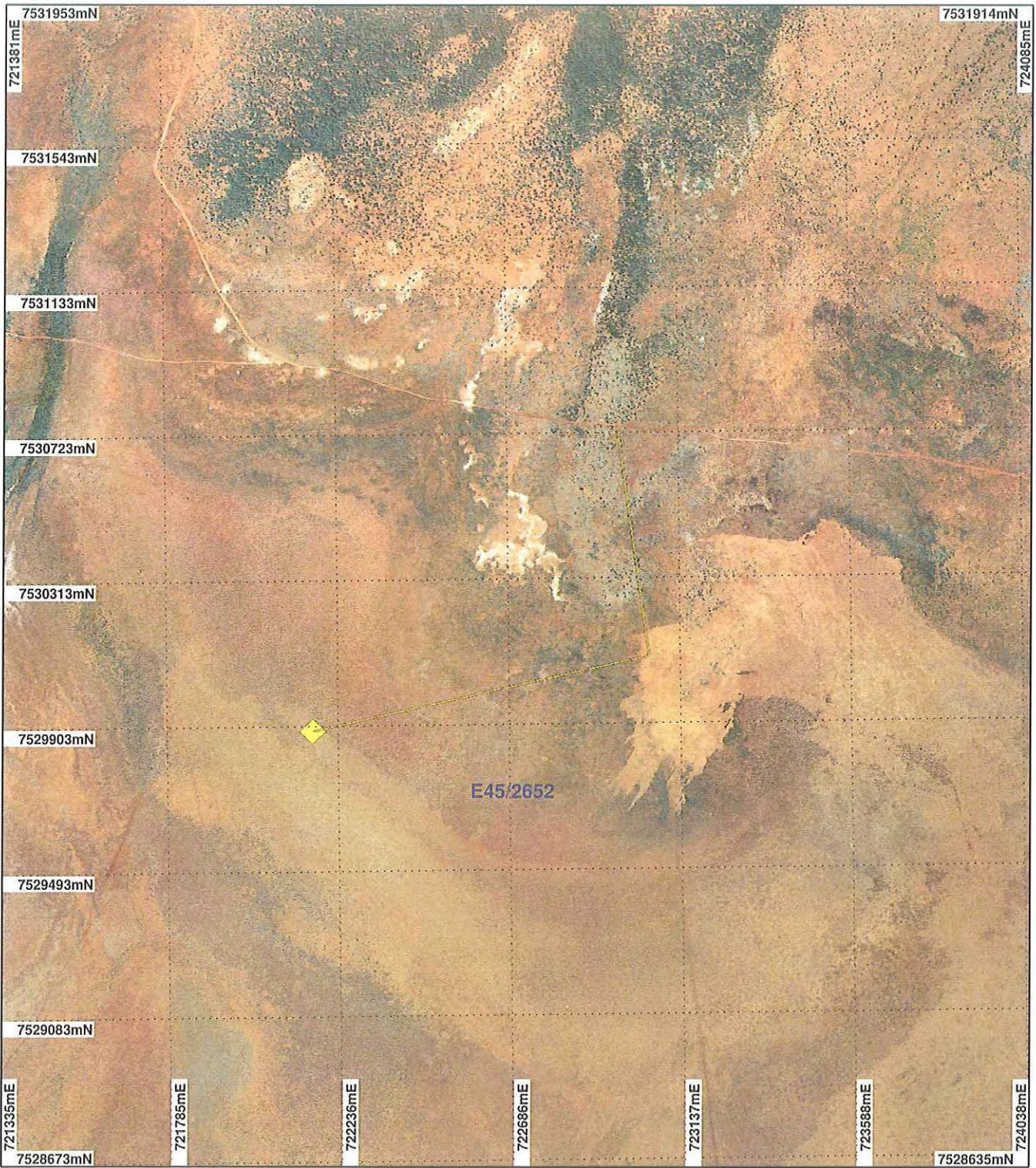
PHIL GOREY Date 23/6/2010

Officer with delegated authority under Section 20 of the Environmental Protection Act 1986  
 Information derived from this map should be confirmed with the data custodian acknowledged by the agency acronym in the legend.



WA Green Copyright 2002

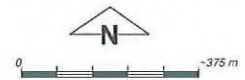
# PLAN 3828/1 B



## LEGEND

- Mining Tenements
- Clearing Instruments
- Areas Approved to Clear
- Clearing Instruments\_1
- Areas Subject to Conditions

Mount Marsh 50cm  
Orthomosaic - Landgate  
2008



Scale 1:15000

(Approximate when reproduced at A4)

Geocentric Datum Australia 1994

Note: the data in this map have not been projected. This may result in geometric distortion or measurement inaccuracies.

PHIL GOREY

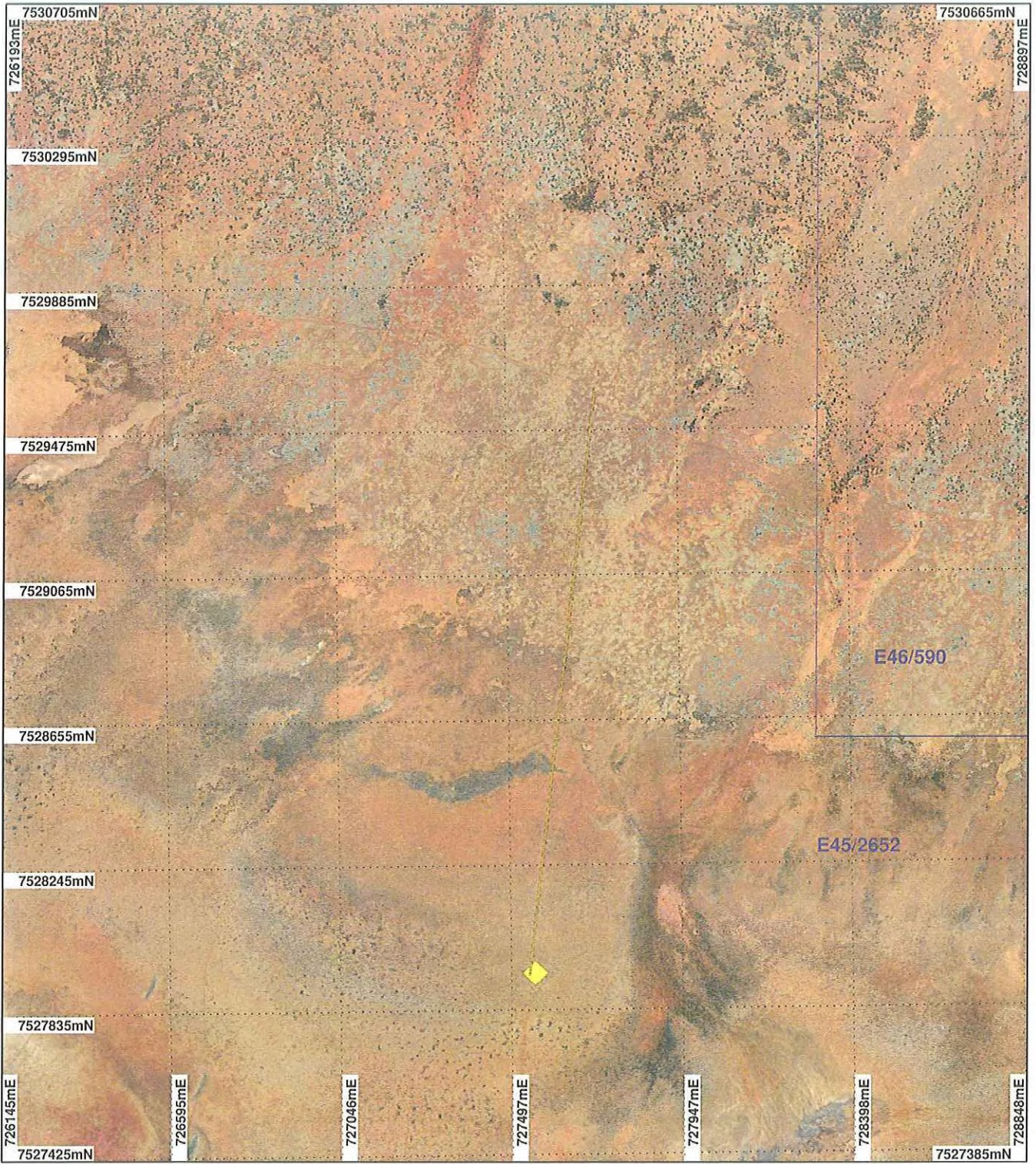
Officer with delegated authority under Section 20 of the Environmental Protection Act 1986

Information derived from this map should be confirmed with the data custodian acknowledged by the agency acronym in the legend.



WA Crown Copyright 2002

# PLAN 3828/1 C



## LEGEND

- Mining Tenements
- Clearing Instruments
- Areas Approved to Clear
- Clearing Instruments\_1
- Areas Subject to Conditions

Mount Marsh 50cm  
Orthomosaic - Landgate  
2008



Scale 1:15000

(Approximate when reproduced at A4)

Geocentric Datum Australia 1994

Note: the data in this map have not been projected. This may result in geometric distortion or measurement inaccuracies.

PHIL GOREY

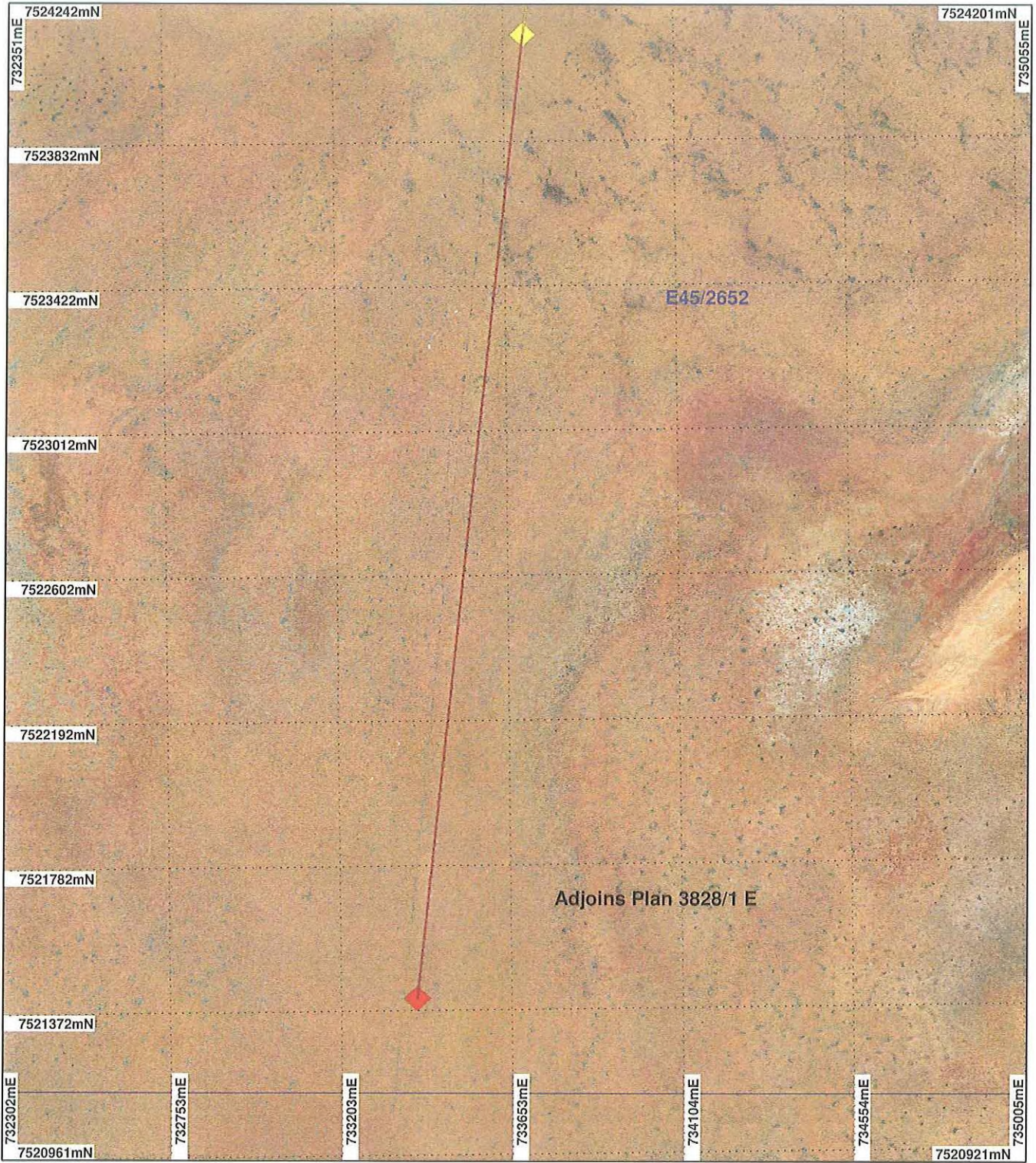
Officer with delegated authority under Section 20 of the Environmental Protection Act 1986

Information derived from this map should be confirmed with the data custodian acknowledged by the agency acronym in the legend.



WA Crown Copyright 2002

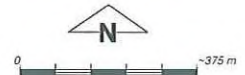
# PLAN 3828/1 D



## LEGEND

- Mining Tenements
- Clearing Instruments
- Areas Approved to Clear
- Areas Subject to Conditions

Mount Marsh 50cm  
Orthomosaic - Landgate  
2008



Scale 1:15000

(Approximate when reproduced at A4)

Geocentric Datum Australia 1994

Note: the data in this map have not been projected. This may result in geometric distortion or measurement inaccuracies.

PHIL GOREY

Officer with delegated authority under Section 20 of the Environmental Protection Act 1986

Information derived from this map should be confirmed with the data custodian acknowledged by the agency acronym in the legend.

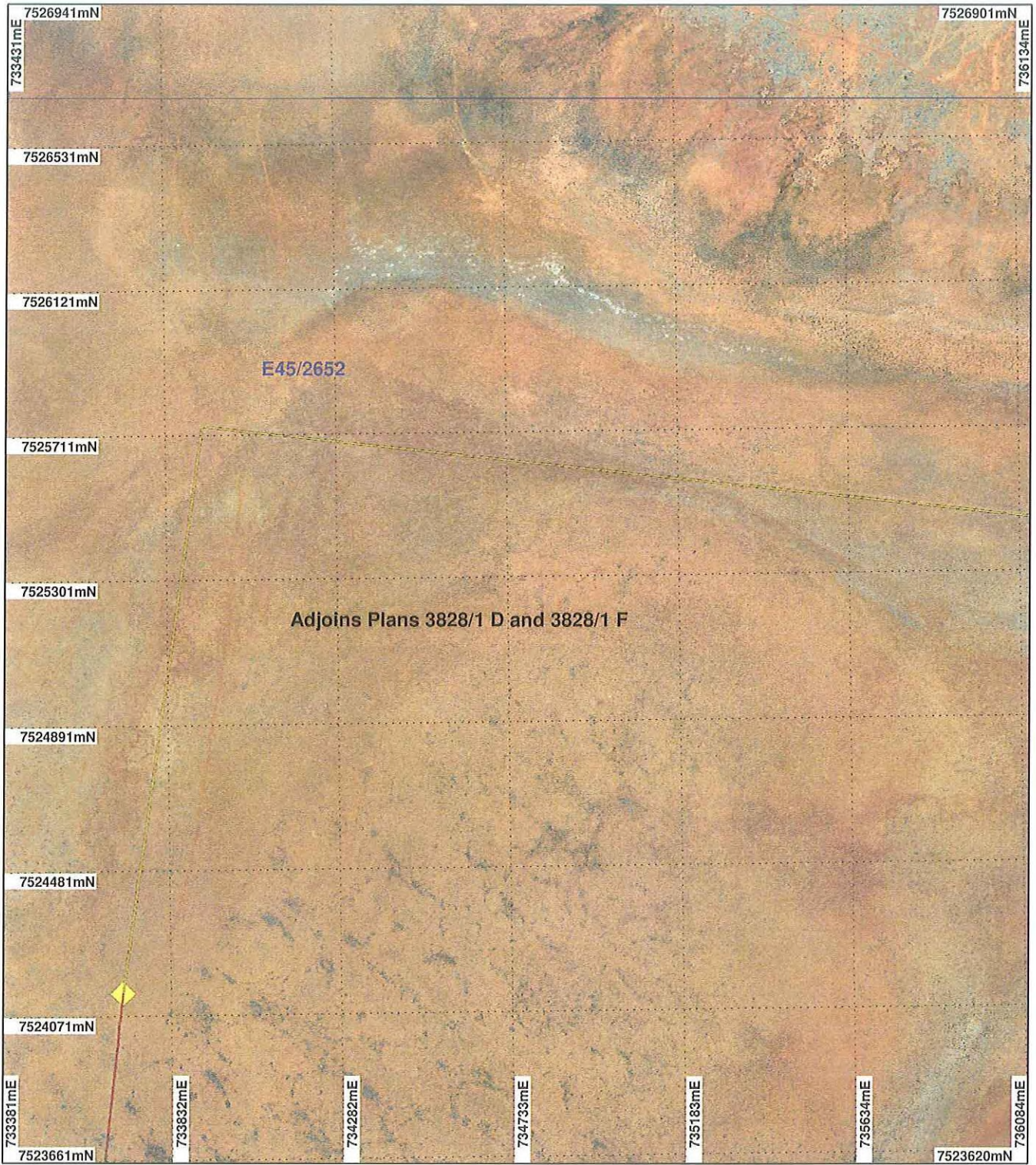


WA Crown Copyright, 2002

Date 23/9/2010

\* Project Data. This data has not been quality assured. Please contact map author for details.

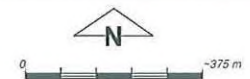
# PLAN 3828/1 E



## LEGEND

- Mining Tenements
- Clearing Instruments
- Areas Approved to Clear
- Clearing Instruments\_1
- Areas Subject to Conditions

Mount Marsh 50cm  
Orthomosaic - Landgate  
2008



Scale 1:15000

(Approximate when reproduced at A4)

Geocentric Datum Australia 1994

Note: the data in this map have not been projected. This may result in geometric distortion or measurement inaccuracies.

*Phil Gorey* Date *23/6/2010*

PHIL GOREY

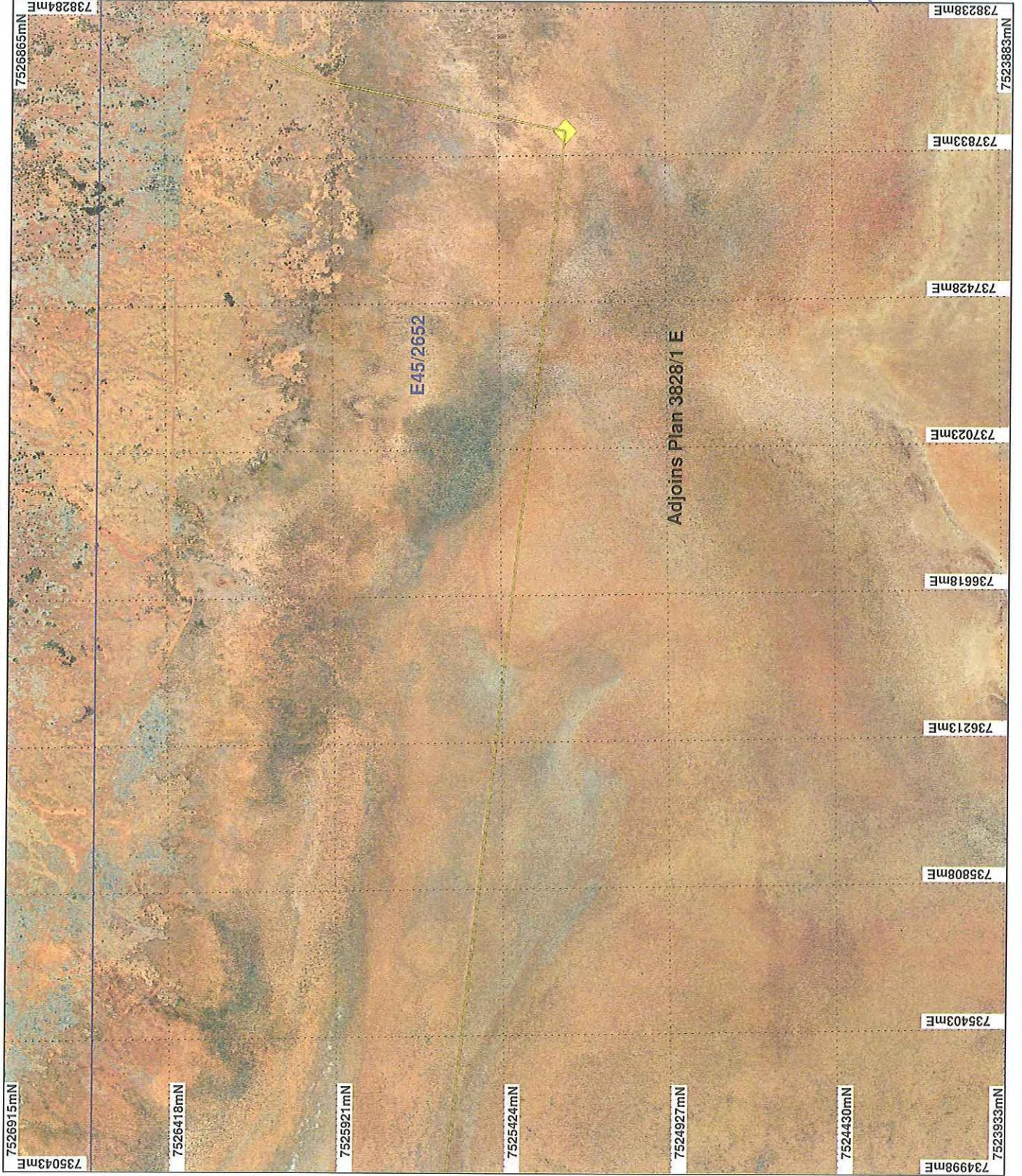
Officer with delegated authority under Section 20 of the Environmental Protection Act 1986

Information derived from this map should be confirmed with the data custodian acknowledged by the agency acronym in the legend.



WA Crown Copyright 2002

# PLAN 3828/1 F



## LEGEND

- Mining Tenements
- Clearing Instruments
- Areas Approved to Clear
- Clearing Instruments\_1
- Areas Subject to Conditions
- Mount Marsh 50cm Orthomosaic - Landgate 2006

\* Project Data. This data has not been quality assured. Please contact map author for details.



0 375 m

Scale 1:15000

(Approximate when reproduced at A4)

Geocentric Datum Australia 1984

Note: the data in this map have not been projected. This may result in geometric distortion or measurement inaccuracies.

23/6/20

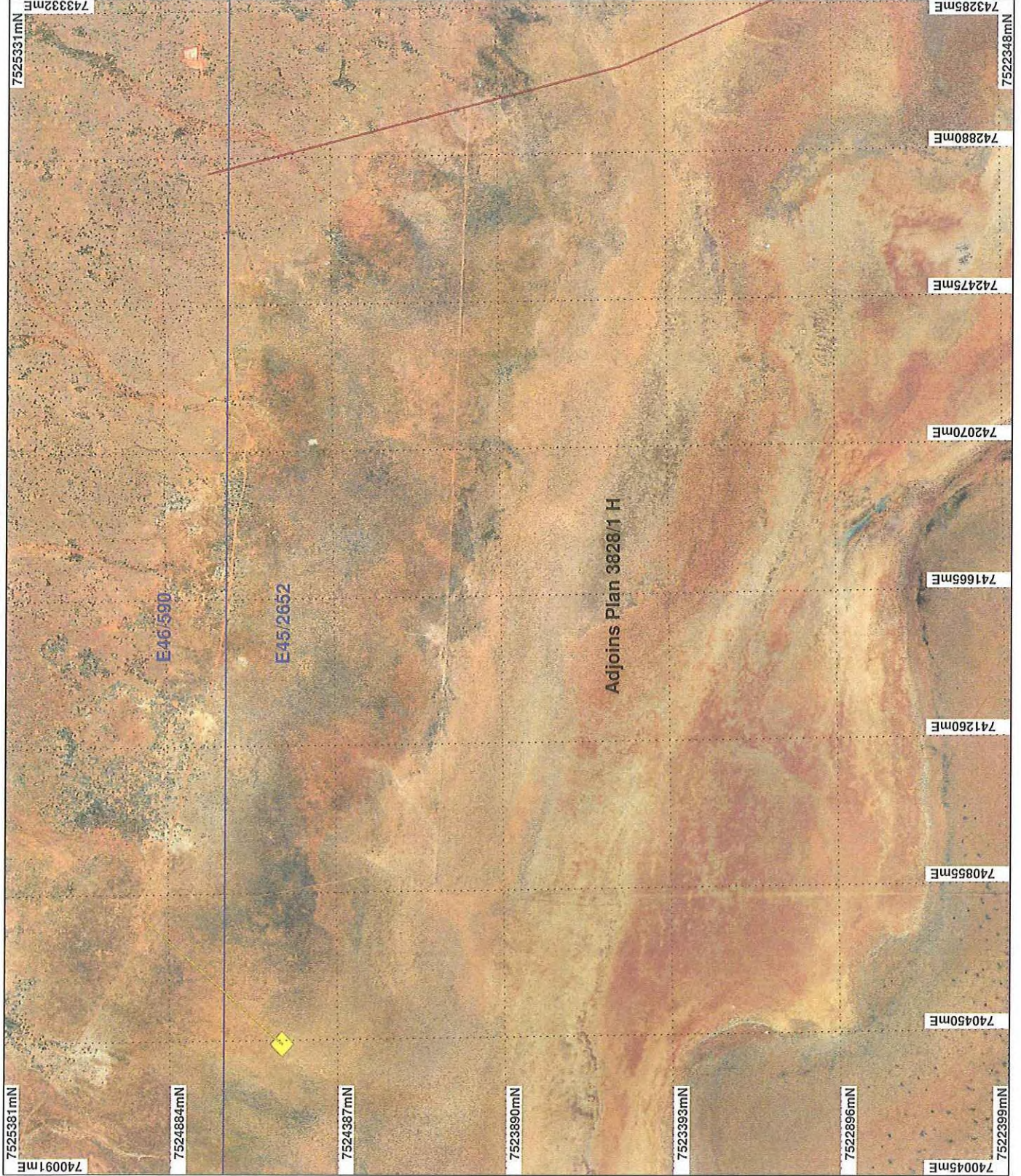
PHIL GOREY Date

Information derived from this map should be confirmed with the data creator and approved by the agency acronym in the legend.



WA Crown Copyright 2002

# PLAN 3828/1 G



## LEGEND

- Mining Tenements
  - Clearing Instruments
  - Areas Approved to Clear
  - Clearing Instruments\_1
  - Areas Subject to Conditions
- Mount Marsh 50cm Orthomosaic -  
 Landgate 2006

\* Project Data. This data has not been quality assured. Please contact map author for details.



0 375 m

Scale 1:15000

(Approximate when reproduced at A4)

Geocentric Datum Australia 1994

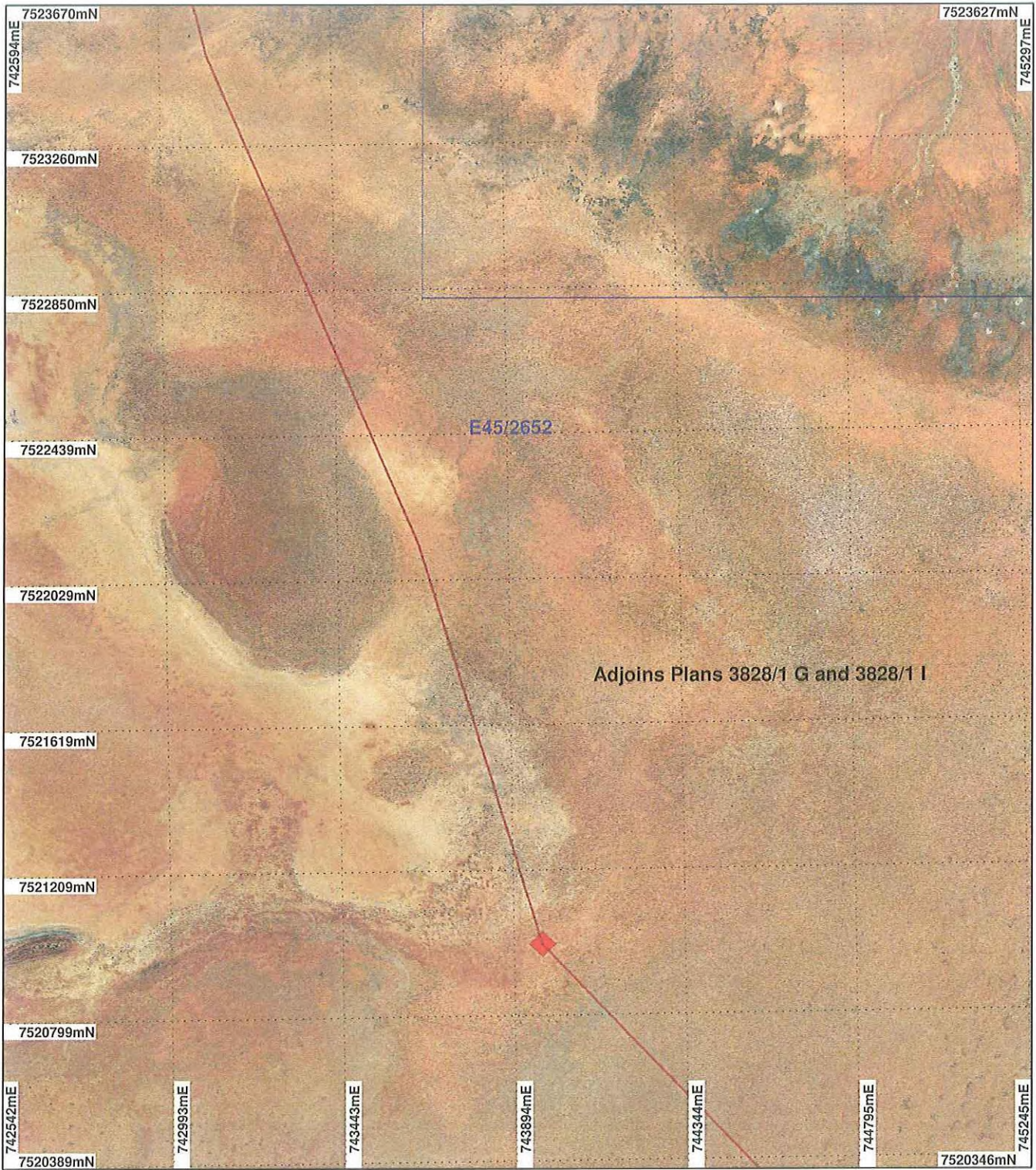
Note: the data in this map have not been projected. This may result in geometric distortion or measurement inaccuracies.

PHIL GOREY Date 23/1/2010

Officer with delegated authority under Section 20 of the Environmental Protection Act 1986  
 Information derived from this map should be confirmed with the data custodian acknowledged by the agency acronym in the legend.



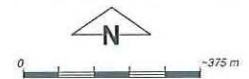
# PLAN 3828/1 H



## LEGEND

- Mining Tenements
- Clearing Instruments
- Areas Approved to Clear
- Clearing Instruments\_1
- Areas Subject to Conditions

Mount Marsh 50cm  
Orthomosaic - Landgate  
2008



Scale 1:15000

(Approximate when reproduced at A4)

Geocentric Datum Australia 1994

Note: the data in this map have not been projected. This may result in geometric distortion or measurement inaccuracies.

PHIL GOREY

Officer with delegated authority under Section 20 of the Environmental Protection Act 1986

Information derived from this map should be confirmed with the data custodian acknowledged by the agency acronym in the legend.

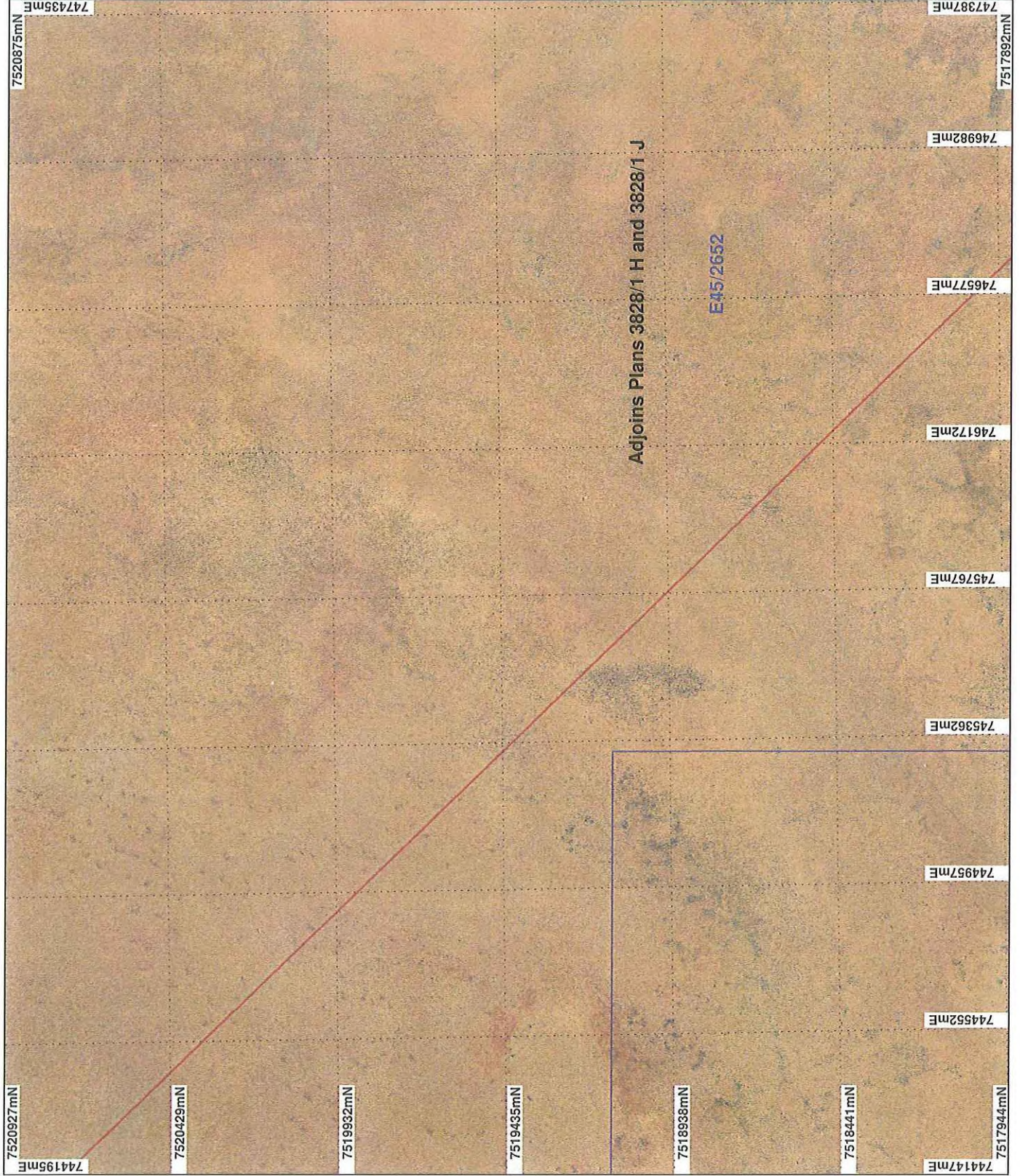


WA Crown Copyright 2002

\* Project Data. This data has not been quality assured. Please contact map author for details.



# PLAN 3828/1 I



## LEGEND

- Mining Tenements
  - Clearing Instruments
  - Areas Approved to Clear
  - Clearing Instruments\_1
  - Areas Subject to Conditions
- Mount Marshall 50cm Orthomosaic -  
 Landgate 2008

\* Project Data. This data has not been quality assured. Please contact map author for details.



0 375 m

Scale 1:15000

(Approximate when reproduced at A4)

Geocentric Datum Australia 1994

Note: the data in this map have not been projected. This may result in geometric distortion or measurement inaccuracies.

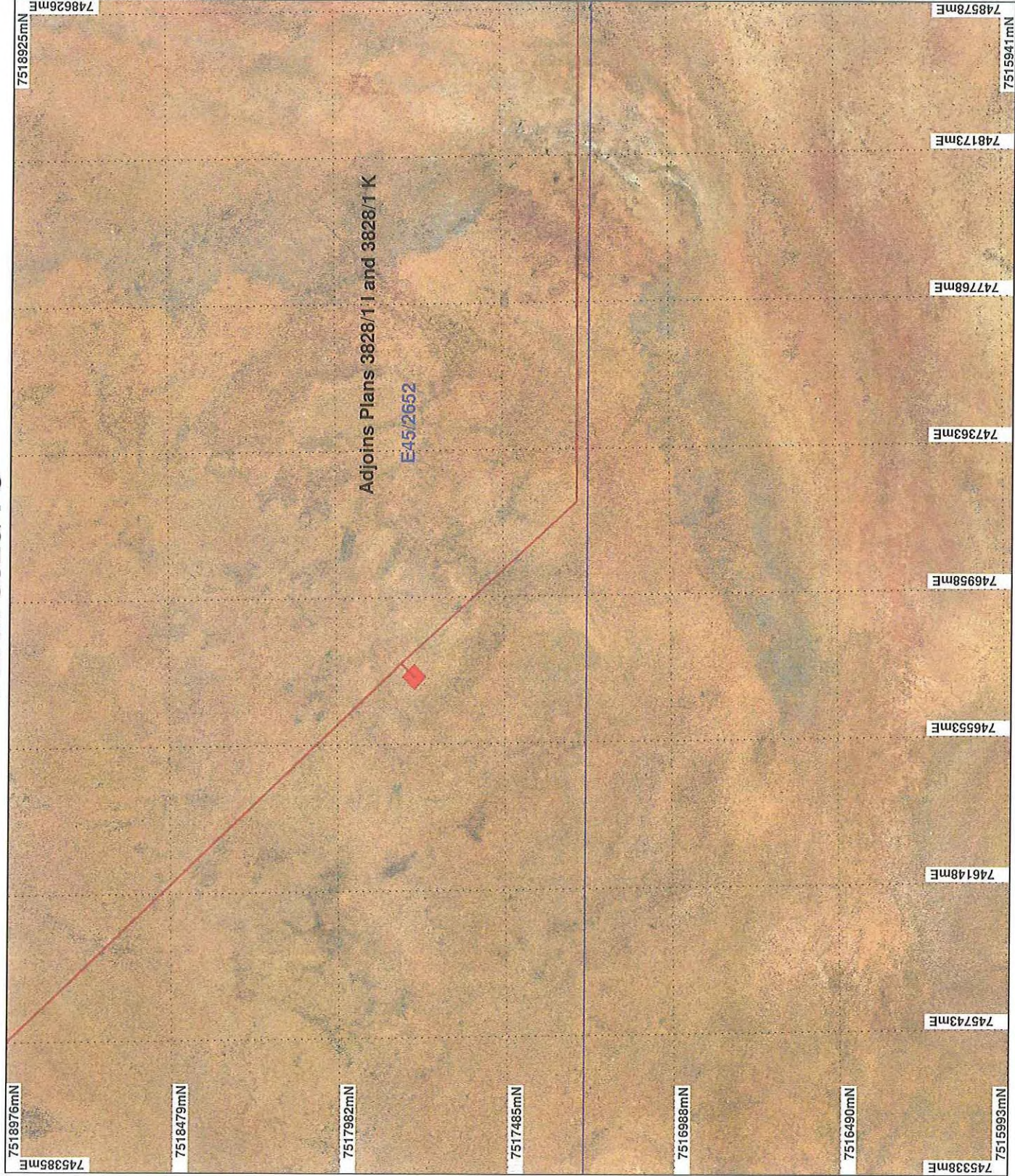
PHIL GOREY ..... Date 23/9/2010

Officer with delegated authority under Section 20 of the Environmental Protection Act 1986  
 Information derived from this map should be confirmed with the data custodian acknowledged by the agency acronym in the legend.



WA Crown Copyright 2002

# PLAN 3828/1 J



## LEGEND

-  Mining Tenements
-  Clearing Instruments
-  Areas Approved to Clear
-  Clearing Instruments\_1
-  Areas Subject to Conditions
-  Mount Marsh 50cm Orthomosaic - Landgate 2008

\* Project Data. This data has not been quality assured. Please contact map author for details.



0 375 m

Scale 1:15000

(Approximate when reproduced at A4)

Geocentric Datum Australia 1994

Note: the data in this map have not been projected. This may result in geometric distortion or measurement inaccuracies.

PHIL GOREY Date 23/9/2010

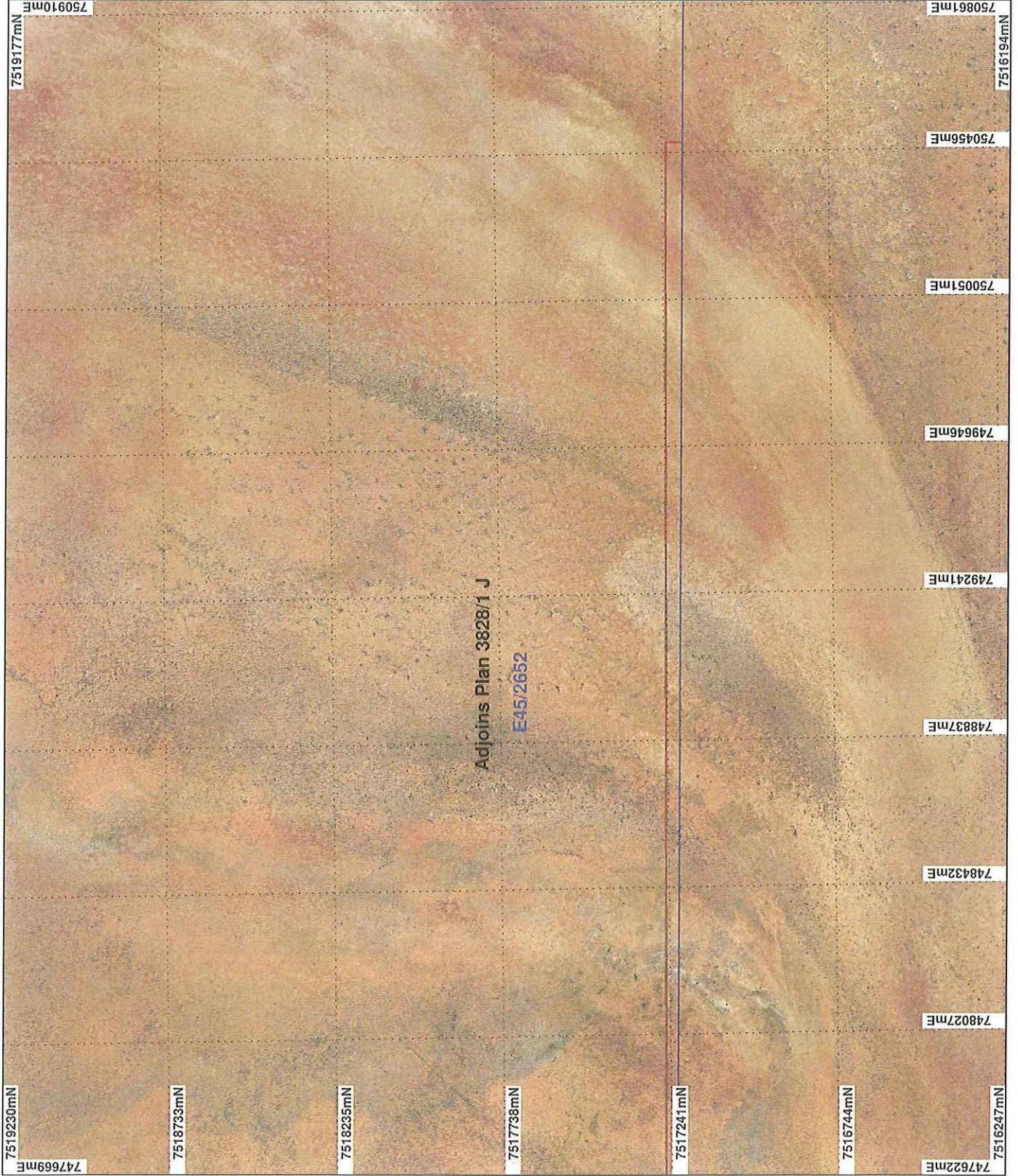
Officer with delegated authority under Section 20 of the Environmental Protection Act 1986

Information derived from this map should be confirmed with the data custodian acknowledged by the agency acronym in the legend.



WA Crown Copyright 2002

# PLAN 3828/1 K



## LEGEND

- Mining Tenements
  - Clearing Instruments
  - Areas Approved to Clear
  - Clearing Instruments\_1
  - Areas Subject to Conditions
- Mount Marsh 50cm Orthomosaic -  
Landgate 2006

\* Project Data. This data has not been quality assured. Please contact map author for details.



0 375 m

Scale 1:15000

(Approximate when reproduced at A4)

Geocentric Datum Australia 1994

Note: the data in this map have not been projected. This may result in geometric distortion or measurement inaccuracies.

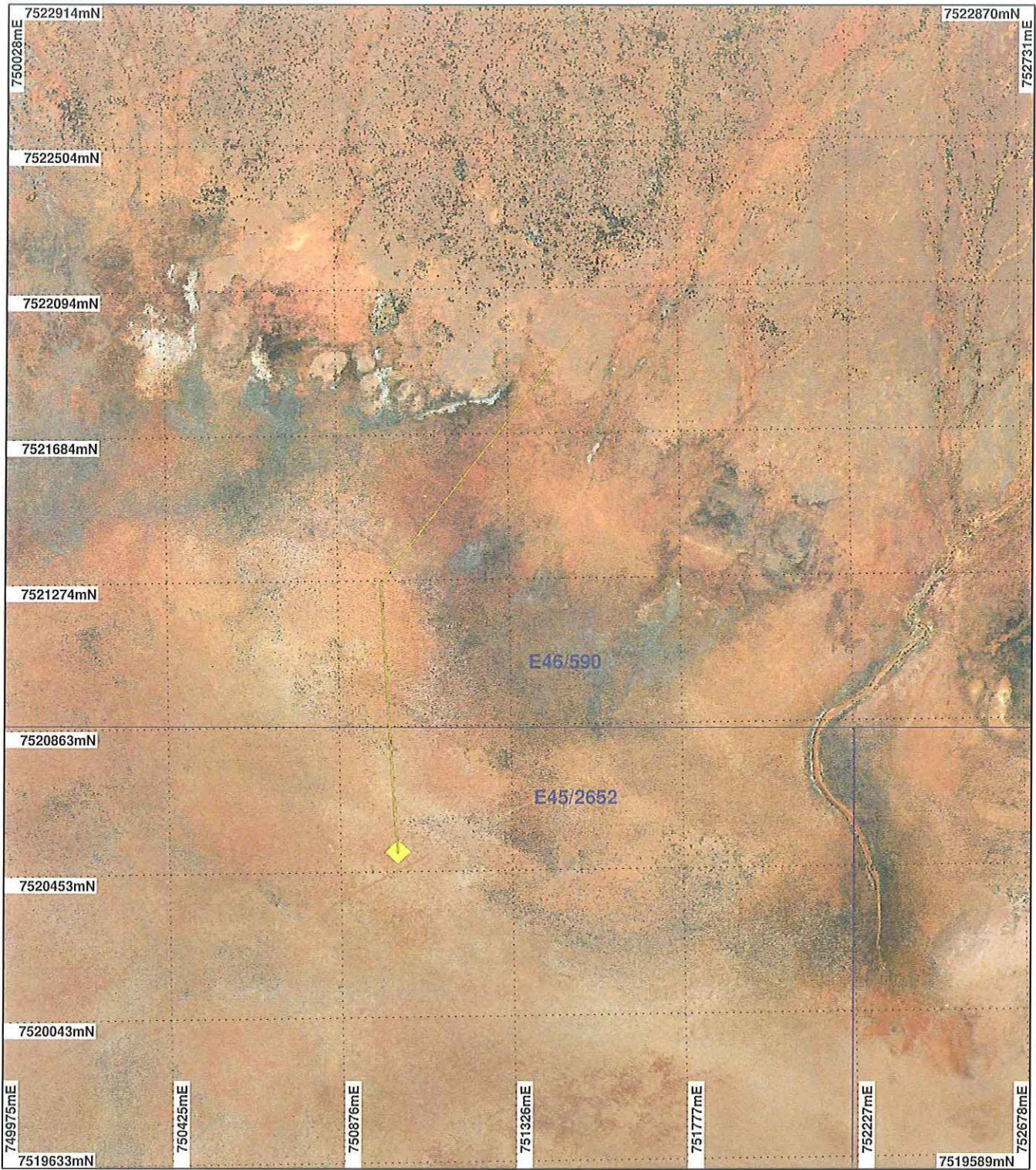
PHIL GOREY Date 23/9/2010

Officer with delegated authority under Section 20 of the Environmental Protection Act 1986

Information derived from this map should be confirmed with the data custodian acknowledged by the agency acronym in the legend.



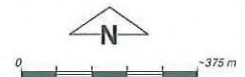
# PLAN 3828/1 L



## LEGEND

- Mining Tenements
- Clearing Instruments
- Areas Approved to Clear
- Clearing Instruments\_1
- Areas Subject to Conditions

Mount Marsh 50cm  
Orthomosaic - Landgate  
2008



Scale 1:15000

(Approximate when reproduced at A4)

Geocentric Datum Australia 1994

Note: the data in this map have not been projected. This may result in geometric distortion or measurement inaccuracies.

PHIL GOREY

Date 23/9/2010

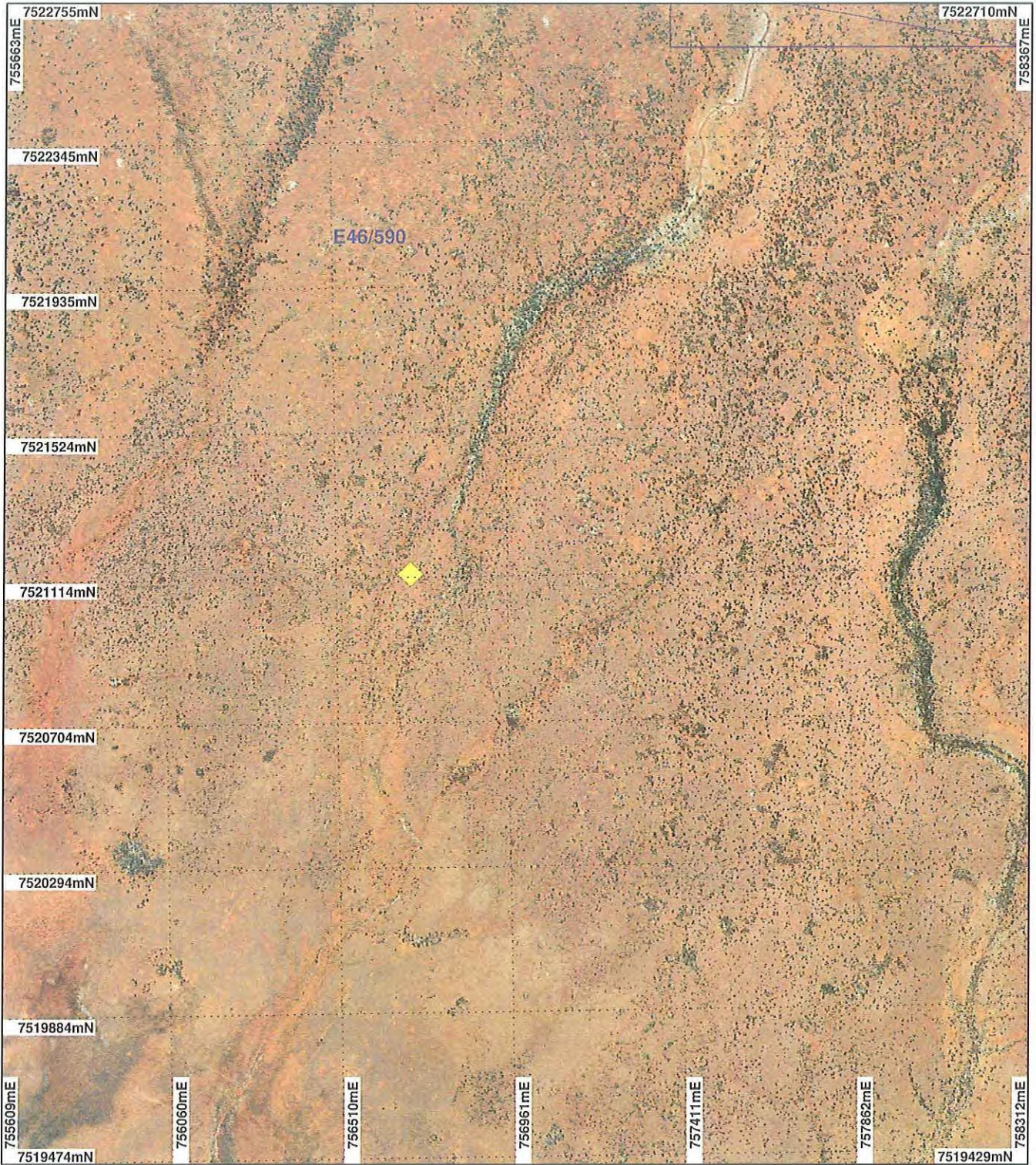
Officer with delegated authority under Section 20 of the Environmental Protection Act 1986

Information derived from this map should be confirmed with the data custodian acknowledged by the agency acronym in the legend.



WA Crown Copyright 2002

# PLAN 3828/1 M



## LEGEND

- Mining Tenements
- Clearing Instruments
- Areas Approved to Clear
- Clearing Instruments\_1
- Areas Subject to Conditions

Mount Marsh 50cm  
Orthomosaic - Landgate  
2008



Scale 1:15000

(Approximate when reproduced at A4)

Geocentric Datum Australia 1994

Note: the data in this map have not been projected. This may result in geometric distortion or measurement inaccuracies.

PHIL GOREY Date 23/9/2010

Officer with delegated authority under Section 20 of the Environmental Protection Act 1986

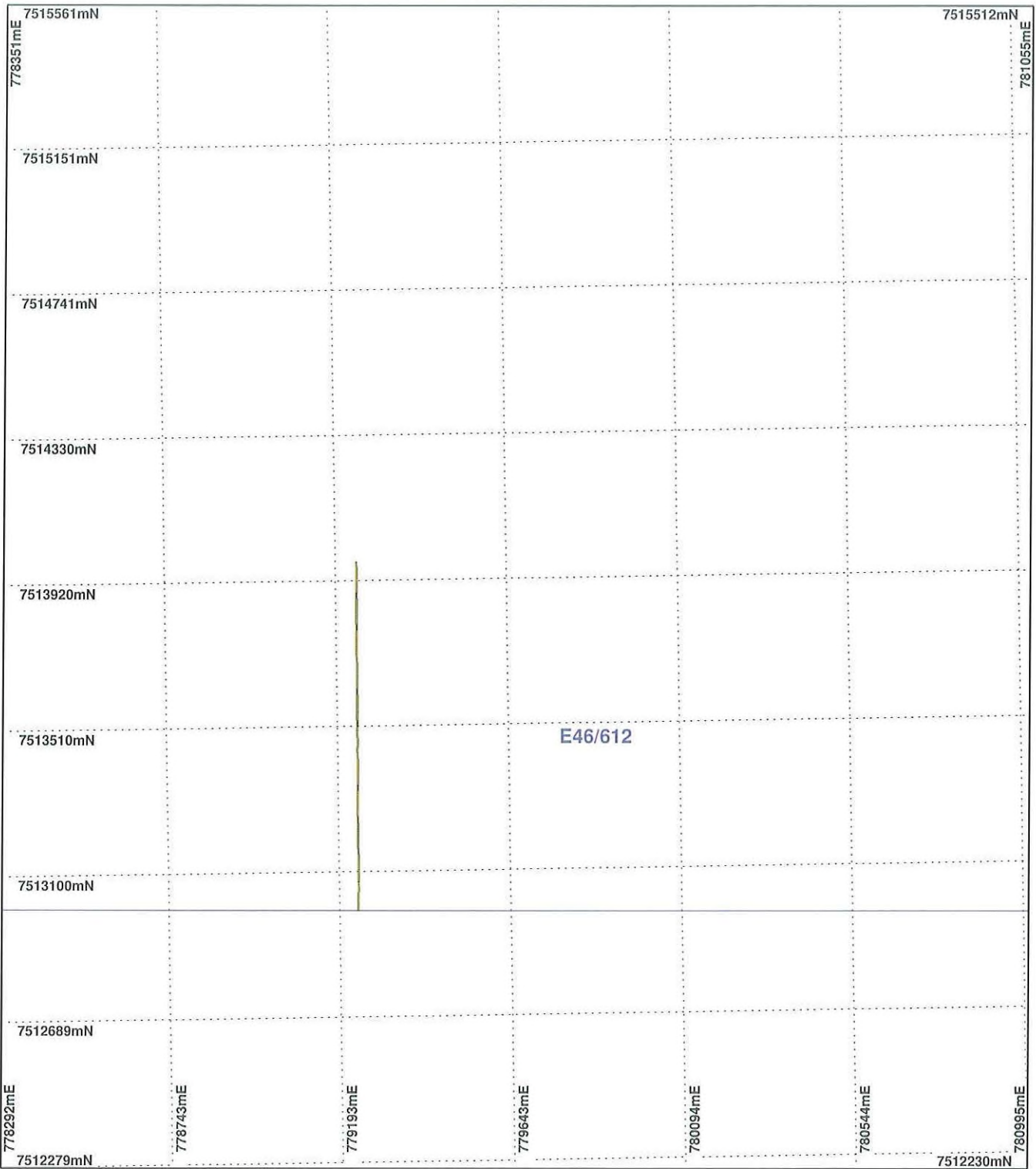
Information derived from this map should be confirmed with the data custodian acknowledged by the agency acronym in the legend.



WA Crown Copyright 2002

\* Project Data. This data has not been quality assured. Please contact map author for details.

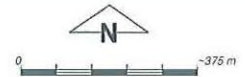
# PLAN 3828/1 N



## LEGEND

- Mining Tenements
- Clearing Instruments
- Areas Approved to Clear
- Clearing Instruments\_1
- Areas Subject to Conditions

Roy Hill 50cm Orthomosaic -  
Landgate 2004



Scale 1:15000

(Approximate when reproduced at A4)

Geocentric Datum Australia 1994

Note: the data in this map have not been projected. This may result in geometric distortion or measurement inaccuracies.

PHIL GOREY

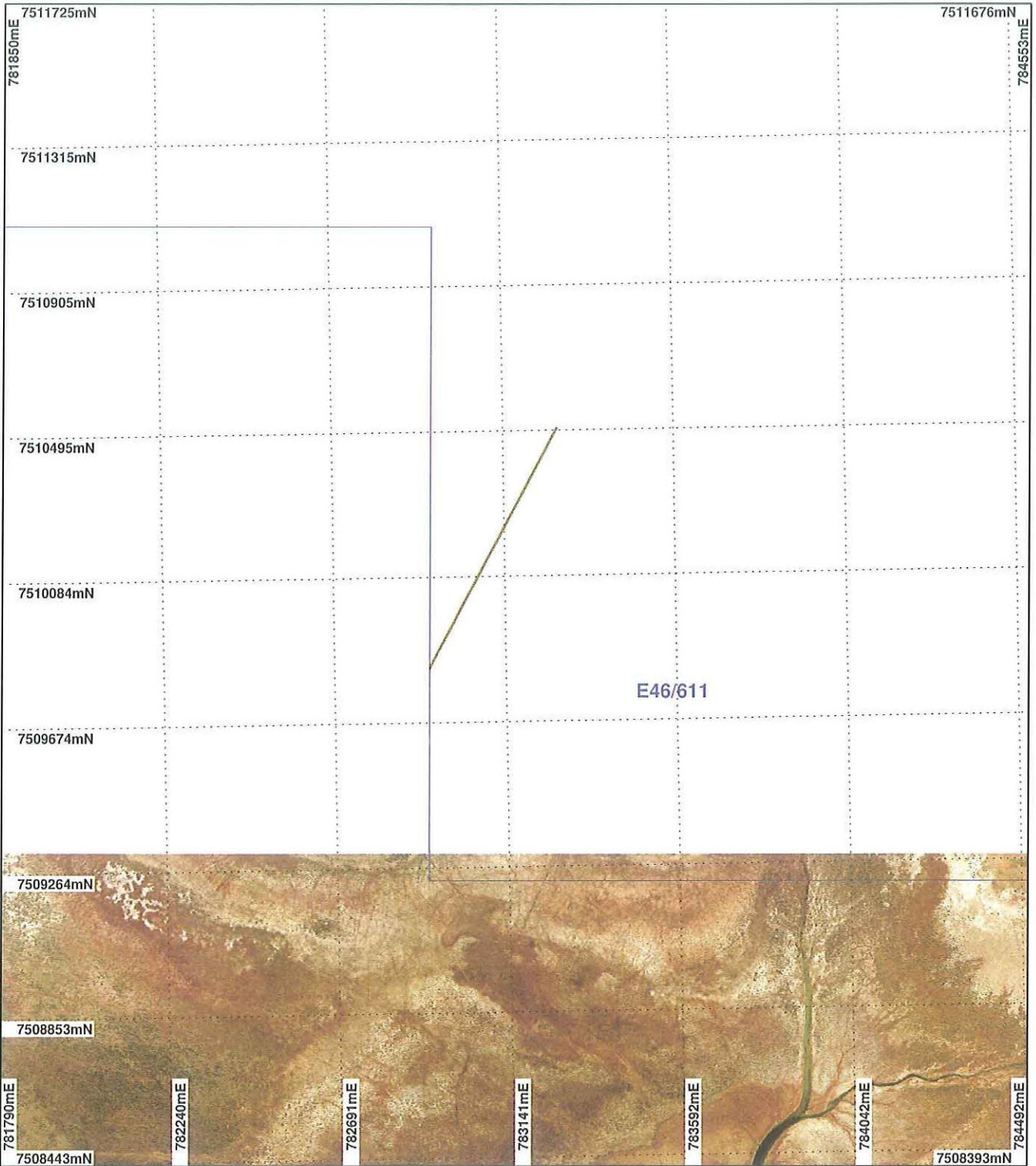
Officer with delegated authority under Section 20 of the Environmental Protection Act 1986

Information derived from this map should be confirmed with the data custodian acknowledged by the agency acronym in the legend.



WA Crown Copyright 2002

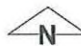
# PLAN 3828/1 O



**LEGEND**

- Mining Tenements
- Clearing Instruments
- Areas Approved to Clear
- Clearing Instruments\_1
- Areas Subject to Conditions

Roy Hill 50cm Orthomosaic - Landgate 2004



0 -375 m

Scale 1:15000  
(Approximate when reproduced at A4)


Geocentric Datum Australia 1994

*Note: the data in this map have not been projected. This may result in geometric distortion or measurement inaccuracies.*

..... Date 23/9/2010

**PHIL GOREY**  
Officer with delegated authority under Section 20 of the Environmental Protection Act 1986

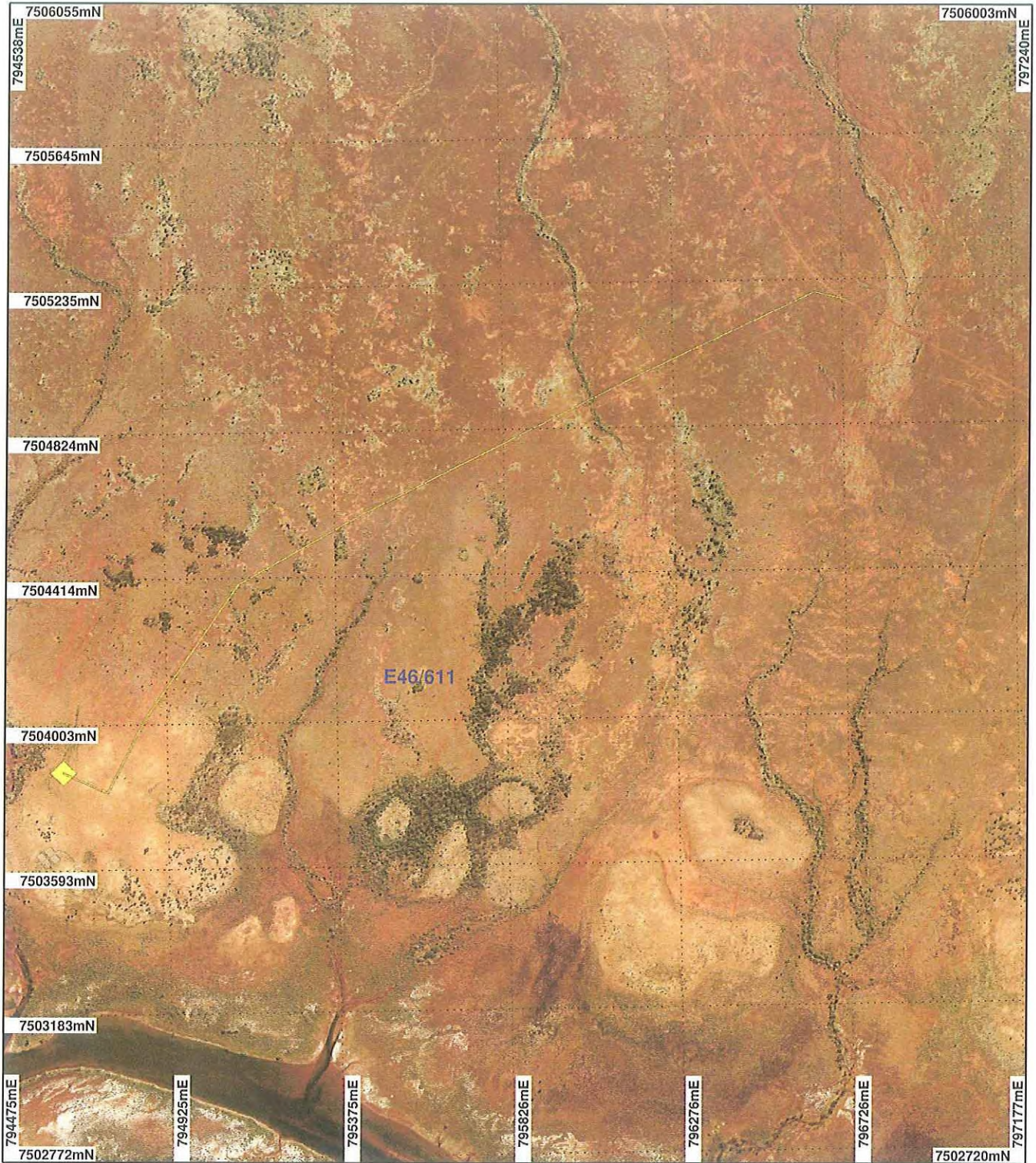
Information derived from this map should be confirmed with the data custodian acknowledged by the agency acronym in the legend.



WA Crown Copyright 2002

\* Project Data. This data has not been quality assured. Please contact map author for details.

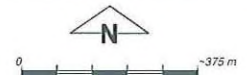
# PLAN 3828/1 P



## LEGEND

- Mining Tenements
- Clearing Instruments
- Areas Approved to Clear
- Clearing Instruments\_1
- Areas Subject to Conditions

Roy Hill 50cm Orthomosaic -  
Landgate 2004



Scale 1:15000

(Approximate when reproduced at A4)

Geocentric Datum Australia 1994

Note: the data in this map have not been projected. This may result in geometric distortion or measurement inaccuracies.

PHIL GOREY

Date

23/9/2010

Officer with delegated authority under Section 20 of the Environmental Protection Act 1986

Information derived from this map should be confirmed with the data custodian acknowledged by the agency acronym in the legend.



WA Crown Copyright 2002