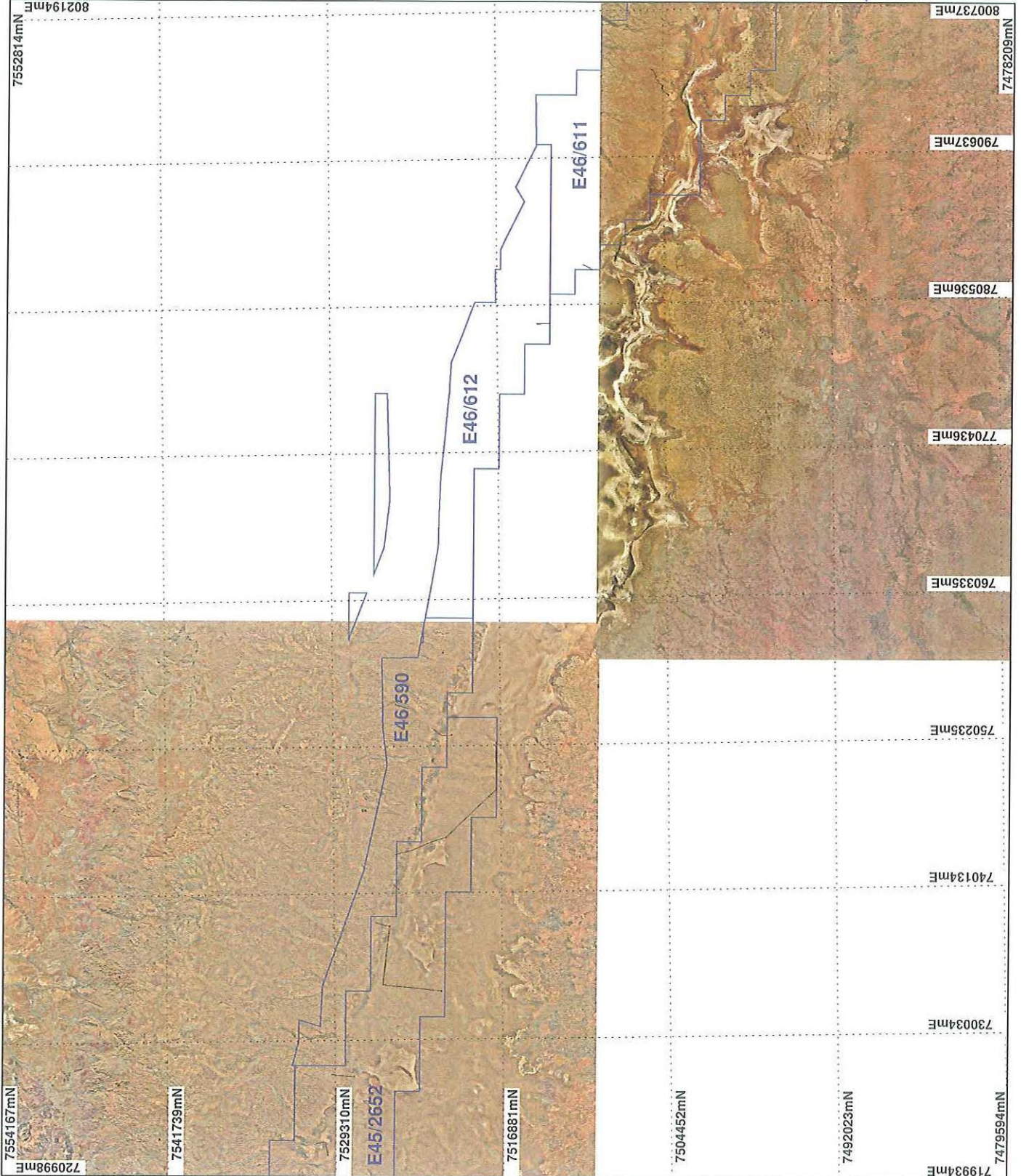


PLAN 3828/2 A



LEGEND

- Mining Tenements
- Clearing Instruments
- Areas Approved to Clear
- Clearing Instruments_1
- Areas Subject to Conditions
- Mount Marsh 50cm Orthomosaic - Landgate 2008**
- Roy Hill 50cm Orthomosaic - Landgate 2004**

* Project Data. This data has not been quality assured. Please contact map author for details.



0 10 km

Scale 1:375000

(Approximate when reproduced at A4)

Geocentric Datum Australia 1994

Note: the data in this map have not been projected. This may result in geometric distortion or measurement inaccuracies.

Date: 9/1/2010

PHIL COREY

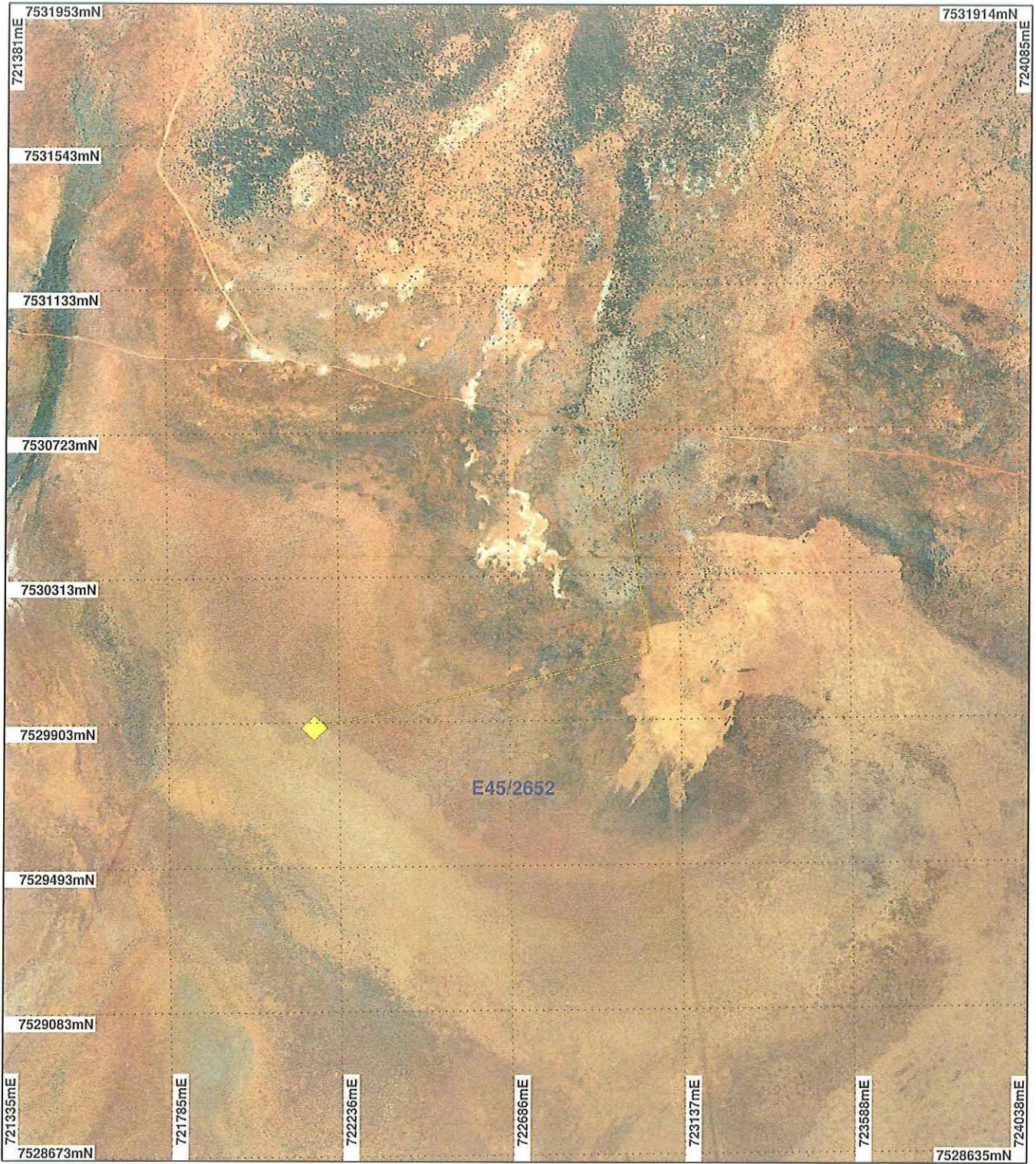
Officer with delegated authority under Section 20 of the Environmental Protection Act 1986

Information derived from this map should be confirmed with the data custodian as developed by the agency acronym in the legend.



WA Crown Copyright 2022

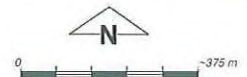
PLAN 3828/2 B



LEGEND

- Mining Tenements
- Clearing Instruments
- Areas Approved to Clear
- Clearing Instruments_1
- Areas Subject to Conditions

Mount Marsh 50cm
Orthomosaic - Landgate
2008



Scale 1:15000

(Approximate when reproduced at A4)

Geocentric Datum Australia 1994

Note: the data in this map have not been projected. This may result in geometric distortion or measurement inaccuracies.

Phil Gorey Date *4/1/2008*
PHIL GOREY

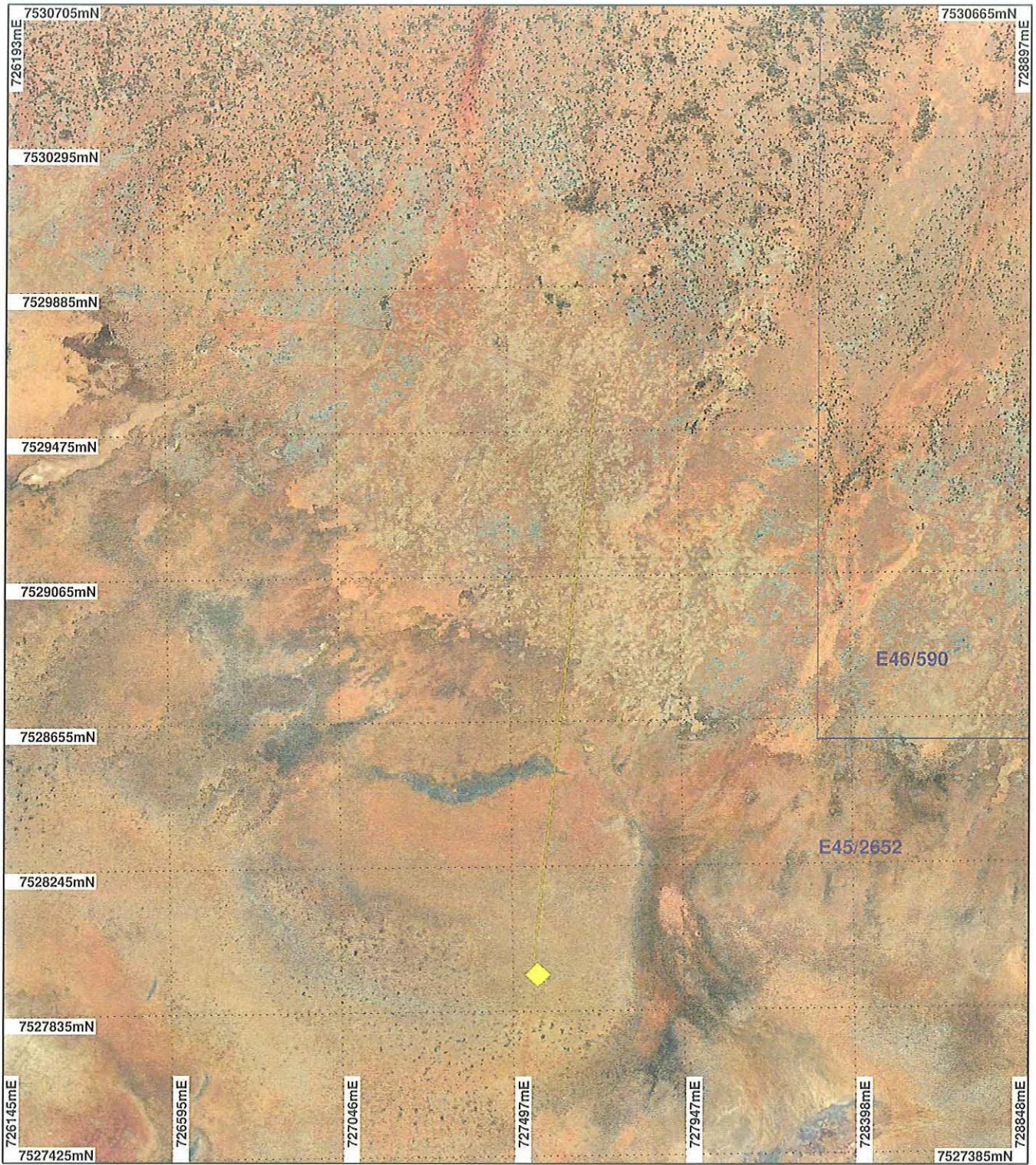
Officer with delegated authority under Section 20 of the Environmental Protection Act 1986

Information derived from this map should be confirmed with the data custodian acknowledged by the agency acronym in the legend.



WA Crown Copyright 2002

PLAN 3828/2 C



LEGEND

- Mining Tenements
- Clearing Instruments
- Areas Approved to Clear
- Clearing Instruments_1
- Areas Subject to Conditions

Mount Marsh 50cm
Orthomosaic - Landgate
2008



0 ~375 m

Scale 1:15000

(Approximate when reproduced at A4)

Geocentric Datum Australia 1994

Note: the data in this map have not been projected. This may result in geometric distortion or measurement inaccuracies.

PHIL GOREY

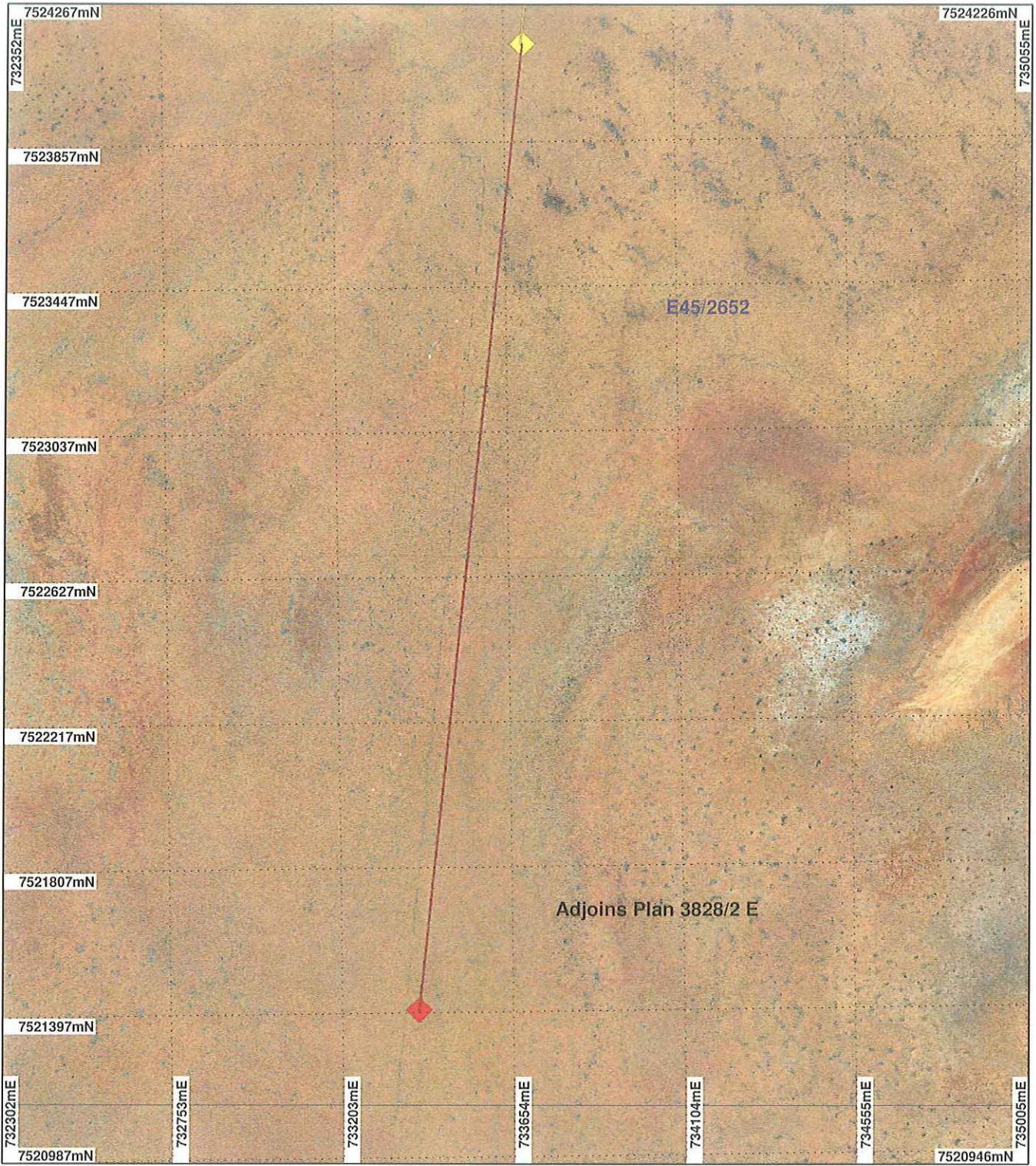
Officer with delegated authority under Section 20 of the Environmental Protection Act 1986

Information derived from this map should be confirmed with the data custodian acknowledged by the agency acronym in the legend.



WA Crown Copyright 2002

PLAN 3828/2 D



LEGEND

- Mining Tenements
- Clearing Instruments
- Areas Approved to Clear
- Areas Subject to Conditions

Mount Marsh 50cm
Orthomosaic - Landgate
2008



0 -375 m

Scale 1:15000

(Approximate when reproduced at A4)

Geocentric Datum Australia 1994

Note: the data in this map have not been projected. This may result in geometric distortion or measurement inaccuracies.

Date 4/11/2010

PHIL GOREY
Officer with delegated authority under Section 20 of
the Environmental Protection Act 1986

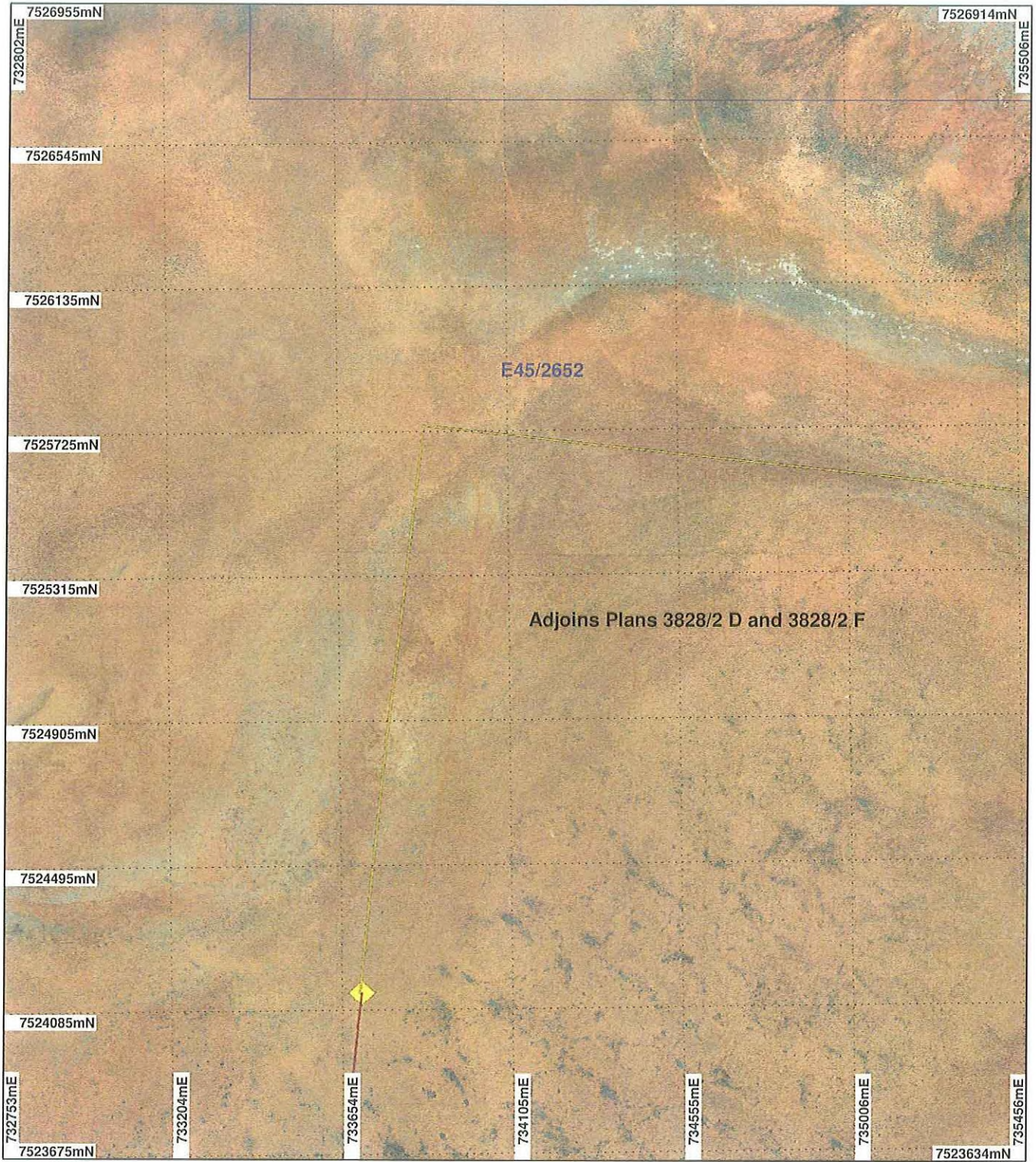
Information derived from this map should be
confirmed with the data custodian acknowledged
by the agency acronym in the legend.



WA Crown Copyright 2002

* Project Data. This data has not been quality assured. Please contact map author for details.

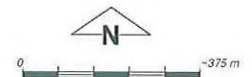
PLAN 3828/2 E



LEGEND

- Mining Tenements
- Clearing Instruments
- Areas Approved to Clear
- Clearing Instruments_1
- Areas Subject to Conditions

Mount Marsh 50cm
Orthomosaic - Landgate
2008



Scale 1:15000

(Approximate when reproduced at A4)

Geocentric Datum Australia 1994

Note: the data in this map have not been projected. This may result in geometric distortion or measurement inaccuracies.

PHIL GOREY

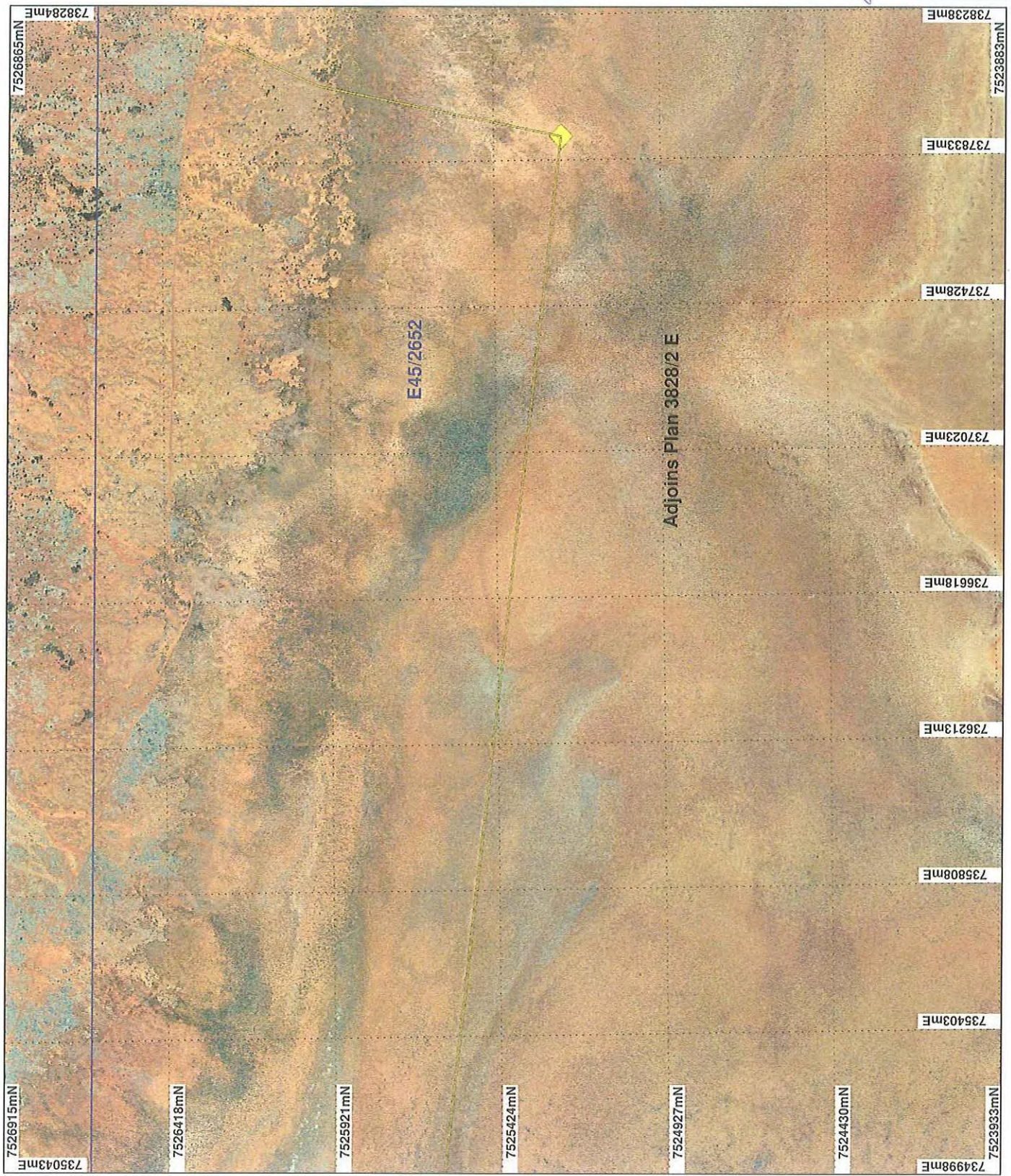
Officer with delegated authority under Section 20 of the Environmental Protection Act 1986

Information derived from this map should be confirmed with the data custodian acknowledged by the agency acronym in the legend.



WA Crown Copyright 2002

PLAN 3828/2 F



LEGEND

- Mining Tenements
- Clearing Instruments
- Areas Approved to Clear
- Clearing Instruments_1
- Areas Subject to Conditions
- Mount Marsh 50cm Orthomosaic - Landgate 2008

* Project Data. This data has not been quality assured. Please contact map author for details.



0 375 m

Scale 1:15000

(Approximate when reproduced at A4)

Geocentric Datum Australia 1994

Note: the data in this map have not been projected. This may result in geometric distortion or measurement inaccuracies.

PHIL GOREY Date 9/4/2010

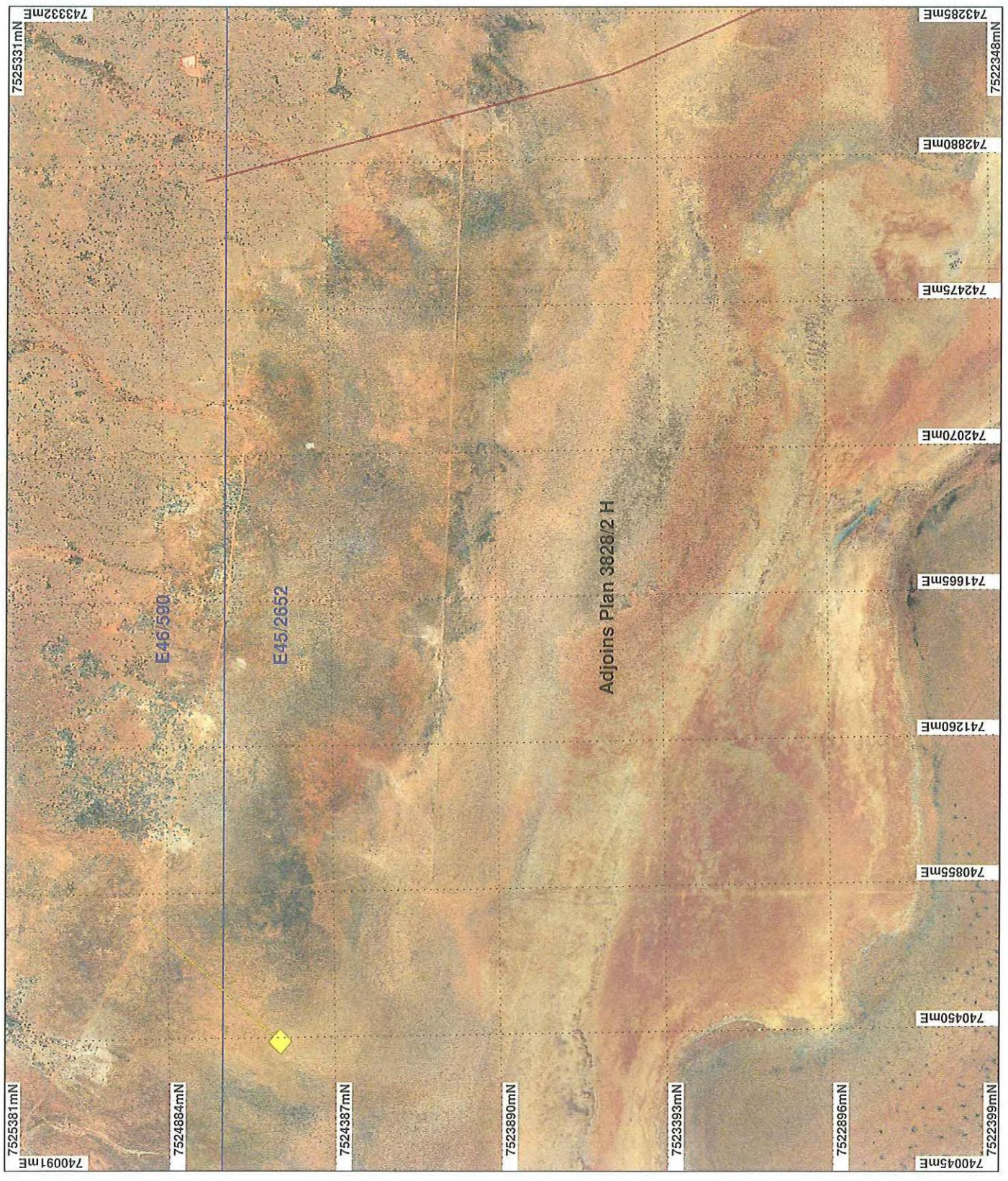
Officer with delegated authority under Section 20 of the Environmental Protection Act 1985

Information derived from this map should be confirmed with the data custodian acknowledged by the agency acronym in the legend.



WA Crown Copyright 2002

PLAN 3828/2 G



LEGEND

- Mining Tenements
 - Clearing Instruments
 - Areas Approved to Clear
 - Clearing Instruments_1
 - Areas Subject to Conditions
- Mount Marsh 50cm Orthomosaic -
Landgate 2008

* Project Data. This data has not been quality assured. Please contact map author for details.



0 375 m

Scale 1:15000
(Approximate when reproduced at A4)

Geocentric Datum Australia 1994

Note: the data in this map have not been projected. This may result in geometric distortion or measurement inaccuracies.

PHIL GOREY Date 9/11/2010

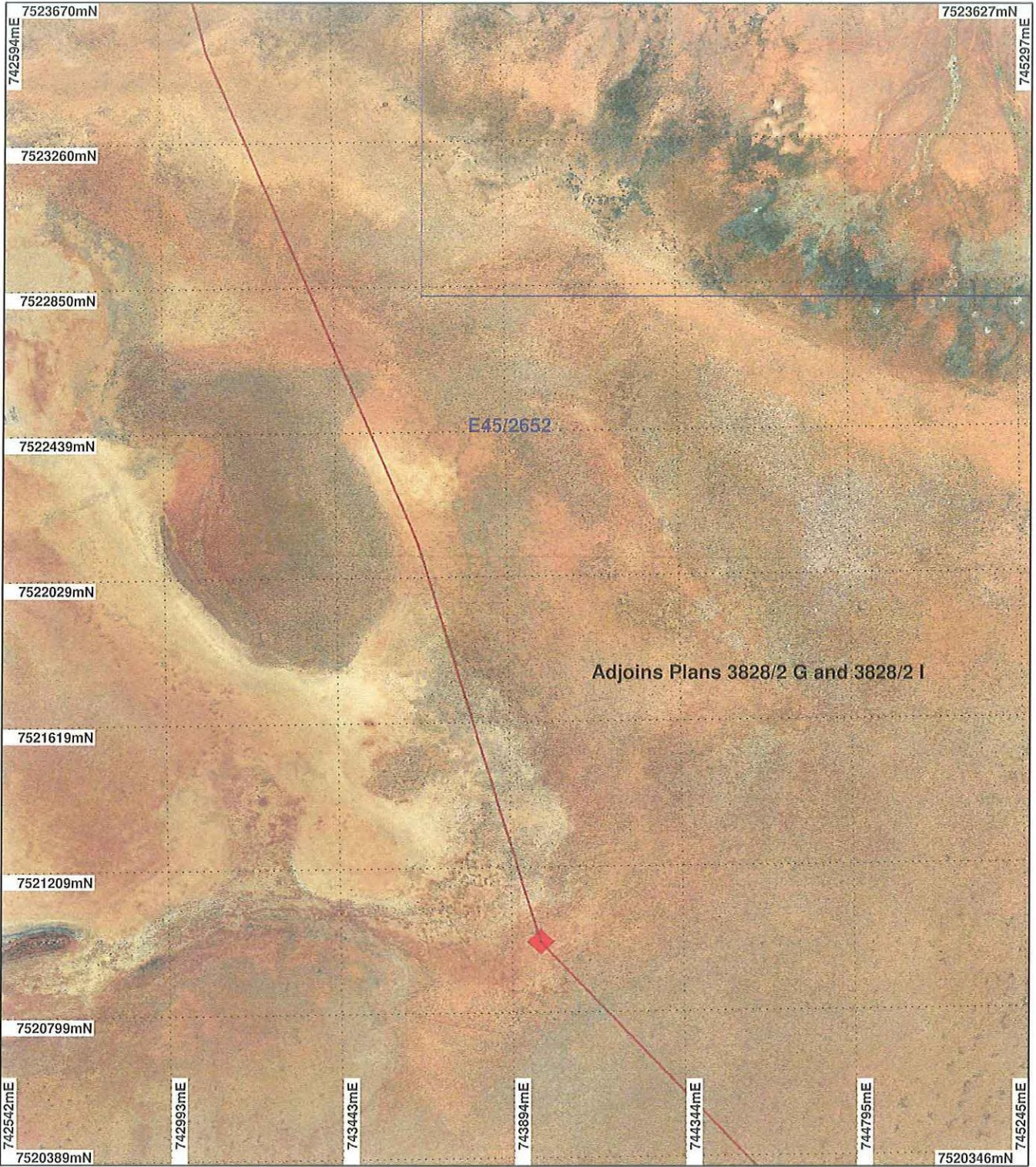
Officer with delegated authority under Section 20 of the Environmental Protection Act 1986

Information derived from this map should be confirmed with the data custodian acknowledged by the agency acronym in the legend.



WA Crown Copyright 2002

PLAN 3828/2 H



LEGEND

- Mining Tenements
- Clearing Instruments
- Areas Approved to Clear
- Clearing Instruments_1
- Areas Subject to Conditions

Mount Marsh 50cm
Orthomosaic - Landgate
2008



0 375 m

Scale 1:15000

(Approximate when reproduced at A4)

Geocentric Datum Australia 1994

Note: the data in this map have not been projected. This may result in geometric distortion or measurement inaccuracies.

PHIL GOREY

Date 9/4/2020

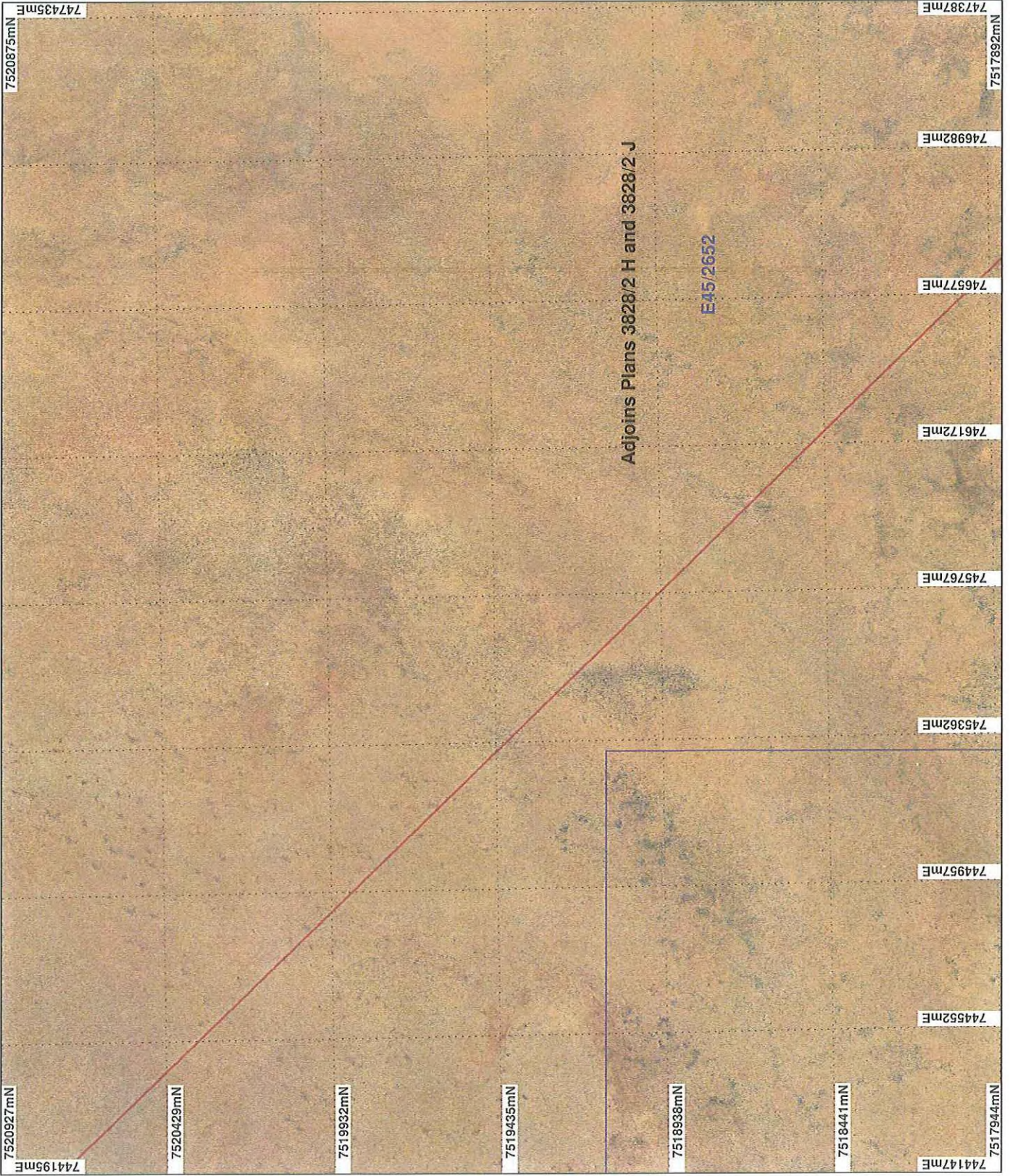
Officer with delegated authority under Section 20 of
the Environmental Protection Act 1986

Information derived from this map should be
confirmed with the data custodian acknowledged
by the agency acronym in the legend.



WA Crown Copyright 2002

PLAN 3828/2 I



LEGEND

- Mining Tenements
- Clearing Instruments
- Areas Approved to Clear
- Clearing Instruments_1
- Areas Subject to Conditions
- Mount Marsh 50cm Orthomosaic - Lanugate 2008

* Project Data. This data has not been quality assured. Please contact map author for details.



0 125m

Scale 1:15000

(Approximate when reproduced at A4)

Geocentric Datum Australia 1994

Note: the data in this map have not been projected. This may result in geometric distortion or measurement inaccuracies.

PHIL GOREY Date 9/11/2018

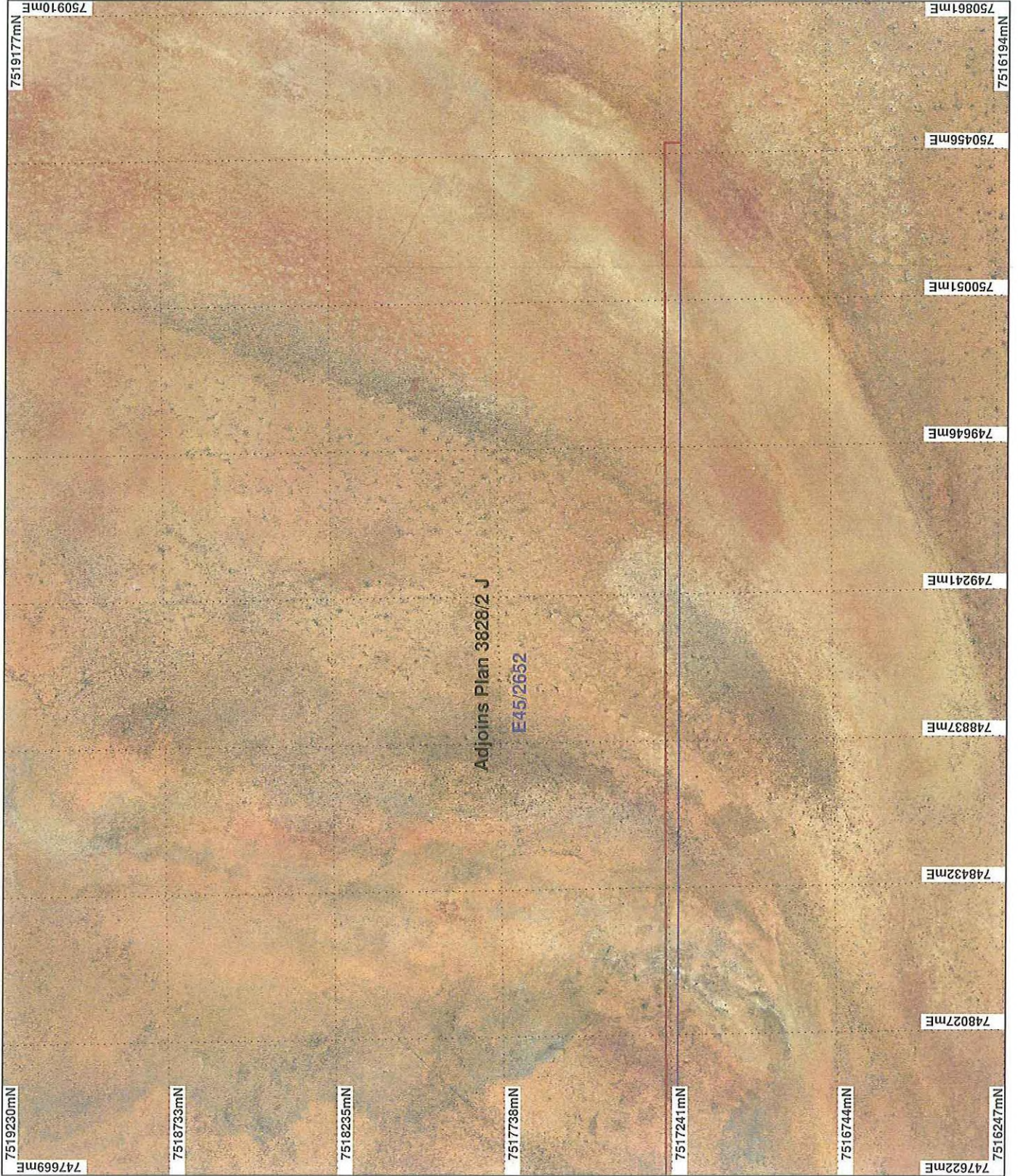
Information derived from this map should be confirmed with the data custodian acknowledged by the agency acronym in the legend.

Officer with delegated authority under Section 20 of the Environmental Protection Act 1986



WA Crown Copyright 2002

PLAN 3828/2 K



LEGEND

- Mining Tenements
 - Clearing Instruments
 - Areas Approved to Clear
 - Clearing Instruments_1
 - Areas Subject to Conditions
- Mount Marsh 50cm Orthomosaic -
Lanigate 2008

* Project Data. This data has not been quality assured. Please contact map author for details.



0 50m 100m

Scale 1:15000

(Approximate when reproduced at A4)

Geocentric Datum Australia 1994

Note: the data in this map have not been projected. This may result in geometric distortion or measurement inaccuracies.

PHIL GOREY

Date 24/12/20

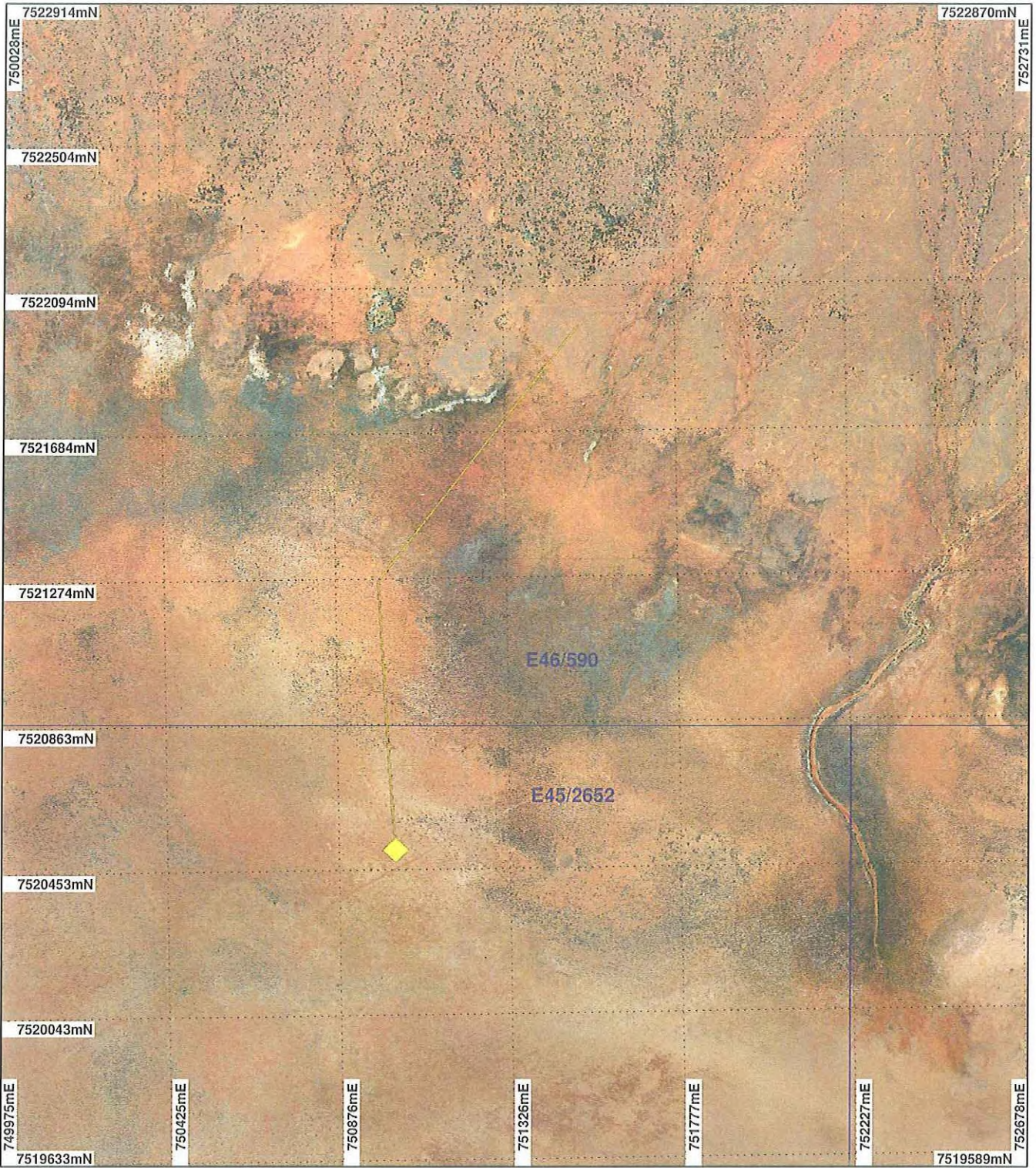
Officer with delegated authority under Section 20 of the Environmental Protection Act 1986

Information derived from this map should be confirmed with the data custodian, as acknowledged by the agency acronym in the legend.



WA Crown Copyright 2002

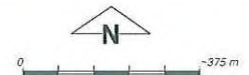
PLAN 3828/2 L



LEGEND

- Mining Tenements
- Clearing Instruments
- Areas Approved to Clear
- Clearing Instruments_1
- Areas Subject to Conditions

Mount Marsh 50cm
Orthomosaic - Landgate
2008



Scale 1:15000

(Approximate when reproduced at A4)

Geocentric Datum Australia 1994

Note: the data in this map have not been projected. This may result in geometric distortion or measurement inaccuracies.

PHIL GOREY

Date 4/11/2010

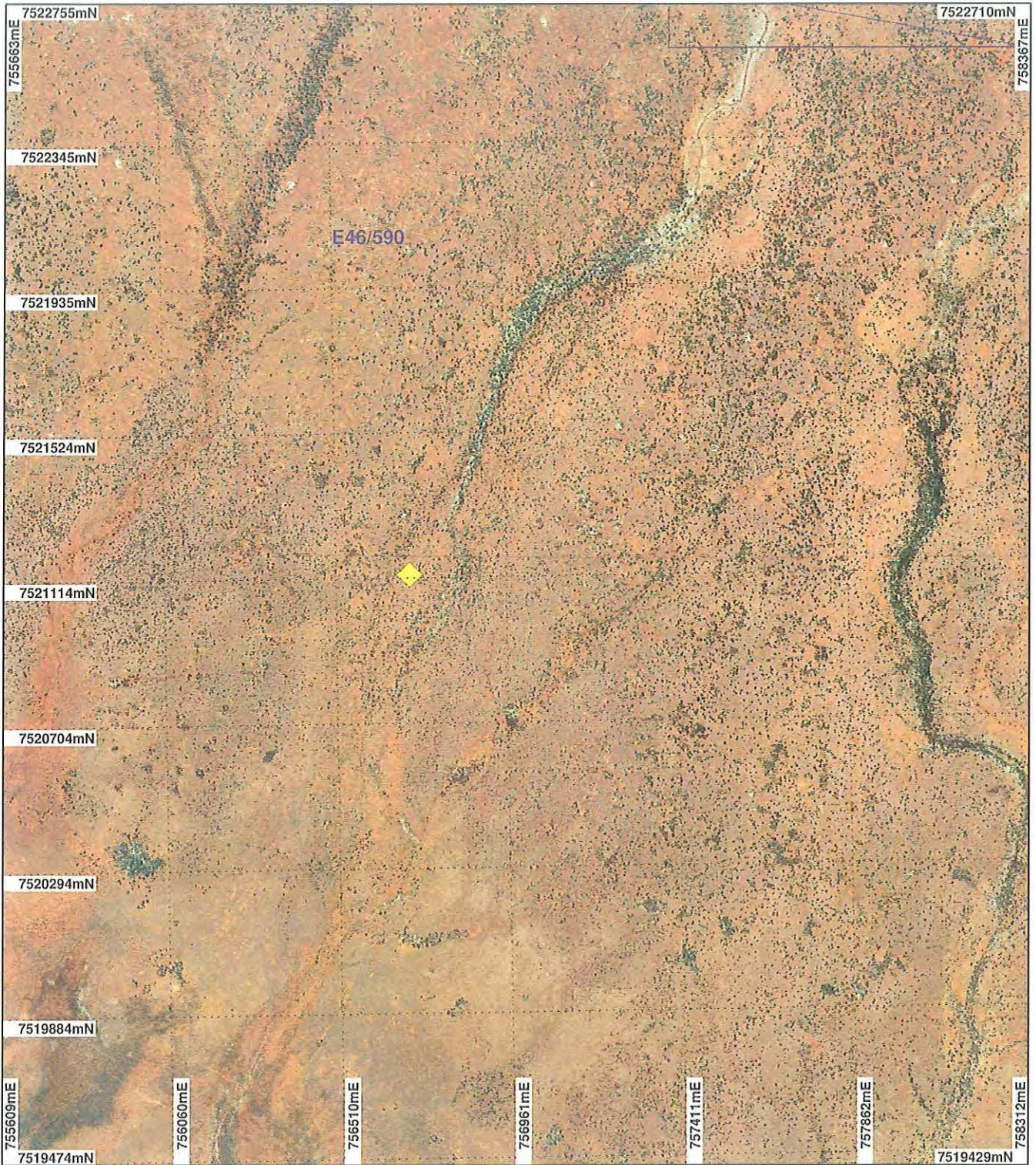
Officer with delegated authority under Section 20 of the Environmental Protection Act 1986

Information derived from this map should be confirmed with the data custodian acknowledged by the agency acronym in the legend.



WA Crown Copyright 2002

PLAN 3828/2 M



LEGEND

- Mining Tenements
- Clearing Instruments
- Areas Approved to Clear
- Clearing Instruments_1
- Areas Subject to Conditions

Mount Marsh 50cm
Orthomosaic - Landgate
2008



Scale 1:15000
(Approximate when reproduced at A4)

Geocentric Datum Australia 1994

Note: the data in this map have not been projected. This may result in geometric distortion or measurement inaccuracies.

Date 4/1/2008

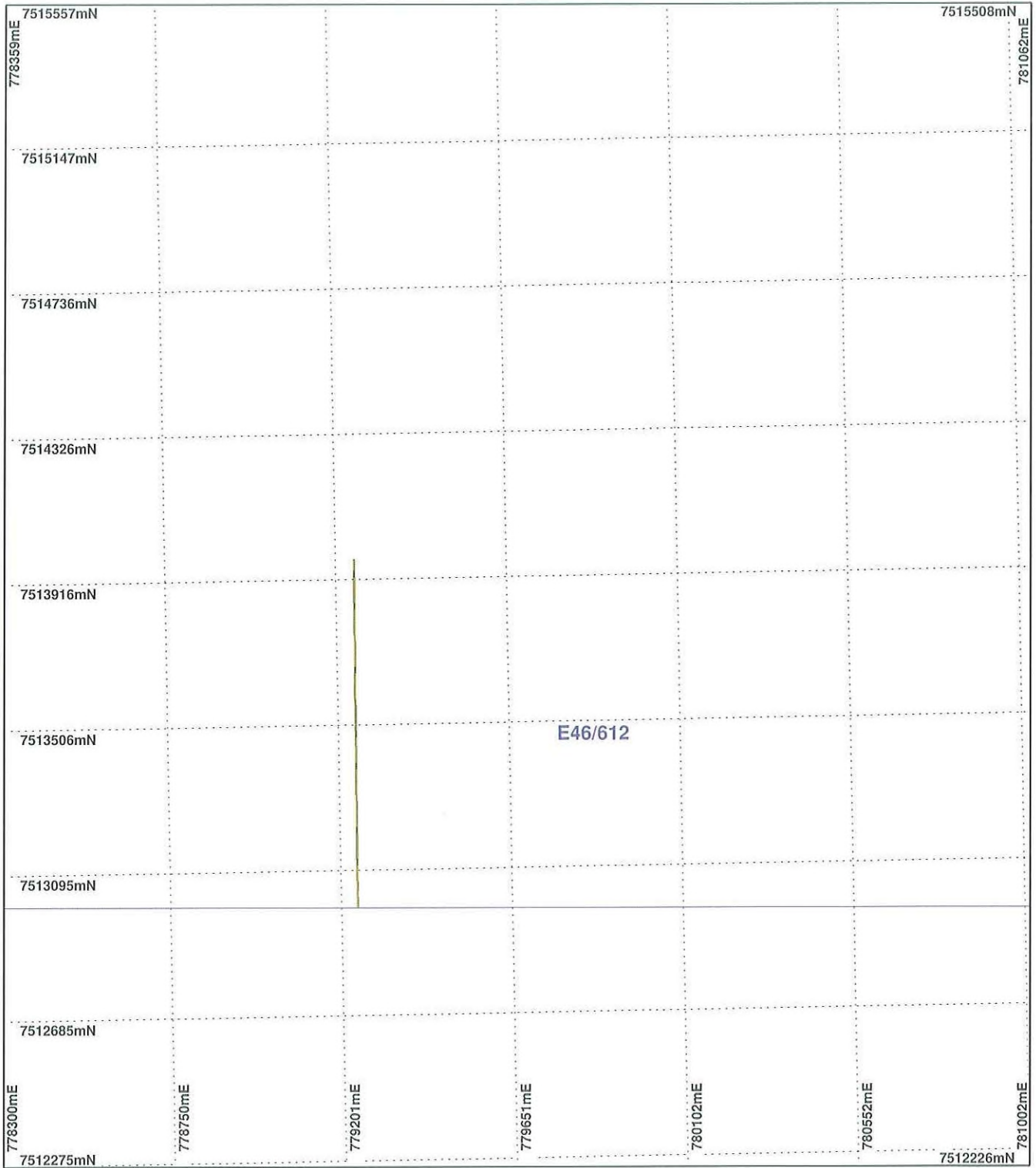
PHIL COREY
Officer with delegated authority under Section 20 of the Environmental Protection Act 1986

Information derived from this map should be confirmed with the data custodian acknowledged by the agency acronym in the legend.



WA Crown Copyright 2002

PLAN 3828/2 N



LEGEND

- Mining Tenements
- Clearing Instruments
- Areas Approved to Clear
- Clearing Instruments_1
- Areas Subject to Conditions

Roy Hill 50cm Orthomosaic -
Landgate 2004



Scale 1:15000

(Approximate when reproduced at A4)

Geocentric Datum Australia 1994

Note: the data in this map have not been projected. This may result in geometric distortion or measurement inaccuracies.

PHIL GOREY

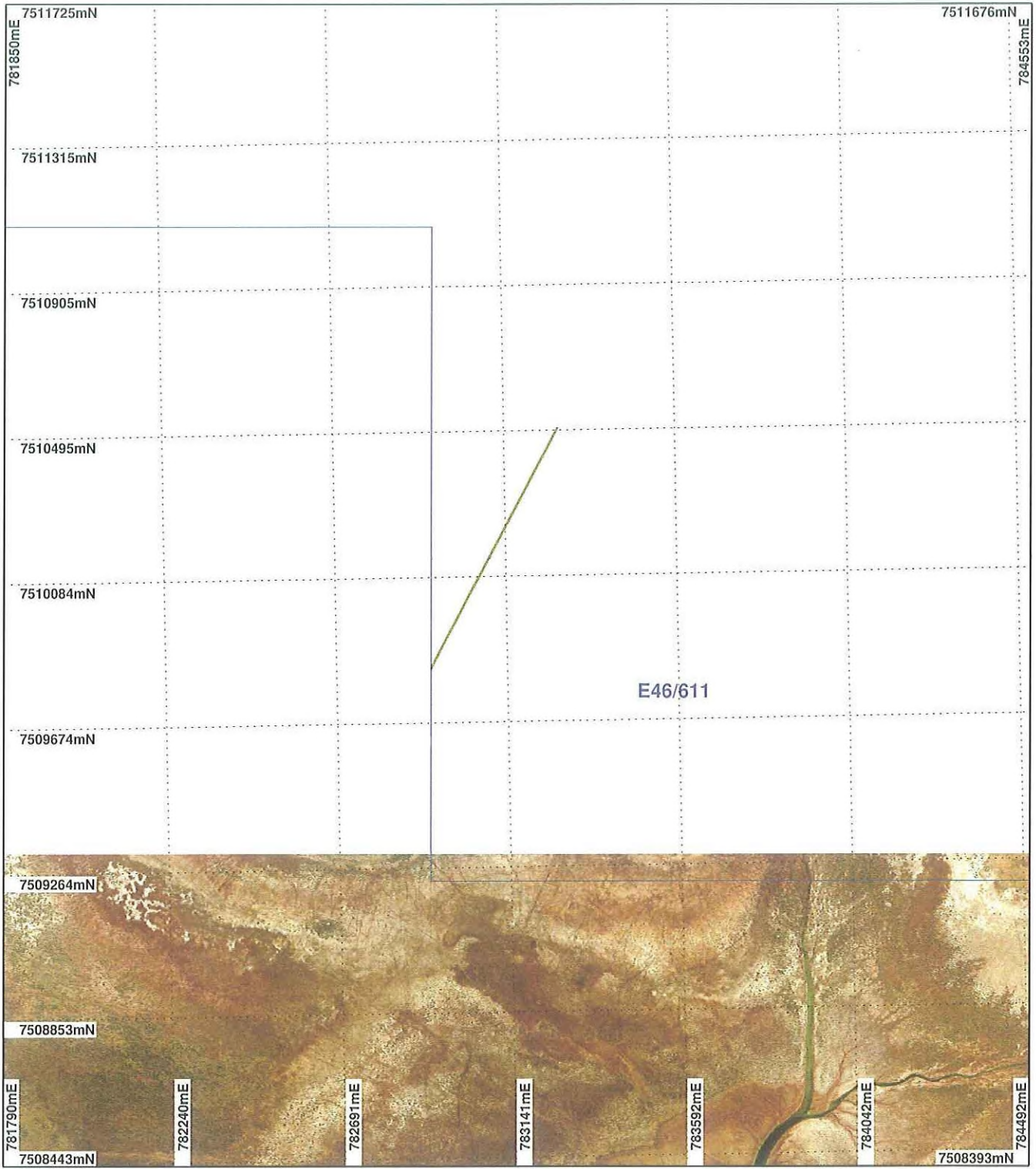
Officer with delegated authority under Section 20 of the Environmental Protection Act 1986

Information derived from this map should be confirmed with the data custodian acknowledged by the agency acronym in the legend.



WA Crown Copyright 2002

PLAN 3828/2 O



LEGEND

- Mining Tenements
- Clearing Instruments
- Areas Approved to Clear
- Clearing Instruments_1
- Areas Subject to Conditions

Roy Hill 50cm Orthomosaic -
Landgate 2004



Scale 1:15000
(Approximate when reproduced at A4)

Geocentric Datum Australia 1994

Note: the data in this map have not been projected. This may result in geometric distortion or measurement inaccuracies.

 Date 9/11/2010

PHIL GOREY
Officer with delegated authority under Section 20 of
the Environmental Protection Act 1986

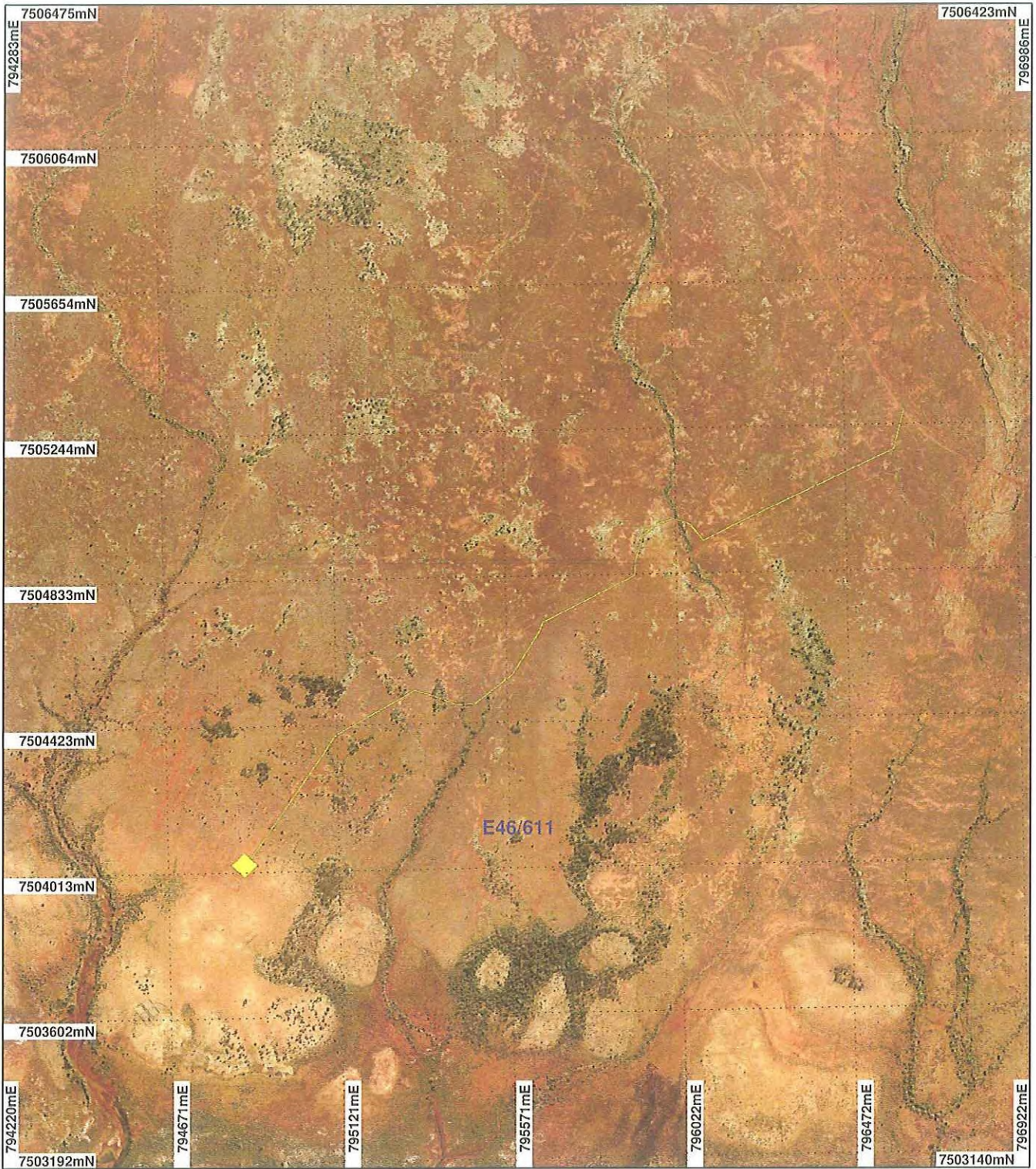
Information derived from this map should be confirmed with the data custodian acknowledged by the agency acronym in the legend.



WA Crown Copyright 2002.

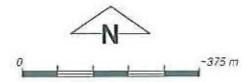
* Project Data. This data has not been quality assured. Please contact map author for details.

PLAN 3828/2 P



LEGEND

- | | |
|---|--|
| <input type="checkbox"/> Mining Tenements | <input type="checkbox"/> Clearing Instruments_1 |
| <input type="checkbox"/> Clearing Instruments | <input type="checkbox"/> Areas Subject to Conditions |
| <input checked="" type="checkbox"/> Areas Approved to Clear | |
| Roy Hill 50cm Orthomosaic - Landgate 2004 | |



Scale 1:15000
(Approximate when reproduced at A4)

Geocentric Datum Australia 1994

Note: the data in this map have not been projected. This may result in geometric distortion or measurement inaccuracies.

Date: 4/11/2018
 PHIL GOREY
 Officer with delegated authority under Section 20 of the Environmental Protection Act 1986

Information derived from this map should be confirmed with the data custodian acknowledged by the agency acronym in the legend.



WA Crown Copyright 2002