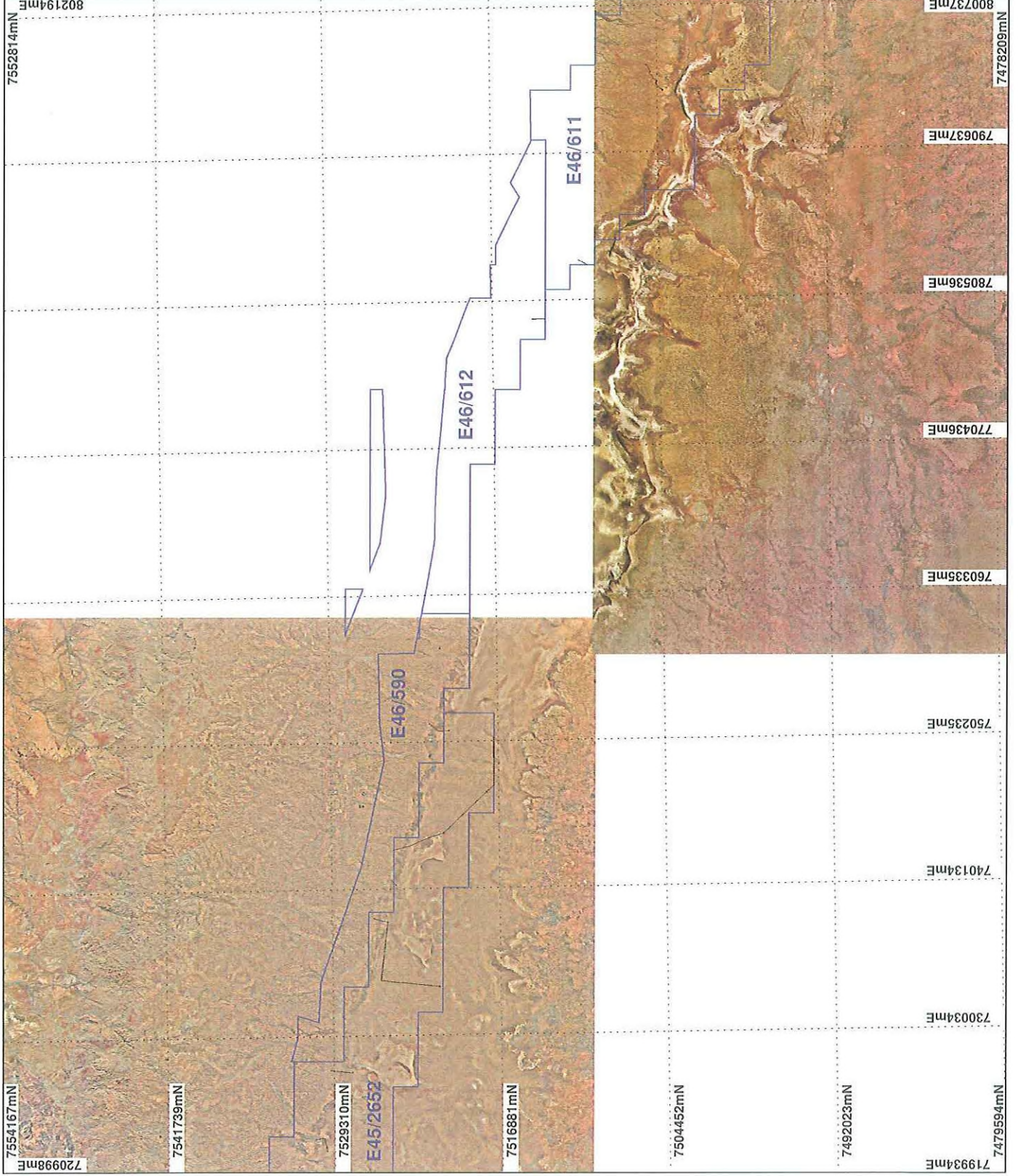


PLAN 3828/3 A



LEGEND

- Mining Tenements
- Clearing Instruments
- Areas Approved to Clear
- Clearing Instruments_1
- Areas Subject to Conditions
- Mount Marsh 50cm Orthomosaic - Landgate 2008
- Roy Hill 50cm Orthomosaic - Landgate 2004

* Project Data. This data has not been quality assured. Please contact map author for details.



0 10 km

Scale 1:375000
(Approximate when reproduced at A4)

Geocentric Datum Australia 1994

Note: the data in this map have not been projected. This may result in geometric distortion or measurement inaccuracies.

VIRGINIA SIMMS Date 23/12/13

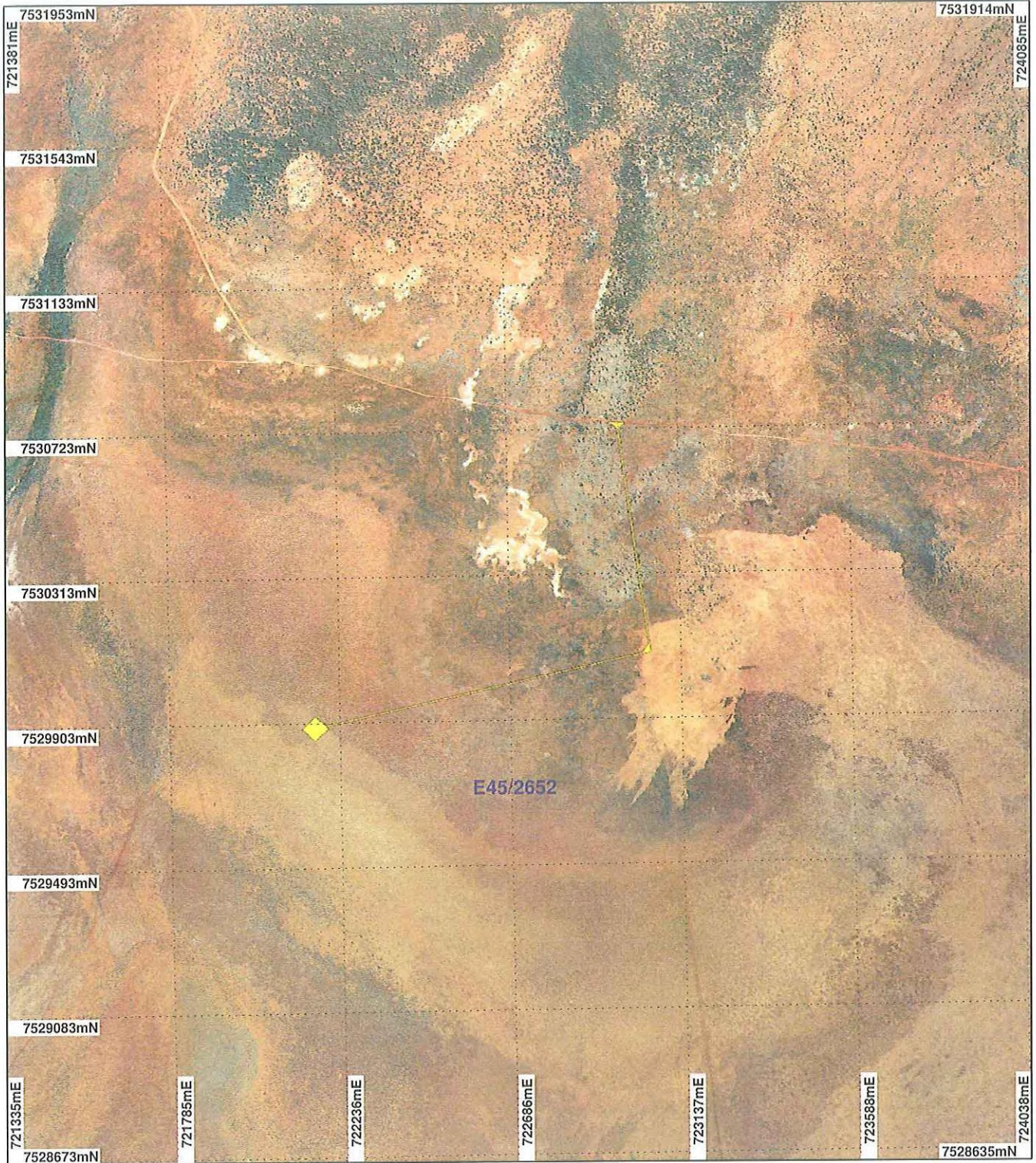
Officer with delegated authority under Section 20 of the Environmental Protection Act 1986

Information derived from this map should be confirmed with the data custodian acknowledged by the agency acronym in the legend.



WA Crown Copyright 2002

PLAN 3828/3 B



LEGEND

- Mining Tenements
- Clearing Instruments
- Areas Approved to Clear
- Clearing Instruments_1
- Areas Subject to Conditions

Mount Marsh 50cm
Orthomosaic - Landgate
2008



Scale 1:15000
(Approximate when reproduced at A4)

Geocentric Datum Australia 1994

Note: the data in this map have not been projected. This may result in geometric distortion or measurement inaccuracies.

Virginia Simms Date 23/12/10
VIRGINIA SIMMS

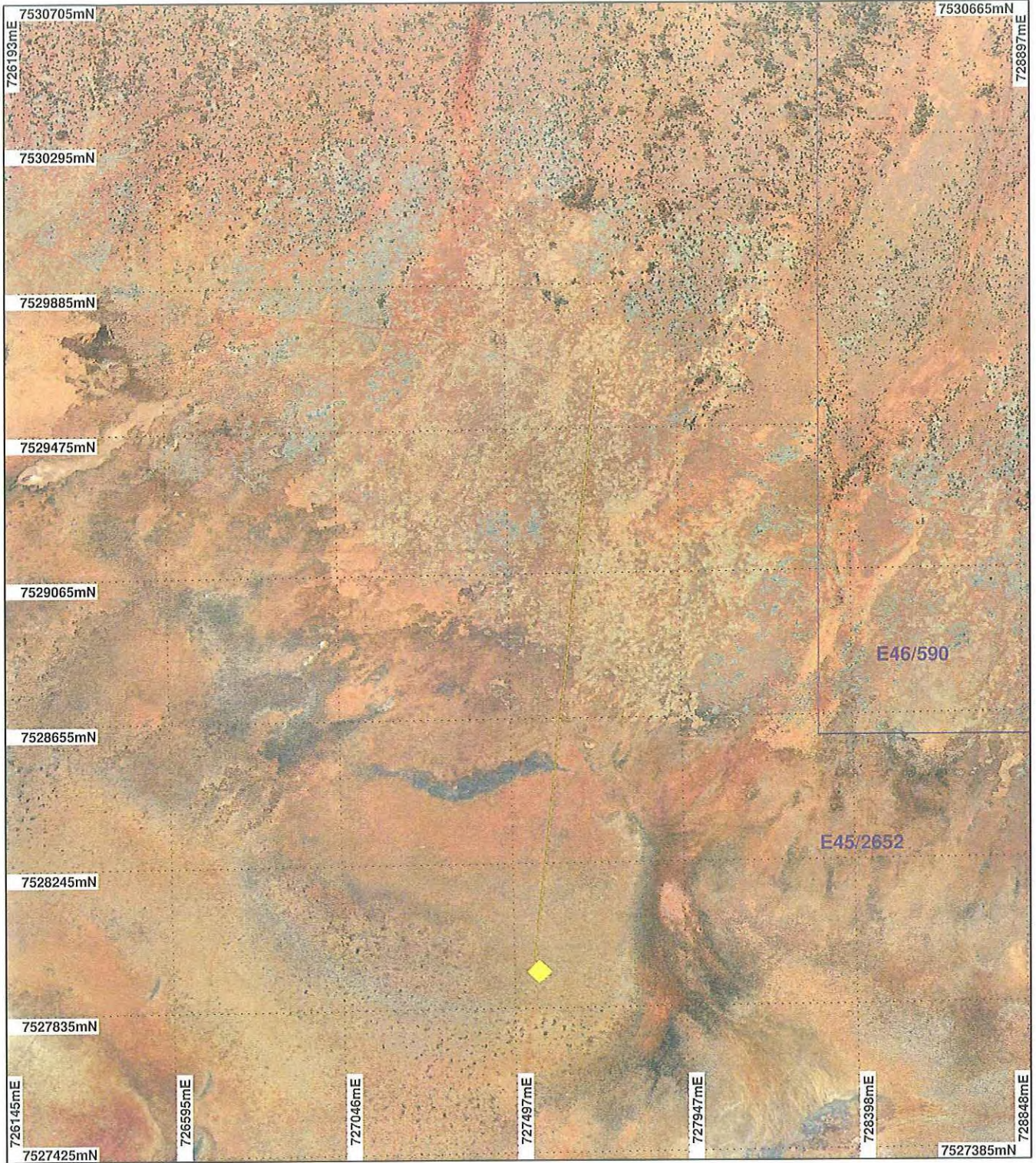
Officer with delegated authority under Section 20 of
the Environmental Protection Act 1986

Information derived from this map should be
confirmed with the data custodian acknowledged
by the agency acronym in the legend.



WA Crown Copyright 2002

PLAN 3828/3 C



LEGEND

- Mining Tenements
- Clearing Instruments
- Areas Approved to Clear
- Areas Subject to Conditions

Mount Marsh 50cm
Orthomosaic - Landgate
2008



0 -375 m

Scale 1:15000

(Approximate when reproduced at A4)

Geocentric Datum Australia 1994

Note: the data in this map have not been projected. This may result in geometric distortion or measurement inaccuracies.

Virginia Simms Date 23/10/10
VIRGINIA SIMMS

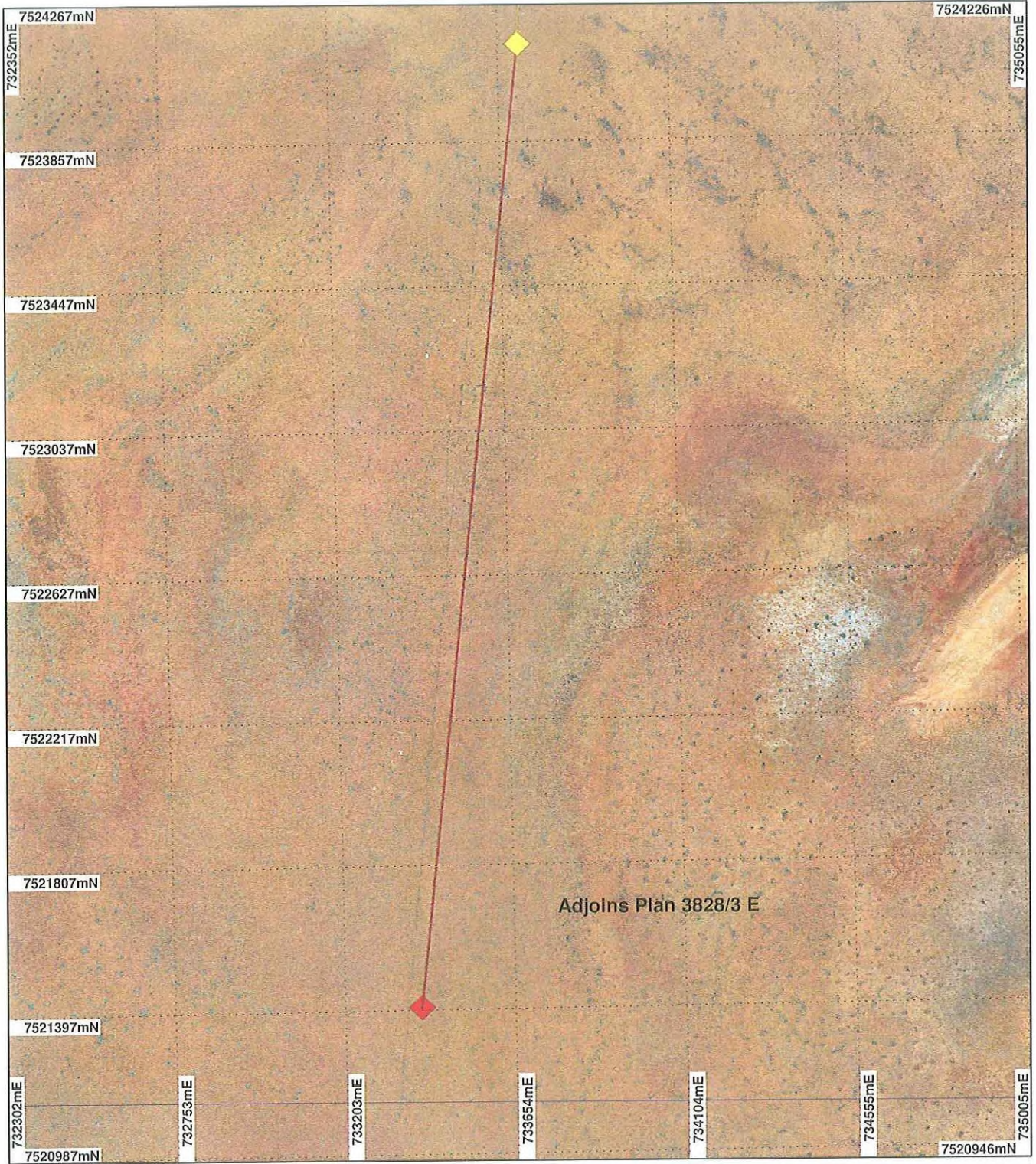
Officer with delegated authority under Section 20 of
the Environmental Protection Act 1986

Information derived from this map should be
confirmed with the data custodian acknowledged
by the agency acronym in the legend.



WA Crown Copyright 2002

PLAN 3828/3 D



LEGEND

- Mining Tenements
- Clearing Instruments
- Areas Subject to Conditions Clearing Instruments_1
- Areas Approved to Clear

Mount Marsh 50cm
Orthomosaic - Landgate
2008



0 ————— 375 m

Scale 1:15000

(Approximate when reproduced at A4)

Geocentric Datum Australia 1994

Note: the data in this map have not been projected. This may result in geometric distortion or measurement inaccuracies.

Virginia Simms Date 23/12/10
VIRGINIA SIMMS

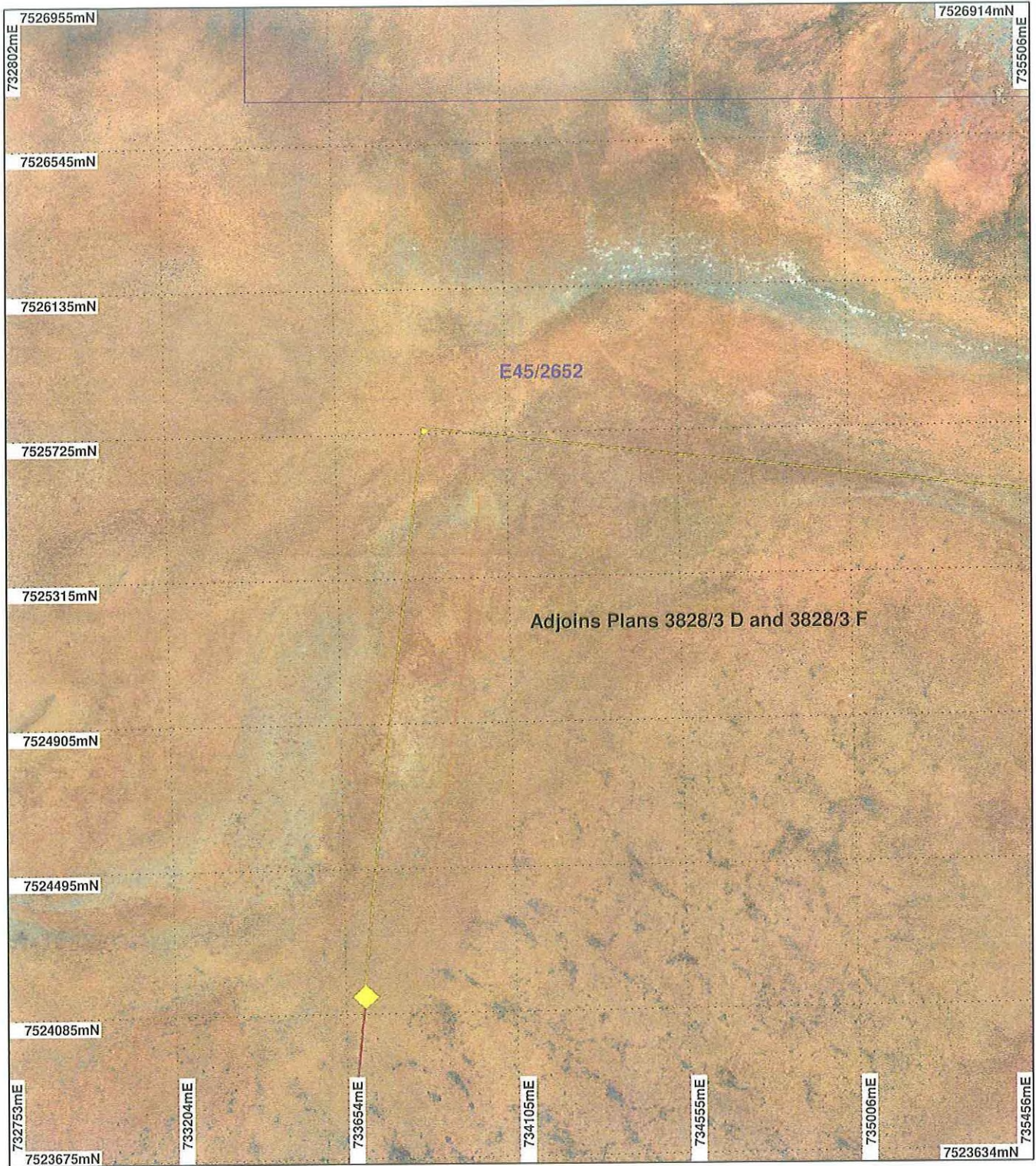
Officer with delegated authority under Section 20 of the Environmental Protection Act 1986

Information derived from this map should be confirmed with the data custodian acknowledged by the agency acronym in the legend.



WA Crown Copyright 2002

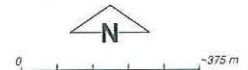
PLAN 3828/3 E



LEGEND

- Mining Tenements
- Clearing Instruments
- Areas Subject to Conditions Clearing Instruments_1
- Areas Approved to Clear

Mount Marsh 50cm
Orthomosaic - Landgate
2008



Scale 1:15000

(Approximate when reproduced at A4)

Geocentric Datum Australia 1994

Note: the data in this map have not been projected. This may result in geometric distortion or measurement inaccuracies.

Virginia Simms Date 23/12/10
VIRGINIA SIMMS

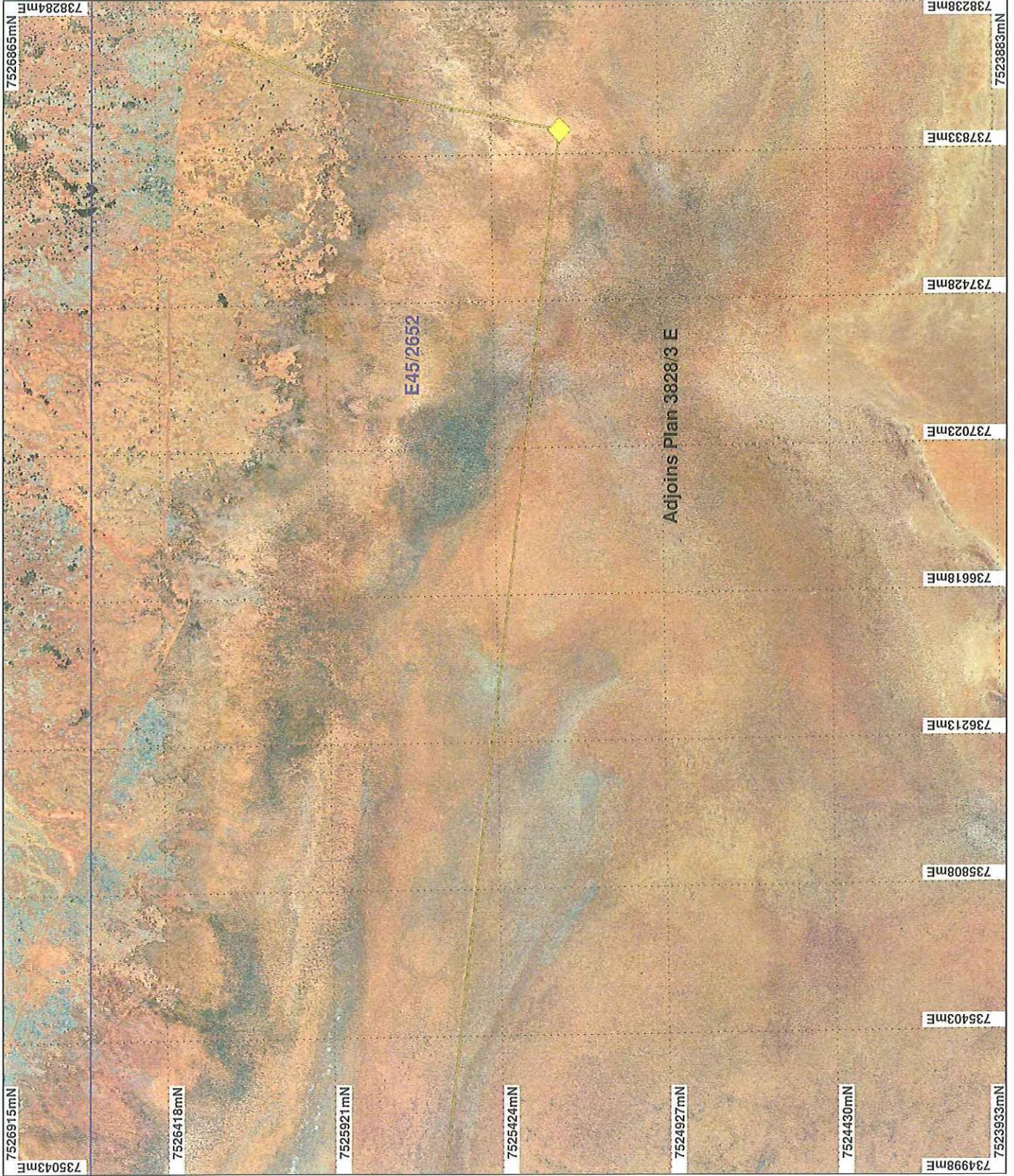
Officer with delegated authority under Section 20 of the Environmental Protection Act 1986

Information derived from this map should be confirmed with the data custodian acknowledged by the agency acronym in the legend.



WA Crown Copyright 2002

PLAN 3828/3 F



LEGEND

- Mining Tenements
- Clearing Instruments
- Areas Subject to Conditions
- Clearing Instruments_1
- Areas Approved to Clear
- Aerial March 50cm Orthomosaic - Landgate 2008

* Project Data. This data has not been quality assured. Please contact map author for details.



Scale 1:15000
(Approximate when reproduced at A4)

Geocentric Datum Australia 1994

Note: the data in this map have not been projected. This may result in geometric distortion or measurement inaccuracies.

Virginia Simms
Date 23/12/10

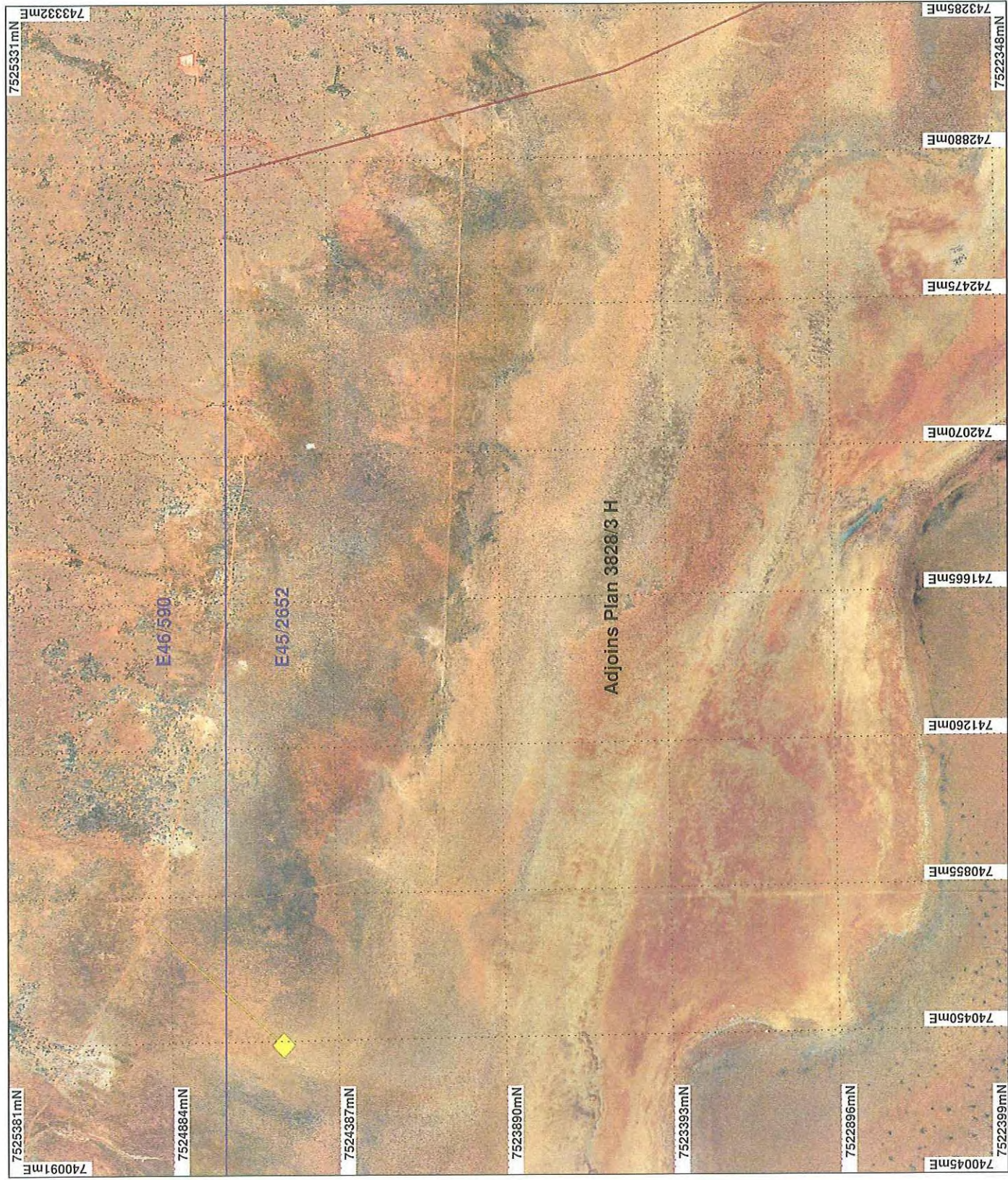
VIRGINIA SIMMS

Officer with delegated authority under Section 20 of the Environmental Protection Act 1986
Information derived from this map should be confirmed with the data custodian acknowledged by the agency acronym in the legend.



WA Crown Copyright 2002

PLAN 3828/3 G



LEGEND

- Mining Tenements
- Clearing Instruments
- Areas Subject to Conditions
- Clearing Instruments_1
- Areas Approved to Clear
- Mount Marsh 50cm Orthomosaic - Landgate 2008

* Project Data. This data has not been quality assured. Please contact map author for details.



Scale 1:15000
(Approximate when reproduced at A4)

Geocentric Datum Australia 1994

Note: the data in this map have not been projected. This may result in geometric distortion or measurement inaccuracies.

Virginia Simms Date 23/2/10

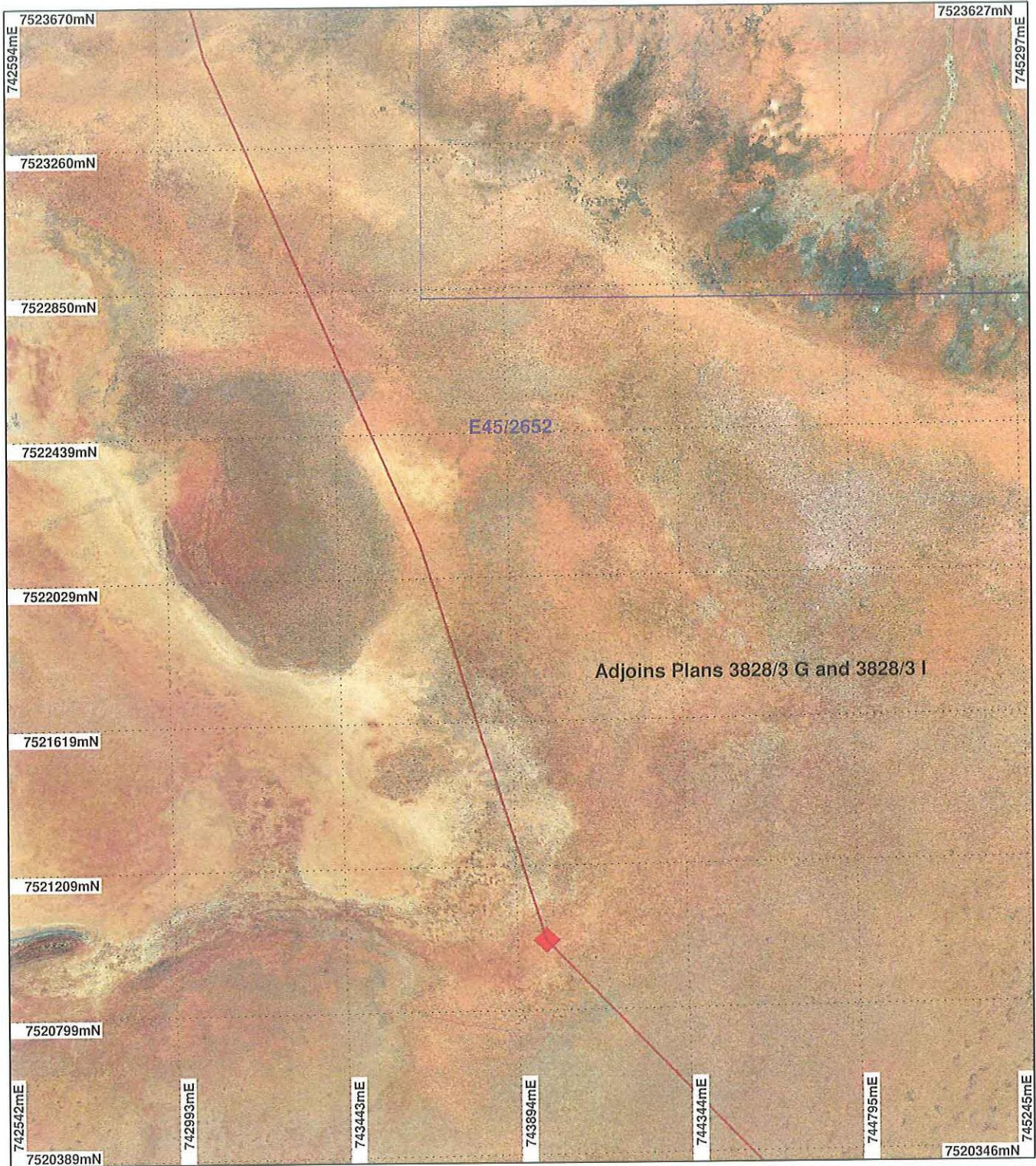
VIRGINIA SIMMS

Officer with delegated authority under Section 20 of the Environmental Protection Act 1986
Information derived from this map should be confirmed with the data custodian acknowledged by the agency acronym in the legend.



WA Crown Copyright 2002

PLAN 3828/3 H



LEGEND

- Mining Tenements
- Clearing Instruments
- Areas Approved to Clear
- Areas Subject to Conditions

Mount Marsh 50cm
Orthomosaic - Landgate
2008



Scale 1:15000

(Approximate when reproduced at A4)

Geocentric Datum Australia 1994

Note: the data in this map have not been projected. This may result in geometric distortion or measurement inaccuracies.

Virginia Simms Date 25/12/10
VIRGINIA SIMMS

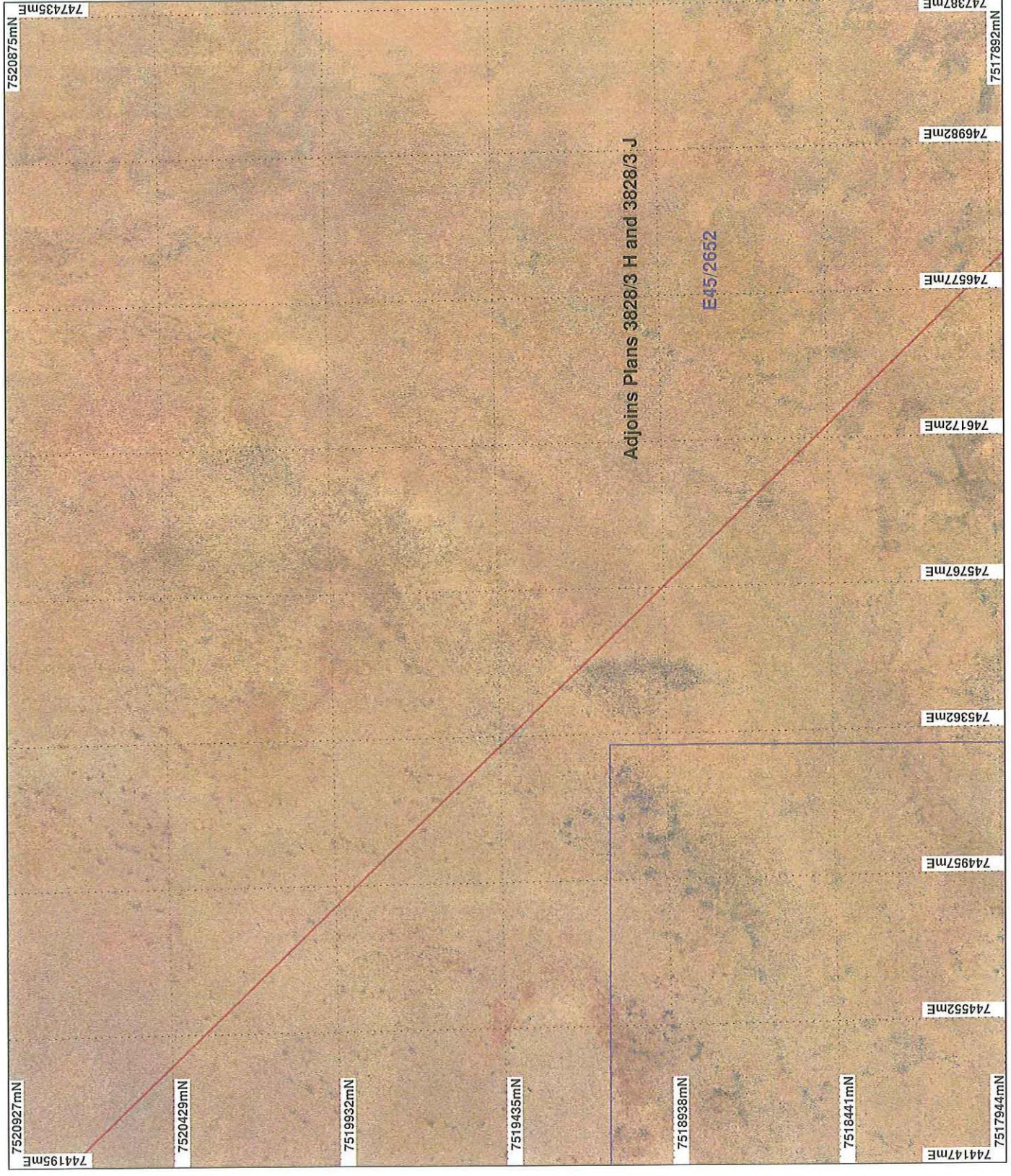
Officer with delegated authority under Section 20 of
the Environmental Protection Act 1986

Information derived from this map should be
confirmed with the data custodian acknowledged
by the agency acronym in the legend.



WA Crown Copyright 2002

PLAN 3828/3 I



LEGEND

- Mining Tenements
 - Clearing Instruments
 - Areas Approved to Clear
 - Clearing Instruments_1
 - Areas Subject to Conditions
- Mount Marsh 50cm Orthomosaic -
Langgate 2008

* Project Data. This data has not been quality assured. Please contact map author for details.



Scale 1:15000
(Approximate when reproduced at A4)

Geocentric Datum Australia 1994

Note: the data in this map have not been projected. This may result in geometric distortion or measurement inaccuracies.

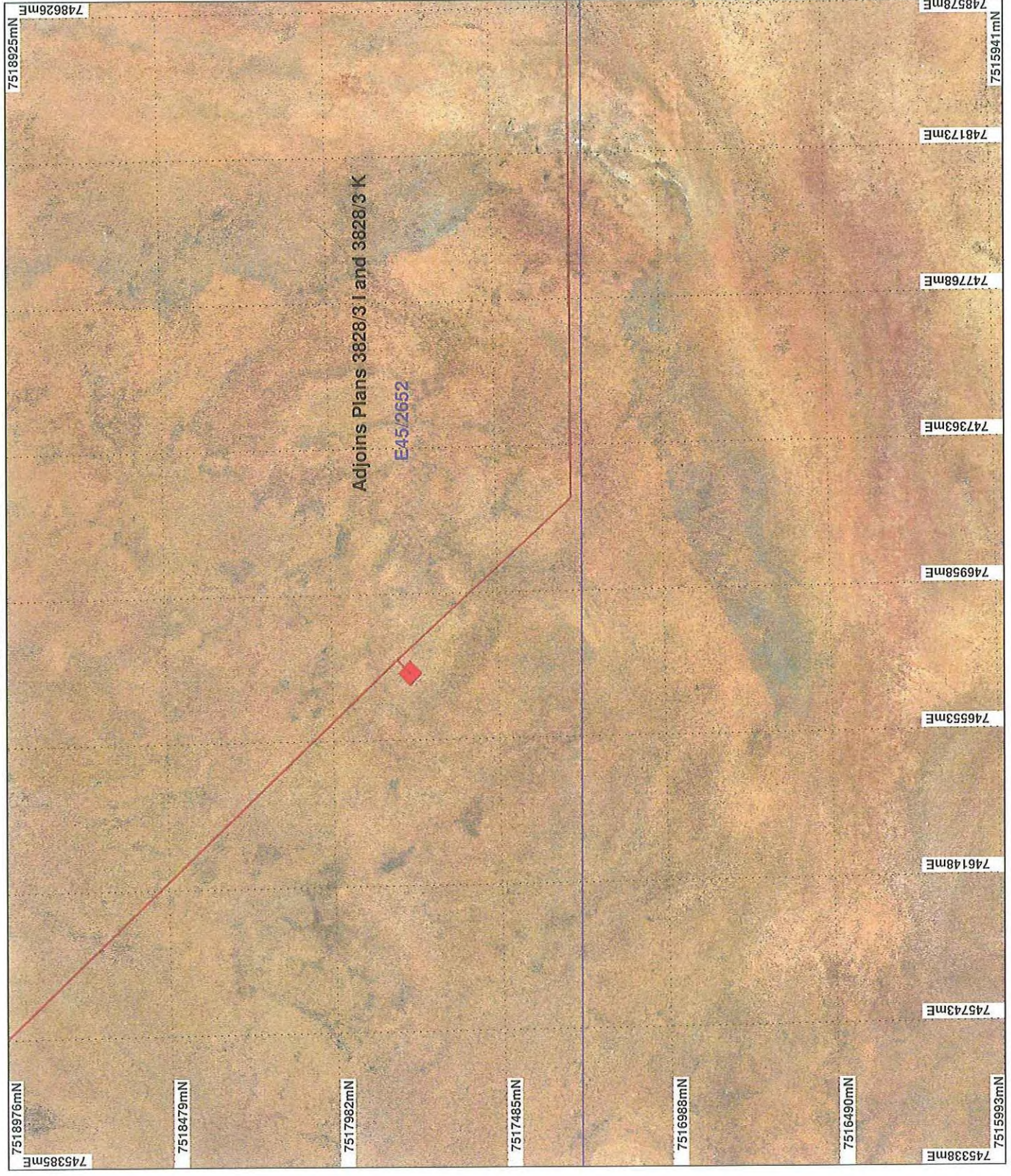
VIRGINIA SIMMS Date 23/1/10

Officer with delegated authority under Section 20 of the Environmental Protection Act 1986
Information derived from this map should be confirmed with the data custodian acknowledged by the agency acronym in the legend.



WA Crown Copyright 2002

PLAN 3828/3 J



LEGEND

- Mining Tenements
- Clearing Instruments
- Areas Approved to Clear
- Clearing Instruments_1
- Areas Subject to Conditions
- Mount Marsh 50cm Orthomosaic - Langgate 2008

* Project Data. This data has not been quality assured. Please contact map author for details.



Scale 1:15000
(Approximate when reproduced at A4)

Geocentric Datum Australia 1994

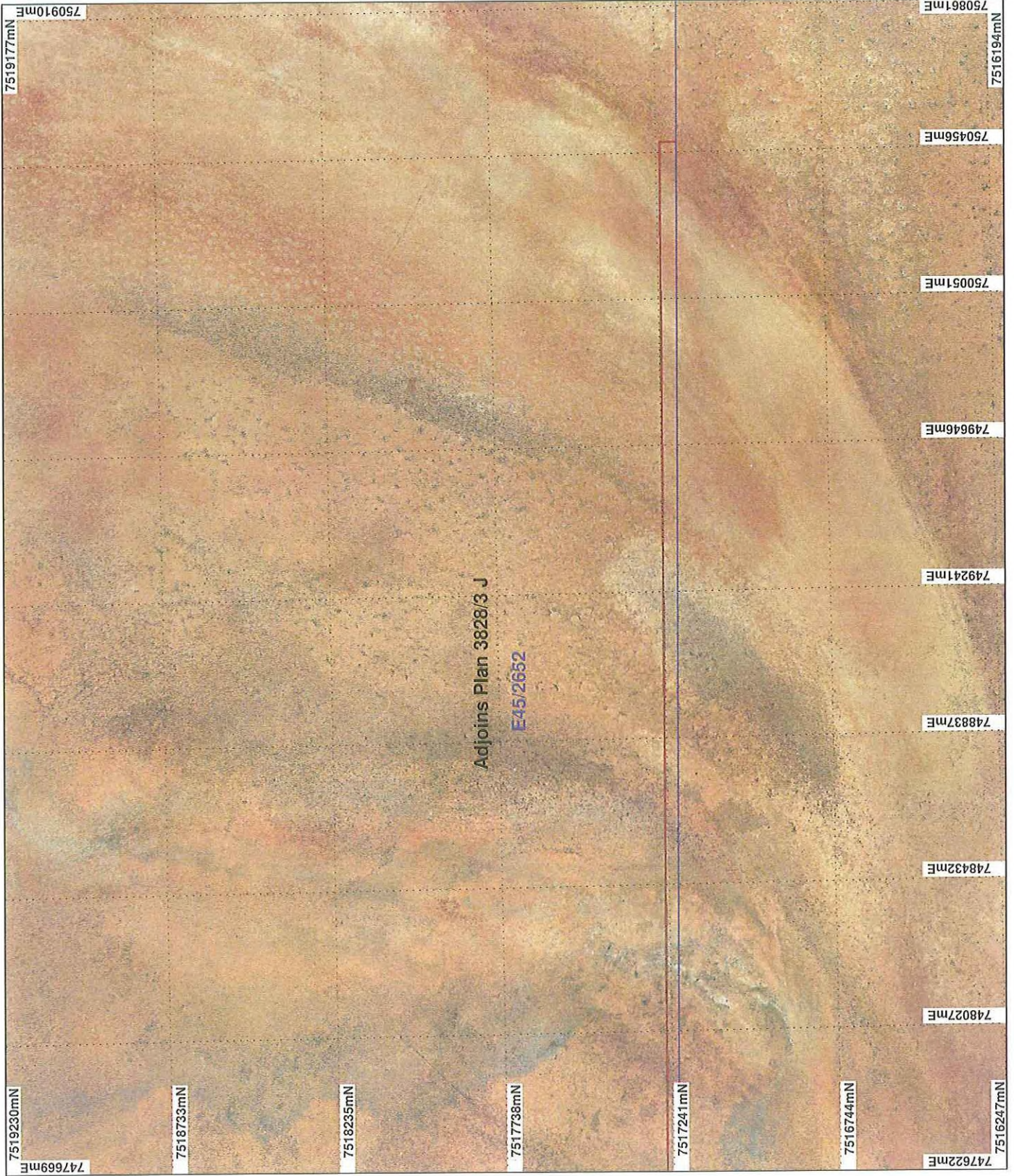
Note: the data in this map have not been projected. This may result in geometric distortion or measurement inaccuracies.

Virginia Simms
VIRGINIA SIMMS Date 23/12/18

Officer with delegated authority under Section 20 of the Environmental Protection Act 1986
Information derived from this map should be confirmed with the data custodian acknowledged by the agency acronym in the legend.



PLAN 3828/3 K



LEGEND

- Mining Tenements
- Clearing Instruments
- Areas Approved to Clear
- Clearing Instruments_1
- Areas Subject to Conditions
- Mount Marsh 50cm Orthomosaic - Langgate 2008

* Project Data. This data has not been quality assured. Please contact map author for details.



0 375 m

Scale 1:15000

(Approximate when reproduced at A4)

Geocentric Datum Australia 1994

Note: the data in this map have not been projected. This may result in geometric distortion or measurement inaccuracies.

Virginia Simms Date 23/12/10

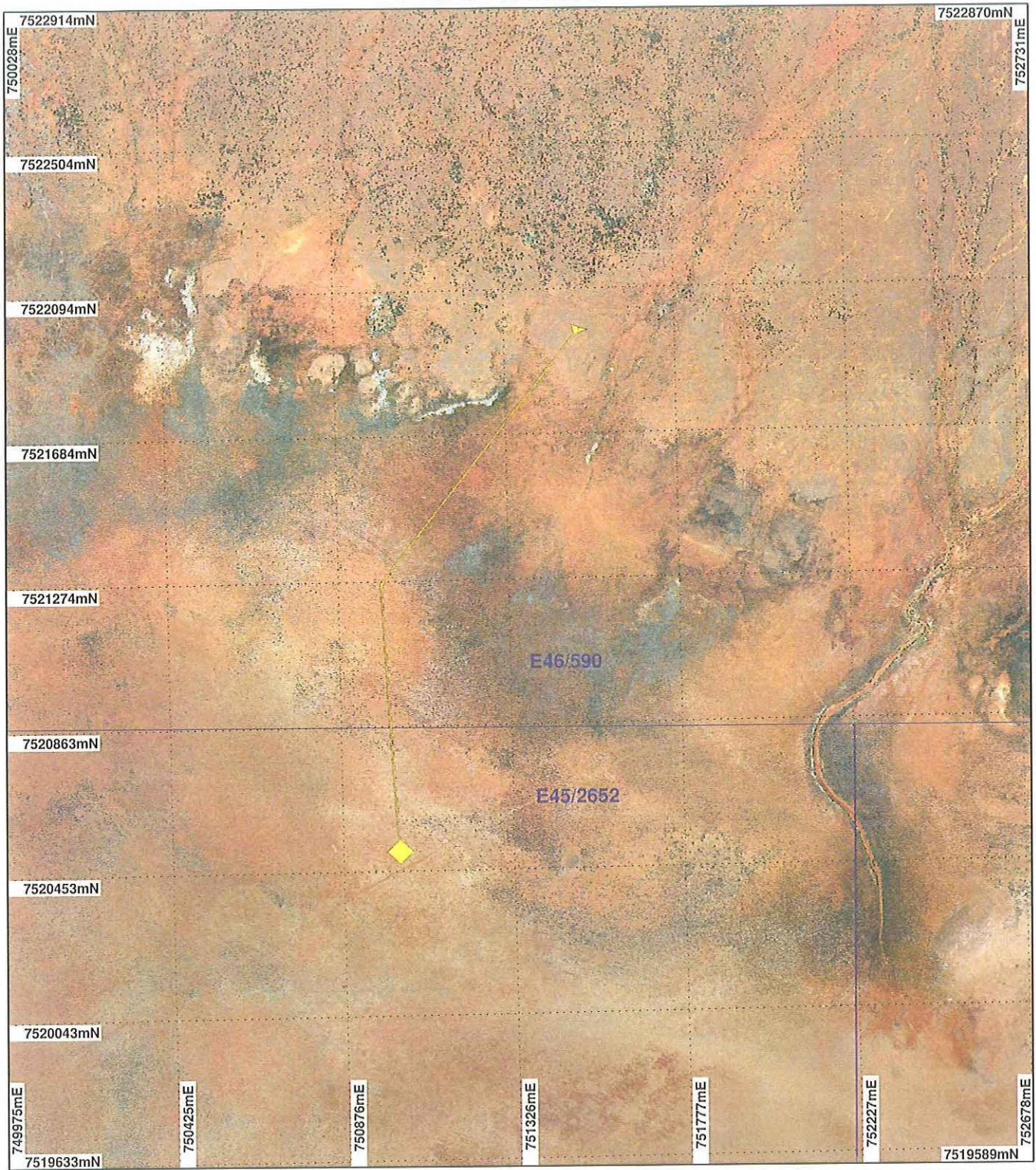
VIRGINIA SIMMS

Officer with delegated authority under Section 20 of the Environmental Protection Act 1986

Information derived from this map should be confirmed with the data custodian acknowledged by the agency acronym in the legend.



PLAN 3828/3 L



LEGEND

- Mining Tenements Clearing Instruments
- Areas Approved to Clear Clearing Instruments_1
- Areas Subject to Conditions

Mount Marsh 50cm
Orthomosaic - Landgate
2008



Scale 1:15000
(Approximate when reproduced at A4)

Geocentric Datum Australia 1994

Note: the data in this map have not been projected. This may result in geometric distortion or measurement inaccuracies.

Virginia Simms
Date: 23/12/10
VIRGINIA SIMMS

Officer with delegated authority under Section 20 of the Environmental Protection Act 1986

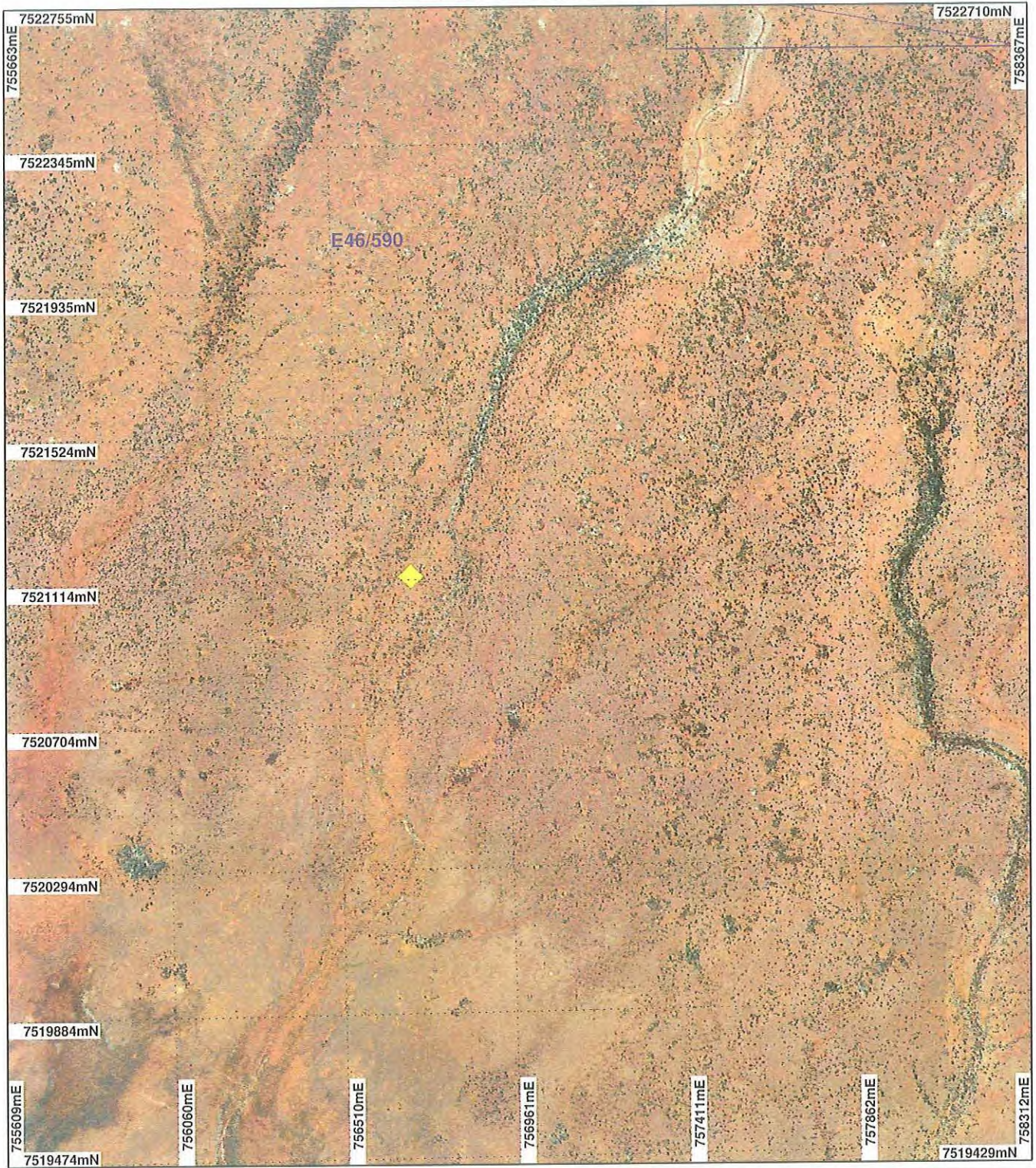
Information derived from this map should be confirmed with the data custodian acknowledged by the agency acronym in the legend.



WA Crown Copyright 2002

* Project Data. This data has not been quality assured. Please contact map author for details.

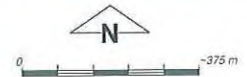
PLAN 3828/3 M



LEGEND

- Mining Tenements
- Clearing Instruments
- Areas Approved to Clear
- Clearing Instruments_1
- Areas Subject to Conditions

Mount Marsh 50cm
Orthomosaic - Landgate
2008



Scale 1:15000

(Approximate when reproduced at A4)

Geocentric Datum Australia 1994

Note: the data in this map have not been projected. This may result in geometric distortion or measurement inaccuracies.

Virginia Simms Date 27/12/10
VIRGINIA SIMMS

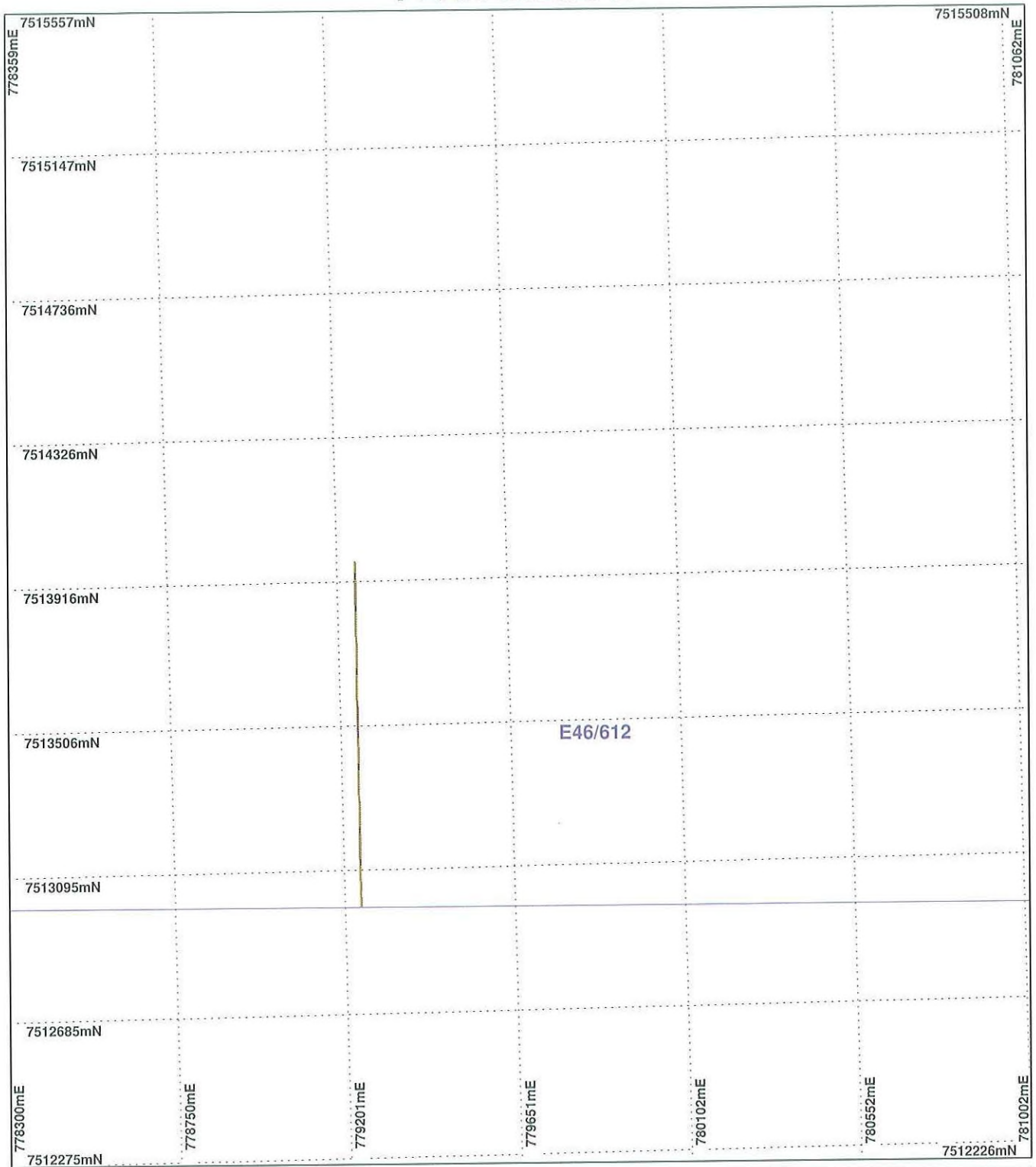
Officer with delegated authority under Section 20 of the Environmental Protection Act 1986

Information derived from this map should be confirmed with the data custodian acknowledged by the agency acronym in the legend.



WA Crown Copyright 2002

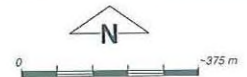
PLAN 3828/3 N



LEGEND

- Mining Tenements
- Clearing Instruments
- Areas Approved to Clear
- Clearing Instruments_1
- Areas Subject to Conditions

Roy Hill 50cm Orthomosaic -
Landgate 2004



Scale 1:15000

(Approximate when reproduced at A4)

Geocentric Datum Australia 1994

Note: the data in this map have not been projected. This may result in geometric distortion or measurement inaccuracies.

Date 23/10/20

VIRGINIA SIMMS

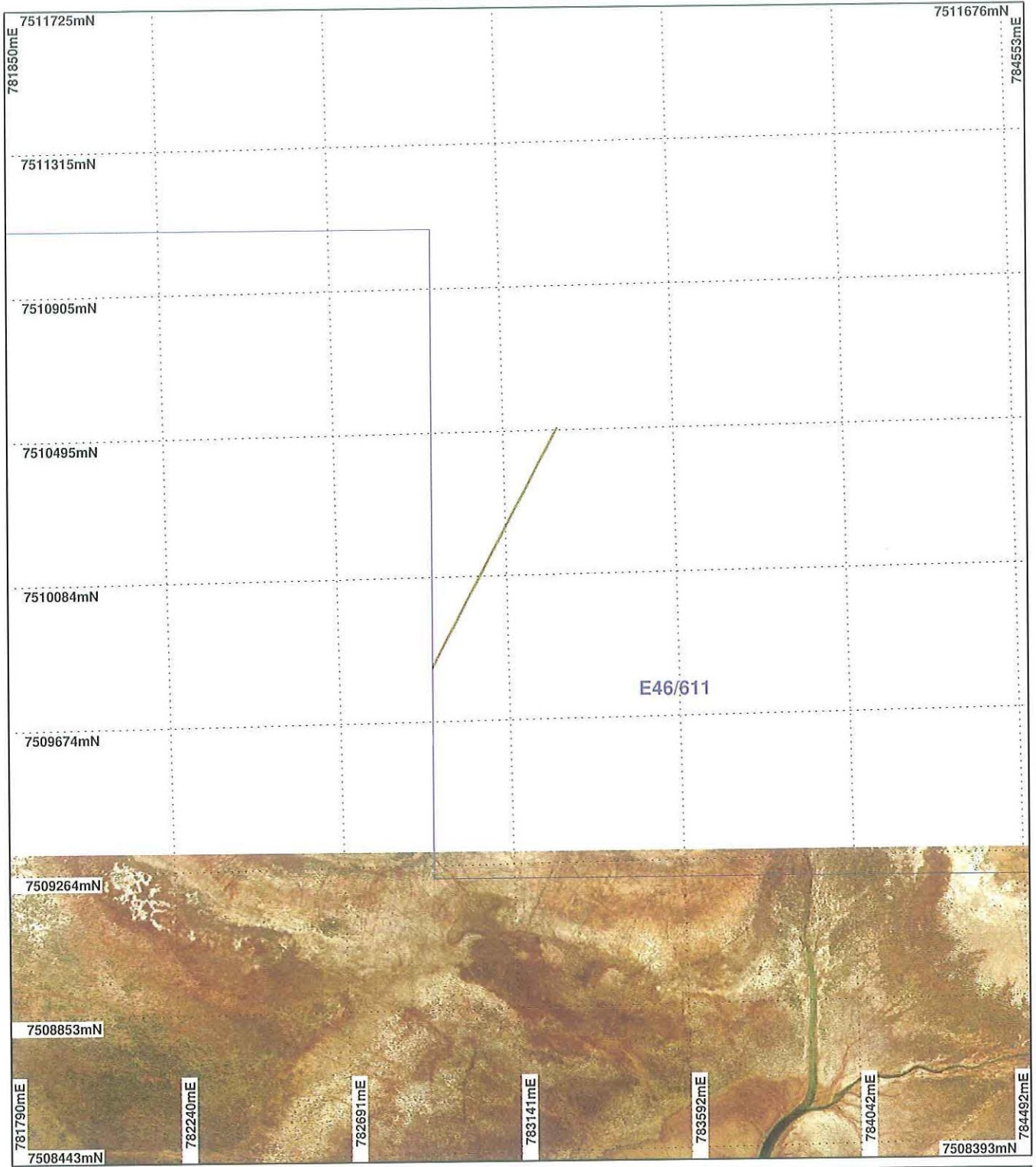
Officer with delegated authority under Section 20 of
the Environmental Protection Act 1986

Information derived from this map should be
confirmed with the data custodian acknowledged
by the agency acronym in the legend.



WA Crown Copyright 2002

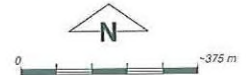
PLAN 3828/3 O



LEGEND

- Mining Tenements
- Clearing Instruments
- Areas Approved to Clear
- Clearing Instruments_1
- Areas Subject to Conditions

Roy Hill 50cm Orthomosaic -
Landgate 2004



Geocentric Datum Australia 1994

Note: the data in this map have not been projected. This may result in geometric distortion or measurement inaccuracies.

Virginia Simms Date 23/12/10
VIRGINIA SIMMS

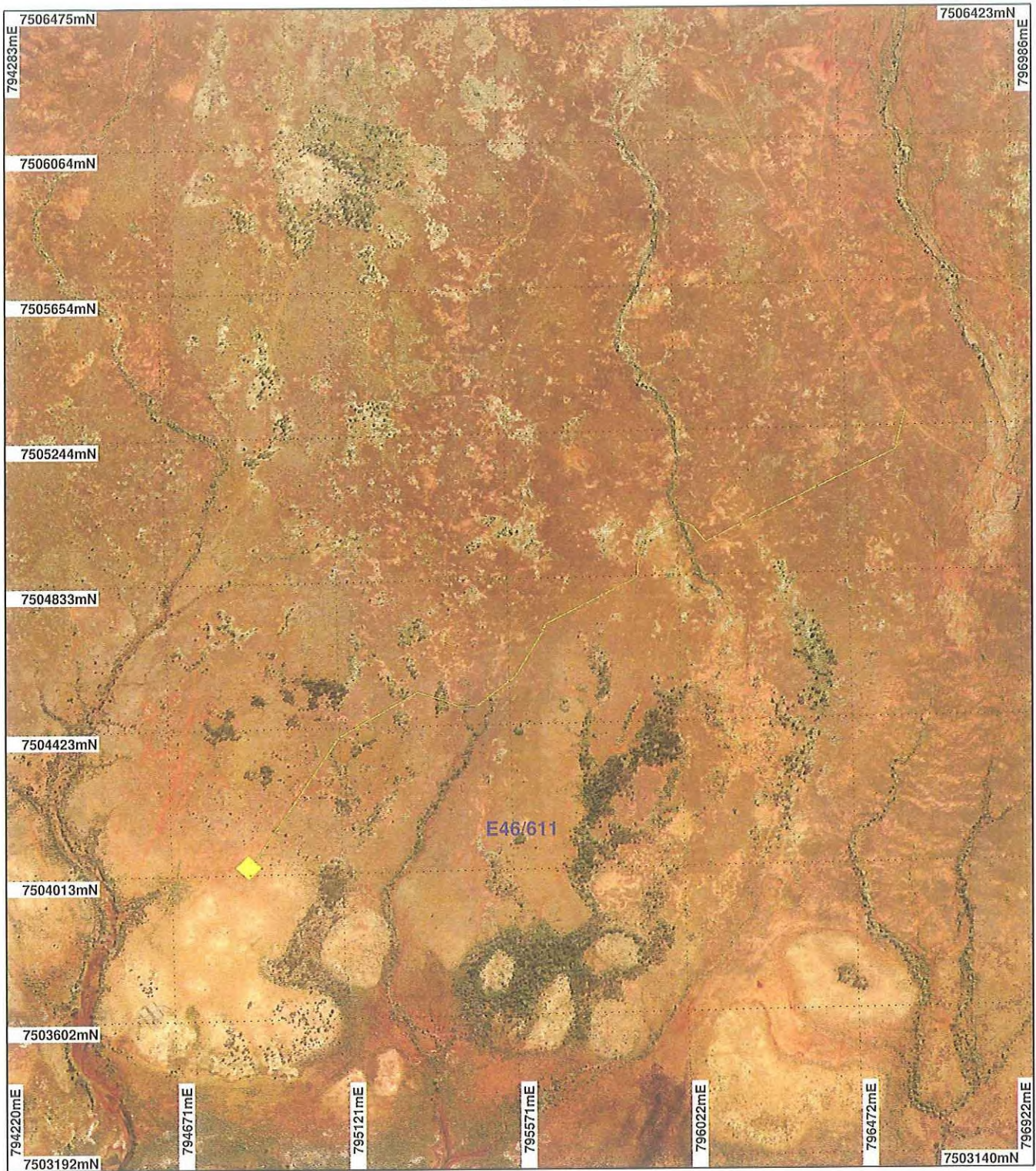
Officer with delegated authority under Section 20 of
the Environmental Protection Act 1986

Information derived from this map should be
confirmed with the data custodian acknowledged
by the agency acronym in the legend.



WA Crown Copyright 2002

PLAN 3828/3 P



LEGEND

- | | |
|---|--|
| <input type="checkbox"/> Mining Tenements | <input type="checkbox"/> Clearing Instruments_1 |
| <input type="checkbox"/> Clearing Instruments | <input type="checkbox"/> Areas Subject to Conditions |
| <input checked="" type="checkbox"/> Areas Approved to Clear | |
- Roy Hill 50cm Orthomosaic - Landgate 2004



Scale 1:15000

(Approximate when reproduced at A4)

Geocentric Datum Australia 1994

Note: the data in this map have not been projected. This may result in geometric distortion or measurement inaccuracies.

Virginia Simms Date 23/12/10
 VIRGINIA SIMMS

Officer with delegated authority under Section 20 of the Environmental Protection Act 1986

Information derived from this map should be confirmed with the data custodian acknowledged by the agency acronym in the legend.



WA Crown Copyright 2002