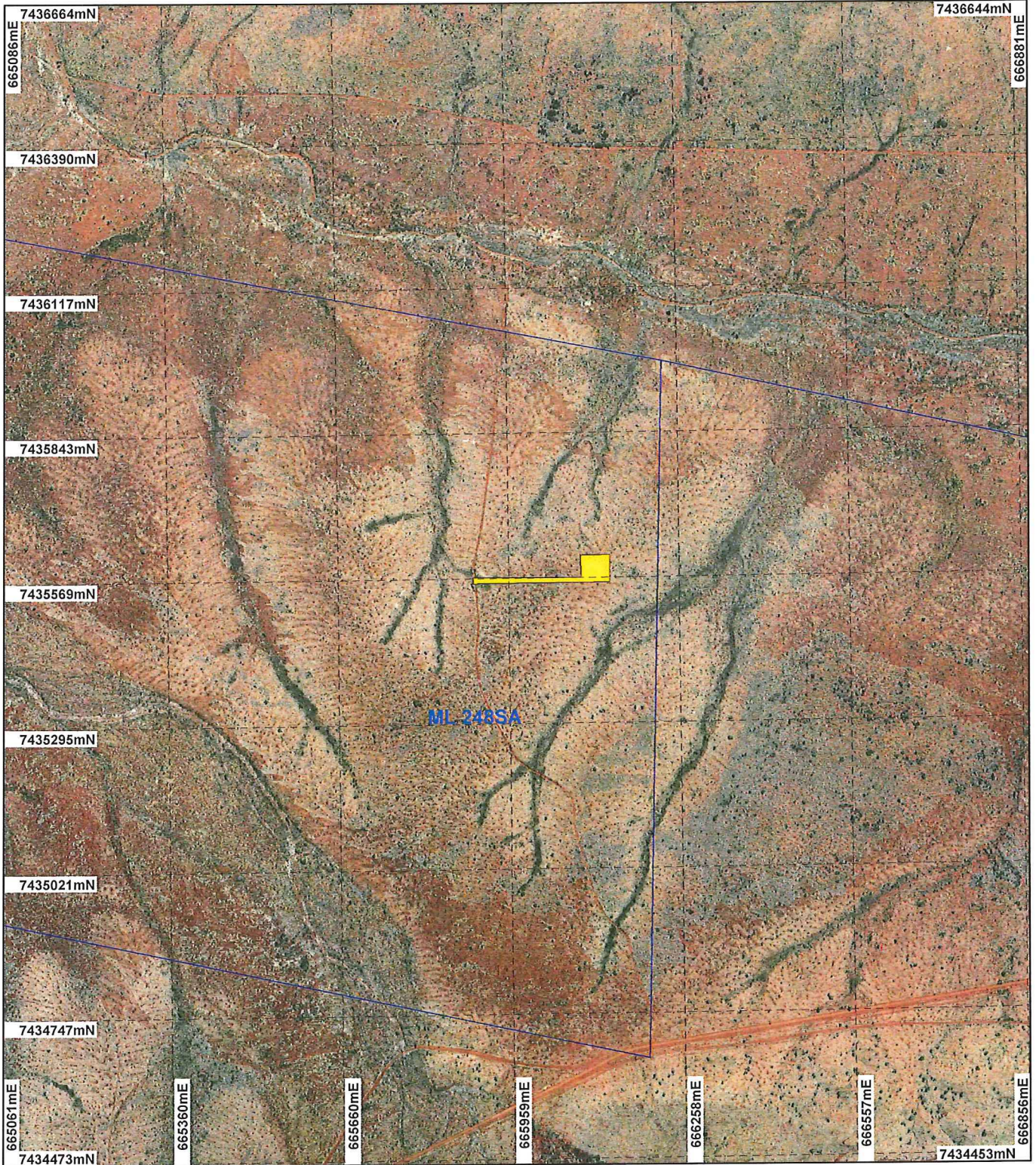
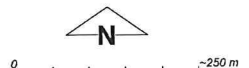


PLAN 3893/3A



LEGEND

- Mining Tenements
- Clearing Instruments
- Areas Approved to Clear
- Governor 50cm Orthomosaic - Landgate 2004**



Scale 1:10000
(Approximate when reproduced at A4)

Geocentric Datum Australia 1994

Note: the data in this map have not been projected. This may result in geometric distortion or measurement inaccuracies.

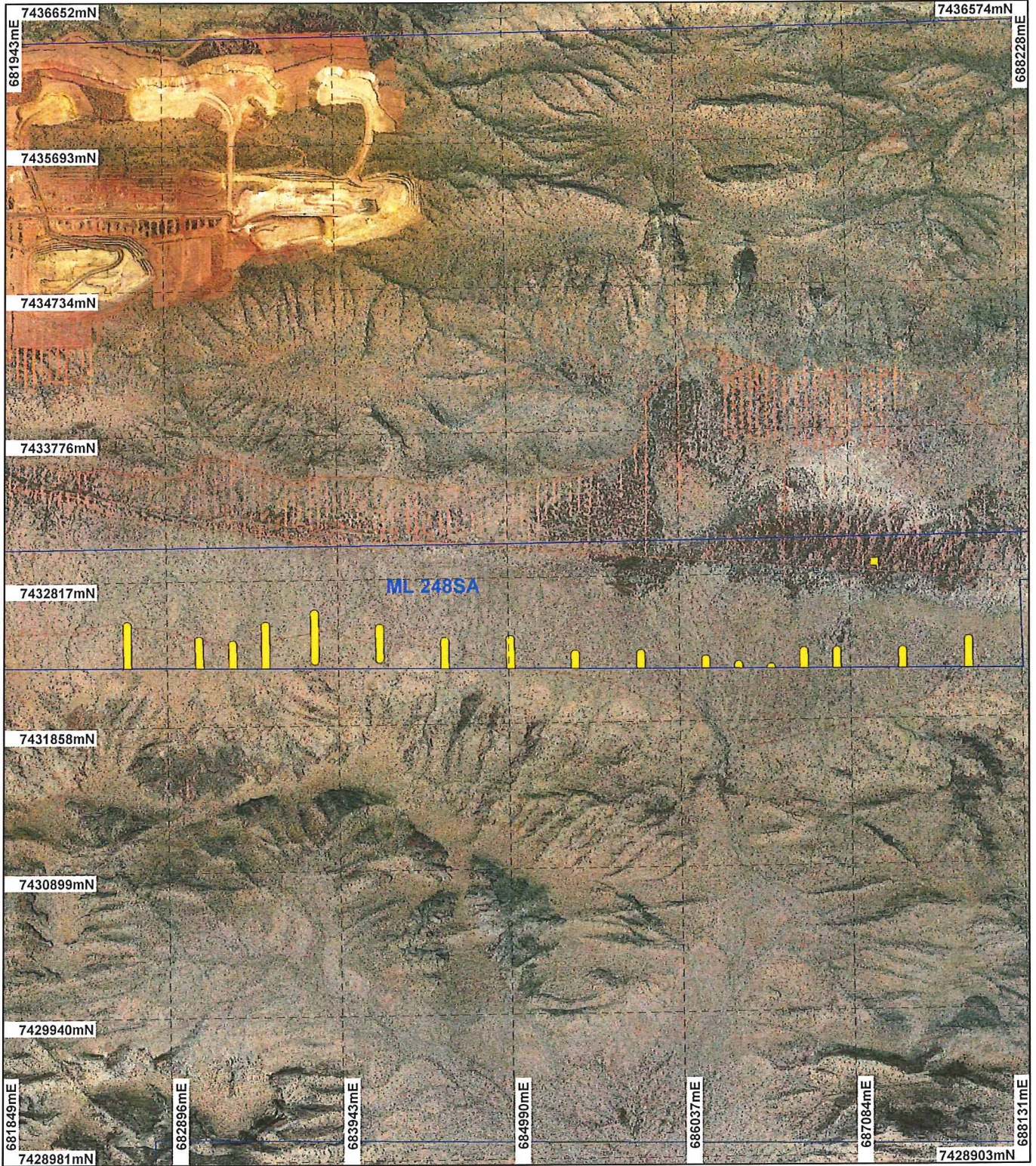
..... Date 10/1/14

STEVE TANTALÀ
 Officer with delegated authority under Section 20 of the Environmental Protection Act 1986

Information derived from this map should be confirmed with the data custodian acknowledged by the agency acronym in the legend.

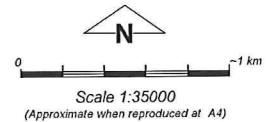


PLAN 3893/3B



LEGEND

- Mining Tenements
- Clearing Instruments
- Areas Approved to Clear
- Governor 50cm Orthomosaic - Landgate 2004



Geocentric Datum Australia 1994

Note: the data in this map have not been projected. This may result in geometric distortion or measurement inaccuracies.

[Signature] Date *12/10/04*

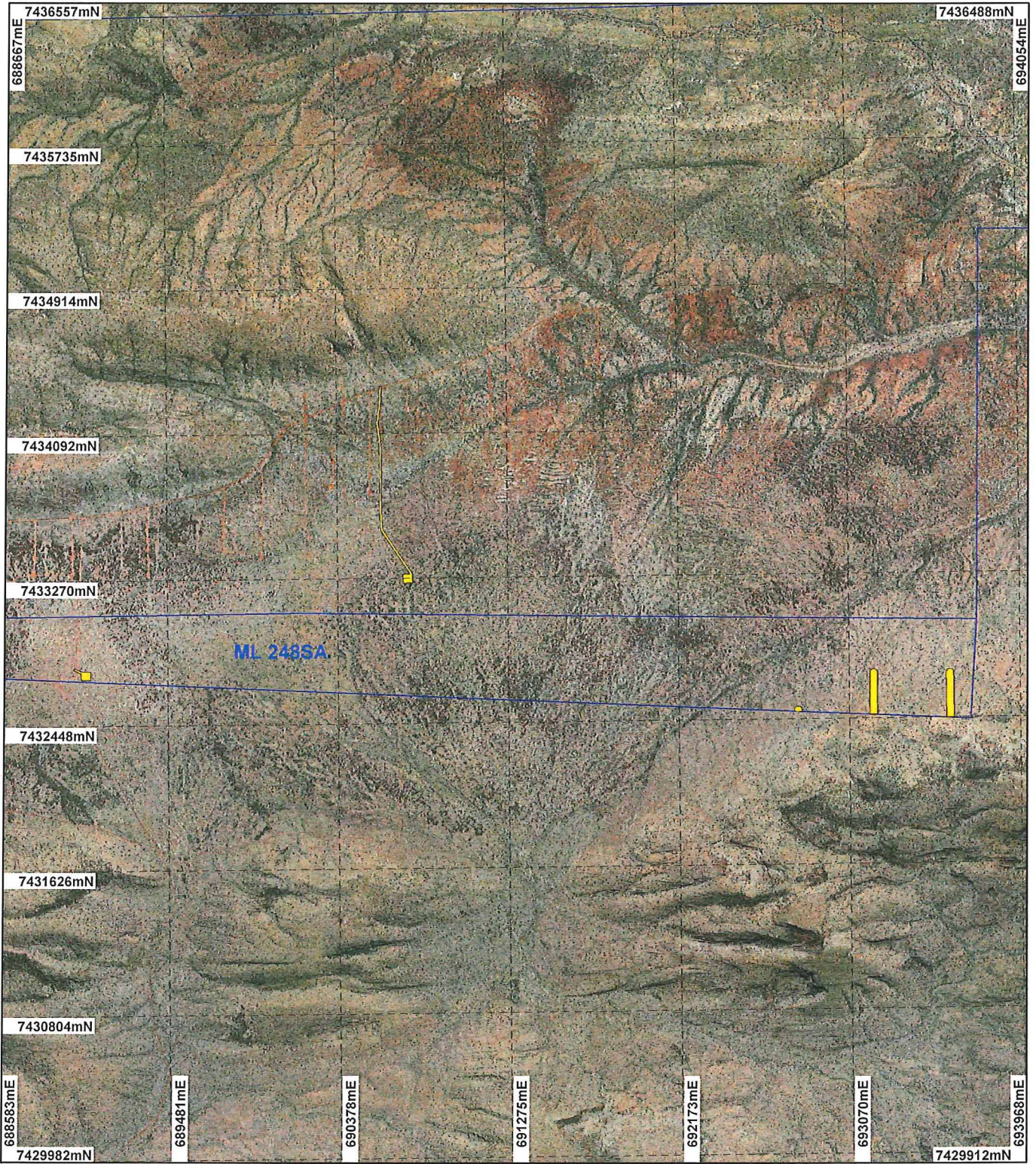
STEVE TANTALA

Officer with delegated authority under Section 20 of the Environmental Protection Act 1986

Information derived from this map should be confirmed with the data custodian acknowledged by the agency acronym in the legend.

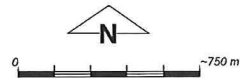


PLAN 3893/3C



LEGEND

- Mining Tenements
 - Clearing Instruments
 - Areas Approved to Clear
- Governor 50cm Orthomosaic -
Landgate 2004



Scale 1:30000
(Approximate when reproduced at A4)

Geocentric Datum Australia 1994

Note: the data in this map have not been projected. This may result in geometric distortion or measurement inaccuracies.

..... Date 10/7/14

STEVE TANTALA

Officer with delegated authority under Section 20 of the Environmental Protection Act 1986

Information derived from this map should be confirmed with the data custodian acknowledged by the agency acronym in the legend.



WA Crown Copyright 2002