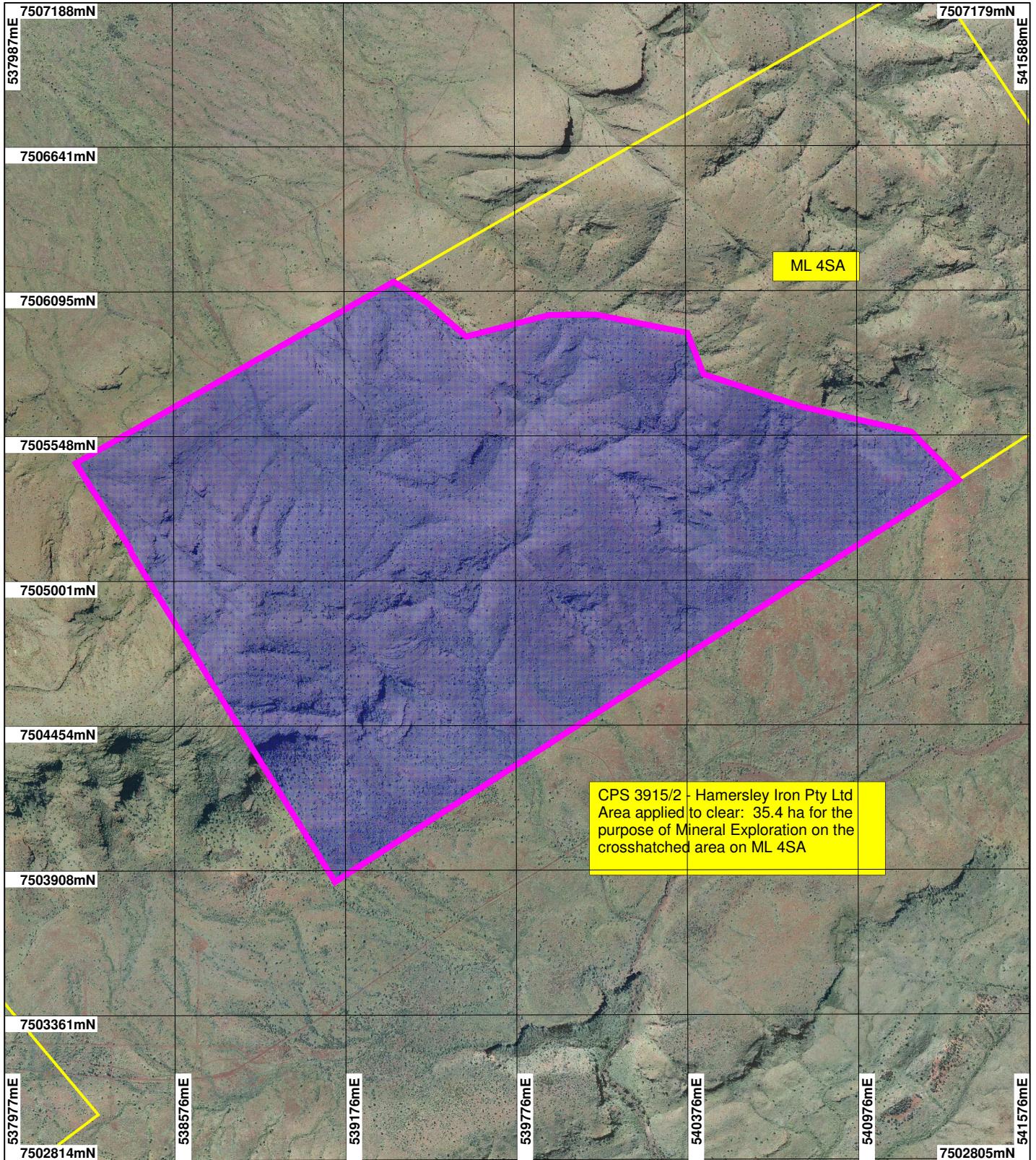


# CPS 3915/2 - Hamersley Iron Pty Ltd



## LEGEND

- Mining Tenements
- Clearing Instruments
- Areas Applied to Clear
- Clearing Instruments\_1
- Areas Applied to Clear

Rocklea 50cm Orthomosaic - Landgate 2004



Scale 1:20000  
(Approximate when reproduced at A4)

Geocentric Datum Australia 1994

Note: the data in this map have not been projected. This may result in geometric distortion or measurement inaccuracies.

..... Date .....

Officer with delegated authority under Section 20 of the Environmental Protection Act 1986

Information derived from this map should be confirmed with the data custodian acknowledged by the agency acronym in the legend.



WESTERN AUSTRALIA  
WA Crown Copyright 2002