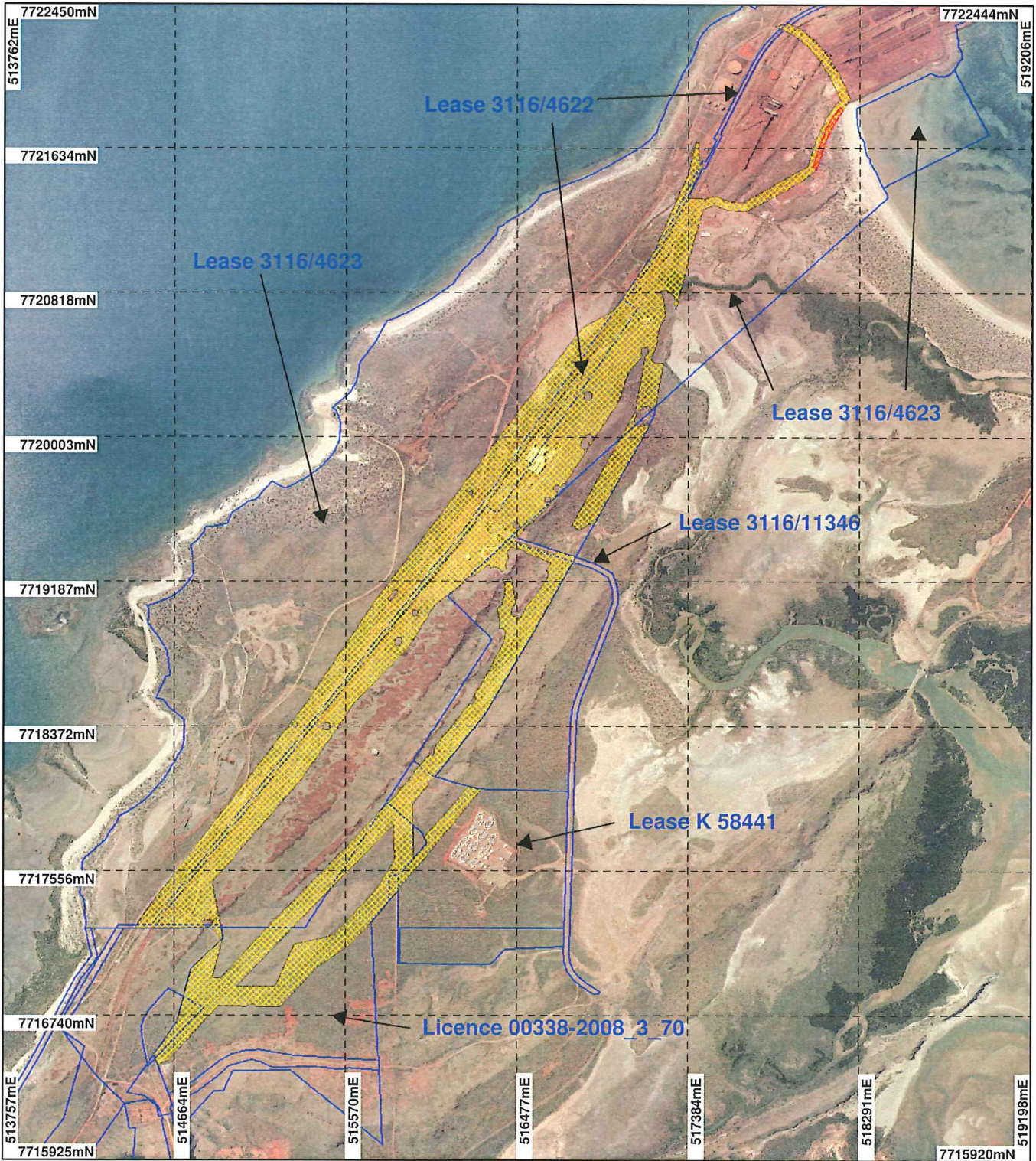







PLAN 4073/2A



LEGEND

-  Land parcels related to instrument
-  Cadastre Clearing Instruments
-  Areas Subject to Conditions (cont)
-  Areas Approved to Clear
-  Roebourne 50cm Orthomosaic - Landgate 2007



Scale 1:30000
(Approximate when reproduced at Letter)

Geocentric Datum Australia 1994

Note: the data in this map have not been projected. This may result in geometric distortion or measurement inaccuracies.

 Date 23/6/11

Officer with delegated authority under Section 20 of the Environmental Protection Act 1986

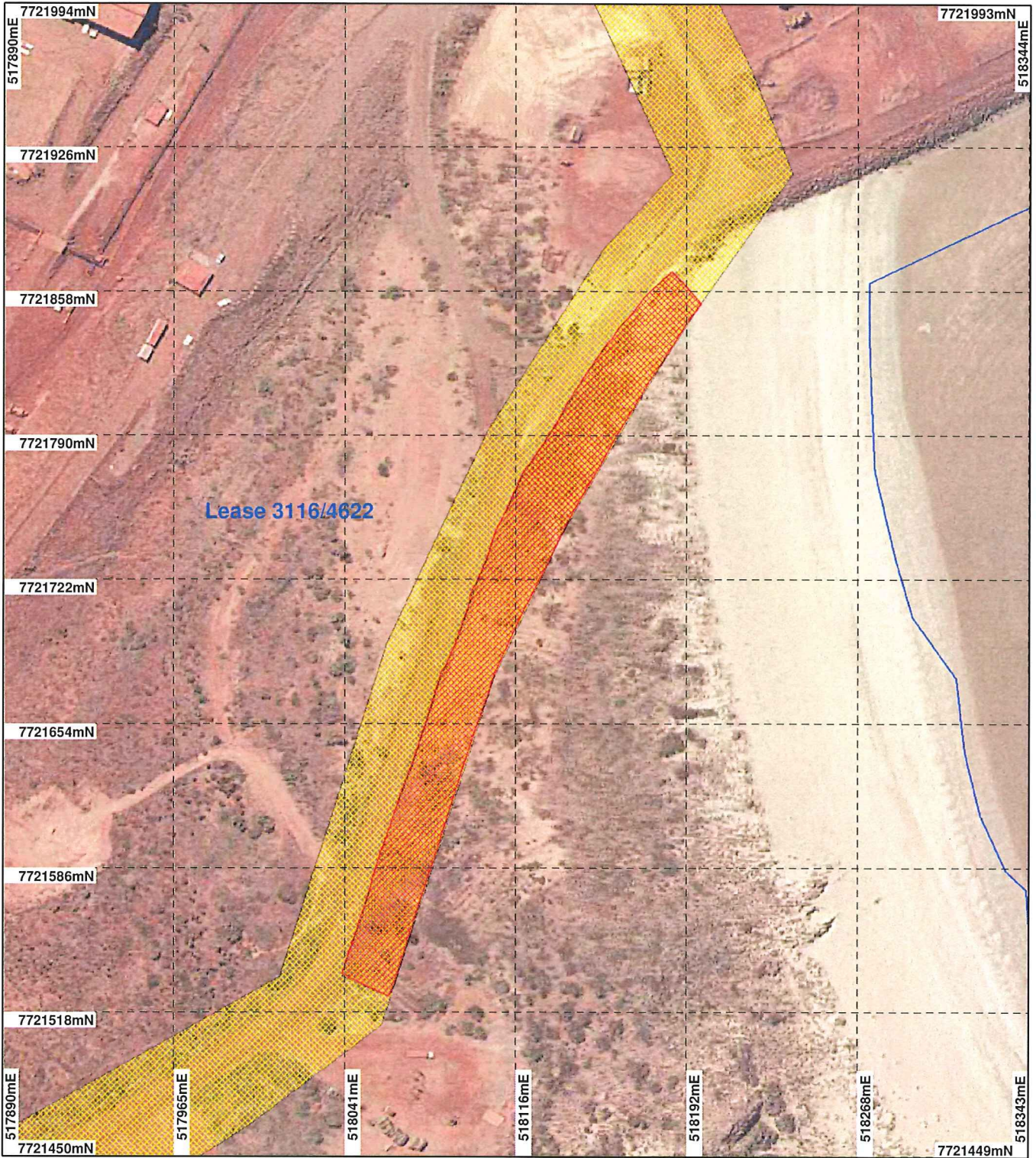
Information derived from this map should be confirmed with the data custodian acknowledged by the agency acronym in the legend.







WA Crown Copyright 2002

* Project Data. This data has not been quality assured. Please contact map author for details.

PLAN 4073/2B



LEGEND

-  Land parcels related to instrument
 -  Cadastre Clearing Instruments
 -  Areas Subject to Conditions (cont)
 -  Areas Approved to Clear
- Roeboorne 50cm Orthomosaic
Landgate 2007



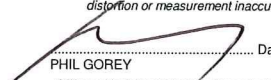
0  62 m

Scale 1:2500

(Approximate when reproduced at Letter)

Geocentric Datum Australia 1994

Note: the data in this map have not been projected. This may result in geometric distortion or measurement inaccuracies.

 Date 23/6/11

PHIL GOREY

Officer with delegated authority under Section 20 of the Environmental Protection Act 1986

Information derived from this map should be confirmed with the data custodian acknowledged by the agency acronym in the legend.



WA Crown Copyright 2002