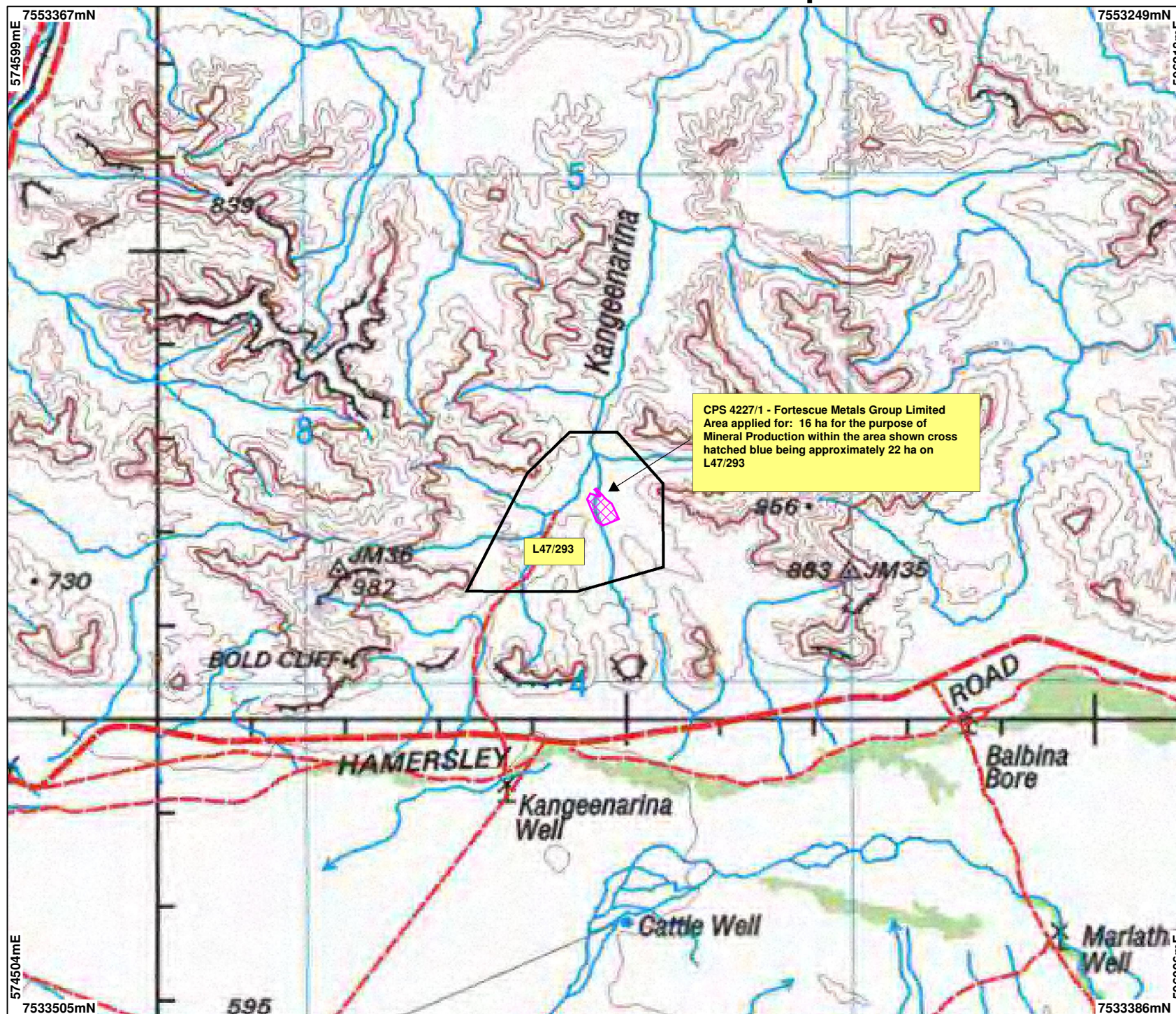


# CPS 4227/1 - Fortescue Metals Group Limited

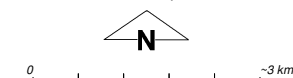


CPS 4227/1 - Fortescue Metals Group Limited  
Area applied for: 16 ha for the purpose of  
Mineral Production within the area shown cross  
hatched blue being approximately 22 ha on  
L47/293

## LEGEND

- Mining Tenements
- Clearing Instruments
- NATMAP 250K Series Mapping - GA 08/03

\* Project Data. This data has not been quality assured. Please contact map author for details.



Scale 1:100000

(Approximate when reproduced at A4)

Geocentric Datum Australia 1994

Note: the data in this map have not been projected. This may result in geometric distortion or measurement inaccuracies.

..... Date .....

Officer with delegated authority under Section 20 of the Environmental Protection Act 1986

Information derived from this map should be confirmed with the data custodian acknowledged by the agency acronym in the legend.



WA Crown Copyright 2002