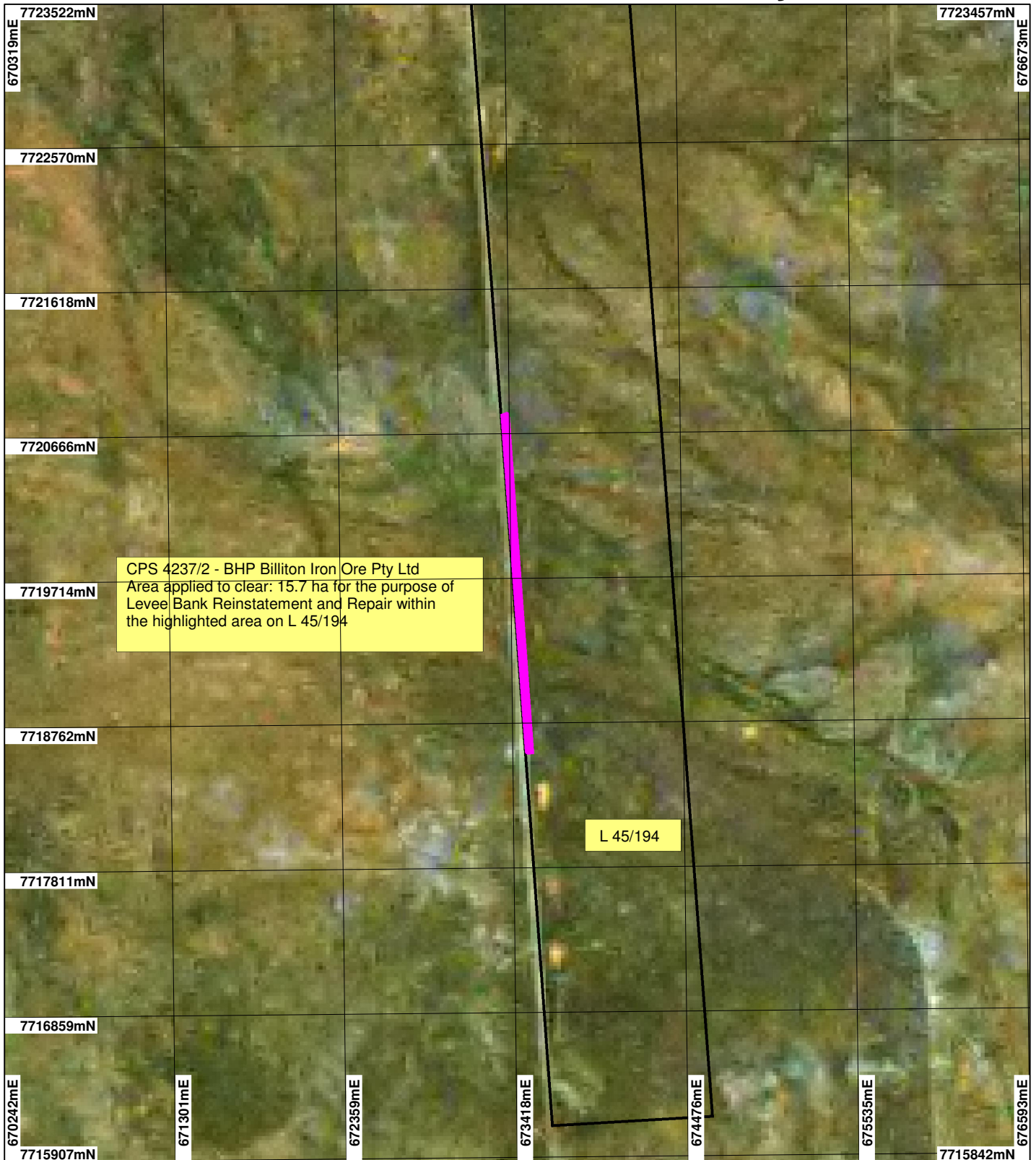


# CPS 4237/2 - BHP Billiton Iron Ore Pty Ltd



## LEGEND

- Mining Tenements
- > Image Index
- Recently added
- Coverage
- Clearing Instruments\_1**
- Areas Applied to Clear



Scale 1:35000  
(Approximate when reproduced at A4)

Geocentric Datum Australia 1994

Note: the data in this map have not been projected. This may result in geometric distortion or measurement inaccuracies.

..... Date .....

Officer with delegated authority under Section 20 of the Environmental Protection Act 1986

Information derived from this map should be confirmed with the data custodian acknowledged by the agency acronym in the legend.



WA Crown Copyright 2002

\* Project Data. This data has not been quality assured. Please contact map author for details.