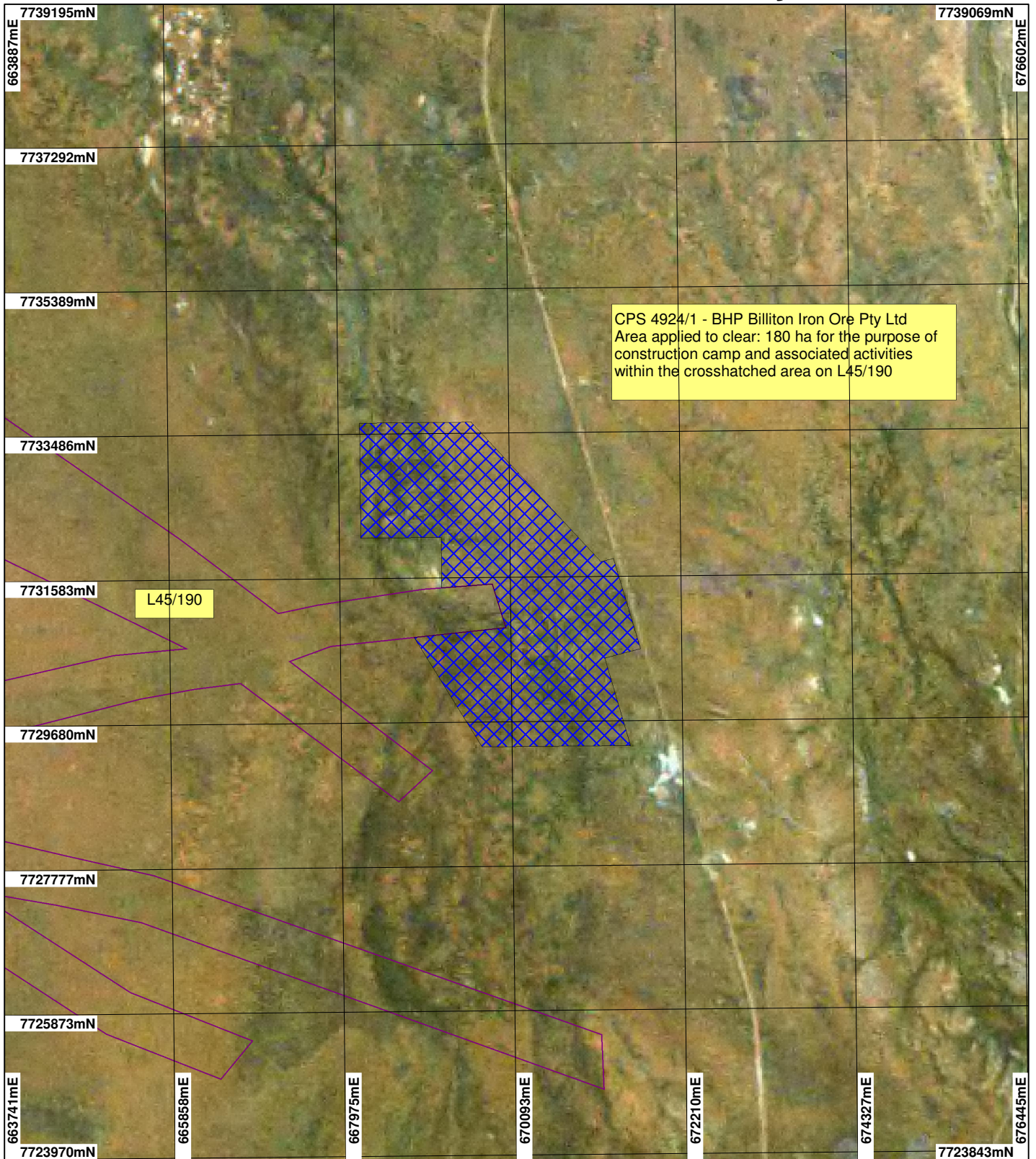


# CPS 4294/2 - BHP Billiton Iron Ore Pty Ltd



## LEGEND

- Mining Tenements
- Clearing Instruments\_1
- Areas Applied to Clear



0 ~2 km

Scale 1:70000

(Approximate when reproduced at A4)

Geocentric Datum Australia 1994

Note: the data in this map have not been projected. This may result in geometric distortion or measurement inaccuracies.

..... Date .....

Officer with delegated authority under Section 20 of  
the Environmental Protection Act 1986

Information derived from this map should be  
confirmed with the data custodian acknowledged  
by the agency acronym in the legend.



WESTERN AUSTRALIA  
WA Crown Copyright 2002