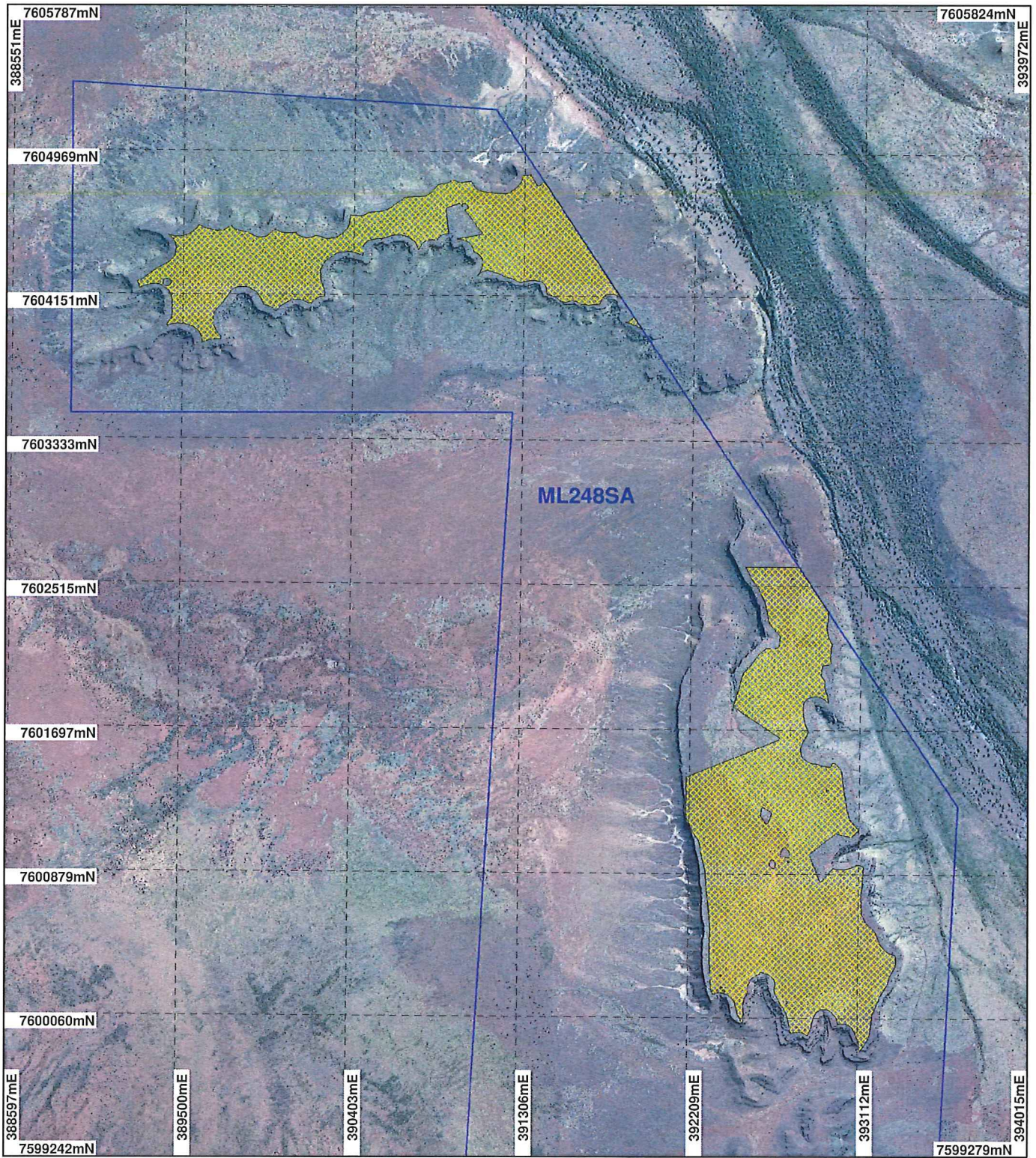


PLAN 4343/1A



LEGEND

- Mining Tenements
 - Clearing Instruments
 - Areas Approved to Clear
- Yarraloola 1.4m Orthomosaic - Landgate 2001



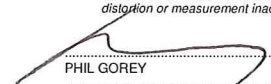
0 750 m

Scale 1:30000

(Approximate when reproduced at A4)

Geocentric Datum Australia 1994

Note: the data in this map have not been projected. This may result in geometric distortion or measurement inaccuracies.

 Date 21/7/11

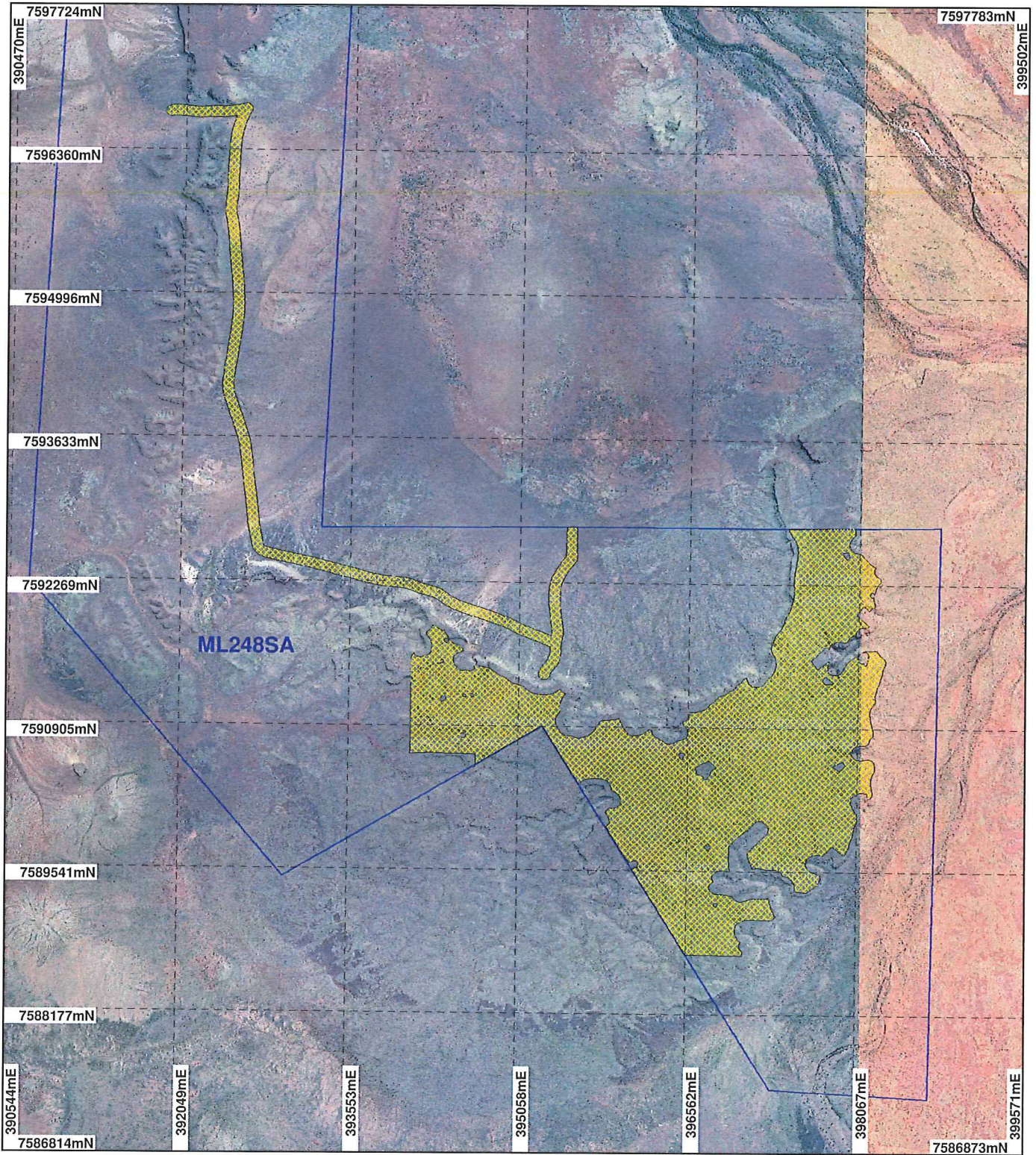
PHIL GOREY
Officer with delegated authority under Section 20 of the Environmental Protection Act 1986

Information derived from this map should be confirmed with the data custodian acknowledged by the agency acronym in the legend.



WA Crown Copyright 2002

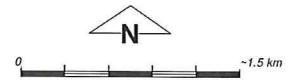
PLAN 4343/1B



LEGEND

- Mining Tenements
 - Clearing Instruments
 - Areas Approved to Clear
- Pannawonica 1.4m Orthomosaic - Landgate 2000

Yarraloola 1.4m Orthomosaic - Landgate 2001

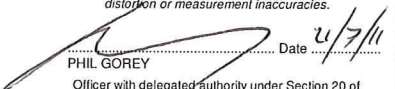


Scale 1:50000

(Approximate when reproduced at A4)

Geocentric Datum Australia 1994

Note: the data in this map have not been projected. This may result in geometric distortion or measurement inaccuracies.

 Date 2/7/11

PHIL GOREY

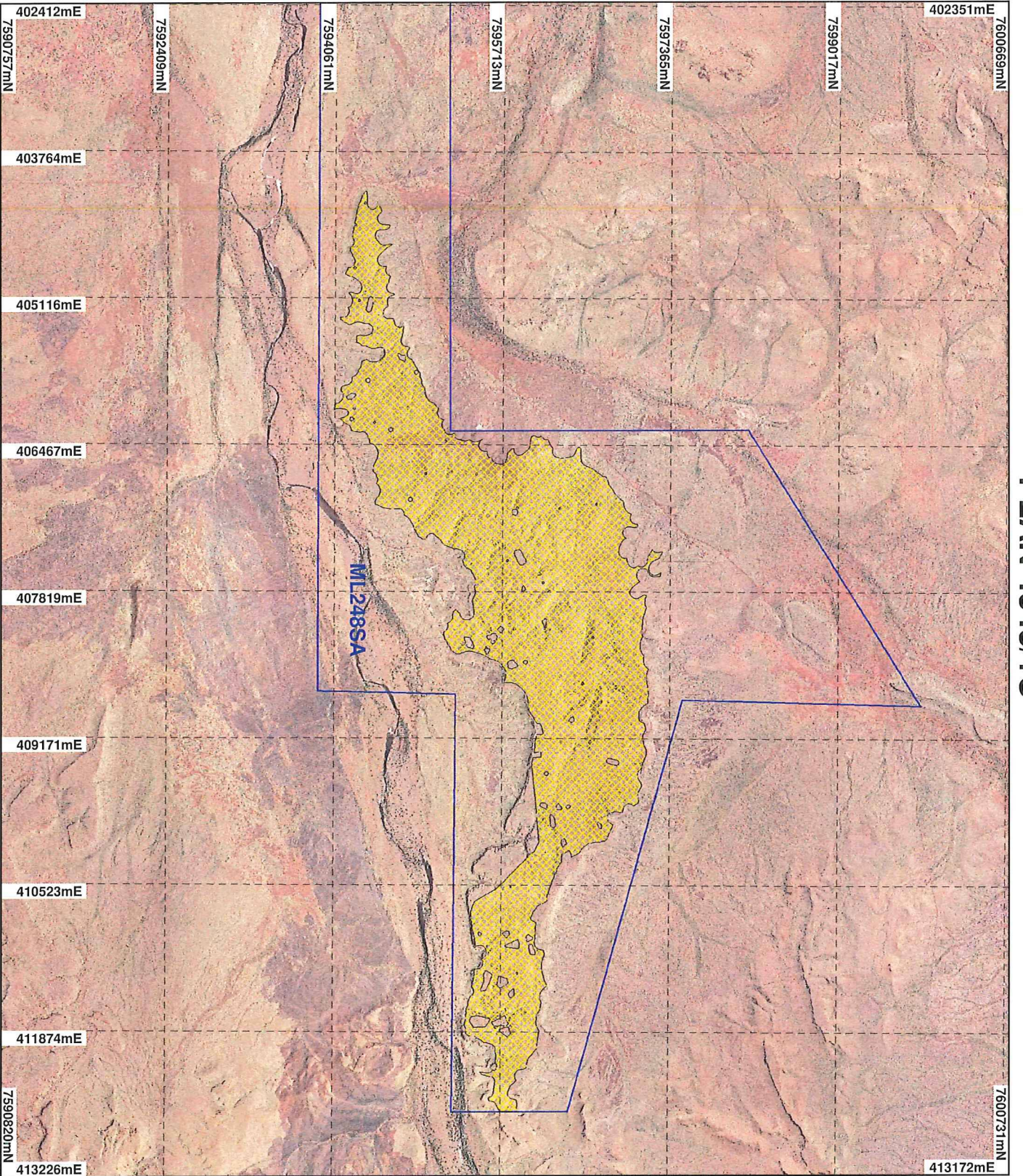
Officer with delegated authority under Section 20 of the Environmental Protection Act 1986

Information derived from this map should be confirmed with the data custodian acknowledged by the agency acronym in the legend.



WA Crown Copyright 2002

PLAN 4343/1C



- LEGEND**
- Mining Tenements
 - Clearing Instruments
 - Areas Approved to Clear
 - Panamonic 1.4m Orthomosaic - Landgate 2000

* Project Data. This data has not been quality assured. Please contact map author for details.



Geocentric Datum Australia 1994

Note: the data in this map have not been projected. This may result in geometric distortion or measurement inaccuracies.

PHIL GOREY Date 2/7/11

Officer with delegated authority under Section 20 of the Environmental Protection Act 1986
 Information derived from this map should be confirmed with the data custodian acknowledged by the agency acronym in the legend.



WA Crown Copyright 2002