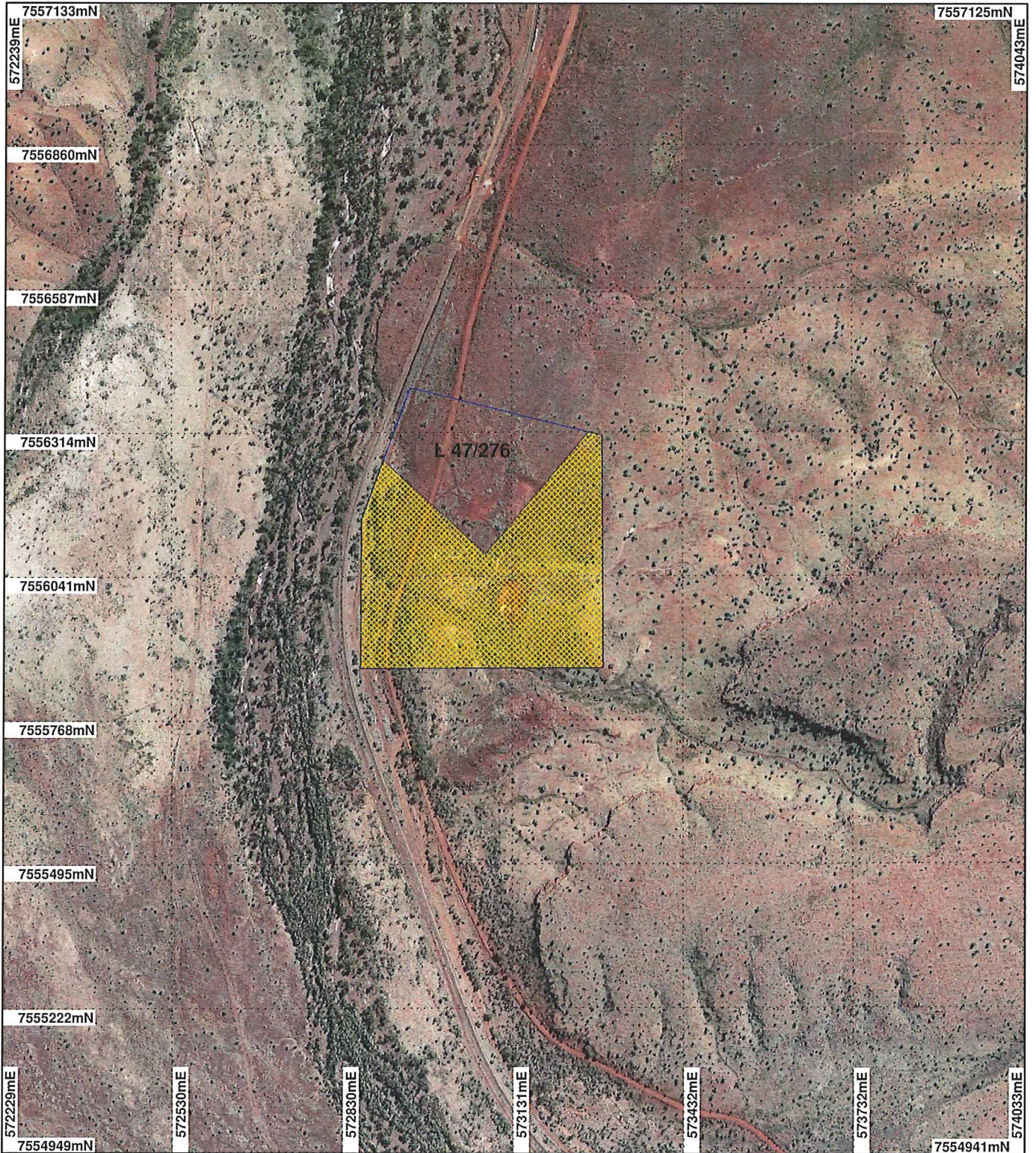


PLAN 4372/1 A



LEGEND

- Mining Tenements
 - Clearing Instruments
 - Areas Approved to Clear
- Mcrae 50cm Orthomosaic - Landgate 2004



Scale 1:10000

(Approximate when reproduced at A4)

Geocentric Datum Australia 1994

Note: the data in this map have not been projected. This may result in geometric distortion or measurement inaccuracies.

PHIL GOREY

Date 21/3/11

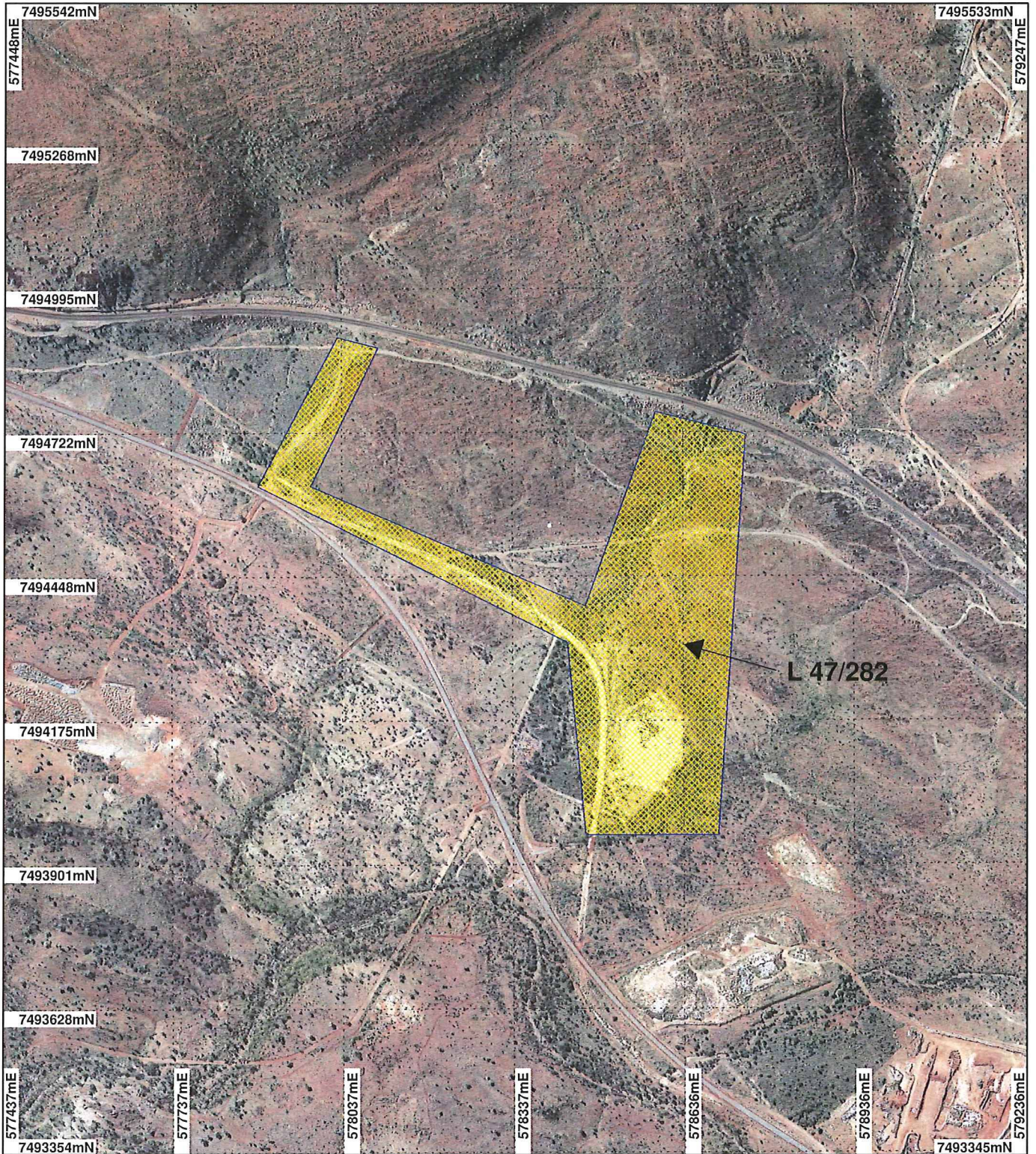
Officer with delegated authority under Section 20 of the Environmental Protection Act 1986

Information derived from this map should be confirmed with the data custodian acknowledged by the agency acronym in the legend.



WA Crown Copyright 2002

PLAN 4372/1 B



LEGEND

- | | |
|---|---|
| Clearing Instruments | <input type="checkbox"/> Mining Tenements |
| <input type="checkbox"/> Areas Approved to Clear | |
| Mount Lionel 50cm
Orthomosaic - Landgate
2004 | |



Scale 1:10000
(Approximate when reproduced at A4)

Geocentric Datum Australia 1994
Note: the data in this map have not been projected. This may result in geometric distortion or measurement inaccuracies.

PHIL GOREY
Date 21/7/11

Officer with delegated authority under Section 20 of the Environmental Protection Act 1986

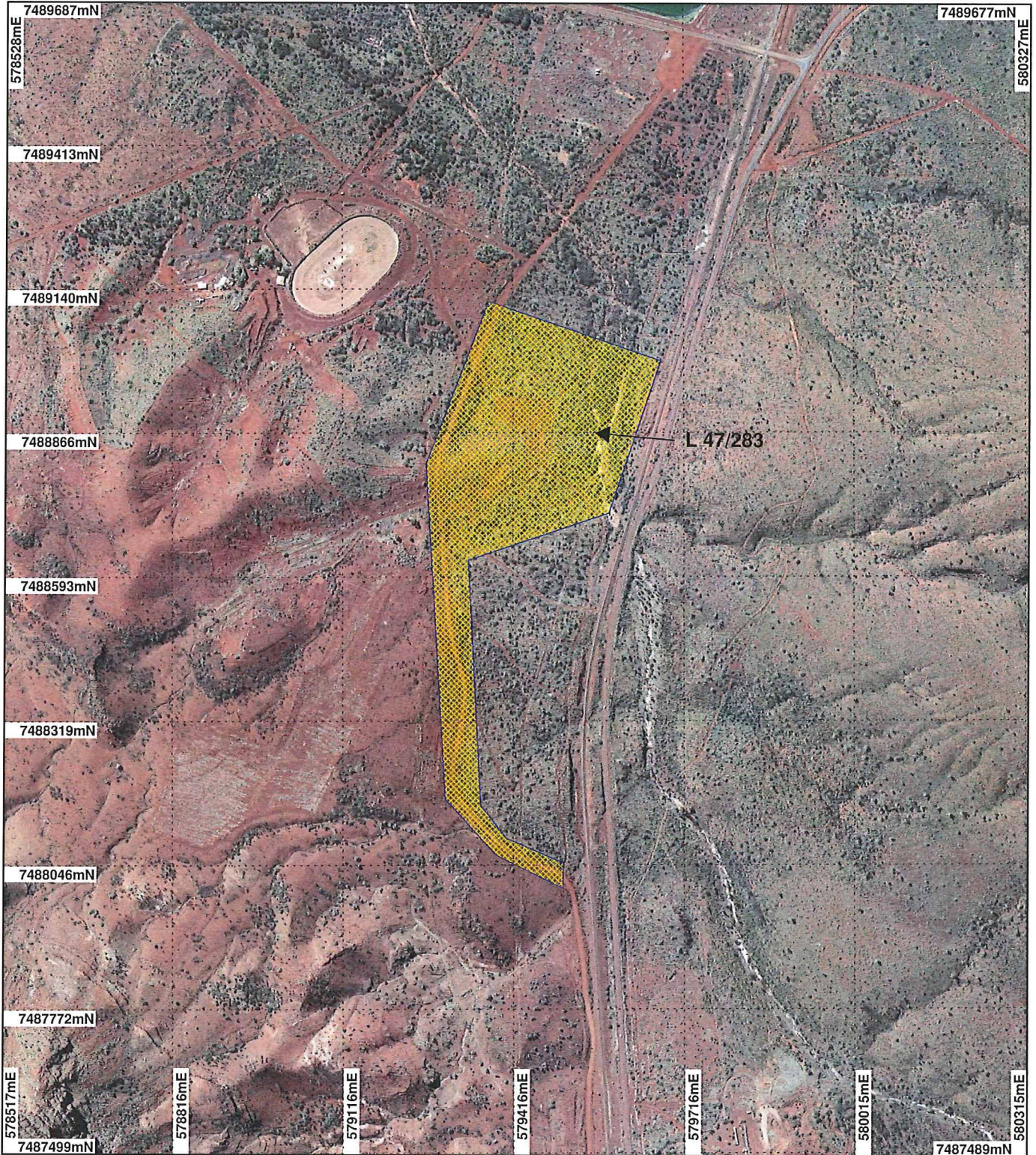
Information derived from this map should be confirmed with the data custodian acknowledged by the agency acronym in the legend.



WA Crown Copyright 2002

* Project Data. This data has not been quality assured. Please contact map author for details.

PLAN 4372/1 C



LEGEND

Clearing Instruments	<input type="checkbox"/> Mining Tenements
<input type="checkbox"/> Areas Approved to Clear	
Mount Lionel 50cm Orthomosaic - Landgate 2004	



0 -250 m

Scale 1:10000
(Approximate when reproduced at A4)

Geocentric Datum Australia 1994


Note: the data in this map have not been projected. This may result in geometric distortion or measurement inaccuracies.

..... Date 2/7/16

PHIL GOREY

Officer with delegated authority under Section 20 of the Environmental Protection Act 1986

Information derived from this map should be confirmed with the data custodian acknowledged by the agency acronym in the legend.



WA Crown Copyright 2002

* Project Data. This data has not been quality assured. Please contact map author for details.