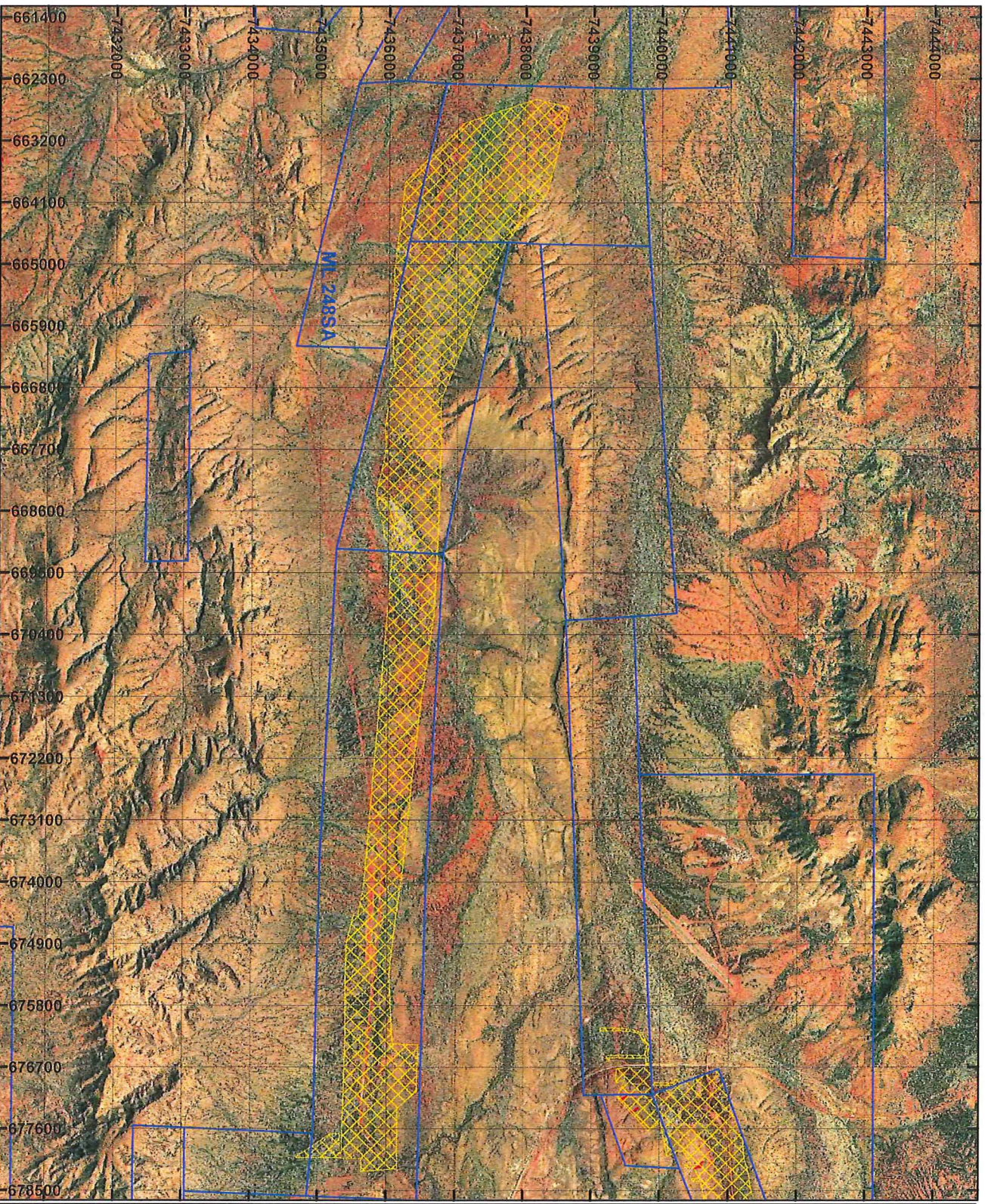
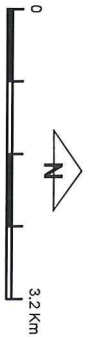


# PLAN 4394/3A



- LEGEND**
- Mining Tenements
  - Clearing Instruments
  - Areas Approved to Clear
  - Clearing Instruments\_1
  - Areas subject to Conditions
  - Clearing Instruments\_2



Geocentric Datum Australia 1994

*Note: the data in this map have not been projected. This may result in geometric distortion or measurement inaccuracies.*

\_\_\_\_\_ Date 21/11/15

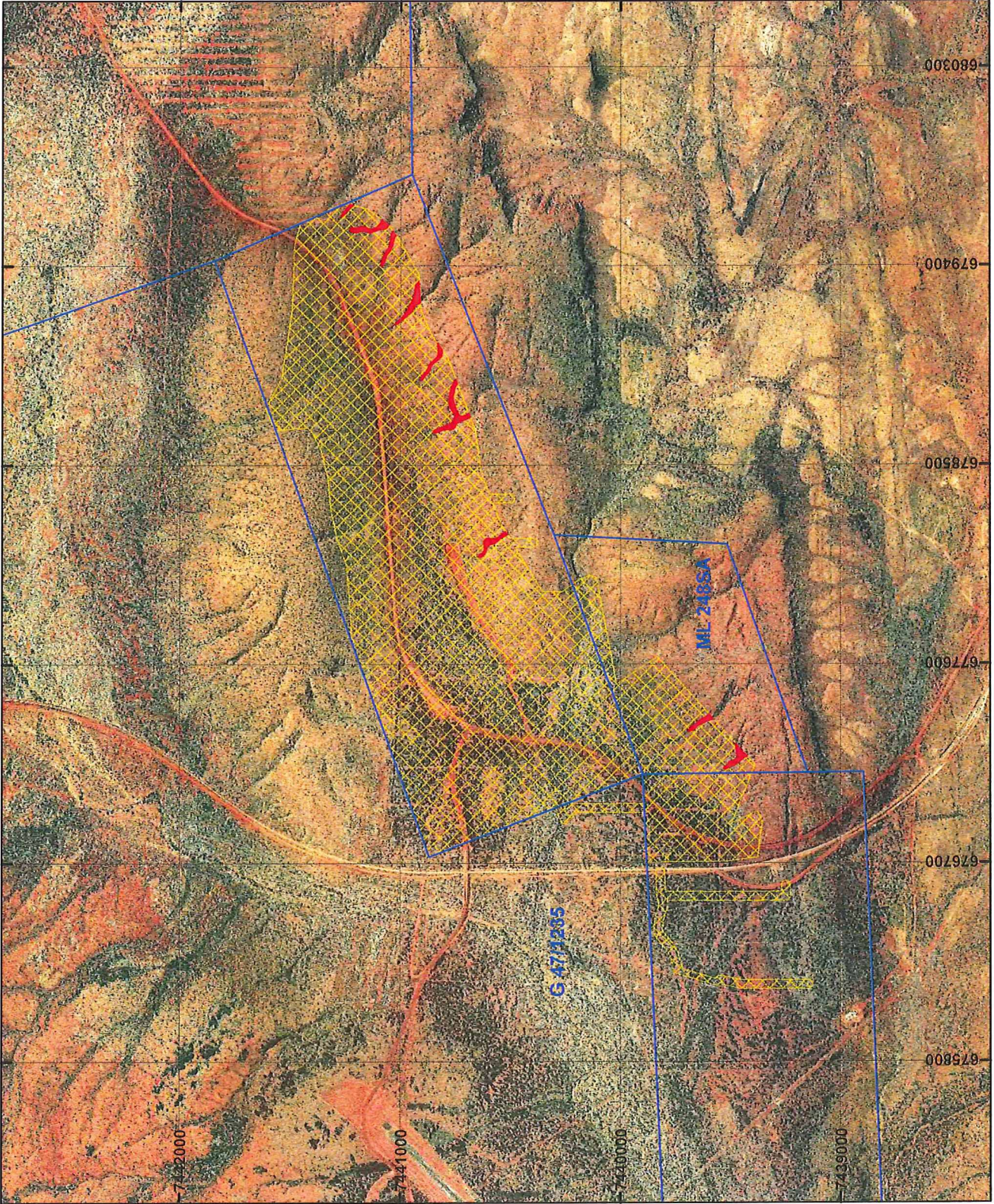
KIM ANDERSON

Officer with delegated authority under Section 20 of the Environmental Protection Act, 1986

Information derived from this map should be confirmed with the data custodian acknowledged by the agency acronym in the legend.

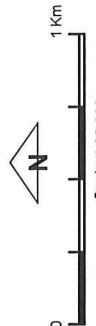


# PLAN 4394/3B



## LEGEND

- Mining Tenements
- Clearing Instruments
- Areas Approved to Clear
- Clearing Instruments\_1
- Areas Subject to Conditions
- Clearing Instruments\_2



Scale 1:25,000  
(Approximate when reproduced at A4)

Geocentric Datum Australia 1994

Note: the data in this map have not been projected. This may result in geometric distortion or measurement inaccuracies.

KIM ANDERSON ..... Date 01/12/2002

Officer with delegated authority under Section 20 of the Environmental Protection Act 1986

Information derived from this map should be confirmed with the data custodian acknowledged by the agency acronym in the legend.



WA Crown Copyright 2002