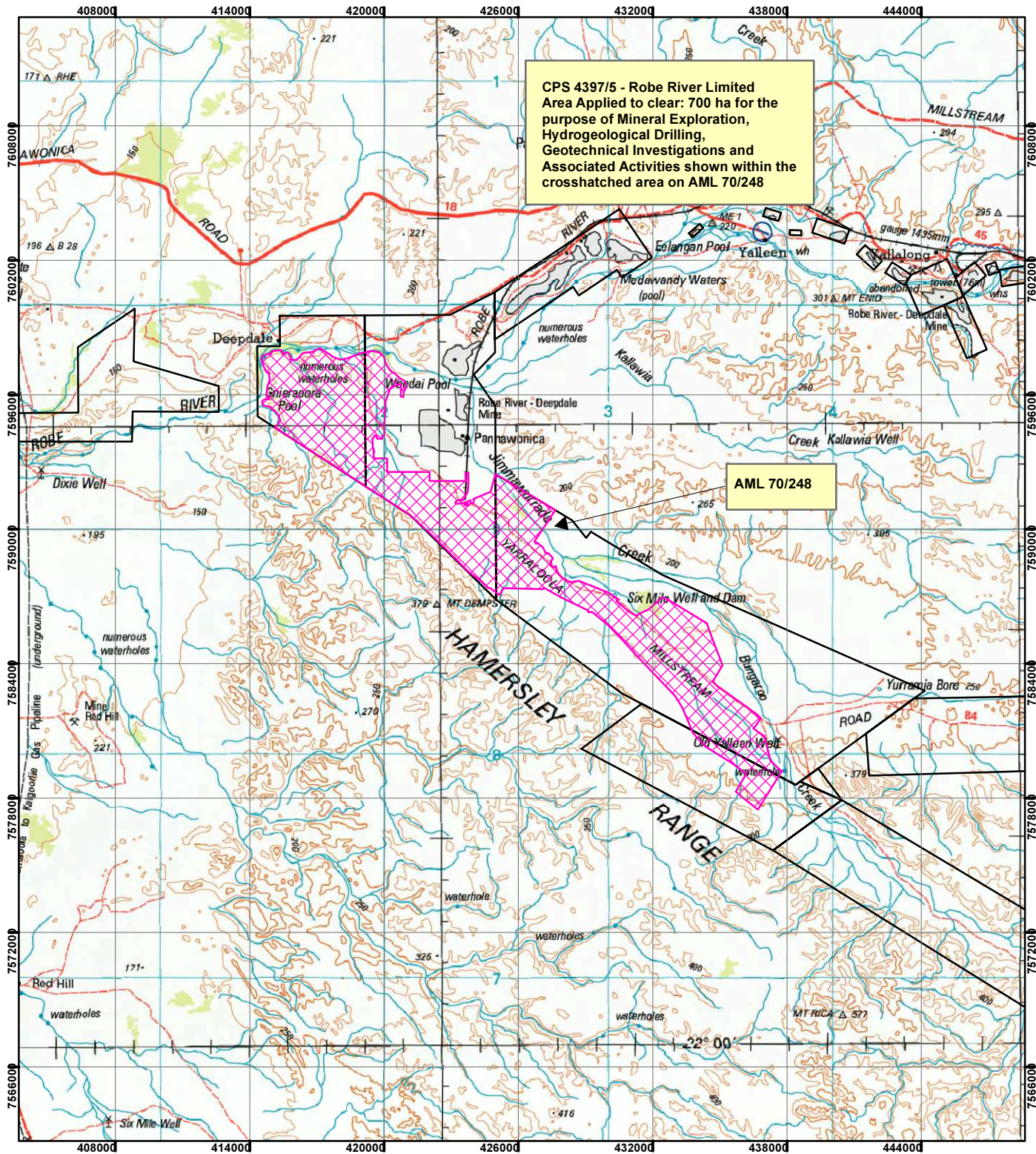



# CPS 4397/5 - Robe River Limited



CPS 4397/5 - Robe River Limited Area Applied to clear: 700 ha for the purpose of Mineral Exploration, Hydrogeological Drilling, Geotechnical Investigations and Associated Activities shown within the crosshatched area on AML 70/248

AML 70/248

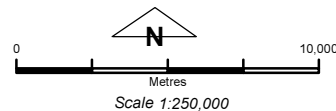
## Legend

 Clearing Instruments

## Mining Tenements

### FMT\_TENID

 ML 248SA



Geocentric Datum Australia 1994

Note: the data in this map have not been projected. This may result in geometric distortion or measurement inaccuracies.

Date .....

Officer with delegated authority under Section 20 of the Environmental Protection Act 1986

Information derived from this map should be confirmed with the data custodian acknowledged by the agency acronym in the legend.

